

The Small Cruise Ship Collection

www.small-cruise-ships.com

small-cruise-ships.com

info@small-cruise-ships.com

JAPANESE SUBTROPICAL ISLANDS WITH PONANT

PONANT is the first cruise company to take you to the heart of the sublime landscapes of the tropical islands in southern Japan during an expedition cruise. On this all-new 8-day itinerary aboard *Le Soléal*, from Osaka to Taiwan, you will discover the rich natural heritage of the Okinawa archipelago and the Ryukyu Islands. You will board your ship in Osaka, before setting sail south to reach this string of idyllic islands. *Le Soléal* will first set sail for the coral island of Kikaijima. You will be fascinated by this enchanting island with beautiful beaches and turquoise waters. Its lush seabed and biodiversity will allow you to enjoy a captivating exploration. Your next port of call will be Zamami, in the Kerama Islands. You will enjoy the unspoiled beauty of this pristine island, known the world over for the distinctive blue of the surrounding sea, called “Kerama blue”. The sea life in the area is also exceptionally rich and sea turtles can often be spotted swimming among the coral. *Le Soléal* will then sail towards the magnificent Iriomote-Ishigaki National Park. Here wild beaches mix with traditional villages and lush, protected and intact, tropical forest: jungle, mangroves, rivers, waterfalls. This unique biodiversity is made up of many endemic species. The landscapes on the remote island of Yonagunijima, the easternmost of the Ryukyu Islands, offer a striking contrast: cliffs, windswept meadows, wild horses. The beauty of its sea-beds and their mysterious rocky formations will delight the most experienced divers. You will end your cruise in Keelung, the port of the Taiwanese capital Taipei.



ITINERARY

Day 1 OSAKA

Like its big sister Tokyo, Osaka is the product of ancestral traditions and amazing technological innovations. And despite its size, its location on the Pacific Ocean give it a sense of serenity. The main historic landmark is the 16th-century Osaka Castle, which stands proud in the midst of majestic skyscrapers. The lively streets of Dotomburi and the bizarre Shinsekai district attract thousands of locals and visitors. A multitude of

The Small Cruise Ship Collection

www.small-cruise-ships.com

01432 507 280 (within UK)

info@small-cruise-ships.com | small-cruise-ships.com



The Small Cruise Ship Collection

www.small-cruise-ships.com

small-cruise-ships.com

info@small-cruise-ships.com

restaurants offer menus full of regional specialities: takoyaki, made with octopus, and other succulent dishes such as kushikatsu kebabs.

Day 2 AT SEA

During your day at sea, make the most of the many services and activities on board. Treat yourself to a moment of relaxation in the spa or stay in shape in the fitness centre. Depending on the season, let yourself be tempted by the swimming pool or a spot of sunbathing. This day without a port of call will also be an opportunity to enjoy the conferences or shows proposed on board, to do some shopping in the boutique or to meet the PONANT photographers in their dedicated space. As for lovers of the open sea, they will be able to visit the ship's upper deck to admire the spectacle of the waves and perhaps be lucky enough to observe marine species. A truly enchanted interlude, combining comfort, rest and entertainment.

Day 3 KIKAIJIMA

Located between continental Japan and the main island of Okinawa, Kikaijima is a small preserved coral island where nature unfurls in all its splendour. Amidst this abundance of plants, you will be enchanted by century-old trees, majestic banyan trees and sugar cane plantations, which produce a delicious brown sugar. This island, inhabited since the 10th century and located on the trade route between China and Japan, has a turbulent history. During your exploration, perhaps you will notice some ancient coral stone walls, like an echo of the ever-present ocean. Between the white sandy beaches and the limestone coastlines, you'll also be able to enjoy a snorkelling trip and delightful possibilities for swimming.

Day 4 ZAMAMI

Zamami is an island in the Kerama archipelago, 40 km (25 miles) west of Okinawa Island in the China Sea. Visitors to this 16 km² (6 mi²) quasi-uninhabited isle are enchanted by the many untouched natural treasures they find here. You will discover a tranquil island with lush vegetation, lined with stunning white-sand bays bathing in the glimmering 'Kerama blue' waters around the archipelago. Zamami is also renowned for the beauty of its coral reefs, where multicoloured fish engage in an endless mesmerising ballet. The observation deck on Mount Takatsuki reveals stunning views of the Kerama Islands, granted national park status in 2014. With subtle shifting shades of azure above and all around, this island truly is paradise.

Day 5 KUMEJIMA

Located 90 km (56 miles) to the south-west of Okinawa Honto, Kumejima is a multifaceted island home to natural treasures. Hatenuhama, a stunning 7 km-long (4.3 miles) fine-sand beach, promises wonderful carefree moments discovering the exceptional underwater worlds off the coast of Kumejima. Mifuga, a rock formation on the north coast of the island with a hole right through its middle, is a great example of the erosion along the coast. The eastern peninsula offers another geological feature, visible at low tide: 1,000 flat rocks each around one metre (3.2 feet) in diameter, formed by the contraction of lava from a nearby eruption a million years ago. They create a rocky plateau resembling a traditional Japanese tatami, hence the name Tatami-ishi.

Day 6 IRIOMOTE-ISHIGAKI NATIONAL PARK

Situated in the Yaeyama Islands, in the far south-west of Japan in the Okinawa Prefecture, Iriomote-Ishigaki National Park was established in 1972 and covers 125 km² (48 square miles).

The Small Cruise Ship Collection

www.small-cruise-ships.com

01432 507 280 (within UK)

info@small-cruise-ships.com | small-cruise-ships.com



The Small Cruise Ship Collection

www.small-cruise-ships.com

small-cruise-ships.com

info@small-cruise-ships.com

The park includes the islands of Iriomote and Ishigaki, the Sekisei lagoon which connects the two islands, as well as Hatoma and Hateruma, two islands in the lagoon. Iriomote is a heaven for explorers, with rivers running through it and 90% of the island covered in subtropical forest. You may get to glimpse an Iriomote cat or a crested serpent eagle, two endemic species. Visitors particularly appreciate Ishigaki for its stunning beaches and its exceptional seabeds, which form Japan's largest coral reef.

Day 7 YONAGUNIJIMA

The geographic situation of the island of Yonagunijima, the most remote and western in the Japanese archipelago of Okinawa, makes it a wild and preserved territory. Between cliffs plunging into the sea and white sandy beaches, lush meadows and palettes of blue, we can admire the last sunset every day here in the Land of the Rising Sun. The island is also renowned for the Yonaguni horses, a small breed standing only a metre high, which graze freely here. If you dive, Yonagunijima will delight you with its sea beds which are as exceptional as they are mysterious.

Day 8 KEELUNG (CHILUNG)

On the north-east tip of Taiwan, the harbour city of Keelung stands on one of the most beautiful coasts on the island. Nearby is the spectacular natural park of Yehliu, famed for its striking rock formations. It's easy to tour the city's historical sites on trails that cross the lush green hills surrounding the harbour from Chung Cheng Park to Fort Ershawan, you can enjoy superb views of Keelung and the coastline. But the main attraction is the Miaokou night market, where you can taste some typically Taiwanese culinary delights.

Please Note:

Itineraries are subject to change.

The Small Cruise Ship Collection

www.small-cruise-ships.com

01432 507 280 (within UK)

info@small-cruise-ships.com | small-cruise-ships.com



The Small Cruise Ship Collection

www.small-cruise-ships.com

small-cruise-ships.com

info@small-cruise-ships.com

YOUR SHIP: LE JACQUES CARTIER

YOUR SHIP: Le Jacques Cartier

VESSEL TYPE:

LENGTH:

PASSENGER CAPACITY:

BUILT/REFURBISHED:

Featuring innovative and environmentally-friendly equipment, elegantly designed staterooms, spacious suites with large windows, and lounge areas that open onto the outside, this new limited-capacity yacht boasting just 92 staterooms and suites will offer you a truly unique cruising experience. Le Jacques Cartier will embody refinement, intimacy and comfort. Aboard this ship that flies the French flag, you will experience the incomparable pleasure of an intimate cruise, with the possibility of exploring an ever-increasing range of destinations in an ethnic-chic ambiance with luxury service. Experience a luxurious setting where the accent is on authenticity and passion for travel. RESTAURANTS As it is an essential part of French culture, gastronomy will naturally have pride of place aboard this new ship. To the back of Deck 4, you will find a 260 m² panoramic restaurant which can accommodate all of our passengers in a single sitting. Designed differently to that on our other ships, this dining area, which opens onto the outside, will have a buffet of salads, desserts and cheeses at your disposal. Our discreet and attentive crew will provide table service for hot meals. In a relaxed atmosphere, an outdoor grill on Deck 3 will serve grilled meats with a variety of salads and desserts. PUBLIC AREAS Le

Jacques Cartier has many common areas that are designed and equipped to meet all of your needs while preserving the intimacy of each passenger. A 140 m² reception area includes: A reception/concierge desk, An excursions desk, The ship's administrative services, The sales office, manned by our Guest Relations Officer, Our 50 m² boutique which sells clothing, jewellery, beauty products, postcards and various accessories, Toilets accessible to passengers with reduced mobility. A new hydraulic platform with adjustable height provides: Easier boarding than on any other cruise ship, Easier Zodiac embarkation and disembarkation for expeditions, Easier access to the sea for swimming and practising various water sports such as kayaking or paddle-boarding. A pool deck offering: A pool with a panoramic view, equipped with a counter-current swimming system, A pleasant solarium, An outdoor bar and lounge with armchairs and sofas. A 200 m² main lounge which can accommodate all of our passengers to share convivial moments and to host activities organised during the day or evening. Lastly, a theatre that seats 188, equipped with: The latest sound and lighting technology, A LED wall as the stage backdrop, for the projection of high-resolution images and videos. Please click the following links to read more about Ponant and the other Ponant

The Small Cruise Ship Collection

www.small-cruise-ships.com

01432 507 280 (within UK)

info@small-cruise-ships.com | small-cruise-ships.com



The Small Cruise Ship Collection

www.small-cruise-ships.com

small-cruise-ships.com info@small-cruise-ships.com



cruise ships.

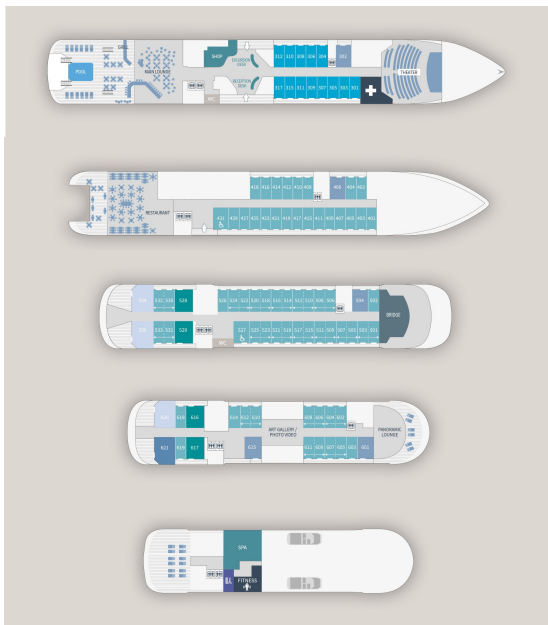
The Small Cruise Ship Collection

www.small-cruise-ships.com

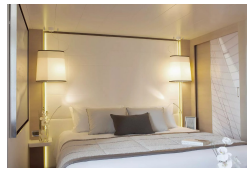
small-cruise-ships.com

info@small-cruise-ships.com

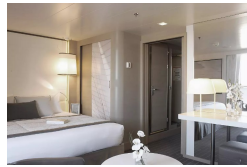
INSIDE YOUR SHIP



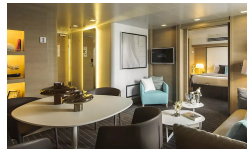
DeLuxe Stateroom



Deluxe Suite



Owner's Suite



Prestige Stateroom - Deck 4



Prestige Stateroom - Deck 5

Prestige Stateroom - Deck 6

Prestige Suite - Deck 5

Prestige Suite - Deck 6



The Small Cruise
Ship Collection

www.small-cruise-ships.com

small-cruise-ships.com

info@small-cruise-ships.com

PRICING

10-Oct-2024 to 17-Oct-2024

Owner's Suite	£15360 GBP pp
Prestige Suite - Deck 6	£13327 GBP pp
Prestige Suite - Deck 5	£12646 GBP pp
Superior Stateroom	£4825 GBP pp
Prestige Stateroom - Deck 5	£6182 GBP pp
DeLuxe Stateroom	£5257 GBP pp
Prestige Stateroom - Deck 4	£5876 GBP pp
Prestige Stateroom - Deck 6	£6546 GBP pp
Deluxe Suite	£9261 GBP pp

ADDITIONAL CHARGES: Port Charges. From 520 AUD pp