



The Small Cruise
Ship Collection

www.small-cruise-ships.com

small-cruise-ships.com

info@small-cruise-ships.com

CONGO RIVER SAFARI CRUISE OUESSO TO BRAZZAVILLE

After a flight over the Canopy in a private plane, we will embark on an extraordinary 12-night trip on the Sangha and Congo River, an incredible safari cruise. For nearly 1,000 km, we will sail through cathedral forests populated by thousands of gorillas, chimpanzees, forest elephants, bongos, buffaloes and more than 350 species of birds. Our descent will take us to the swampy forests at the mouth of the Sangha, then to the green hills of the Pool. It is on board motorboats that we will go up forgotten tributaries every day, in search of the wonders of nature kept out of sight. The people of the forest will be our guides. We will share their way of life and their unique knowledge passed down for centuries. In the evening, in the calm of our comfortable ship in the heart of the second largest lung on the planet, sipping a glass of wine, we will address the great questions of preservation, the history of the Congo, the history of the peoples.... We will disembark on the 13th day in Brazzaville, capital of the Republic of Congo, city of the Rumba, the sapeurs and the artistic school of Poto-Poto. The journey is over. What we saw, probably not many people had the chance to see.

The Small Cruise
Ship Collection

www.small-cruise-ships.com

01432 507 280 (within UK)

info@small-cruise-ships.com | small-cruise-ships.com

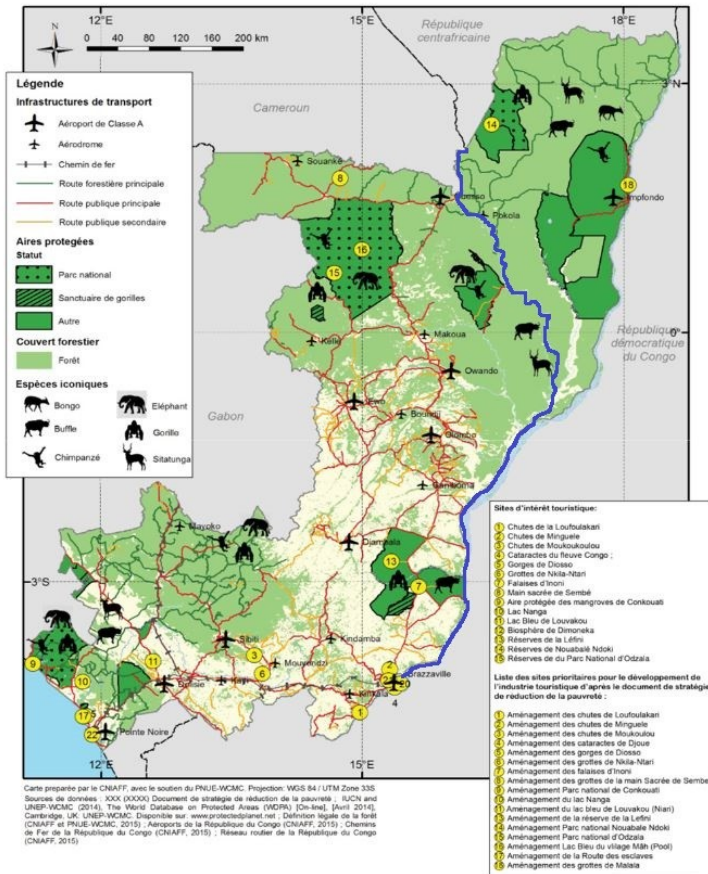


The Small Cruise Ship Collection

www.small-cruise-ships.com

small-cruise-ships.com

info@small-cruise-ships.com



1 hour and 45 minutes of flight in the morning in a 70-seater private plane to Ouesso. Through the portholes we can see the entire primary forest. This view of one of the largest primary forests in the world will remain forever in our memories. Boarding in the afternoon. Navigation on the Sangha.

Tri-national de la Sangha

Located in the north-west of the Congo Basin, at the junction of Cameroon, the Central African Republic and the Congo, the site encompasses three contiguous national parks totalling approximately 750,000 hectares. Much of the site is untouched by human activity and has a vast diversity of tropical rainforest ecosystems with rich flora and fauna, including Nile crocodiles and goliath tiger fish, a large predator. Forest clearings support herbaceous species, and Sangha is home to considerable populations of forest elephants, critically endangered western lowland gorillas, and endangered chimpanzees. To be as discreet as possible, our group will be divided into three subgroups.

Days 3

We head towards Bayanga. Along the way, we observe the many birds in the area and the fishing camps along the river. We arrive in the afternoon at our lodge to enjoy a pleasant sunset with a view of the Sangha.

Night in lodge.

ITINERARY

Day 1 Brazzaville

Arrive in the city of Brazzaville in Republic of Congo in the afternoon. Night in a 5 star hotel, dinner at the hotel.

Day 2 Fly to Ouesso - Embark



The Small Cruise Ship Collection

www.small-cruise-ships.com

small-cruise-ships.com

info@small-cruise-ships.com

Day 4

Early in the morning, we will visit the famous Dzangha Bai. Known as the Elephant Village, up to 150 elephants can be seen in a day. Perched high up in the trees, we will have the opportunity to see many animals, including buffaloes, bongos, situngas, duikers, etc. We will take the time to observe the animals from the platform before returning to our lodge.

Night in lodge.

Day 5

Departure in the morning for the seven bays called bays de Hokous. During these walks, we will have the chance to see a variety of animals, including elephants, gorillas, duikers, hyloids, and many birds. During our walk, our BaAka trackers track the groups of Agile Mangabeys followed by the scientists. These silver-gray monkeys show remarkable grace when navigating the forest canopy with ease, using their long limbs and prehensile tails. Agile Mangabeys are very social creatures, often engaging in games such as chasing each other, jumping from tree to tree, and simulating fights. They communicate through a diverse range of vocalizations, including chirps, squeals, and growls, which play a crucial role in maintaining social connections and coordinating group activities.

Night in lodge.

Day 6

We return to Princess Ngalessa by motorboat. Depending on the weather conditions and the weather, we will visit the war memorial in Mbiru where the French and Germans fought for the colonization of the Congo during the Franco-Prussian War. We will then drive through the intact primary forest with its cathedral canopy, discover a variety of ecosystems and regenerated forests.

Day 7

In the early hours of the day, sail on the dark waters of the Ndoki and watch the majestic birds. Later, we will meet the indigenous peoples (Pygmies). They are among the last hunter-gatherer groups in the world. In the forest, in small groups, we share their daily lives: picking fruit and plants, harvesting medicinal plants, building a hut, making mats or baskets, and learning to sing polyphonically. We discover their thousand-year-old way of life and their incredible symbiosis with the forest. Our tour ends with a Ndzengi ceremony, where the Pygmies sing and dance.

Day 8



The Small Cruise Ship Collection

www.small-cruise-ships.com

small-cruise-ships.com

info@small-cruise-ships.com

Sail to Pikounda. The village was once a trading post that prospered thanks to the activities of the Truchot brothers. We explore the different neighborhoods, the old colonial buildings, and the process of processing cocoa, from pod to cocoa butter, as well as the corn wine that is highly prized in the region. In the evening, at the edge of the woods, we meet the Chief of the Lands, the traditional leader of the Bongili people, who shares stories about the land with us.

Day 9

In the early morning, we go up the Mangui River by motorboat. The Mangui River forms the northern border of Ntokou Pikounda National Park, made famous in 2008 when WWF rediscovered a small red monkey called the Bouvier's red colobus, which was considered extinct. Although difficult to observe, other small monkeys can be spotted, such as the talapoin. Stories are also told of a distant sighting of a dinosaur: the Mokele Mbembe. In the afternoon, we stop at a fishing camp. Here we learn about different fishing techniques, the fish from the river and the process of smoking the fish. During the afternoon, we cross the equator. We find ourselves in the heart of the vast rainforest. It was the baptism of the Line!

Day 10

We leave the rainforest behind. In the morning, we reach the Likounda-Aux-Herbes estuary on motorboats to observe some of the most iconic birds of the Congo Basin. The Congo Basin is home to more than 350 species of birds, including the

black-chinned weaver and the Congo wheatear. We also find large, enigmatic species such as the chestnut-bellied bustard and the Senegal bustard, as well as species typical of tropical forests such as the grey parrot and various species of hornbills, turacos and kingfishers. Further on, we observe hippopotamuses.

Day 11

The Congo River widens considerably (more than 10 km) and a mishmash of islands is formed. Fishing villages are set up there during the dry season. We arrive at the tributary of 5 rivers, in a vast marshy area. Dozens of species of birds are visible. Further on, we observe hippopotamuses. We reach the fishing village of Mossaka, known throughout the country for its smoked fish. We discover vestiges of the colonial era.

Day 12

In the morning, we reach the estuary of the Lefini which borders the kingdom. Hippos are lounging. We observe. In the afternoon, we arrive at the village of Ngabe, one of the ancient capitals of the Teke kingdom. We go up the village to visit the current queen Ngalifourou. As the guardian of the "Nkwembali", the spiritual god of the Bateke, she is the person authorized to transmit power to the new king, the Makoko. He is a very influential person in the Teke kingdom, one of the powerful kingdoms of the country. We are witnessing a kebe kebe ritual.

Day 13

The Small Cruise Ship Collection

www.small-cruise-ships.com

01432 507 280 (within UK)

info@small-cruise-ships.com | small-cruise-ships.com



The Small Cruise Ship Collection

www.small-cruise-ships.com

small-cruise-ships.com

info@small-cruise-ships.com

Arrival in Brazzaville. Disembarkation. We go on a tour of the city. Meeting with the Sape - Society of Ambients and Elegant People.

* Lunch not included



01432 507 280 (within UK)

info@small-cruise-ships.com | small-cruise-ships.com



The Small Cruise Ship Collection

www.small-cruise-ships.com

small-cruise-ships.com

info@small-cruise-ships.com

YOUR SHIP: PRINCESS NGALESSA

YOUR SHIP: Princess Ngalessa

VESSEL TYPE:

LENGTH:

PASSENGER CAPACITY:

BUILT/REFURBISHED:

The ship was built in a Belgian run shipyard in Kinshasa in 2017. It takes the form of the passenger ships that have for decades transported passengers on the Congo River and its tributaries between the different capitals of Central Africa. With a robust steel construction, she is powered by two new-generation 380 HP Caterpillar engines, thus reducing noise pollution and fuel consumption. Its draft of 90 centimeters allows it to navigate easily on shallow rivers. In 2022/2023, she was refitted to launch the first 4 safari cruises in the heart of one of the most mysterious forests in the world, the Congo Basin forest. Its renovation into a comfortable 4-star Boutique Hotel Ship launches a new era for the development of sustainable tourism in the Republic of Congo (Congo Brazzaville). In June 2023 she began the first cruises on the Congo and Sangha rivers, thus reviving the long tradition of river navigation in the Congo. ON BOARD LIVING AND SOCIAL AREAS :600 m² of common areas Dining room Indoor bar and lounge Outdoor lounge Outdoor jacuzzi Massage Room Observation Deck WORLD CLASS DINING PROGRAM A culinary experience nourished by African and European influences A menu specially prepared by a French Chef rewarded for his work with a Michelin

star in 2021 Local products and fine wine. LAUNCH BOATS FOR SHORE EXCURSIONS Two auxiliary aluminum launch boats equipped with four-stroke low emission engines. Each boat has a capacity of 15 passengers. Kayaks for two people Accommodation Passengers are accommodated in 14 Design cabins across three decks. Owner's Suite 35 m². Observation deck. Private balcony (9m²) : Three windows, armchair, writing desk and chair, two bedside tables, sofa, and a closet. Bathroom. Air-conditioning. 1 cabin with two single beds that can convert to a queen. 1 cabin with one queen bed. (401, 402) Forward Master Suite 23 m². Second Deck Forward. Public balcony : Four windows, armchair, writing desk and chair, two bedside tables, and a closet. Bathroom. Air-conditioning. 2 cabins with queen beds. (201, 202) Master Suite 27 m². Second Deck. Public balcony : Three windows, armchair, writing desk and chair, two bedside tables, sofa, and a closet. Bathroom. Air-conditioning. 1 cabin with two single beds that can convert to a queen. 1 cabin with one queen bed. (203, 204) Deluxe Suite 18 m². Second Deck. Public balcony : Two windows, armchair, writing desk and chair, two bedside tables, and a closet. Bathroom. Air-conditioning. 2 cabins with two single beds that can convert to a queen. 4 cabins with queen beds. (205, 206, 207, 208, 209, 210) Classic Cabin 12 m². First Deck. Public balcony : One window, armchair and a closet. Bathroom. Air-conditioning. 2 cabins with two single beds

The Small Cruise Ship Collection
www.small-cruise-ships.com

01432 507 280 (within UK)

info@small-cruise-ships.com | small-cruise-ships.com



(101, 102)



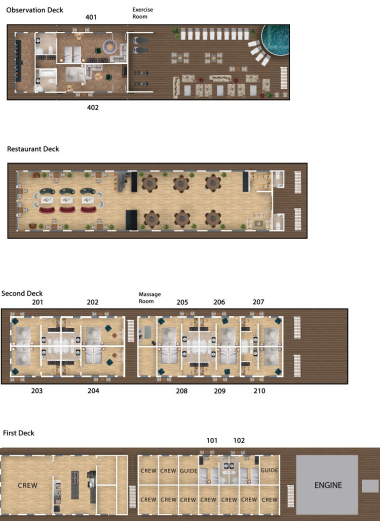
The Small Cruise Ship Collection

www.small-cruise-ships.com

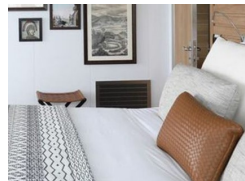
small-cruise-ships.com

info@small-cruise-ships.com

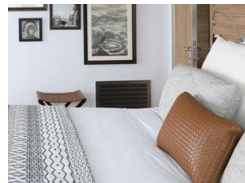
INSIDE YOUR SHIP



Deluxe Suite

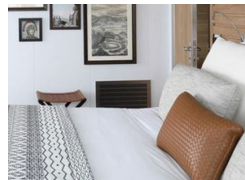
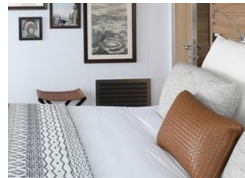


Forward Master Suite



Forward Superior Suite

Master Suite



The Small Cruise Ship Collection

www.small-cruise-ships.com

01432 507 280 (within UK)

info@small-cruise-ships.com | small-cruise-ships.com



The Small Cruise Ship Collection

www.small-cruise-ships.com

small-cruise-ships.com

info@small-cruise-ships.com

PRICING

24-Jul-2025 to 05-Aug-2025

Deluxe Suite	£5810 GBP pp
Forward Master Suite	£6640 GBP pp
Master Suite	£6640 GBP pp
Superior Suite	£7055 GBP pp
Forward Superior Suite	£7470 GBP pp
Owner's Suite	£7968 GBP pp

ADDITIONAL CHARGES:

Letter of invitation (if required) 60
EUR pp