

The Small Cruise Ship Collection

www.small-cruise-ships.com

small-cruise-ships.com

info@small-cruise-ships.com

JOURNEY TO JAPAN

Onboard Coral Adventurer, depart from Guam and venture to the Mariana Islands to uncover pivotal World War II history at Tinian and Iwo Jima. Explore the pristine marine environments of Rota, Pagan and Maug island. As we continue to the Japanese Ogasawara and Izu archipelagos, be among the first visitors from abroad to explore remote Japanese islands including Chichijima, Hahajima and Mukojima. Step ashore to witness the lifestyle of traditional Japanese fishing villages, encounter native wildlife and take to the water to discover untouched marine ecosystems. Be immersed in local culture by witnessing the traditional kashitate dance and hachijo taiko drum performance at Hachijojima. Explore Shimizu's bustling seafood market and take to the hiking trail to enjoy rustic ropeways and unparalleled views of Mt. Fuji's iconic silhouette. Join us on an adventure combining history, culture and striking biodiversity as we venture to the Japan that lies off the beaten track.



ITINERARY

DAY 1: DEPART GUAM

Board Coral Adventurer at Guam at 4:00pm for a 7:00pm departure. Settle into your cabin and relax as we set sail across the Pacific Ocean. This evening, join the Captain's welcome drinks and meet your crew and fellow guests as the sun sets.

ROTA

As the southernmost island of the United States Commonwealth of the Northern Mariana Islands (CNMI) with picture-perfect palm-fringed beaches and aquamarine waters that invite snorkelling and kayaking, Rota is known as 'friendly island' with its relaxed ambience. The island is home to diverse flora and fauna including the endemic and endangered rota white-eye bird, Mariana fruit bat and Mariana cow. Learn about WWII history at the Old Japanese Cannon which overlooks Mount

The Small Cruise Ship Collection

www.small-cruise-ships.com

01432 507 280 (within UK)

info@small-cruise-ships.com | small-cruise-ships.com



The Small Cruise Ship Collection

www.small-cruise-ships.com

small-cruise-ships.com

info@small-cruise-ships.com

Tapingot, known as 'wedding cake mountain' for its multi-layered topography. Snorkel or scuba to the undersea walls, shipwrecks and vivid coral reefs that surround the islands.

TINIAN

See the megalithic House of Taga stone pillars on Tinian Island. Visit the historic WWII site where the Boeing B-29 Superfortress bomber Enola Gay was loaded with the atomic bomb bound for Hiroshima. Stroll along the harbour at San Jose, the island's largest village and swim in the clear waters of Taga Beach.

PAGAN ISLAND

Pagan Island is an active volcanic island located some 320km north of Saipan. Here we will step ashore to visit the small local community and explore the island's lava areas. We will learn of the island's World War II history and visit the Japanese Zero wreck and other artifacts.

MAUG ISLAND

Maug Island is a remote volcanic caldera and is flagged as an Important Bird Area for its populations of Micronesian megapodes, red-tailed tropicbirds, brown noddies, Micronesian myzomelas and Micronesian starlings. Enjoy excellent birding opportunities and snorkel or dive to explore the island's pristine coral reef ecosystem.

IWO JIMA

Our introduction to Japan is the volcanic island of Iwo Jima where the WWII Battle of Iwo Jima took place along with the site of Associated Press photographer Joe Rosenthal's famous photo Raising the Flag which was photographed on Mt. Suribachi. The famous photograph won the 1945 Pulitzer Prize - the only time an image has won the prize the year it was captured.

CHICHIJIMA

The largest of the Ogasawara Islands, mountainous Chichijima with its subtropical forests is rimmed by steep rocky cliffs that bound pristine white-sand beaches. Populations of humpback and sperm whales frequent the ocean during annual migrations, along with year-round pods of bottlenose and spinner dolphins. Swimmers, snorkelers and kayakers may have the opportunity to see these graceful creatures up close. Nesting turtles and large populations of sea birds may be seen at Minamijima Island, a small uninhabited island with an eroded tunnel carved into a cliff connecting a scenic bay to the ocean beyond the island.

HAHAJIMA

Hahajima is one of only two inhabited islands (Chichijima being the other) in the Ogasawara Island Group. Like Chichijima Island, Hahajima is home to unique flora and fauna. Walking trails crisscross the long, narrow island offer the opportunity to potentially see bird species such as the protected bonin honeyeater and boobies along with endemic plants such as sekimon trees. Limestone karsts and caves with exposed tree

The Small Cruise Ship Collection

www.small-cruise-ships.com

01432 507 280 (within UK)

info@small-cruise-ships.com | small-cruise-ships.com



The Small Cruise Ship Collection

www.small-cruise-ships.com

small-cruise-ships.com

info@small-cruise-ships.com

roots overhead can be walked through, while Ross Museum and the history Okimura Cemetery offer insight into the lives of islanders who once lived here.

MUKOJIMA AND TORIJIMA

The uninhabited outcrop of Mukojima and nearby Torijima is home to an important nesting site for a colony of black-footed albatrosses and Laysan albatrosses. Cruise past the active volcano of Torijima Island which houses a weather station, volcanic research station and is also a bird sanctuary. Albatrosses, Tristrams storm petrels, common kestrels and blue rock thrush may be sighted, along with whales and dolphins.

HACHIOJIMA

On Hachiojima Island see the landscape changed by volcanic eruptions and enjoy hot springs and waterfalls within moss-draped forests with blooming hydrangeas, aloe and freesia. Hikes with unbeatable views are on offer here where you can observe the unique nature and grazing cows. At the Hattori Residence be immersed in local culture with a Kashitate dance and Hachijo Taiko drum performance, learn about kimono traditions and wander the ancient stone-walled laneways of this historical site.

MIKURAJIMA

The coast of Miyakejima is largely formed by lava cooling which has created interesting geo-spots over time. Megane Rock

(spectacle rock) is one such result, formed by two enormous arches lined together which have eroded over time to create a formation resembling a pair of spectacles. This unique volcanic landscape is home to flora and fauna that thrive in this challenging terrain. The island is famous for its bird watching opportunities with sightings of the Izu Island thrush - a designated natural treasure. Walk along the volcanic trails and explore the landscape while encountering wildlife at this extraordinary destination.

SHIMIZU

Shimizu, translating to 'pure water' in Japanese is one of Japan's most scenic ports with unparalleled views of Mt. Fuji. With a mild climate, the area is home to rich tea plantations located on the Nihondaira Plateau. Visit the famous tea plantations, explore the historic township with a bustling seafood market and museum, discover the photogenic miho-no-matsubara pine grove and take to a hiking trail to enjoy rustic ropeways.

DAY 15: ARRIVE TOKYO

Our voyage ends in the Japanese capital of Tokyo. Disembark Coral Adventurer at 8:30 am and bid farewell to new-found friends, the Master and crew.

Please Note:

This itinerary is an indication of the destinations we visit and activities on offer. Throughout the expedition we may make

The Small Cruise Ship Collection
www.small-cruise-ships.com

01432 507 280 (within UK)

info@small-cruise-ships.com | small-cruise-ships.com



 The Small Cruise
Ship Collection
www.small-cruise-ships.com

small-cruise-ships.com

info@small-cruise-ships.com

changes to the itinerary as necessary to maximise your expeditionary experience. Allowances may be made for seasonal variations, weather, tidal conditions, and any other event that may affect the operation of the vessel. Coral Expeditions suggests that you do not arrive on the day of embarkation or depart on the day of disembarkation due to any changes that may occur in scheduling.



The Small Cruise
Ship Collection

www.small-cruise-ships.com

small-cruise-ships.com

info@small-cruise-ships.com

YOUR SHIP: CORAL ADVENTURER

YOUR SHIP: Coral Adventurer

VESSEL TYPE:

LENGTH:

PASSENGER CAPACITY:

BUILT/REFURBISHED:

Launched in 2018 with her maiden voyage in 2019, Coral Adventurer has been designed and built to take you closer to unspoilt vistas in comfort, style and safety. A culmination of two years of design and three decades of passion for expedition cruising. BIGGER IS NOT BETTER At a time when cruise ships get larger and glitzier, we remain stubbornly compact and intimate. Our ships are designed to take you to unspoilt destinations not accessible to large ships. We want you to have the luxury of space, dine with whom you please, or find your quiet corner on deck. So Coral Adventurer has just 60 spacious cabins. This preserves the intimate atmosphere we are known for without sacrificing the stability and comfort of a true ocean going vessel. BUILT FOR DISCOVERY The Coral Adventurer features the trademark dual 'Xplorer' tenders cradled on a hydraulic platform slung off the back of the ship, enabling our guests to go ashore in comfort and ease. The shallow draft of the ship enables us to go closer to shore than larger ships. Together with a renowned expedition team, this new ship will offer the most advanced expedition capabilities of any small ship afloat. BUILT FOR COMFORT With active stabilisers dampening sea motion, mostly balcony cabins, and interiors designed with the colours and

textures of tropical Queensland, the Coral Adventurer is a comfortable ship. She features promenade decks, generous communal areas that accommodate all guests, a passenger elevator, and an open kitchen where you can observe our chefs whip up small batch cuisine from locally sourced ingredients. BUILT FOR PERSONAL SERVICE The Coral Adventurer will continue a proud tradition of Australian flagged vessels with friendly and professional Australian crew. The onboard atmosphere remains refreshingly informal and intimate. Take your seat at our bridge lounge, chat with the captain at your leisure or accompany our chefs on a market tour. Food and wine features Single seating dining area with communal 'wine table' finished with Australian stone; serving buffet breakfast and lunch, and multi-course table d'hote dinners Showcase galley visible to guests for fresh small-batch cuisine featuring Australian produce Multiple indoor and outdoor bars, including the Explorer bar on the sundeck for sunset drinks with 180 degree views Curated wine cellar featuring modestly priced boutique wines for daily drinking and exceptional vintage Australian reds. Guest comfort All outside guest cabins with en-suite bathrooms; majority have private balcony Active stabilisers to dampen sea motion Gym equipped with elliptical trainers and treadmills Passenger elevator Wi-Fi available in all

The Small Cruise
Ship Collection

www.small-cruise-ships.com

01432 507 280 (within UK)

info@small-cruise-ships.com | small-cruise-ships.com



The Small Cruise Ship Collection
www.small-cruise-ships.com

small-cruise-ships.com

info@small-cruise-ships.com



guest areas

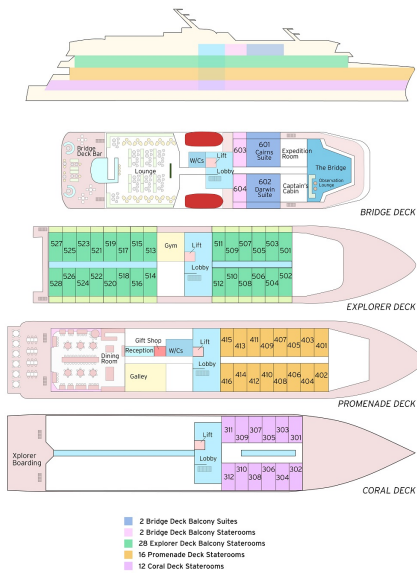
The Small Cruise Ship Collection

www.small-cruise-ships.com

small-cruise-ships.com

info@small-cruise-ships.com

INSIDE YOUR SHIP



Bridge Deck Balcony Suite ■

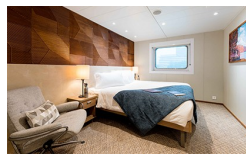
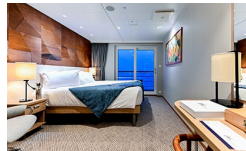


Coral Deck ■ Stateroom



Explorer Deck Balcony Stateroom

Promenade Deck Stateroom



The Small Cruise Ship Collection

www.small-cruise-ships.com

01432 507 280 (within UK)

info@small-cruise-ships.com | small-cruise-ships.com



The Small Cruise
Ship Collection

www.small-cruise-ships.com

small-cruise-ships.com

info@small-cruise-ships.com

PRICING

06-Sep-2024 to 20-Sep-2024

Coral Deck Stateroom	£6546 GBP pp
Explorer Deck Balcony Stateroom	£10374 GBP pp
Promenade Deck Stateroom	£7779 GBP pp
Bridge Deck Balcony Suite	£14554 GBP pp