

The Small Cruise Ship Collection

www.small-cruise-ships.com

small-cruise-ships.com

info@small-cruise-ships.com

LONGING FOR LA DOLCE VITA

Feel the pulse of history, tradition, and natural beauty as you sail through these stunning Mediterranean destinations. Each day promises new adventures, breathtaking views, and unforgettable memories.



ITINERARY

Day 1 - Valetta, Malta

Departure 7:00 pm

This strategically important location has always attracted foreign conquerors. More than 7,000 years ago, a civilisation existed here, leaving behind enormous temple complexes. Just like proud Valletta, these are now UNESCO World Heritage Sites.

The Small Cruise Ship Collection

www.small-cruise-ships.com

01432 507 280 (within UK)

info@small-cruise-ships.com | small-cruise-ships.com



The Small Cruise Ship Collection

www.small-cruise-ships.com

small-cruise-ships.com

info@small-cruise-ships.com

Jean Parisot de la Valette, Grand Master of the Order of St John, founded a modern fortified city on a rock in 1566, between the two splendid natural ports of Marsamxett and Grand harbor. Long rows of facades made from golden-yellow blocks of chalk stretch along the straight streets. Splendid Renaissance and Baroque buildings are evidence of riches and power, such as the Palace of the Grand Master and the impressive St John's Co-Cathedral.

Day 2 - Day under full sails

Climbing the rigging, untying ropes, setting sails - today is all about sailing. Time to lean back and relax in the deck chair and watch the passionate crew hoisting the sails by hand.

Day 3 - Trapani, Sicily

Arrival 8:00 am, Departure 7:00 pm

The old town and port of Trapani lies on a picturesque crescent-shaped headland at the foot of Monte Erice. You will discover many little treasures browsing through the beautiful town center. For the last 1,000 years, fine black and red coral jewellery has been made here. The mountain town of Erice is a real architectural gem. Not far from Trapani, this idyllic little town is tucked away in a picturesque hilltop setting overlooking the countryside and the sea. Protected defiantly by a wall, the town retains its splendid medieval atmosphere.

Day 4 - Palermo, Sicily

Arrival 8:00 am, Departure 11:00 pm

The character of Palermo, Sicily's vibrant capital, was mainly forged by the Arabs, Swabian dynasty and Normans. Noble palaces line the magnificent streets, cheerful-looking Art Nouveau houses stand next to Baroque buildings and a little further on you are faced with pure Gothic facades. The medieval quarter towers above the huge Palazzo Reale with its "Capella Palatina", a masterpiece in the Arab-Byzantine-Norman style. The small mountain town of Monreale gives you a breathtaking view over the town and the bay, as well as the 12th century cathedral whose interior combines Romanesque, Byzantine and Arab art with rich gold mosaics.

Day 5 - Lipari, Aeolian Islands

Arrival 1:30 pm, Departure 6:00 pm

Lipari is a tranquil little spot and the largest of the Aeolian Islands, with a cultural heritage stretching back over 6,000 years. Right from first glance you can see its volcanic heritage, with some of the rock formations resembling sculptures, and the entire group of islands is a UNESCO World Heritage Site. The Aeolian Museum is set on the castle hill and holds an impressive collection of prehistoric and ancient artefacts from this volcanic group of islands. You will find the southern Italian way of life in this little port infectious.

Day 6 - Taormina (Naxos), Sicily

The Small Cruise Ship Collection
www.small-cruise-ships.com

01432 507 280 (within UK)

info@small-cruise-ships.com | small-cruise-ships.com



The Small Cruise Ship Collection

www.small-cruise-ships.com

small-cruise-ships.com

info@small-cruise-ships.com

Arrival 7:00 am, Departure 2:00 pm

Taormina is perched on a rock with a majestic view over the sea. In the 19th century, this small town had already developed into a dream destination for well-heeled travellers and artists. The town's fascination lies in its elegance, the many ancient buildings, the stunningly beautiful coastline, the mild climate, and the view over the silhouette of Etna. Europe's largest volcano is over 9,843 feet high, has four summit craters and around 400 subsidiary craters, and is covered with snow almost all year round. In ancient times it was considered the seat of the gods, but nowadays large sections of it are a nature reserve.

Day 7 - Amalfi, Italy

Arrival 04:00 pm, Departure 11:00 pm

The beautifully curving Amalfi Coast, which meanders along the starkly protruding Sorrento peninsula, has been listed as a UNESCO world heritage site. In the pretty little town of Amalfi, whose history as an influential maritime republic is still clear to see, a dense labyrinth of pastel-colored houses clings to the rocky coastline. Boasting three naves, the beautiful 10th century cathedral with an enchanting cloister, colorful marble façade, Arabic-Norman campanile and magnificent steps leading to the lively Piazza Duomo is the heart of this small coastal town.

Day 8 - Naples, Italy

Arrival 8:00 am

Naples rises from the sea around a huge bay and extends up into the hills like an amphitheatre. From the Castello Sant' Elmo on the Vomero you can enjoy a fantastic view over the sea of houses, the port and the Gulf. The pretty center of this chaotic Campanian city is the old town, designated a UNESCO World Heritage Site, with its huge fortresses, dignified churches and monasteries, splendid squares and palaces, and maze of winding streets.

The Small Cruise Ship Collection

www.small-cruise-ships.com

01432 507 280 (within UK)

info@small-cruise-ships.com | small-cruise-ships.com

The Small Cruise Ship Collection

www.small-cruise-ships.com

small-cruise-ships.com

info@small-cruise-ships.com

YOUR SHIP: SEA CLOUD SPIRIT

YOUR SHIP:

Sea Cloud Spirit

VESSEL TYPE:

LENGTH:

PASSENGER CAPACITY:

BUILT/REFURBISHED:

Building a three-mast full-rigged ship with traditional rigging in the 21st century may seem a little unusual. For SEA CLOUD CRUISES it is a commitment to true passion for sailing. With her clear, classic line she follows the example of her elegant windjammer sisters, but goes completely new ways. An entire deck with balcony cabins, an exclusive wellness and SPA area, a fitness room with sea view, a bistro on deck as an evening alternative to "fine dining" in the restaurant - the youngest member of the SEA CLOUD family offers plenty of room for individuality in addition to genuine windjammer romance. The SEA CLOUD SPIRIT combines traditional windjammer experience with 21st century comfort with up to 136 passengers. Cabins Even more comfort: of the 69 cabins from the owner suite to the superior outside cabin, almost half have balconies or windows to open. Public areas Spacious decks, a generous wellness and SPA area, fitness with sea view and much more: on board the SEA CLOUD SPIRIT, one does not only enjoy the freedom under sails.



The Small Cruise Ship Collection

www.small-cruise-ships.com

01432 507 280 (within UK)

info@small-cruise-ships.com | small-cruise-ships.com

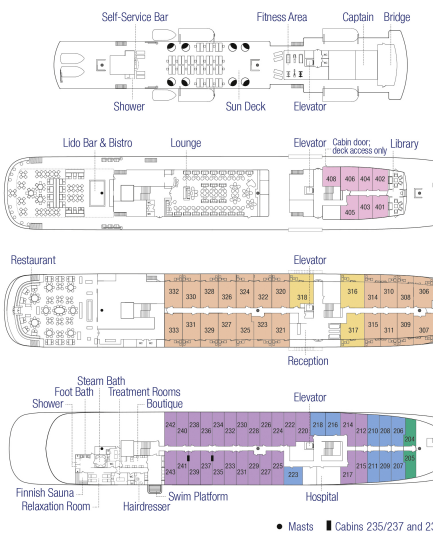
The Small Cruise Ship Collection

www.small-cruise-ships.com

small-cruise-ships.com

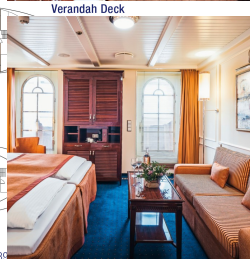
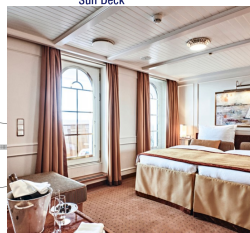
info@small-cruise-ships.com

INSIDE YOUR SHIP



Category A: Suites with balcony. From

Category B: Junior suites with balcony



Cabin Categories:

- Cat. A ■ Suites with balcony
- Cat. B ■ Junior suites with balcony
- Cat. C ■ De luxe lido cabins, outside
- Cat. D ■ De luxe cabins, outside
- Cat. E ■ Superior cabins, outside
- Cat. F ■ Superior single cabins, outside

Category C: De luxe lido cabins, outside. From

Category D: De luxe cabins, outside.

Category E: Superior cabins, outside. From

Category F: Superior single cabins, outside



The Small Cruise Ship Collection

www.small-cruise-ships.com

small-cruise-ships.com

info@small-cruise-ships.com

PRICING

08-Sep-2025 to 15-Sep-2025

Category E: Superior cabins, outside. From	£4685 GBP pp
Category D: De luxe cabins, outside. From	£5419 GBP pp
Category F: Superior single cabins, outside. From	£5809 GBP pp
Category C: De luxe lido cabins, outside. From	£6189 GBP pp
Category B: Junior suites with balcony. From	£7305 GBP pp
Category A: Suites with balcony. From	£8379 GBP pp