



The Small Cruise  
Ship Collection

[www.small-cruise-ships.com](http://www.small-cruise-ships.com)

[small-cruise-ships.com](http://small-cruise-ships.com)

[info@small-cruise-ships.com](mailto:info@small-cruise-ships.com)

## MADAGASCAR & SEYCHELLES: NATURAL TREASURES OF THE INDIAN OCEAN – WITH SMITHSONIAN JOURNEYS

In alliance with Smithsonian Journeys. This cruise is part of a collection of PONANT voyages that are specially-tailored for English-speaking travelers who want to engage with the world. In addition to the usual elements of the PONANT experience, the listed price for these voyages includes transfers to and from the ship, talks and discussions aboard ship by world class experts, and a shore excursion or activity in each port of call that encourages guests to embrace the sights, sounds, tastes, and smells of the local environment and culture. The western reaches of the Indian Ocean contain some of the most beautiful tropical islands in the world, and this 11-day voyage aboard Le Bougainville introduces the very best of them, as you sail from northern Madagascar through more than 1,000 miles of the Seychelles Archipelago. Along the way, you will encounter coral reefs teeming with fish, colonies of seabirds breeding and nesting on jagged volcanic cliffs, lush vegetation, unbelievably picturesque beaches, and the opportunity to enjoy the natural beauty of an expansive open sea. From Nosy Be in northern Madagascar, spend your first day exploring two islands: Nosy Tanikely, a tiny islet with a magnificent white sand beach on an unbelievably blue lagoon with an exceptional diversity of marine and terrestrial life; and the "lemur island" of Nosy Komba, covered in dense tropical rainforest that is the ideal habitat for the small mammals that are emblematic of Madagascar. Le Bougainville arrives next at Nosy Hara, a marine protected area and national park remarkably rich in wildlife: 279 species of coral fish, 108 species of corals, 5 species of sea turtles, whales, dolphins, 31 species of birds, and 18 species of reptiles including the smallest chameleon in the world.

The Small Cruise  
Ship Collection

[www.small-cruise-ships.com](http://www.small-cruise-ships.com)

01432 507 280 (within UK)

[info@small-cruise-ships.com](mailto:info@small-cruise-ships.com) | [small-cruise-ships.com](http://small-cruise-ships.com)

# The Small Cruise Ship Collection

www.small-cruise-ships.com

small-cruise-ships.com

info@small-cruise-ships.com

Rounding the northern tip of Madagascar, your experience continues with two full days in Diego Suarez, the second-largest bay in the world, after Rio de Janeiro. The city (renamed Antsiranana in 1975), was an important naval outpost for the French until the late 20th century, and their influence remains clearly evident in the colonial architecture of the old town. But the primary attraction of the region is the bay itself. Comprising several smaller bays, including the famous Emerald Sea Lagoon and Andovazaha Bay, home to emblematic Sugarloaf Island, Diego Suarez offers splendid beaches, panoramic views, and an inviting, laid-back approach to life. Your ship sails next towards Seychelles and two pristine atolls in the heart of the Outer Islands of the Seychelles. From the beaches of Assumption Island, watch for sea turtles which use its pristine beaches to breed and lay eggs. Saint-François, covered in coconut trees, provides ideal habitat for myriad birds and is a splendid location for both hiking and snorkeling. You head next to Remire Island, prized for its extraordinary biodiversity, especially its rich marine life. Le Bougainville continues north to a group of small granite islands, where you spend a day immersed in the essence of a tropical paradise--turquoise waters inviting you to swim, vegetation sheltering native fauna, and beaches of fine sand fringed with coconut trees. Explore the bird sanctuary of Aride Island, where more than 1.25 million seabirds breed, and La Digue, home to the iconic picture-postcard beach at Anse Source d'Argent. Your cruise ends the following day in Victoria, the capital of Seychelles on the



island of Mahe.

## ITINERARY

Day 1 NOSY BE

Nosy Be (from the Malagasy: Nosy meaning island and Be meaning large), in the Mozambique Channel, is located near the north-eastern coastlines of Madagascar. A former French protectorate, known under the promising name of "the scented island", of volcanic origin, it is located on a maritime route with access to India and Asia. Cosmopolitan, a boulevard of encounters, its mixed-race and multicultural population still remembers its past as a significant trading post. Today, its 321 km<sup>2</sup> enchant lovers of nature and idyllic beaches. Its sumptuous primary forest is home to animals that are endemic to the island

The Small Cruise Ship Collection

www.small-cruise-ships.com

01432 507 280 (within UK)

info@small-cruise-ships.com | small-cruise-ships.com





## The Small Cruise Ship Collection

[www.small-cruise-ships.com](http://www.small-cruise-ships.com)

[small-cruise-ships.com](http://small-cruise-ships.com)

[info@small-cruise-ships.com](mailto:info@small-cruise-ships.com)

as well as surprising flora.

### Day 2 NOSY TANIKELY & NOSY KOMBA

In the heart of the Nosy Be archipelago, discover Nosy Tanikely, nicknamed the "island of little earth." In addition to a magnificent white sand beach bordering a lagoon of crystal-clear waters, the island, which is uninhabited, has exceptional marine and terrestrial biodiversity. Thanks to this, the area has been classified as a "marine and coastal protected area" since 2010. It is a perfect spot for swimming and snorkelling. Hiking fans won't be left out either: a stunning walk that climbs to the summit of the island will enable them to discover the old lighthouse built at the beginning of the 20th century and enjoy superb views over the ocean and surrounding islands.

During your cruise, your ship will stop in Nosy Komba, otherwise known as "lemur island". Not far from the Madagascar mainland, this volcanic island shaped like a gigantic turtle shell is covered in dense tropical rainforest. This vegetation is home to amusing black lemurs - furry orange-brown and black creatures that are surprisingly agile and call to each other from amongst the trees. The many small beaches and the emerald-coloured water make Nosy Komba a natural gem that only a select few visit.

### Day 3 NOSY HARA

Its limestone rock formations rising from the waters, or marine "tsingies" typical of Madagascar, make Nosy Hara both

exceptional and immediately recognisable. Located to the north-west of Madagascar, the island is a protected area due to its incredible biodiversity. It is a veritable open-air aquarium inhabited by around 280 marine species. The rocky columns edged with gorgeous white-sand and pebble beaches fading into shades of deep blue make an idyllic place cut off from the world. Succumb to the charms of this untouched jewel that will welcome you into its stunning decor for a special experience. This is an ideal location for snorkelling.

### Days 4 - 5 DIEGO SUAREZ (ANTSIRANANA)

A jewel on the north coast of Madagascar, Diego Suarez, also known as Antsiranana, reveals itself in all of its splendour, from its idyllic beaches to its turquoise waters and its mountains. Enjoy the gentleness of its heavenly stretches of fine sand and fall under the spell of its pristine landscapes where nature reigns supreme. Diego Suarez is not only a nature sanctuary home to certain endemic species such as the brookesia micra, one of the world's smallest chameleons, it is also a dream location for hikers. You will have the opportunity to discover the Red Tsingy, to the north of the town. Carved out by the Irodo River, this canyon reveals huge ochre rock formations. A captivating sight.

### Day 6 ASSUMPTION ISLAND

Assumption Island is part of the Aldabra group (Outer Islands), situated in the south-west of the Seychelles. Discovered in the mid-18th century by the French captain Nicolas Morphey, this bean-shaped island covered in dunes and shrubs is relatively flat. A handful of people live there, in a small village in the

The Small Cruise Ship Collection  
[www.small-cruise-ships.com](http://www.small-cruise-ships.com)

01432 507 280 (within UK)

[info@small-cruise-ships.com](mailto:info@small-cruise-ships.com) | [small-cruise-ships.com](http://small-cruise-ships.com)



## The Small Cruise Ship Collection

[www.small-cruise-ships.com](http://www.small-cruise-ships.com)

[small-cruise-ships.com](http://small-cruise-ships.com)

[info@small-cruise-ships.com](mailto:info@small-cruise-ships.com)

island's west. The island's beaches are a major egg-laying and breeding site for sea turtles. The surrounding waters are ideal for scuba diving. This is where Jacques-Yves Cousteau filmed some of the scenes for his famous documentary film "The Silent World", released in 1956.

### Day 7 AT SEA

During your journey at sea, make the most of the many services and activities on board. Treat yourself to a moment of relaxation in the spa or stay in shape in the fitness centre. Depending on the season, let yourself be tempted by the swimming pool or a spot of sunbathing. This journey without a port of call will also be an opportunity to enjoy the conferences or shows proposed on board, depending on the activities offered, or to do some shopping in the boutique or to meet the PONANT photographers in their dedicated space. As for lovers of the open sea, they will be able to visit the ship's upper deck to admire the spectacle of the waves and perhaps be lucky enough to observe marine species. A truly enchanted interlude, combining comfort, rest and entertainment.

### Day 8 SAINT FRANÇOIS ATOLL

In the heart of the Outer Islands of the Seychelles, St. François Atoll paints the Indian Ocean in an infinite palette of blues. In the heart of the Outer Islands of the Seychelles, St. François Atoll paints the Indian Ocean in an infinite palette of blues. This coral atoll, made up of the Bijoutier and St. François islands, is exactly what people imagine when they think of the Seychelles. Formed around volcanos having vanished into the abyssal

depths of the Indian Ocean, its islands are protected by splendid and fragile coral reefs. Here, the population is composed of myriad birds on land and of sea turtles and a multitude of fish in the water, making this the ideal place for hiking or snorkelling. Here, the population is composed of myriad birds on land and of sea turtles and a multitude of fish in the water, making this the ideal place for hiking or snorkelling.

### Day 9 RÉMIRE ISLAND

Remire Island is like a piece of confetti in the Indian Ocean and is a captivating place to visit. Located in the Outer Islands of the Seychelles, it is prized for its unique biodiversity, including its exceptionally rich underwater life. The rare inhabitants of this tropical islet watch over its preservation, and a walk amidst its lush vegetation, home to delightful birds, will delight fans of unspoilt areas. For those who love snorkelling, myriad colourful fish live among the coral reefs that border the island.

### Day 10 ARIDE ISLAND & LA DIGUE ISLAND

Aride is an island in the Seychelles situated a few kilometres north-west of Praslin. Listed as a nature reserve, this pearl of the Indian Ocean will seduce you with the beauty of its landscapes of wild cliffs and fine-sand beaches. Protected from human impact and sometimes called "bird capital", it is home to several endemic plants as well as exceptional wildlife. Most notably, it is the refuge of an impressive number of seabirds (Seychelles magpie-robins, terns, noddies, and more), and reptiles, such as Wright's skinks, which can be found in the island's wooded areas. Sea turtles can also be observed on the

The Small Cruise Ship Collection  
[www.small-cruise-ships.com](http://www.small-cruise-ships.com)

01432 507 280 (within UK)

[info@small-cruise-ships.com](mailto:info@small-cruise-ships.com) | [small-cruise-ships.com](http://small-cruise-ships.com)





island's beaches.

La Digue Island is a veritable concentration of all the beauty of the Seychelles. Located 6 km south-east of Praslin, this small piece of land that looks like paradise is the third-largest island in the Seychelles, despite its modest size (5 km by 3 km)! Turquoise waters just asking you to swim in them, lush vegetation sheltering giant tortoises, beaches of fine sand fringed with coconut trees and surrounded with those emblematic large granite rocks with their pink highlights like at the famous Anse Source d'Argent: the perfect picture postcard... Authentic and preserved, the island follows a peaceful rhythm, with the only means of transport along its little roads being bikes or traditional oxcarts.

#### Day 11 VICTORIA, MAHÉ

Discover Mahe, the main island of the Seychelles and also the largest of the archipelago, home to the capital, Victoria. Mahe has almost 70 beaches of fine sand, framed by the emblematic granite rocks, and whose crystal clear waters are renowned for their rich underwater life. The island is also famous for its splendid mountain panoramas accessible on hikes, such as the Morne Seychellois, which is 905 metres high and overlooks the Indian Ocean. Mahe is also an island full of history where fine colonial properties rub shoulders with Creole houses - and don't forget the marvellous Botanical Gardens in Victoria.

Please note:

Itineraries are subject to change.



## The Small Cruise Ship Collection

[www.small-cruise-ships.com](http://www.small-cruise-ships.com)

[small-cruise-ships.com](http://small-cruise-ships.com)

[info@small-cruise-ships.com](mailto:info@small-cruise-ships.com)

## YOUR SHIP: LE BOUGAINVILLE

**YOUR SHIP:** Le Bougainville

**VESSEL TYPE:**

**LENGTH:**

**PASSENGER CAPACITY:**

**BUILT/REFURBISHED:**

Featuring innovative and environmentally-friendly equipment, elegantly designed cabins, spacious suites with large windows, and lounge areas that open onto the outside, this new limited-capacity yacht boasting just 92 cabins and suites will offer you a truly unique cruising experience. As the first ship in a new series that remains true to the Ponant spirit, Le Bougainville will embody the unique atmosphere that is the cruise line's hallmark: a subtle blend of refinement, intimacy and comfort. Aboard this ship that flies the French flag, you will experience the incomparable pleasure of an intimate cruise, with the possibility of exploring an ever-increasing range of destinations in an ethnic-chic ambiance with luxury service. Experience a luxurious setting where the accent is on authenticity and passion for travel. **RESTAURANTS** As it is an essential part of French culture, gastronomy will naturally have pride of place aboard this new ship. Through its two restaurants, Le Bougainville will invite you on a journey to elegance and epicureanism. In a relaxed atmosphere, a first dining area located on Deck 3 and able to seat 70 will serve grilled meats daily, along with a variety of salads and desserts. To the back of Deck 4, you will find a 260 m<sup>2</sup> panoramic restaurant which can accommodate all of

our passengers in a single sitting. Designed differently to that on our other ships, this dining area, which opens onto the outside, will have a buffet of salads, desserts and cheeses at your disposal. Our discreet and attentive crew will provide table service for hot meals. **PUBLIC AREAS** Like Le Boreal and its sisterships, Le Bougainville has many common areas that are designed and equipped to meet all of your needs while preserving the intimacy of each passenger. A 140 m<sup>2</sup> reception area includes: A reception/concierge desk, An excursions desk, The ship's administrative services, The sales office, manned by our Guest Relations Officer, Our 50 m<sup>2</sup> boutique which sells clothing, jewellery, beauty products, postcards and various accessories, Toilets accessible to passengers with reduced mobility. A new hydraulic platform with adjustable height provides: Easier boarding than on any other cruise ship, Easier Zodiac embarkation and disembarkation for expeditions, Easier access to the sea for swimming and practising various water sports such as kayaking or paddle-boarding. A pool deck offering: A pool with a panoramic view, equipped with a counter-current swimming system, A pleasant solarium, An outdoor bar and lounge with armchairs and sofas. A 200 m<sup>2</sup> main lounge which can accommodate all of our passengers to share convivial moments and to host activities organised during the day or evening. Lastly, a theatre that seats 188, equipped with: The latest sound and lighting technology, A LED wall as the stage backdrop, for the projection of high-resolution images and videos. Please click the following links to read more about Ponant and the other Ponant

The Small Cruise Ship Collection

[www.small-cruise-ships.com](http://www.small-cruise-ships.com)

01432 507 280 (within UK)

[info@small-cruise-ships.com](mailto:info@small-cruise-ships.com) | [small-cruise-ships.com](http://small-cruise-ships.com)





The Small Cruise Ship Collection  
www.small-cruise-ships.com

small-cruise-ships.com info@small-cruise-ships.com



cruise ships.

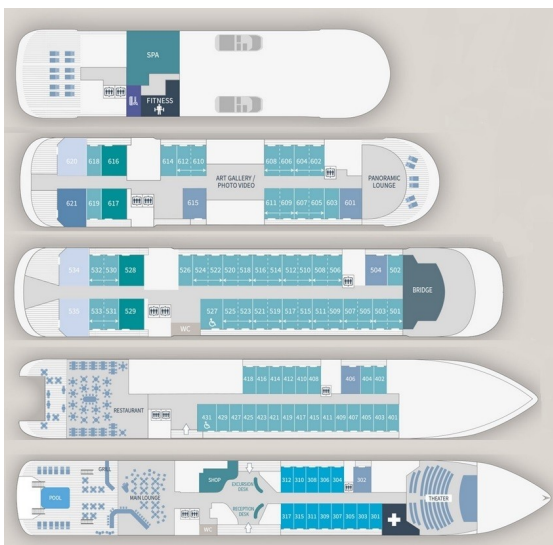
# The Small Cruise Ship Collection

www.small-cruise-ships.com

small-cruise-ships.com

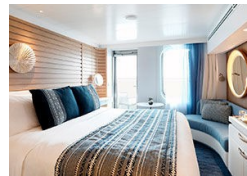
info@small-cruise-ships.com

## INSIDE YOUR SHIP

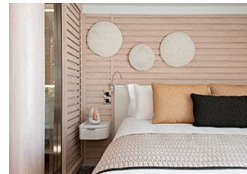


- Owner's Suite Deck 6
- Privilege Suites Deck 5-6
- Grand Deluxe Suites Deck 5-6
- Prestige Suites Deck 5-6
- Deluxe Suites Deck 5-6
- Prestige Cabins Deck 4-5-6
- Deluxe Cabins Deck 3

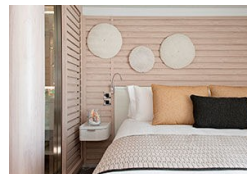
### Deluxe Stateroom



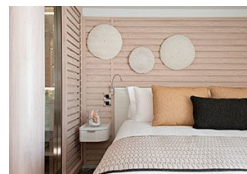
### Deluxe Suite



### Deluxe Suite Deck 3



### Deluxe Suite Deck 4



### Deluxe Suite Deck 5

### Deluxe Suite Deck 6

### Grand Deluxe Suite

### Grand Deluxe Suite Deck 5

### Grand Deluxe Suite Deck 6

### Owner's Suite

### Prestige Deck 4

### Prestige Deck 5

### Prestige Deck 5 Suite

### Prestige Deck 6

### Prestige Deck 6 Suite

### Prestige Stateroom Deck 4

### Prestige Stateroom Deck 5

### Prestige Stateroom Deck 6

The Small Cruise Ship Collection

www.small-cruise-ships.com

01432 507 280 (within UK)

info@small-cruise-ships.com | small-cruise-ships.com





# The Small Cruise Ship Collection

[www.small-cruise-ships.com](http://www.small-cruise-ships.com)

[small-cruise-ships.com](http://small-cruise-ships.com)

[info@small-cruise-ships.com](mailto:info@small-cruise-ships.com)

Prestige Suite Deck 5

Prestige Suite Deck 6

Privilege Suite

Privilege Suite Deck 5



**01432 507 280** (within UK)

[info@small-cruise-ships.com](mailto:info@small-cruise-ships.com) | [small-cruise-ships.com](http://small-cruise-ships.com)

# The Small Cruise Ship Collection

www.small-cruise-ships.com

small-cruise-ships.com

info@small-cruise-ships.com

## PRICING

### 07-Jan-2026 to 17-Jan-2026

Prestige Deck 5 Suite	£17865 GBP pp
Deluxe Suite Deck 4	£13505 GBP pp
Prestige Deck 6 Suite	£18745 GBP pp
Grand Deluxe Suite Deck 6	£21445 GBP pp
Grand Deluxe Suite Deck 5	£21445 GBP pp
Deluxe Suite Deck 5	£13505 GBP pp
Deluxe Suite Deck 3	£13505 GBP pp
Prestige Deck 6	£10015 GBP pp
Privilege Suite Deck 6	£19625 GBP pp
Deluxe Stateroom	£8339 GBP pp
Privilege Suite Deck 5	£19625 GBP pp
Prestige Deck 5	£9529 GBP pp
Deluxe Suite Deck 6	£13505 GBP pp
Prestige Deck 4	£9135 GBP pp

### 23-Jan-2026 to 02-Feb-2026

Deluxe Stateroom	£7961 GBP pp
Prestige Stateroom Deck 6	£9634 GBP pp
Privilege Suite	£19242 GBP pp
Prestige Suite Deck 5	£17488 GBP pp
Owner's Suite	£22098 GBP pp
Prestige Suite Deck 6	£18365 GBP pp
Grand Deluxe Suite	£21063 GBP pp
Prestige Stateroom Deck 4	£8757 GBP pp
Deluxe Suite	£13122 GBP pp
Prestige Stateroom Deck 5	£9149 GBP pp

### ADDITIONAL CHARGES:

Port Taxes 740 AUD pp