



The Small Cruise Ship Collection

www.small-cruise-ships.com

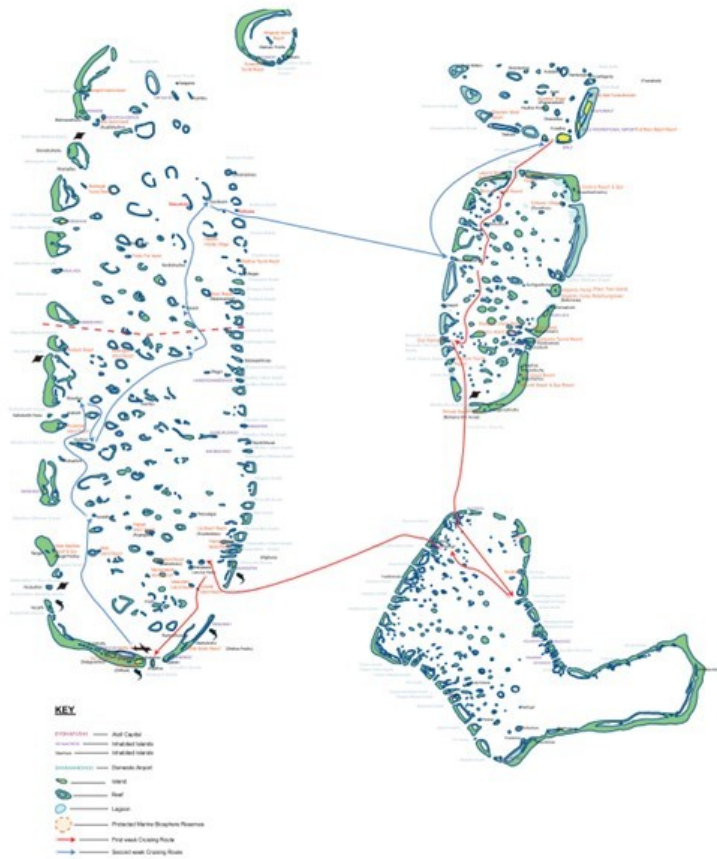
small-cruise-ships.com

info@small-cruise-ships.com

MALDIVES BOUTIQUE CRUISE - WESTERN ATOLLS

Join the crew of Yasawa Princess to explore the extraordinary reefs and atolls of this tiny country from the comfort of a small, boutique cruise ship. The pace of life is slow, with plenty of relaxation interspersed with swimming and snorkelling, and a little exploration. The marine life is amongst the best in the world, with Manta Rays and Whale Sharks as headliners. Highlights include Rangali Madivaru, a Manta Ray cleaning station; Raiydhigaa, a picnic island with a natural harbour where we will have a BBQ on the beach, and some amazing snorkelling opportunities. During the cruise we will visit Sand Banks, Deserted Islands, Picnic and Local Islands. It is possible to combine this cruise with our "Maldives Boutique Cruise - South Male, Vaavu and Ari Atolls" cruise to make a 2 week cruise. Single supplement 30%

MAP of South Male' / Vaavu & Ari Atoll



ITINERARY

Day 1. Maamagili

The boat will be anchored off Maamagili Domestic Airport for



The Small Cruise Ship Collection

www.small-cruise-ships.com

01432 507 280 (within UK)

info@small-cruise-ships.com | small-cruise-ships.com



Arrivals.

Day 2. Hurasdhoo

Short Cruise North West inside the Atoll to Hurasdhoo

Hurasdhoo, a small deserted island with white sandy beach surrounding the island. Nice House reef for avid snorkeler. Beach Umbrellas will be placed if the conditions are favourable.

Optional: Manta Ray excursion, guests will go out to Rangali Madivaru, a manta ray cleaning station. Peak Season (January - April) (chargeable USD15 incl GST)

Night Fishing - Tonight's fishing trip is targeted for reef fish with traditional Handline bottom fishing technique. Whilst we encourage the practice of "catch and release" and sustainable fishing practices, we are also happy to help out and take back a fish for dinner.

Day 3. Embudu

Cruise to Embudu - A small deserted island on the western edge of the atoll, with few plantations and a long stretch of white sandy beach.

Morning and afternoon excursions are arranged, and if conditions are favourable Beach Umbrellas are placed for shade on the beach. The house reef of the island is good for snorkelling, with a bit of luck we might find turtles or Eagle rays passing by.

Night Fishing Trip will be organized by the crew from 1730 Hrs - 1930 Hrs. Traditional Hand Line will be used.

Day 4. Raiydhigaa

Raiydhigaa is a picnic island with a natural harbour. The reef surrounding the island has an enclosed lagoon with 2 narrow channels for vessels to enter. This island has a long white sandy beach on one end. Snorkelers can easily swim from the beach to deeper water.

A full day will be spent on the Island and a picnic Lunch will be prepared by our Chefs. Guests will be taken back to the boat at 1600Hrs. and will return to the island at 1900Hrs for the BBQ Evening. Music and Entertainment after Dinner.

Day 5. Alikoi Rah

Alikoi Rah is a sand bank located in the centre of Ari Atoll, surrounding a well grown reef. Snorkelers love this house reef as there is lot of fish and turtles, and rays can be spotted with some luck. Morning and afternoon excursions arranged to this sand bank. Sunset Cruise to Maaya Sand Bank.

Day 6. Maayafushi Sandbank

A large sand bank located at the northern edge of ari atoll. Flocks of common seabirds can be found on this sand bar. Reef



with lots of nice coral and fish for snorkeling. Sun Umbrellas will be setup if the conditions are favourable.

Day 7. Male

Cross Alihuras Kandu, head back to Male'

For a final swim in the warm indian ocean we will stop at a sand bar on our way back to Male'. The journey from North Ari Atoll to Male' will take around 4-5Hrs. Once we reach Male' our dhoni will be ready to take you to Male' the capital of Maldives, you can visit the local & Fish market, wander around and have an ice cream or do some shopping for souvenirs.

Day 8. Male

End of your cruise, a nice relaxing breakfast overlooking the Indian Ocean before we arrange your transfer for departure to the airport.

Itineraries are subjected to change depending on Weather Conditions,

Island availability and at the discretion of the Captain.

· If an island is unavailable under any circumstance, we will provide an alternative with similar activities.

· BBQ will be arranged on the island depending on the weather, if not events for BBQ night will be moved to the boat, along with music.

· Itineraries will be briefed at Dinner Time for the following day.

· Chargeable Excursions will be billed to your room and settled at the time of check-out.

· There are no Islands / Sand Banks near Male' that we could visit on Arrival /Departure Day.

Please Note:

Itineraries are subject to change.

The Small Cruise Ship Collection

www.small-cruise-ships.com

small-cruise-ships.com

info@small-cruise-ships.com

YOUR SHIP: YASAWA PRINCESS

YOUR SHIP: Yasawa Princess

VESSEL TYPE:

LENGTH:

PASSENGER CAPACITY:

BUILT/REFURBISHED:

Yasawa Princess is a boutique styled yacht that can accommodate up to 56 guests in double or twin ensuite, air-conditioned cabins spread over 3 decks. We have a large indoor dining area with warm wood decor offers a variety of local and international cuisines and our bar serves beer, wine, cocktails and spirits. A fine variety of both local and international cuisine is prepared adding more exotic treats to your cruise. We also arrange private dining ashore on the excursion islands. The resident bar in the dining area offers a wide selection of fine wines, cocktails and spirits, and a variety of beer. Chill out in the forward Lounge in the air condition with a cocktail, browse through our library and catch up on some reading, watch videos, or mingle and make some new holiday friends. Extra activities For the more adventurous guests we offer a number of exciting experiences, from Introductory dives, night snorkelling to Whale shark & Manta snorkelling excursions.





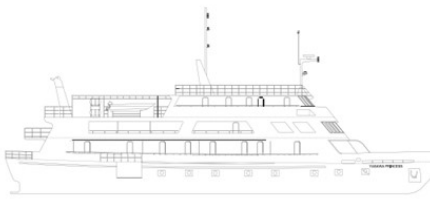
The Small Cruise
Ship Collection

www.small-cruise-ships.com

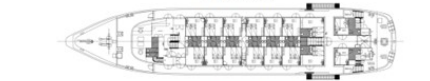
small-cruise-ships.com

info@small-cruise-ships.com

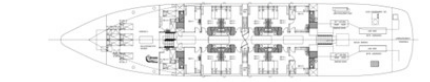
INSIDE YOUR SHIP



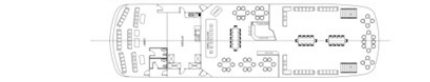
A DECK



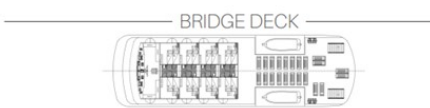
LOWER MAIN DECK



LOUNGE / RESTAURANT / BAR



BRIDGE DECK



A deck cabins - All inclusive



A deck cabins - All inclusive - Sole O



A deck cabins - Full Board - Sole Occupancy

A deck cabins - Full board

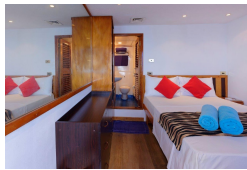


Lower main deck cabin - All Inclusive- Sole

Lower main deck cabin - All inclusive

Lower main deck cabin - full board

Lower main deck cabin - full board -





The Small Cruise Ship Collection

www.small-cruise-ships.com

small-cruise-ships.com

info@small-cruise-ships.com

PRICING

21-Apr-2025 to 28-Apr-2025

A deck cabins - All inclusive - Sole Occupancy	£2276 GBP pp
Lower main deck cabin - All Inclusive- Sole	£2038 GBP pp
A deck cabins - All inclusive	£1748 GBP pp
A deck cabins - Full board	£1568 GBP pp
Lower main deck cabin - All inclusive	£1568 GBP pp
Lower main deck cabin - full board	£1392 GBP pp
A deck cabins - Full Board - Sole Occupancy	£1988 GBP pp
Lower main deck cabin - full board - Sole	£1764 GBP pp

ADDITIONAL CHARGES: Domestic Flights 225 USD pp