

The Small Cruise Ship Collection

www.small-cruise-ships.com

small-cruise-ships.com

info@small-cruise-ships.com

MEDITERRANEAN ISLAND BEAUTIES - A VOYAGE FROM PALMA DE MALLORCA TO LIVORNO

This enchanting journey begins in the vibrant city of Palma de Mallorca, Spain, and ventures to the charming island of Menorca for an extended stay. Following a day of sailing beneath full sails, the adventure continues to Sardinia's picturesque Alghero, then to the stunning cliffs of Bonifacio in Corsica, and the coastal beauty of Calvi. The itinerary also includes a visit to Portoferraio on the idyllic island of Elba before concluding in the historic port city of Livorno, Italy. Each destination offers unique landscapes, rich culture, and memorable experiences.



ITINERARY

Day 1 | Palma de Mallorca, Spain

Departure 7:00 pm

Majorca's beautiful capital is an elegant city and its picturesque old town and architectural mix of Arab, Catalan and Art Nouveau elements are part of its success story. In the center you will be lured by shops behind splendid facades, and cafes and bars set on beautiful squares invite you to stay a while. Not far from the

The Small Cruise Ship Collection

www.small-cruise-ships.com

01432 507 280 (within UK)

info@small-cruise-ships.com | small-cruise-ships.com



The Small Cruise Ship Collection

www.small-cruise-ships.com

small-cruise-ships.com

info@small-cruise-ships.com

sophisticated marina you will find the dignified cathedral, affectionately known as "La Seu" for short. With pure Gothic beginnings, none other than Antonio Gaudi created part of its interior at the start of the 20th century.

Day 2 | [Mahón, Menorca](#)

Arrival 2:00 pm

Mahon, the island's capital, has the largest natural harbor in the Mediterranean. The harbor of the former capital, Ciutadella, which translates as "tiny little town", has a picturesque setting on a fjord-like bay. It is one of the most beautiful cities in Spain and you will be enchanted by the narrow lanes in the old town, the majestic squares and the smart promenades. Menorca naturally has two sides - in the north is the wild mountain region of Tramuntana, with its ruggedly craggy coastline and hidden bays. In the south there are gentle hills with wide plains and seemingly endless sandy beaches. Listed as a Biosphere Reserve by UNESCO, Majorca's little sister is considerably quieter and more traditional.

Day 3 | [Mahón, Menorca](#)

Departure 2:00 pm

Mahon, the island's capital, has the largest natural harbor in the Mediterranean. The harbor of the former capital, Ciutadella, which translates as "tiny little town", has a picturesque setting on a fjord-like bay. It is one of the most beautiful cities in Spain and you will be enchanted by the narrow lanes in the old town, the majestic squares and the smart promenades. Menorca naturally has two sides - in the north is the wild mountain region

of Tramuntana, with its ruggedly craggy coastline and hidden bays. In the south there are gentle hills with wide plains and seemingly endless sandy beaches. Listed as a Biosphere Reserve by UNESCO, Majorca's little sister is considerably quieter and more traditional.

Day 4 | [Day under full sails](#)

Day under full sails

Climbing the rigging, untying ropes, setting sails - today is all about sailing. Time to lean back and relax in the deck chair and watch the passionate crew hoisting the sails by hand.

Day 5 | [Alghero, Sardinia](#)

Arrival 8:00 am, Departure 5:00 pm

A beautiful beachside promenade and, on a headland, the old town of Alghero which sits defiantly behind thick fortifications. Alghero is something very special. Many buildings and squares in the charming old town were built when it was ruled by the Catalans and some of the inhabitants still speak a dialect of Catalan today. That's why the town is also lovingly known as "Little Barcelona". Grand palaces, numerous churches and towers, winding lanes and lively squares with snug bars and restaurants transport you into the Middle Ages with a Catalan-Gothic character.

Day 6 | [Bonifacio, Corsica](#)

Arrival 8:00 am, Departure 1:30 pm

The Small Cruise Ship Collection

www.small-cruise-ships.com

01432 507 280 (within UK)

info@small-cruise-ships.com | small-cruise-ships.com



The Small Cruise Ship Collection

www.small-cruise-ships.com

small-cruise-ships.com

info@small-cruise-ships.com

The chalk cliffs are visible even from a long way away and fall away steeply into the sea like a wall - around 70 meters (230 foot) high. Hidden behind them is a fjord-like inlet, which provides the beautiful entrance into the natural harbor of Bonifacio. The elegant modern lower town is set around the harbor with a promenade that runs the length of the deep harbor bay and leads to the elegant marina. More than 187 stone steps, majestically named the "Staircase of the King of Aragon", lead you up to the medieval upper town which sits lofty and impregnable high up on the top of a steep chalk cliff.

Day 7 | Calvi, Corsica

Arrival 8:00 am, Departure 1:30 pm

Calvi has something enjoyable to suit every taste. Romantics can take a walk through the old town and the view from the fortified walls is not to be missed. A stroll through the town's streets brings you to the colorful, lively lower town with its bars and exclusive cafes. Anyone who enjoys a walk on the sand will love the town's long beach. To the east, sheltered by the highest mountains in Corsica, a lush green wild garden has grown around Calvi, filled with olive groves and orange trees. In the La Balagne region in the interior, you can discover hidden picturesque villages which show you the traditional side of Corsica and, displaying the idiosyncratic pride on the island, there is scarcely a road sign that is not written in the Corsican language.

Day 8 | Portoferraio, Elba

Arrival 1:30 pm, Departure 10:00 pm

Although Elba is only a small Tuscan island, you will be surprised by how diverse it is. Imposing cliffs, white sandy beaches, avenues of cypresses, vineyards and olive groves, traditional villages and elegant beach resorts make the place of Napoleon's exile somewhere you would in fact like to be banished for longer. The beautiful old town of Portoferraio with its narrow streets of steps and medieval fortress is set high up on a rocky headland. In the enchanting town of Porto Azzurro, the palm-lined promenades, charming piazzas and small beach are at the center of the town's activities.

Day 9 | Livorno, Italy

Disembarkation

Please note:

Itineraries are subject to change.

The Small Cruise Ship Collection

www.small-cruise-ships.com

01432 507 280 (within UK)

info@small-cruise-ships.com | small-cruise-ships.com

The Small Cruise Ship Collection

www.small-cruise-ships.com

small-cruise-ships.com

info@small-cruise-ships.com

YOUR SHIP: SEA CLOUD II

YOUR SHIP:	Sea Cloud II
VESSEL TYPE:	Tall Ship (Sailing)
LENGTH:	105 metres
PASSENGER CAPACITY:	96
BUILT/REFURBISHED:	2001

Launched in 2001, Sea Cloud II is a stunning vessel, built along traditional lines, but offering deluxe accommodation. She combines timeless elegance of sailing ships of the past with the highest safety standards and the luxurious comfort of modern cruise ships. Just like her legendary sister ship Sea Cloud, the 29,600 square feet of sails is set by hand which is a truly magical sight. Built to accommodate 96 passengers in five star luxury, she offers a range of beautifully appointed suites and cabins which are furnished with great style. All accommodations have outside views and the bathrooms, in light marble, are unusually spacious and extremely comfortable. The finest, carefully chosen fabrics, combined with leather, rattan and other materials, brass and gold, precious woods and marble together create an impressive ensemble. No expense has been spared to create a sympathetic ambience in both the accommodations and public areas and this is reflected throughout the vessel. Public areas include an elegant lounge, library, fitness centre, boutique, lido bar and hospital. The single sitting dining room is airy and modern and the quality of the cuisine and service will be to the highest of standards, as one would expect on a Sea Cloud cruise. Relax on the Lido deck and experience the natural

grandeur of travelling under sail, rekindling memories of a



bygone age.

The Small Cruise Ship Collection

www.small-cruise-ships.com

01432 507 280 (within UK)

info@small-cruise-ships.com | small-cruise-ships.com

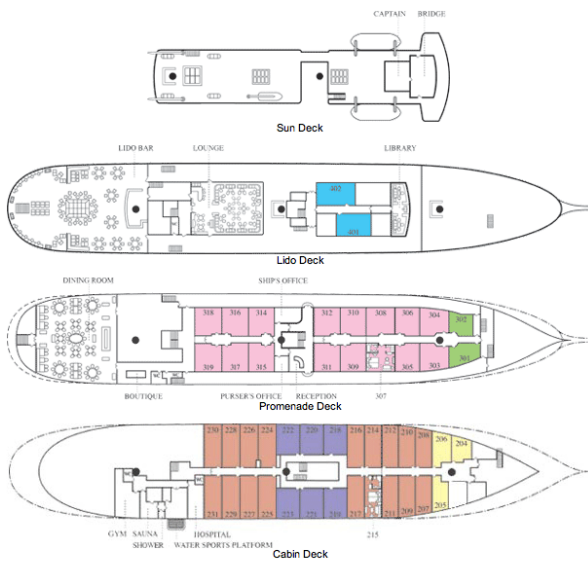
The Small Cruise Ship Collection

www.small-cruise-ships.com

small-cruise-ships.com

info@small-cruise-ships.com

INSIDE YOUR SHIP



Please note that category F cabins have one lower and one upper berth bed



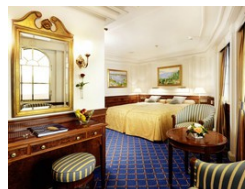
Category A. From



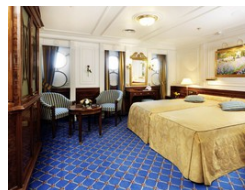
Category B. From



Category C. From



Category D. From



Category E. From

Category F Upper/Lower Beds. From



The Small Cruise
Ship Collection

www.small-cruise-ships.com

small-cruise-ships.com

info@small-cruise-ships.com

PRICING

24-Apr-2026 to 02-May-2026

Category F Upper/Lower Beds. From	£4725 GBP pp
Category E. From	£5355 GBP pp
Category D. From	£6305 GBP pp
Category C. From	£6459 GBP pp
Category B. From	£7249 GBP pp
Category A. From	£8195 GBP pp