



The Small Cruise
Ship Collection

www.small-cruise-ships.com

small-cruise-ships.com

info@small-cruise-ships.com

MYTHICAL SITES & ISLANDS OF SOUTH-EAST ASIA - THAILAND, MALAYSIA & INDONESIA CRUISE

From Bali to Phuket, set off on an all-new 16-day cruise to discover the coasts of South-East Asia. Dive into the Indonesian cultural melting pot, immersing yourself in the diversity of the landscapes featuring jungle, volcanic mountains and white sandy beaches. PONANT invites you to discover the natural jewels and historic cities of Malaysia and Thailand, with their heavenly islands, exceptional natural heritage, and cultural discoveries at the crossroads of Asian and Western influences. Throughout your journey, you will benefit from an excursion included per person per port of call, to choose from a selection offered by PONANT. During this cruise, set off to discover Borobudur, the world's largest Buddhist compound, appreciate the surrealist landscape of Mount Bromo and explore the historical city of Malacca, which is a UNESCO World Heritage Site. The diversity of experiences on offer promises you intense and varied moments (to discover the full range of excursions, go to the itinerary tab). Leaving from the "island of gods", Bali, Le Laperouse will set sail to Java with a first port of call in Probolinggo, from where you will travel to Mount Bromo. Following a morning departure from the ship, once you reach the top of the crater, you will observe a lunar landscape. The journey will continue to Surabaya, nicknamed "the city of heroes" due to the important role it played in the country's independence during the Indonesian National Revolution. On the north coast of Java, Semarang, a cosmopolitan city with Chinese, Indo-Arabic and European influences, stands before you. From there, you will set off to discover the incredible site of Borobudur. Listed as a UNESCO World Heritage Site, this monumental Buddhist temple compound from the 8th and 9th centuries is an artistic

The Small Cruise
Ship Collection

www.small-cruise-ships.com

01432 507 280 (within UK)

info@small-cruise-ships.com | small-cruise-ships.com

The Small Cruise Ship Collection

www.small-cruise-ships.com

small-cruise-ships.com

info@small-cruise-ships.com

marvel with over 500 Buddha statues. On Bangka Island, a veritable verdant jewel off the east coast of Sumatra, you enjoy unique moments far from overcrowded beaches. Protected by immense granite rocks, Parai Beach, north-east of Bangka Island, is a tropical Eden. Le Laperouse will then reach the southern tip of Malaysia and make a port of call in Singapore, a multicultural city rich in contrasts whose Botanic Gardens are a UNESCO World Heritage Site. You cross the Strait of Malacca, once a strategic hub of the spice and silk trade, and discover the colourful and multicultural island of Penang, known for its British colonial buildings, its Chinese shops and its mosques. The ship heads to Langkawi Island, where you will discover scenery including picturesque rice fields and hills covered in rainforest. Your cruise continues along the coast of Thailand. In a sublime setting of emerald water, karstic cliffs, mangrove and white sand, Le Laperouse also drops anchor off the coast of the uninhabited island of Ko Rok Nok, a paradise for swimming and relaxation. Your trip will end in the province of Phang Nga, to the north of the island of Phuket. With vast stretches of lush old-growth forest, stunning waterfalls and sublime fine-sand beaches, it is one of the wildest regions



in Thailand.

ITINERARY

Day 1 BENOA, BALI

If it's a taste of exotic authenticity you're after, prepare to be spell-bound by the island of Bali, tucked away in the heart of the Indonesian archipelago. The beauty and diversity of its landscapes, the depth and richness of its cultural heritage and the plethora of activities on offer here make Bali a little slice of heaven on Earth. The island's southern coast enthralls with its white sand beaches, its picturesque little fishing villages such as Benoa, and its hills patchworked with terraced rice paddies further inland. Nicknamed 'the Island of Gods' for its sumptuous temples, Bali is the beating heart of Indonesian Hinduism.

The Small Cruise Ship Collection

www.small-cruise-ships.com

01432 507 280 (within UK)

info@small-cruise-ships.com | small-cruise-ships.com



The Small Cruise Ship Collection

www.small-cruise-ships.com

small-cruise-ships.com

info@small-cruise-ships.com

Day 2 AT SEA

During your journey at sea, make the most of the many services and activities on board. Treat yourself to a moment of relaxation in the spa or stay in shape in the fitness centre. Depending on the season, let yourself be tempted by the swimming pool or a spot of sunbathing. This journey without a port of call will also be an opportunity to enjoy the conferences or shows proposed on board, depending on the activities offered, or to do some shopping in the boutique or to meet the PONANT photographers in their dedicated space. As for lovers of the open sea, they will be able to visit the ship's upper deck to admire the spectacle of the waves and perhaps be lucky enough to observe marine species. A truly enchanted interlude, combining comfort, rest and entertainment.

Day 3 PROBOLINGGO, JAVA

Nestled inside the massive Tengger caldera surrounded by a sea of sand, Mount Bromo is the epitome of desolate beauty. The volcanic complex dates back to about 820,000 years ago and consists of five overlapping stratovolcanoes, each truncated by a caldera. Lava domes, pyroclastic cones, and a maar occupy the flanks of the massif. The surreal lunar landscape has spurned countless legends and myths. Mt Bromo has particular significance for the Hindu Tengger people who believe that this was the site where a brave prince sacrificed his life for his family. After an early departure from the ship guest will travel by bus to Mount Bromo to enjoy this surreal site.

Day 4 SURABAYA, JAVA

Surabaya, a dynamic city with colonial heritage, stands before you like an Indonesian jewel at the mouth of the Mas River and along the Madura Strait, in the north of the island of Java. In this cradle of tortured passions and flamboyant fates, you will stroll the maze of narrow streets of this city with a thousand faces, where the fight for Indonesian independence began in 1945. Yet this vibrant and heroic façade hides age-old treasures. Fall under the spell of the Trowulan archaeological site and its emblematic Wringin Lawang gate.

Days 5 - 6 SEMARANG

Semarang enjoys a strategic location on the northern coast of Java, making it a cosmopolitan port town and a melting pot of Chinese, Indo-Arabic and European cultures. Before setting off to explore the region's treasures, take a tour of the old town and its smattering of old colonial buildings. Here in Indonesia's most Chinese town, don't miss a trip to the Chinatown district. If it's culture you're after, journey deeper into the green, rolling inland region, passing by volcanoes and rice paddies until you reach the royal town of Yogyakarta and one of its ancient kingdoms, the Borobudur : this Buddhist temple is a UNESCO World Heritage Site and one of the world's largest temples.

Day 7 AT SEA

During your journey at sea, make the most of the many services and activities on board. Treat yourself to a moment of relaxation in the spa or stay in shape in the fitness centre. Depending on

The Small Cruise Ship Collection
www.small-cruise-ships.com

01432 507 280 (within UK)

info@small-cruise-ships.com | small-cruise-ships.com



The Small Cruise Ship Collection

www.small-cruise-ships.com

small-cruise-ships.com

info@small-cruise-ships.com

the season, let yourself be tempted by the swimming pool or a spot of sunbathing. This journey without a port of call will also be an opportunity to enjoy the conferences or shows proposed on board, depending on the activities offered, or to do some shopping in the boutique or to meet the PONANT photographers in their dedicated space. As for lovers of the open sea, they will be able to visit the ship's upper deck to admire the spectacle of the waves and perhaps be lucky enough to observe marine species. A truly enchanted interlude, combining comfort, rest and entertainment.

Day 8 PARAI BEACH

The Indonesian Bangka Belitung archipelago, off the eastern coast of Sumatra, is renowned for its beautiful unspoilt beaches and superb diving. Protected by immense granite rocks, Parai Beach, north-east of Bangka Island, is a tropical Eden. Once you're comfortably installed in the shade of palm trees at the water's edge, you'll succumb to the ease and tranquillity of this picture-postcard setting.

Days 9 - 10 SINGAPORE

Nicknamed the Garden City, Singapore stretches across Malaysia's southern-most region. Experience the vibrant hustle and bustle of this city-state for yourself at the Marina Bay. No too far away is the historic centre, offering up a unique smorgasbord of neoclassical buildings and contemporary towers. Decked out in topiary, the pavements of Orchard Road are also home to countless shopping centres. The colourful markets in Chinatown and Little India are the perfect opportunity

to quell hunger pangs in a hawker centre, one of the city's traditional snack bars. Between the two districts, get a slice of history with a trip to the Raffles dock. It was here that Englishman Sir Raffles, the founder of the city, is said to have arrived one fateful day in January 1819.

Day 11 MALACCA

Lying along the shores of the eponymous Strait, Malacca City has been listed as a UNESCO World Heritage Site. A witness of the maritime traffic between Asia and the West, the city is inextricably linked to the trade of spices and silk. This cultural oasis will show you the history of a fascinating ancient civilisation, the Baba Nyonya, the descendants of Chinese immigrants who married Malay women. In a Peranakan house in Chinatown, you will discover the Baba Nyonya Heritage Museum, which reproduces the interior of a traditional elegant home from the 19th century. The Baba Nyonya were wealthy traders who liked to indulge their taste for sumptuous furniture made from teak and mother-of-pearl, rare jewels and silk brocade.

Day 12 PENANG (GEORGETOWN)

The leading British trading post of the Far East in the 19th century, this tiny island has a unique atmosphere of both East and West. Known as the "Pearl of the East" in the past, for its many trades of spice, fabrics, and tin, Penang has become one of the most sought-after destinations in Malaysia. George Town, its capital, is home to an extremely rich historical heritage, a UNESCO World Heritage Site. Be sure to discover the Blue

The Small Cruise Ship Collection

www.small-cruise-ships.com

01432 507 280 (within UK)

info@small-cruise-ships.com | small-cruise-ships.com



The Small Cruise Ship Collection

www.small-cruise-ships.com

small-cruise-ships.com

info@small-cruise-ships.com

Mansion, a real architectural marvel that blends traditional Chinese style with eastern elements.

Day 13 LANGKAWI ISLAND

Langkawi Island or Pulau Langkawi, also known as the "Malaysian paradise", is the largest island in the eponymous archipelago. Composed of a group of 104 mostly uninhabited islands sitting atop the Andaman Sea, the archipelago, listed as a UNESCO Global Geopark, is brimming with natural wonders. Vast beaches of white sand line the contours of this island. Inland, it features jungle-covered hills, picturesque rice fields, ancient rock formations, and spectacular mountain peaks. The island is also home to several factories processing gamat, a sea cucumber used to produce a cream sought after for its medicinal and cosmetic virtues.

Day 14 KO ROK NOK ISLAND

In the district of Ko Lanta in southern Thailand, Koh Rok island is actually two uninhabited twin islands, Koh Rok Nok and Koh Rok Nai. In the heart of a protected national park, Koh Rok Nok presents authentic scenery with lush vegetation, unusual coral reefs and surprising cliffs. At the island's magnificent, crystal-clear beaches in the east, you will be able to have a wonderful time swimming or discovering the underwater world, brimming with myriad, rather friendly colourful fish.

Day 15 PHANG NGA

North of the island of Phuket, the Phang Nga province in southern Thailand is a protected national park since 1981. It is one of the wildest regions in Thailand, with vast stretches of lush old-growth forest, stunning waterfalls and sublime fine-sand beaches. Phang Nga is a province that is rich in traditions and natural beauty. Its bay offers a landscape of limestone karsts that seem to be balancing on the water. It is also home to the island nicknamed "James Bond island", as an homage to the film Man with the Golden Gun, and to the island of Panyi, an unusual floating village with over 200 houses built on stilts and connected by wooden walkways.

Day 16 PHUKET

Phuket, the largest island in Thailand, also known as the pearl of the Andaman, has majestic landscapes enhanced by a magnificent colour palette. Its lively, eponymous capital abounds with beautiful 19th-century houses, with embellished façades, and with markets where fruits and vegetables rival each other for flavours amidst street food stalls emanating appetising aromas. Although Phuket is a much appreciated tourist destination, it has still managed to preserve a few pieces of paradise off the beaten track. The charming shores, surrounded by hills with a thick covering of tropical vegetation, and the white sandy beaches make for an idyllic setting, while the underwater life provides a permanent show.

Please Note:

Itineraries are subject to change.



The Small Cruise Ship Collection

www.small-cruise-ships.com

01432 507 280 (within UK)

info@small-cruise-ships.com | small-cruise-ships.com



The Small Cruise Ship Collection

www.small-cruise-ships.com

small-cruise-ships.com

info@small-cruise-ships.com

YOUR SHIP: LE LAPEROUSE

YOUR SHIP: Le Laperouse

VESSEL TYPE:

LENGTH:

PASSENGER CAPACITY:

BUILT/REFURBISHED:

Featuring innovative and environmentally-friendly equipment, elegantly designed cabins, spacious suites with large windows, and lounge areas that open onto the outside, this new limited-capacity yacht boasting just 92 cabins and suites will offer you a truly unique cruising experience. Aboard this ship that flies the French flag, you will experience the incomparable pleasure of an intimate cruise, with the possibility of exploring an ever-increasing range of destinations in an ethnic-chic ambiance with luxury service. Experience a luxurious setting where the accent is on authenticity and passion for travel. RESTAURANTS As it is an essential part of French culture, gastronomy will naturally have pride of place aboard this new ship. Through its two restaurants, Le Laperouse will invite you on a journey to elegance and epicureanism. In a relaxed atmosphere, a first dining area located on Deck 3 and able to seat 70 will serve grilled meats daily, along with a variety of salads and desserts. To the back of Deck 4, you will find a 260 m² panoramic restaurant which can accommodate all of our passengers in a single sitting. Designed differently to that on our other ships, this dining area, which opens onto the outside, will have a buffet of salads, desserts and cheeses at your disposal.

Our discreet and attentive crew will provide table service for hot meals. PUBLIC AREAS Le Laperouse has many common areas that are designed and equipped to meet all of your needs while preserving the intimacy of each passenger. A 140 m² reception area includes: A reception/concierge desk, An excursions desk, The ship's administrative services, The sales office, manned by our Guest Relations Officer, Our 50 m² boutique which sells clothing, jewellery, beauty products, postcards and various accessories, Toilets accessible to passengers with reduced mobility. A new hydraulic platform with adjustable height provides: Easier boarding than on any other cruise ship, Easier Zodiac embarkation and disembarkation for expeditions, Easier access to the sea for swimming and practising various water sports such as kayaking or paddle-boarding. A pool deck offering: A pool with a panoramic view, equipped with a counter-current swimming system, A pleasant solarium, An outdoor bar and lounge with armchairs and sofas. A 200 m² main lounge which can accommodate all of our passengers to share convivial moments and to host activities organised during the day or evening. Lastly, a theatre that seats 188, equipped with: The latest sound and lighting technology, A LED wall as the stage backdrop, for the projection of high-resolution images and videos. Please click the following links to read more about Ponant and the other Ponant

The Small Cruise Ship Collection

www.small-cruise-ships.com

01432 507 280 (within UK)

info@small-cruise-ships.com | small-cruise-ships.com



The Small Cruise Ship Collection
www.small-cruise-ships.com

small-cruise-ships.com

info@small-cruise-ships.com



cruise ships.

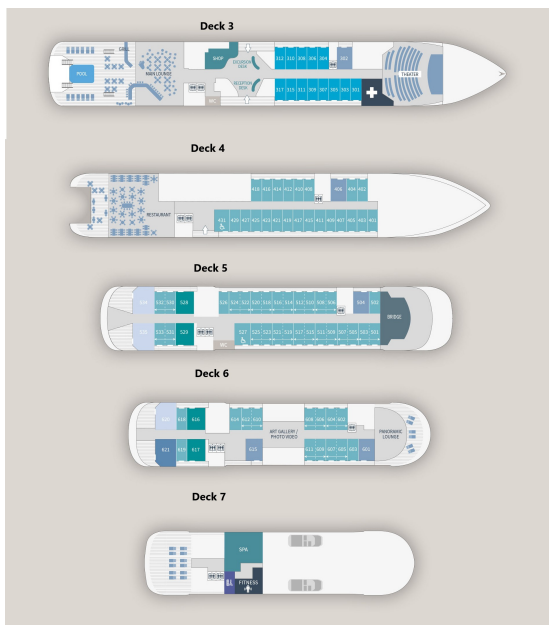
The Small Cruise Ship Collection

www.small-cruise-ships.com

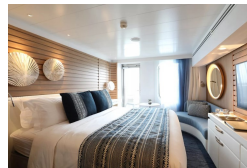
small-cruise-ships.com

info@small-cruise-ships.com

INSIDE YOUR SHIP



Deluxe Stateroom

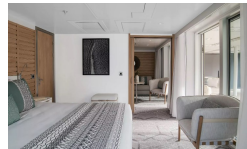


Deluxe Suite



Grand Deluxe Suite

Prestige Stateroom Deck 4



Prestige Stateroom Deck 5

Prestige Stateroom Deck 6

Prestige Suite Deck 5

Prestige Suite Deck 6



The Small Cruise
Ship Collection

www.small-cruise-ships.com

small-cruise-ships.com

info@small-cruise-ships.com

PRICING

10-Feb-2025 to 25-Feb-2025

Prestige Suite Deck 5	£25119 GBP pp
Prestige Stateroom Deck 6	£13225 GBP pp
Prestige Stateroom Deck 5	£12505 GBP pp
Prestige Suite Deck 6	£26435 GBP pp
Privilege Suite	£27755 GBP pp
Prestige Stateroom Deck 4	£11899 GBP pp
Grand Deluxe Suite	£30525 GBP pp
Deluxe Suite	£18509 GBP pp
Deluxe Stateroom	£10705 GBP pp

ADDITIONAL CHARGES: Port Taxes and Fees 1110 AUD pp