

# The Small Cruise Ship Collection

www.small-cruise-ships.com

small-cruise-ships.com

info@small-cruise-ships.com

## NAMIBIAN & SOUTH AFRICAN COASTLINES LUXURY SMALL SHIP CRUISE

Set sail on an all-new, unforgettable 11-day cruise aboard *Le Bougainville* to explore the shores of Namibia and South Africa. From one ocean to another, from Walvis Bay to Durban, explore southern Africa's incredible scenery, flamboyant wildlife and bustling cities. Over the course of your trip, at every port of call, each guest will be able to choose one included excursion from the selection offered by PONANT. On this cruise, from Lüderitz, visit the ghost town of Kolmanskop and its colonial buildings now overrun by sand; discover the spectacular Cape of Good Hope and its unique biodiversity from Cape Town; or admire the elephants in Addo Elephant National Park during a safari, from Port Elizabeth. The range of experiences on offer promises a great time with lots of variety (for the full list of excursions, click on the Itinerary tab). On the Atlantic coast, facing an untameable ocean, lies the Namib Desert, the oldest in the world. In Walvis Bay, where your adventure begins, nature has sculpted the sand into mountains, sheer drops, ochre and rust-coloured waves in perpetual motion. In this area listed as a UNESCO World Heritage Site, silence reigns supreme. And yet this place is teeming with life. Zebras and springboks wash here, while in the neighbouring lagoon, the natural barrier formed by Pelican Point offers thousands of flamingos and cormorants, as well as one of the largest colonies of Cape fur seals, a choice refuge. In Namibia, the desert is king. This is clearly evident in the ghost town of Kolmanskop. A few kilometres from Lüderitz and its pastel-coloured houses clinging to the cliffs, the sand has long since reclaimed the homes of the German settlers, shrouding the abandoned houses in perpetual mystery. In stark contrast to

the serenity of the desert, the bustling cities of South Africa will immerse you in a unique cultural kaleidoscope. Dominated by the distinctive silhouette of Table Mountain, Cape Town reveals its lively streets and colourful gastronomy. After rounding the mythical Cape of Good Hope, discover Port Elizabeth. Known as the "Friendly City" for its hospitality, it is also the gateway to Addo Elephant National Park, famous for its elephants and other iconic African animals. From East London and its beaches of fine sand located on the Sunshine Coast, meet the Xhosa community before your next stop, Durban. In the KwaZulu-Natal region, the cradle of Zulu culture, this city of African, Indian and colonial influences is a perfect example of the term 'Rainbow Nation'. This is where your journey will end, along the white sandy beaches of the



The Small Cruise Ship Collection

www.small-cruise-ships.com

01432 507 280 (within UK)

info@small-cruise-ships.com | small-cruise-ships.com



## The Small Cruise Ship Collection

[www.small-cruise-ships.com](http://www.small-cruise-ships.com)

[small-cruise-ships.com](http://small-cruise-ships.com)

[info@small-cruise-ships.com](mailto:info@small-cruise-ships.com)

Indian Ocean.

### ITINERARY

Days 1 - 2 Walvis Bay

On the **wild coastlines of Namibia**, you will feel the force of the encounter between the infinite dunes of **the oldest desert in the world** and the tempestuous waves of the Atlantic Ocean. A natural port in the curve of a bay formed by an old river delta, **Walvis Bay** is protected from the whims of the ocean by the natural barrier of **Pelican Point**. It is a real refuge for migratory birds, where thousands of **pink flamingos** and Cape cormorants mix with one of the largest **Cape fur seal colonies** in the world. On the Namibian coastline, the seals make the most of the Benguela Current, cold and full of fish, which comes up from the Antarctic.

Day 3 - Lüderitz

Located in Namibia, in southern Africa, **Lüderitz** is a coastal town in the **Karas** region. A former German colony at the gates of the **Namib** desert, this singular town has houses featuring occasionally extravagant colonial architecture. With its sandy streets overlooking the ocean, the small port town gives off a particular atmosphere that will not leave you indifferent. Perched on a granite promontory, the **Felsenkirche Lutheran** church is well worth a visit, as are the **Deutsche Afrika Bank** building and the **Goerke Haus** monument. The **Kolmanskop** ghost town, with its hospital and abandoned colonial houses invaded by the desert sands, looks like it's come straight off a film set.

Day 4 - At sea

During your journey at sea, make the most of the many services and activities on board. Treat yourself to a moment of relaxation in the spa or stay in shape in the fitness centre. Depending on the season, let yourself be tempted by the swimming pool or a spot of sunbathing. This journey without a port of call will also be an opportunity to enjoy the conferences or shows proposed on board, depending on the activities offered, or to do some shopping in the boutique or to meet the PONANT photographers in their dedicated space. As for lovers of the open sea, they will be able to visit the ship's upper deck to admire the spectacle of the waves and perhaps be lucky enough to observe marine species. A truly enchanted interlude, combining comfort, rest and entertainment.

Day 5 - 7 Cape Town

Dynamic and peaceful, cosmopolitan and hip, **Cape Town** offers its visitors a most unique mix. Here, the locals like to say that their city is "the quintessential melting pot of South Africa". Located in the heart of one of the most beautiful bays in the world and dominated by the famous **Table Mountain**, it is graced with extraordinary landscapes including sheer cliffs that plunge into the Atlantic Ocean and vast whitesand beaches. We invite you to discover this incredible city, the South African capital of fashion, the art of living, and gastronomy. Further on, the **Cape of Good Hope** Nature Reserve awaits you and is home to a wide variety of endemic fauna and flora.

Day 8 - Port Elizabeth

The Small Cruise Ship Collection  
[www.small-cruise-ships.com](http://www.small-cruise-ships.com)

01432 507 280 (within UK)

[info@small-cruise-ships.com](mailto:info@small-cruise-ships.com) | [small-cruise-ships.com](http://small-cruise-ships.com)



The Small Cruise  
Ship Collection

[www.small-cruise-ships.com](http://www.small-cruise-ships.com)

[small-cruise-ships.com](http://small-cruise-ships.com)

[info@small-cruise-ships.com](mailto:info@small-cruise-ships.com)

#### Day 11 - Durban

Discover **Port Elizabeth**, one of South Africa's major cities. Located in the province of **Eastern Cape**, Port Elizabeth is nicknamed "The Friendly City", in reference to the hospitality of its inhabitants. Renowned for the beauty of its beaches, Port Elizabeth is also home to rich wild life, particularly in the **Addo National Park**, famous for its elephants. Another key site in the city, the **Donkin reserve** is a public space home to numerous historic monuments. Port Elizabeth also reflects an important aspect of South African history, through both its colonial heritage and its contemporary history marked by the end of apartheid.

Day 9 - East London

Day 10 - At sea

During your journey at sea, make the most of the many services and activities on board. Treat yourself to a moment of relaxation in the spa or stay in shape in the fitness centre. Depending on the season, let yourself be tempted by the swimming pool or a spot of sunbathing. This journey without a port of call will also be an opportunity to enjoy the conferences or shows proposed on board, depending on the activities offered, or to do some shopping in the boutique or to meet the PONANT photographers in their dedicated space. As for lovers of the open sea, they will be able to visit the ship's upper deck to admire the spectacle of the waves and perhaps be lucky enough to observe marine species. A truly enchanted interlude, combining comfort, rest and entertainment.

Situated in the **Kwazulu-Natal** region, the cradle of Zulu culture, **Durban** is the third largest city in South Africa and one of Africa's major ports. Between long beaches rocked by the rollers of the Indian Ocean and the skyscrapers dominating the avenues lined with jacarandas, in this multicultural city with African, Indian and colonial influences, the term "rainbow nation" takes on its full dimension. With a rich cultural and historical heritage, with its museums, colonial buildings and picturesque neighbourhoods, it is also known for the fauna and flora that surrounds it.

Please note:

Itineraries are subject to change.



The Small Cruise  
Ship Collection

[www.small-cruise-ships.com](http://www.small-cruise-ships.com)

01432 507 280 (within UK)

[info@small-cruise-ships.com](mailto:info@small-cruise-ships.com) | [small-cruise-ships.com](http://small-cruise-ships.com)



## The Small Cruise Ship Collection

[www.small-cruise-ships.com](http://www.small-cruise-ships.com)

[small-cruise-ships.com](http://small-cruise-ships.com)

[info@small-cruise-ships.com](mailto:info@small-cruise-ships.com)

## YOUR SHIP: LE BOUGAINVILLE

**YOUR SHIP:** Le Bougainville

**VESSEL TYPE:**

**LENGTH:**

**PASSENGER CAPACITY:**

**BUILT/REFURBISHED:**

Featuring innovative and environmentally-friendly equipment, elegantly designed cabins, spacious suites with large windows, and lounge areas that open onto the outside, this new limited-capacity yacht boasting just 92 cabins and suites will offer you a truly unique cruising experience. As the first ship in a new series that remains true to the Ponant spirit, Le Bougainville will embody the unique atmosphere that is the cruise line's hallmark: a subtle blend of refinement, intimacy and comfort. Aboard this ship that flies the French flag, you will experience the incomparable pleasure of an intimate cruise, with the possibility of exploring an ever-increasing range of destinations in an ethnic-chic ambiance with luxury service. Experience a luxurious setting where the accent is on authenticity and passion for travel. **RESTAURANTS** As it is an essential part of French culture, gastronomy will naturally have pride of place aboard this new ship. Through its two restaurants, Le Bougainville will invite you on a journey to elegance and epicureanism. In a relaxed atmosphere, a first dining area located on Deck 3 and able to seat 70 will serve grilled meats daily, along with a variety of salads and desserts. To the back of Deck 4, you will find a 260 m<sup>2</sup> panoramic restaurant which can accommodate all of

our passengers in a single sitting. Designed differently to that on our other ships, this dining area, which opens onto the outside, will have a buffet of salads, desserts and cheeses at your disposal. Our discreet and attentive crew will provide table service for hot meals. **PUBLIC AREAS** Like Le Boreal and its sisterships, Le Bougainville has many common areas that are designed and equipped to meet all of your needs while preserving the intimacy of each passenger. A 140 m<sup>2</sup> reception area includes: A reception/concierge desk, An excursions desk, The ship's administrative services, The sales office, manned by our Guest Relations Officer, Our 50 m<sup>2</sup> boutique which sells clothing, jewellery, beauty products, postcards and various accessories, Toilets accessible to passengers with reduced mobility. A new hydraulic platform with adjustable height provides: Easier boarding than on any other cruise ship, Easier Zodiac embarkation and disembarkation for expeditions, Easier access to the sea for swimming and practising various water sports such as kayaking or paddle-boarding. A pool deck offering: A pool with a panoramic view, equipped with a counter-current swimming system, A pleasant solarium, An outdoor bar and lounge with armchairs and sofas. A 200 m<sup>2</sup> main lounge which can accommodate all of our passengers to share convivial moments and to host activities organised during the day or evening. Lastly, a theatre that seats 188, equipped with: The latest sound and lighting technology, A LED wall as the stage backdrop, for the projection of high-resolution images and videos. Please click the following links to read more about Ponant and the other Ponant

The Small Cruise Ship Collection  
[www.small-cruise-ships.com](http://www.small-cruise-ships.com)

01432 507 280 (within UK)

[info@small-cruise-ships.com](mailto:info@small-cruise-ships.com) | [small-cruise-ships.com](http://small-cruise-ships.com)



# The Small Cruise Ship Collection

[www.small-cruise-ships.com](http://www.small-cruise-ships.com)

[small-cruise-ships.com](http://small-cruise-ships.com)

[info@small-cruise-ships.com](mailto:info@small-cruise-ships.com)



cruise ships.



The Small Cruise Ship Collection

[www.small-cruise-ships.com](http://www.small-cruise-ships.com)

**01432 507 280** (within UK)

[info@small-cruise-ships.com](mailto:info@small-cruise-ships.com) | [small-cruise-ships.com](http://small-cruise-ships.com)

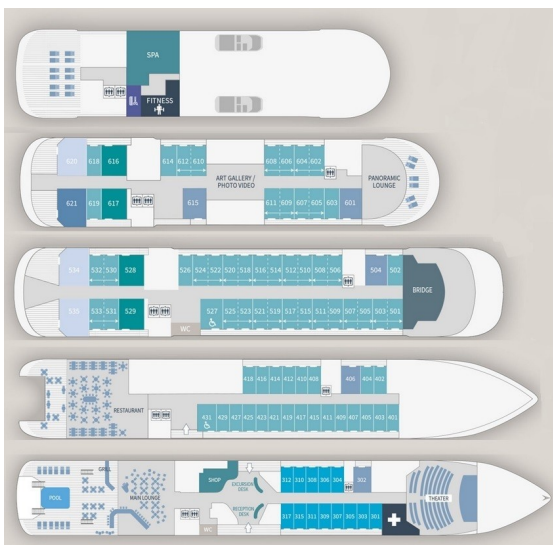
# The Small Cruise Ship Collection

www.small-cruise-ships.com

small-cruise-ships.com

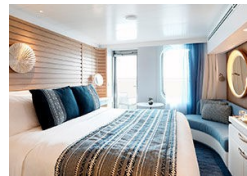
info@small-cruise-ships.com

## INSIDE YOUR SHIP

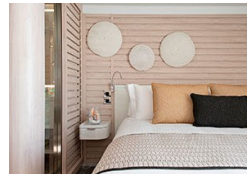


- Owner's Suite Deck 6
- Privilege Suites Deck 5-6
- Grand Deluxe Suites Deck 5-6
- Prestige Suites Deck 5-6
- Deluxe Suites Deck 5-6
- Prestige Cabins Deck 4-5-6
- Deluxe Cabins Deck 3

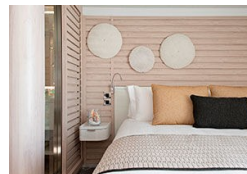
### Deluxe Stateroom



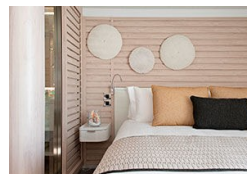
### Deluxe Suite Deck 3



### Deluxe Suite Deck 4



### Deluxe Suite Deck 5



### Deluxe Suite Deck 6

### Grand Deluxe Suite Deck 5

### Grand Deluxe Suite Deck 6

### Owner's Suite

### Prestige Deck 4

### Prestige Deck 5

### Prestige Deck 5 Suite

### Prestige Deck 6

### Prestige Deck 6 Suite

### Privilege Suite Deck 5



# The Small Cruise Ship Collection

[www.small-cruise-ships.com](http://www.small-cruise-ships.com)

[small-cruise-ships.com](http://small-cruise-ships.com)

[info@small-cruise-ships.com](mailto:info@small-cruise-ships.com)

## PRICING

17-Dec-2025 to 27-Dec-2025

Prestige Deck 5 Suite	£12515 GBP pp
Privilege Suite Deck 5	£13835 GBP pp
Prestige Deck 6	£6605 GBP pp
Prestige Deck 5	£6245 GBP pp
Prestige Deck 4	£5945 GBP pp
Deluxe Suite Deck 3	£9235 GBP pp
Privilege Suite Deck 6	£13835 GBP pp
Grand Deluxe Suite Deck 6	£15205 GBP pp
Deluxe Suite Deck 5	£9235 GBP pp
Deluxe Suite Deck 4	£9235 GBP pp
Grand Deluxe Suite Deck 5	£15205 GBP pp
Deluxe Suite Deck 6	£9235 GBP pp
Owner's Suite	£15979 GBP pp
Prestige Deck 6 Suite	£13175 GBP pp
Deluxe Stateroom	£5345 GBP pp