



The Small Cruise Ship Collection

www.small-cruise-ships.com

small-cruise-ships.com

info@small-cruise-ships.com

NEW ZEALAND MOSAIC - 16 DAY CRUISE FROM DUNEDIN TO AUCKLAND

From the South Island and its mountainous terrain to the North Island with its volcanoes and subtropical forest, New Zealand is home to breathtaking nature. Discover the land during a hike, learn about its culture through the history of the M ori people, marvel at its majestic landscapes and admire its most emblematic animals: PONANT invites you to explore this insular country through unforgettable experiences. During a 16-day cruise aboard Le Soleal, lose yourself in the mysteries of the place known as 'the gateway to Antarctica'. Throughout your journey, you will benefit from an excursion included per person per port of call, to choose from a selection offered by PONANT. On this itinerary, take a whale watching cruise departing from Kaikoura, dive into M ori traditions during an unforgettable activity in Napier or, from Tauranga, explore the extraordinary site of Rotorua, home to volcanic and geothermal attractions. The diversity of experiences on offer promises you intense and varied moments (to discover the full range of excursions, go to the itinerary tab). From Dunedin, 'the Edinburgh of the South', Le Soleal will head southwestward to reach the magnificent Fiordland National Park. This park is an integral part of Te Wahipounamu, an area granted World Heritage status by UNESCO. Dusky Sound, Doubtful Sound and Milford Sound: you will discover these fjords shaped by successive glaciations, bordered by majestic cliffs. In Oban too, Scottish influences remain visible. As the only settlement on Stewart Island, the smallest and southernmost of the three main islands of New Zealand, Oban owes its Gaelic name to the eponymous Scottish town. At this new and unique port of call, take a bird watching cruise, hike along the picturesque trails, or visit the town. It is

now time to sail northward to reach the shores of Akaroa. In this bay formed by an old, flooded volcano crater, the unique mix of the M ori, French and European cultures offers a different experience. You will then sail to the rocky peninsula of Kaikoura to admire New Zealand's rich biodiversity. Wellington, the capital of New Zealand, is the next stop on your journey. You will have the opportunity to learn more about the M ori people during a visit to the Museum of New Zealand Te Papa Tongarewa. When your ship calls at Picton, you will discover the Marlborough region, famous for its vineyards and its submerged valleys. On the east coast of North Island, Napier unfolds before you, revealing its treasures in a unique architectural style where the sleek lines of Art Deco buildings mingle with traditional M ori patterns. Soon, Tauranga will welcome you and open the doors to the many treasures of Rotorua: volcanoes, hot springs, geysers, rivers and gorges, and lakes ranging in colour from deep blue to bright orange. On Waiheke Island, opposite Auckland, you will be enchanted not only by the authentic villages nestled at the heart of vineyards but also by the attractive coastline that forms heavenly beaches. In the far north of New Zealand, succumb to the charm of the Bay of Islands, where you will have the opportunity to attend a M ori ceremony. Your cruise will end in Auckland. This New Zealand city bordered by two seas will surprise you with its modernity and its cosmopolitan

The Small Cruise Ship Collection
www.small-cruise-ships.com

01432 507 280 (within UK)

info@small-cruise-ships.com | small-cruise-ships.com

The Small Cruise Ship Collection

www.small-cruise-ships.com

small-cruise-ships.com

info@small-cruise-ships.com



Day 2 AT SEA

During your journey at sea, make the most of the many services and activities on board. Treat yourself to a moment of relaxation in the spa or stay in shape in the fitness centre. Depending on the season, let yourself be tempted by the swimming pool or a spot of sunbathing. This journey without a port of call will also be an opportunity to enjoy the conferences or shows proposed on board, depending on the activities offered, or to do some shopping in the boutique or to meet the PONANT photographers in their dedicated space. As for lovers of the open sea, they will be able to visit the ship's upper deck to admire the spectacle of the waves and perhaps be lucky enough to observe marine species. A truly enchanted interlude, combining comfort, rest and entertainment.

Day 3 SAILING DUSKY SOUND & SAILING DOUBTFUL SOUND

Dusky Sound is one of the most isolated fjords in Fiordland National Park. This huge, protected natural zone situated in the south-west quarter of New Zealand's South Island is listed as UNESCO World Heritage. The sheer cliffs, waterfalls, shimmering lakes and primitive forests here are each more beautiful than the next. These spectacular landscapes sculpted by successive glaciations are a source of endless wonder. In 1773, the British navigator James Cook spent a few weeks at Dusky Sound, as demonstrated by a plaque that can be seen at Astronomer's Point. During your sailing, observe the richness of the local wildlife: cormorants, seagulls, New Zealand fur seals, but also Fiordland crested penguins, a rare and endemic species.

atmosphere.

ITINERARY

Day 1 DUNEDIN

Dunedin is New Zealand's oldest city and is often referred to as the Edinburgh of New Zealand. This city of the south, wears its Scottish heritage with pride. The city contains some of the best preserved Victorian and Edwardian architecture in the Southern Hemisphere. The Silverpeaks hinterland to the North West provides a picturesque backdrop and The Otago Peninsula, which lies within the city boundaries, has internationally renowned wildlife reserves, including the only mainland breeding colony of Northern Royal Albatross.

The Small Cruise Ship Collection
www.small-cruise-ships.com

01432 507 280 (within UK)

info@small-cruise-ships.com | small-cruise-ships.com



The Small Cruise Ship Collection

www.small-cruise-ships.com

small-cruise-ships.com

info@small-cruise-ships.com

Referred to as the Sound of Silence, there is a secluded serenity that surrounds Doubtful Sound in contrast with the better-known Milford Sound. Lieutenant James Cook named 'Doubtful Harbour' in 1770 as he was uncertain if it was navigable under sail. Doubtful Sound is the deepest of the fiords with a maximum depth of 421 m. It contains three distinct 'arms' and several outstanding waterfalls in the area from Deep Cove to the open ocean. Your ship will spend time navigating around Secretary Island through both Thompson and Doubtful Sounds. You will enjoy the spectacular scenery from the outer decks.

Day 4 SAILING MILFORD SOUND

Milford Sound fjord is among one of the most beautiful natural sites in New Zealand. So much beauty will quite simply take your breath away. Located on the south-west coast of South Island, in the Fiordland National Park, this sumptuous inlet carved out by glaciers advances over at least 15 kilometres inland, in the Southern Alps. Majestic cliffs seem to surge out of the dark waters, rising several hundred metres high: an abrupt relief from where impressive waterfalls cascade.

Day 5 OBAN, STEWART ISLAND

On Stewart Island, in New Zealand's deep south, Oban can be found nestling in Halfmoon Bay. This location earned it its Gaelic name meaning 'the little bay' and reflecting its Scottish influences. This town, mainly known for its fishing and tourism, is also a wonderful spot for birdwatching. Hike along the trails or take a cruise to discover the exceptional birdlife. This place will

delight both adventurers who love to explore and travellers looking to spend some time relaxing on the beach.

Day 6 AT SEA

During your journey at sea, make the most of the many services and activities on board. Treat yourself to a moment of relaxation in the spa or stay in shape in the fitness centre. Depending on the season, let yourself be tempted by the swimming pool or a spot of sunbathing. This journey without a port of call will also be an opportunity to enjoy the conferences or shows proposed on board, depending on the activities offered, or to do some shopping in the boutique or to meet the PONANT photographers in their dedicated space. As for lovers of the open sea, they will be able to visit the ship's upper deck to admire the spectacle of the waves and perhaps be lucky enough to observe marine species. A truly enchanted interlude, combining comfort, rest and entertainment.

Day 7 AKAROA

Located at the tip of a peninsula on the east coast of New Zealand's South Island, Akaroa is a popular resort destination, nestled in a cove formed by volcanic eruptions millions of years ago. In the mid-19th century, French and British settlers competed for control of the area, and the architecture of the present-day town reflects these colonial influences in the galleries, craft shops, and cafes that line its streets. But what draws most people to this remote area is the abundant wildlife. Hector dolphins (the world's smallest), Blue Penguins, fur seals, and Orcas populate the waters of the harbor, and the cliffs that

The Small Cruise Ship Collection

www.small-cruise-ships.com

01432 507 280 (within UK)

info@small-cruise-ships.com | small-cruise-ships.com



The Small Cruise Ship Collection

www.small-cruise-ships.com

small-cruise-ships.com

info@small-cruise-ships.com

surround the bay are nesting sites for thousands of birds.

Day 8 KAIKOURA

Located on the South Island of New Zealand, the small town of Kaikoura stretches between the South Pacific and the snow-capped Kaikoura mountain chain, in the heart of a natural and preserved environment that is home to rich and varied wildlife. The peninsular has spectacular limestone formations, and many marine mammals, such as whales, dolphins, seals and sea lions, as well as sea birds can be found near its shores. Initially populated by the original Maori inhabitants for almost a thousand years, the rocky coastlines of Kaikoura then served as an observation post for whalers between the 18th century and the beginning of the 20th century.

Day 9 WELLINGTON

Crowned with gentle green hills, Wellington Harbour is located in the far south of the North Island. This city offers a charming mix of traditional and modern cultures, bestowing on the New Zealand capital, a unique atmosphere, both friendly and avant-garde. Where some sites, like the large National Te Papa Tongarewa Museum, reflect the city's Maori past, others, like the many cafes and restaurants, affirm the inhabitants' incredible lust for life.

Day 10 PICTON

A must-see entry point to the South Island, Picton is a little

coastal town girded by gentle hills, located on the south side of the Queen Charlotte inlet. The cafes and restaurants which border the charming waterfront give a very lovely view of the fjord. You can also decide to get some height above sea level, and walk in the surrounding areas. However, Picton is above all an opportunity to explore the unique Marlborough Sounds. This interweaving of submerged valleys in this area, has creating numerous navigable routes, which are among the most beautiful natural wonders of New Zealand.

Day 11 NAPIER

On the east coast of the North Island, south of Hawke's Bay, you'll find Napier. Mostly destroyed by an earthquake in 1931, reviving from its ashes in less than two years, it grew into a magnificent Art Deco style city, very in-vogue at the time. With its pure lines mixed with traditional Maori designs, the singular New Zealand character of this city will intrigue you. You'll discover all this extraordinary architectural heritage as you take a stroll through the city. Famous for its vineyards, wine lovers will be able to taste some of the best wines from the region.

Day 12 AT SEA

During your journey at sea, make the most of the many services and activities on board. Treat yourself to a moment of relaxation in the spa or stay in shape in the fitness centre. Depending on the season, let yourself be tempted by the swimming pool or a spot of sunbathing. This journey without a port of call will also be an opportunity to enjoy the conferences or shows proposed on board, depending on the activities offered, or to do some

The Small Cruise Ship Collection
www.small-cruise-ships.com

01432 507 280 (within UK)

info@small-cruise-ships.com | small-cruise-ships.com



The Small Cruise Ship Collection

www.small-cruise-ships.com

small-cruise-ships.com

info@small-cruise-ships.com

shopping in the boutique or to meet the PONANT photographers in their dedicated space. As for lovers of the open sea, they will be able to visit the ship's upper deck to admire the spectacle of the waves and perhaps be lucky enough to observe marine species. A truly enchanted interlude, combining comfort, rest and entertainment.

Day 13 TAURANGA

Located to the north of Rotorua, Tauranga stretches the length of the Bay of Plenty, sheltered from the ocean by the island of Matakana. This coastal city boasts a flourishing economy thanks to its port, and is a pleasant and pretty town with a peaceful, relaxed feel. The seafront area is contemporary and lively, dotted with cafes and restaurants. The town centre reveals more picturesque charms, while the surrounding area is packed full of natural delights. Travel on to the town of Rotorua to visit the Wai-O-Tapu Thermal Wonderland: a fantastic opportunity to experience an absolutely exceptional geothermal phenomenon.

Day 14 WAIHEKE ISLAND

In the Hauraki Gulf, Waiheke Island is a pristine nature gem just 35 minutes from the city of Auckland on the North Island of New Zealand. The stunning beaches of its languid bays and the undulating landscapes forming the heart of the island perfectly illustrate the easy way of life here. This land surrounded by sea and bathed in light enjoys a mild climate that is conducive to a thriving agriculture, composed mainly of olive groves and vineyards. Somewhat reminiscent of Tuscany, the island is renowned for its wines. Here, Bordeaux grape varieties have

found the ideal conditions for developing a rich palette of aromas. A symbol of New Zealand's easy lifestyle, Waiheke also boasts a rich arts scene.

Day 15 BAY OF ISLANDS

The Bay of Islands is truly a natural paradise, a jewel hidden in the South Pacific. Its deep-blue waters caress the beaches of golden sand as lush islands with verdant peaks emerge from the sea to form captivating scenery. It was here that in 1840 the Treaty of Waitangi, New Zealand's founding document, was signed between representatives of the British Crown and a number of Maori chiefs from the northern part of the North Island.

Day 16 AUCKLAND

Auckland is New Zealand's largest, most populated and busiest city. Located on an isthmus linking the peninsula of Northland to the expansive North Island, it seems to float between land and sea. It is one of the few cities in the world to have two separate harbours : Manukau Harbour on the Tasman Sea and Waitemata Harbour on the Pacific Ocean. You will understand why Auckland is known as "the City of Sails" when you see the forest of masts in the marina. The 328 metre-high Sky Tower offers splendid views of the city. Surrounded by dormant volcanoes such as Mt Eden, Auckland is noted for its abundant nature and magnificent black-sand beaches. A blend of Maori, European and Asian cultures give the city a vibrant atmosphere.

Please Note:

The Small Cruise Ship Collection

www.small-cruise-ships.com

01432 507 280 (within UK)

info@small-cruise-ships.com | small-cruise-ships.com



The Small Cruise Ship Collection

www.small-cruise-ships.com

small-cruise-ships.com

info@small-cruise-ships.com

Itineraries are subject to change.



01432 507 280 (within UK)

info@small-cruise-ships.com | small-cruise-ships.com

The Small Cruise Ship Collection

www.small-cruise-ships.com

small-cruise-ships.com

info@small-cruise-ships.com

YOUR SHIP: LE SOLEAL

YOUR SHIP:

Le Soleal

VESSEL TYPE:

LENGTH:

PASSENGER CAPACITY:

BUILT/REFURBISHED:

Luxury Small Ship A sleek silhouette, a welcoming intimate atmosphere, and the same philosophy that has made her sister ships, L'Austral, Lyrial and Le Boreal, such a success. This magnificent yacht of only 132 staterooms and suites, all with balconies, has contemporary decor inspired by the luxury yachting world, with fluid lines and a modern colour scheme combining natural wood with shades of grey and white. White Corian counters in the lobby contrast with the warmth of leather to recall a boat's hull, while the central sculpture of enamelled pieces takes its inspiration from the sea. In the lounge bar, the carpet picks up a tennis stripe theme symbolising a certain idea of cruising, one synonymous with French elegance and a chic seaside spirit. Wheelchairs 3 specially adapted wheelchair cabins (Deck 3 = Superior cabin no. 307, no balcony, Deck 4 = Prestige Cabin no. 407 - with balcony and Deck 5 = Prestige Cabin no 509, with balcony) and lifts to all decks/areas. Read about our recent Ponant cruise to Antarctica Please click the following links to read more about Ponant and the other Ponant cruise ships.



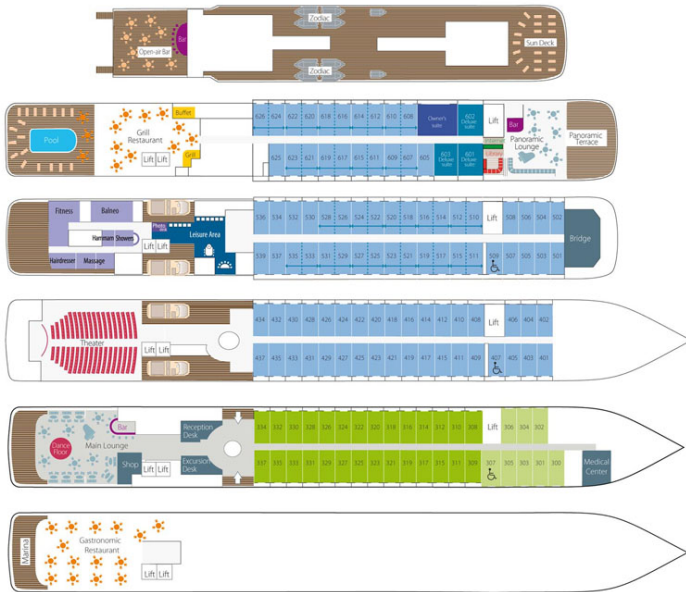
The Small Cruise Ship Collection

www.small-cruise-ships.com

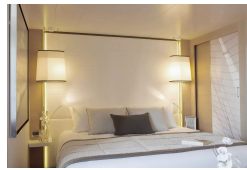
small-cruise-ships.com

info@small-cruise-ships.com

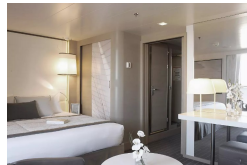
INSIDE YOUR SHIP



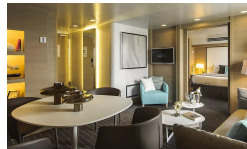
DeLuxe Stateroom



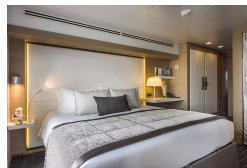
Deluxe Suite



Owner's Suite



Prestige Stateroom - Deck 4



Prestige Stateroom - Deck 5

Prestige Stateroom - Deck 6

Prestige Suite - Deck 5

Prestige Suite - Deck 6



The Small Cruise Ship Collection

www.small-cruise-ships.com

small-cruise-ships.com

info@small-cruise-ships.com

PRICING

31-Dec-2024 to 15-Jan-2025

DeLuxe Stateroom	£10332 GBP pp
Prestige Stateroom - Deck 4	£10909 GBP pp
Prestige Stateroom - Deck 6	£11720 GBP pp
Prestige Suite - Deck 5	£17253 GBP pp
Superior Stateroom	£9526 GBP pp
Prestige Stateroom - Deck 5	£11258 GBP pp
Prestige Suite - Deck 6	£17830 GBP pp
Owner's Suite	£18751 GBP pp
Deluxe Suite	£15990 GBP pp

ADDITIONAL CHARGES: Port Taxes and Fees 1110 AUD pp