

The Small Cruise Ship Collection

www.small-cruise-ships.com

small-cruise-ships.com

info@small-cruise-ships.com

NEW ZEALAND SOUNDS AND STEWART ISLANDS CRUISE

Set sail aboard Coral Adventurer to discover the breathtaking natural wonders of New Zealand's South Island Sounds and Fiords, departing from Bluff. On this 8-night expedition through the World Heritage expanse of Fiordland National Park, explore the majestic Dusky and Doubtful Sounds, home to striking landscapes, rare endemic fauna and numerous seal colonies along New Zealand's secluded western coast. Experience Stirling Falls at Milford Sound, where towering cliffs plunge into glacial waters, creating one of the planet's most remarkable natural landscapes. Wander through the forests of Ulva Island Bird Sanctuary and catch sight of some of the nation's most iconic bird species. Discover the allure of Solander Island, known for its uninhabited volcanic islets and abundant birdlife. At days end, return to the Coral Adventurer and indulge in the delights of New Zealand's celebrated cuisine and wine along with the convivial company of fellow passengers.



ITINERARY

Day 1: Depart Bluff, New Zealand

Guests arriving early can check in with our team and head to the Rydges Lakeland around 10:30am to relax and enjoy light refreshments. A 3-hour complimentary transfer by coach will take you from the hotel to board the Coral Adventurer, docked at Bluff Harbour. After boarding at 4:00pm, there is time to settle into your stateroom before our 5:00 pm departure towards Stewart Island for overnight anchorage. Take in the sights while enjoying Captain's welcome drinks and meet your crew and fellow passengers.

Meeting point for Guests

Rydges Lakeland Resort Queenstown, 38 -54 Lake Esplanade,

The Small Cruise Ship Collection

www.small-cruise-ships.com

01432 507 280 (within UK)

info@small-cruise-ships.com | small-cruise-ships.com



The Small Cruise Ship Collection

www.small-cruise-ships.com

small-cruise-ships.com

info@small-cruise-ships.com

Queenstown

Open from 10:30am guests can check in with one of our team then head to the Reds Bar to relax and enjoy light food offering and tea / coffee / fruit Juice.

Stewart Island, New Zealand

Known in M ori mythology as Te Punga o Te Waka - The Anchor Stone of Maui's Canoe' - Stewart Island (Rakiura) is New Zealand's little known 'third island'. Apart from the communities on the island, many people never venture to remote Stewart Island. Enjoy a guided walk by the expedition team at the Ulva Bird Sanctuary offering a predator-free environment for rare and endangered birds and visit the remains of the Norwegian Whaling base. Spend the rest of your day embarking on a nature cruise and later visit the Oban Township.

Fiordland: Dusky Sound, New Zealand

Fiordland National Park, a World Heritage site once described as the Eighth Wonder of the World by author Rudyard Kipling, is characterised by 14 fiords carving through just 215km of coastline. These fiords were carved by glaciers over thousands of years, and you will see waterfalls cascading down the sheer cliffs, rainforest cloaking the steep ridges, and granite peaks reflected in the deep shimmering waters.

These mostly inaccessible and awe-inspiring landscapes were the mysterious source of powerful pounamu (New Zealand Jade), gathered by M ori from the riverbeds and boulders of the

South Island - the only place it occurs. While some European settlers took shelter here, the deep isolation and rugged terrain thwarted all except the toughest from staying. Many of the flora and fauna species have developed in relative isolation, so many of the diverse plants and animals are unique to the area.

Today, we sail into Dusky Sound which is a remote destination inaccessible by road. Dusky sound is the largest and most complex of the Fiordland Sounds. It is also a designated Bird Area for the Fiordland penguins that breed here. Visit the historic Astronomers Point boardwalk where James Cook set up a temporary observatory in 1773 and encounter the fur seals of Luncheon Cove. Guests will have a chance to explore the Cascade Cove followed by some water activities such as using the ships kayaks for a fun paddle or taking a polar dip in the crystal-clear waters. Depart Dusky Sound cruising through the Acheron and Cook's passages.

Fiordland: Doubtful/Thompson Sound, New Zealand

Doubtful Sound is the deepest and widest fiord, flanked by towering cliffs and adorned by cascading waterfalls. The stillness and silence of this Fiord is compelling and unforgettable. We will cruise into Doubtful Sound and past the Nee Islets and through 'the Gut' and outer Seal colonies where you may spot fur seals lounging on the rocks, and pods of dolphins. If the weather permits, head to nearby Thompson Island and enjoy a walk at Deas Cove.

Fiordland: Milford Sound, New Zealand



The Small Cruise Ship Collection

www.small-cruise-ships.com

small-cruise-ships.com

info@small-cruise-ships.com

Encounter breathtaking views as Coral Adventurer enters the Milford Sound, heading towards the famous Stirling Falls. You will have a chance to feel the spray from Stirling Falls and get a close-up view in your designated Zodiacs/Xplorers. Witness the world-famous view of Mitre Peak, rising some 1,682 meters. Its triangular silhouette rises opposite beautiful Stirling Falls, falling from the top of a 162m high cliff between two towering ridges into the water's deep shades of turquoise and emerald.

Solander Island & Sea Day, New Zealand

Spend the day transiting through the Solander Islands, with the Mori name Hautere translating to 'flying wind', are a trio of uninhabited volcanic islets that lie just beyond New Zealand's South Island. Aboard the Endeavour, Captain James Cook spotted the islands in early 1770, and was named after a Swedish scientific crew member on board, Daniel Solander. The islands have only been known to be inhabited briefly due to marooning or shipwreck.

With one third of the wildlife on the islands being incredibly rare, it is likely that you will spot fernbirds, snipe and white-fronted terns. The island has been declared an Important Bird Area as it is a breeding site for common diving petrels and Buller's albatrosses amassing some 5000 pairs.

Day 9: Arrive Bluff, New Zealand

Prepare for disembarkation as the ship arrives into Bluff Port at 7:00am followed by farewell to the crew and new-found friends

at 8:00am. Enjoy a complimentary transfer by coach to Queenstown hotels or airport after disembarkation.

Please note:

This itinerary is an indication of the destinations we visit and activities on offer. Throughout the expedition we may make changes to the itinerary as necessary to maximise your expeditionary experience. Allowances may be made for seasonal variations, weather, tidal conditions, and any other event that may affect the operation of the vessel. Coral Expeditions suggests that you do not arrive on the day of embarkation or depart on the day of disembarkation due to any changes that may occur in scheduling.



The Small Cruise Ship Collection

www.small-cruise-ships.com

small-cruise-ships.com

info@small-cruise-ships.com

YOUR SHIP: CORAL ADVENTURER

YOUR SHIP: Coral Adventurer

VESSEL TYPE:

LENGTH:

PASSENGER CAPACITY:

BUILT/REFURBISHED:

Launched in 2018 with her maiden voyage in 2019, Coral Adventurer has been designed and built to take you closer to unspoilt vistas in comfort, style and safety. A culmination of two years of design and three decades of passion for expedition cruising. BIGGER IS NOT BETTER At a time when cruise ships get larger and glitzier, we remain stubbornly compact and intimate. Our ships are designed to take you to unspoilt destinations not accessible to large ships. We want you to have the luxury of space, dine with whom you please, or find your quiet corner on deck. So Coral Adventurer has just 60 spacious cabins. This preserves the intimate atmosphere we are known for without sacrificing the stability and comfort of a true ocean going vessel. BUILT FOR DISCOVERY The Coral Adventurer features the trademark dual 'Xplorer' tenders cradled on a hydraulic platform slung off the back of the ship, enabling our guests to go ashore in comfort and ease. The shallow draft of the ship enables us to go closer to shore than larger ships. Together with a renowned expedition team, this new ship will offer the most advanced expedition capabilities of any small ship afloat. BUILT FOR COMFORT With active stabilisers dampening sea motion, mostly balcony cabins, and interiors designed with the colours and

textures of tropical Queensland, the Coral Adventurer is a comfortable ship. She features promenade decks, generous communal areas that accommodate all guests, a passenger elevator, and an open kitchen where you can observe our chefs whip up small batch cuisine from locally sourced ingredients. BUILT FOR PERSONAL SERVICE The Coral Adventurer will continue a proud tradition of Australian flagged vessels with friendly and professional Australian crew. The onboard atmosphere remains refreshingly informal and intimate. Take your seat at our bridge lounge, chat with the captain at your leisure or accompany our chefs on a market tour. Food and wine features Single seating dining area with communal 'wine table' finished with Australian stone; serving buffet breakfast and lunch, and multi-course table d'hote dinners Showcase galley visible to guests for fresh small-batch cuisine featuring Australian produce Multiple indoor and outdoor bars, including the Explorer bar on the sundeck for sunset drinks with 180 degree views Curated wine cellar featuring modestly priced boutique wines for daily drinking and exceptional vintage Australian reds. Guest comfort All outside guest cabins with en-suite bathrooms; majority have private balcony Active stabilisers to dampen sea motion Gym equipped with elliptical trainers and treadmills Passenger elevator Wi-Fi available in all

The Small Cruise Ship Collection
www.small-cruise-ships.com

01432 507 280 (within UK)

info@small-cruise-ships.com | small-cruise-ships.com



guest areas

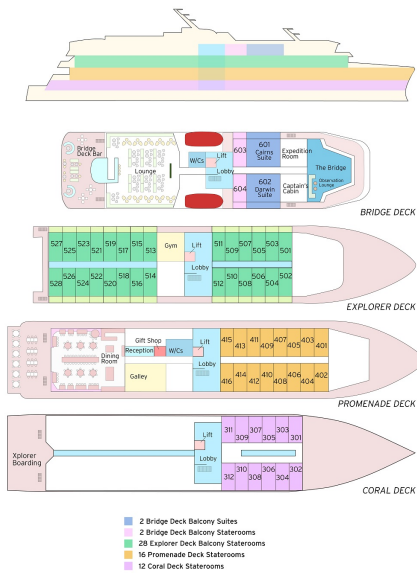
The Small Cruise Ship Collection

www.small-cruise-ships.com

small-cruise-ships.com

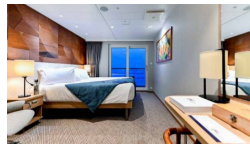
info@small-cruise-ships.com

INSIDE YOUR SHIP



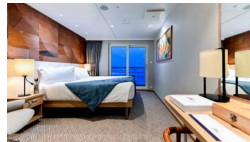
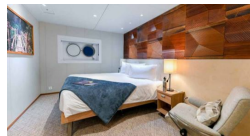
BRIDGE DECK BALCONY STATEROOM

BRIDGE DECK BALCONY SUITE

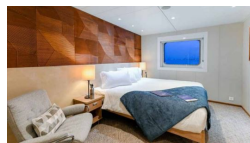


CORAL DECK STATEROOM

EXPLORER DECK BALCONY STATEROOM



PROMENADE DECK STATEROOM





The Small Cruise Ship Collection

www.small-cruise-ships.com

small-cruise-ships.com

info@small-cruise-ships.com

PRICING

16-Jan-2025 to 24-Jan-2025

CORAL DECK STATEROOM	£3901 GBP pp
PROMENADE DECK STATEROOM	£4564 GBP pp
BRIDGE DECK BALCONY SUITE	£8236 GBP pp
BRIDGE DECK BALCONY STATEROOM	£6604 GBP pp
EXPLORER DECK BALCONY STATEROOM	£6094 GBP pp