



## **NORTHWEST PASSAGE EXPEDITION - THROUGH THE ARCTIC LABYRINTH GREENLAND TO ALASKA**

Northwest Passage: the fabled journey through nature's icy maze Sailing through the Northwest Passage on a state-of-the-art ice-class expedition ship is a captivating journey that blends natural wonders, culture and history. The passage, once an elusive route for explorers, now offers intrepid travellers a chance to witness breathtaking Arctic landscapes and learn about Indigenous communities through firsthand experiences. On this adventure, we'll attempt a voyage all the way from Nuuk in Greenland to Nome in Alaska. Breathtaking beauty of Arctic Canada and Alaska Our 26-day voyage takes us 'above' the North American continent to the frozen Far North. In Eastern Arctic Canada, specifically the waterways around Lancaster Sound, you'll experience a pristine and remote wilderness featuring surreal vistas of sea ice. As we pass into the Western Arctic, the region is marked by its proximity to Alaska. Look out for wildlife as we sail through the famed Beaufort Sea and Bering Strait, before ending our transit in Alaska. US Pacific Northwest.



Discover Iceland's modern capital

Your adventure begins with an overnight stay in Reykjavik.

A laid-back city of art, culture and history, delightful Reykjavik is well worth spending some time getting to know.

Take a stroll along Laugavegur with its boutiques and outdoor shops, gaze in awe at the striking Hallgrímskirkja Church, and drop in on the fascinating Reykjavik Art Museum.

If you have the time, we recommend booking a Pre-Programme with us and discovering some of Iceland's natural highlights.

#### DAY 2 Colourful Nuuk

Welcome to the capital of Greenland

Today begins with a flight from Reykjavik to Nuuk, Greenland's colourful capital. It has a population of 18,000, and features a striking mix of old and new buildings.

If time allows, we'll explore this fascinating city, comparing the old buildings - such as Hans Egede House and Nuuk Cathedral - with the ultra-modern architecture of the Parliament of



## ITINERARY

DAY 1 Cosmopolitan Reykjavik



Greenland building.

Your ship awaits you in Nuuk harbour. After collecting your complimentary expedition jacket, it's time to check out your cabin, meet the Expedition Team and explore the ship as we set sail on this epic voyage through the Northwest Passage.

#### DAY 3-5 West Greenland

Discover the magical beauty of West Greenland

The first chapter of our journey encompasses the majestic coast of West Greenland.

\*\* Over the next three days you'll experience some of the most iconic sites in all of Greenland. Our objectives include: \*\*

#### Evighedsfjord

As we head north, we plan to offer an exploration day in the magical and pristine Evighedsfjord near Maniitsoq. We'll determine on the day what adventures we can take part in.

The 'Fjord of Eternity' is fed by an ice cap that calves huge icebergs into its 2,300 ft deep waters. It's surrounded by mist-cloaked mountains with beautiful white ridges, punctuated by crystal blue ice caves.

#### Sisimiut

Sisimiut is Greenland's second city, situated in a spectacular location just above the Arctic Circle. This area has history spanning more than 4,500 years, and old traditions are alive and well.

Learn more about ancient Saqqaq artifacts in the local museum or stretch your legs on a hike. If you're looking for a special souvenir, pick up a scarf, hat or mittens made of qiviut, the inner wool of the musk ox that's said to be 10 times warmer than sheep's wool.

#### Ilulissat

Nestled at the edge of the magnificent Ilulissat Icefjord, a UNESCO World Heritage Site, is Ilulissat. Here you'll find an ever-changing gallery of passing icebergs set against a backdrop of colourful houses. In town you can visit a multitude of shops selling local crafts, and on the outskirts walking trails take you along the epic icefjord.

#### DAY 6-7 Crossing Baffin Bay

Watch for wildlife and get involved in Citizen Science

Leaving Greenland behind, our journey continues to Nunavut across Baffin Bay. The Expedition Team will continue their onboard lectures on topics such as the wildlife of the Arctic,



[small-cruise-ships.com](http://small-cruise-ships.com)

[info@small-cruise-ships.com](mailto:info@small-cruise-ships.com)

Inuit culture and the history of exploration in this region.

Why not take part in one of our Citizen Science projects, helping photograph and track whales, or observing the clouds to help scientists study our climate by contributing to the GLOBE Program.

DAY 8-11 The Eastern Canadian Arctic

### Entering into the Northwest Passage

Following our crossing of Baffin Bay, we find ourselves in the Eastern Canadian Arctic. The main waterway of this area is Lancaster Sound (Tallurutiup Imanga), the eastern gates to the Northwest Passage.

This chapter of our exploration is likely to be action-packed, with excursions planned on each of the four days we hope to spend in and around this area. Remember, all our excursion plans are weather and ice dependent but, conditions permitting, our days will be filled with excitement and discovery.

\*\*Excursion stops and local highlights we hope to share with you include: \*\*

Pond Inlet (Mittimatalik)

Dundas Harbour

Croker Bay

Beechey Island (Iluvilik)

Prince Leopold Island (Appait)

Fort Ross

DAY 12 Bellot Strait

### Navigate the dividing line between East and West

The 'Rubicon' of the Canadian Arctic, dividing East from West, is the infamous Bellot Strait. This narrow body of water separates the northernmost part of mainland North America from Somerset Island, one of the largest islands in the Canadian Arctic archipelago.

Bellot Strait is approximately 15 nautical miles long and just over half a mile wide at its narrowest point. Our ability to navigate this passage will be determined by ice and weather conditions.

DAY 13-20 Into the West

Spend eight days exploring the Western section of the fabled



 The Small Cruise  
Ship Collection  
[www.small-cruise-ships.com](http://www.small-cruise-ships.com)

[small-cruise-ships.com](http://small-cruise-ships.com)

[info@small-cruise-ships.com](mailto:info@small-cruise-ships.com)

## Northwest Passage

Over the next eight days in this section of our voyage we'll transit through three distinct regions - Nunavut, Northwest Territories, and Yukon - and two traditional Inuit Territories - Inuvialuit and Nunavut.

**\*\*During our time here, we anticipate up to five days of shore excursions and four transit days. Excursion stops and local highlights we hope to be able to visit include: \*\***

Gjoa Haven (Uqsuqtuuk)

Cambridge Bay (Iqaluktuuttiaq)

Coronation Gulf

Ulukhaktok

Smoking Hills

Herschel Island

DAY 21-24 Along the Alaskan coast

Science and wildlife watching at sea

Join your Expedition Team for insightful lectures as we journey through the Beaufort Sea and Bering Strait. As we head into the

Beaufort Sea, we must be aware that seasonal sea ice fluctuations can vary. If the sea ice levels are greater than the seasonal average this is likely to affect the speed we are able to sail through. This is the nature of expedition cruises, expect the unexpected!

**\*\*The highlights of this transit include: \*\***

The Beaufort Sea

The Bering Strait

The International Date Line

Wildlife watching

DAY 25 Final stop - there's no place like Nome

Learn about Alaska's 'golden' past

Prospectors first came to Nome in 1898, and people still hunt for gold here today. You'll see evidence of the Gold Rush era all around, including abandoned dredges, turn-of-the century steam engines and old railroad tracks, lending the town a unique and intriguing atmosphere.

You'll be in good company as you explore the town. Wyatt Earp, the famous sheriff, opened a saloon here. Nome was also the end point of three of Roald Amundsen's great polar expeditions.



From here you'll take a flight to Seattle for an overnight stay.

DAY 26 Scenic Seattle

End your adventure in the Emerald City

Waking up in your hotel in Seattle marks the end of your adventure through the Arctic labyrinth. After breakfast, and if you have time before your onward journey, why not explore the Emerald City and see what it has to offer.

Head to the Seattle Aquarium to see sea otters and a giant Pacific octopus. Or for incredible views of Puget Sound and the surrounding mountains, take a stroll through the nine-acre Olympic Sculpture Park, admiring the work of renowned artists as you go. And for a feast of the senses, visit the famous Pike Place Market. Operating for over a century, this lively farmer's market boasts everything from buskers and bars to salmon-throwing fishmongers!

Please Note:

Itineraries are subject to change.

# The Small Cruise Ship Collection

www.small-cruise-ships.com



small-cruise-ships.com

info@small-cruise-ships.com

## YOUR SHIP: FRIDTJOF NANSEN

**YOUR SHIP:** Fridtjof Nansen

**VESSEL TYPE:**

**LENGTH:**

**PASSENGER CAPACITY:**

**BUILT/REFURBISHED:**

Fridtjof Nansen is a small cruise ship specifically designed to be one of the most sustainable ships that can visit the Polar regions. Launched in 2020, The state of the art vessel features new and environmentally sustainable hybrid technology that will reduce fuel consumption and show the world that hybrid propulsion on large ships is possible. MS Fridtjof Nansen is the second of two hybrid ships to be launched cutting emissions by sailing with electrical propulsion. Hybrid technology, combined with the advanced construction of the hull and effective use of electricity on board will reduce fuel consumption and CO2-emissions on the ships by 20 percent. The future of shipping will be silent and emission free. MS Fridtjof Nansen will lead the way towards an even more sustainable way of traveling. Sailing on electrical power is not only a great benefit for the environment, but it will also enhance the impact of experiencing nature for the guests. The ship will be specially constructed for voyages in polar waters and serve as a comfortable basecamp at sea - bringing adventurers from all over the world to the most spectacular destinations in the most sustainable way. These ships combine state-of-the-art technology together with a premium onboard experience. All cabins are outside, half have

private balconies, and aft suites even boast private outdoor Jacuzzis, to soak up the stunning scenery in style. Facilities on board One of the most eye-catching exterior design features of the ships will be the two-level indoor/outdoor Observation Deck wrapped around the top of the ships' raked bow. In a vast area behind it, you'll find the core of the onboard experience: Amundsen Science Center. Packed with state of the art technology and high tech gadgets such as touch screens and science equipment, the immersive edutainment area will be the place guests and staff/crew meet, mingle and create a deeper understanding for the areas they explore. The flexible venue will feature lecture spaces, a small library, and speciality areas for workshops in photography, biology, and more. The stunning scenery will be reflected in a rich and comfortable interior design. Scandinavian materials from nature, such as granite, oak, birch and wool will be used to create relaxed and stylish cabins and public areas. All cabins are outside, 50 % will have private balconies, aft suites will feature private outdoor Jacuzzis with



The Small Cruise Ship Collection  
www.small-cruise-ships.com

01432 507 280 (within UK)

info@small-cruise-ships.com | small-cruise-ships.com



# The Small Cruise Ship Collection

[www.small-cruise-ships.com](http://www.small-cruise-ships.com)

[small-cruise-ships.com](http://small-cruise-ships.com)

[info@small-cruise-ships.com](mailto:info@small-cruise-ships.com)

spectacular views.



The Small Cruise Ship Collection

[www.small-cruise-ships.com](http://www.small-cruise-ships.com)

**01432 507 280** (within UK)

[info@small-cruise-ships.com](mailto:info@small-cruise-ships.com) | [small-cruise-ships.com](http://small-cruise-ships.com)





# The Small Cruise Ship Collection

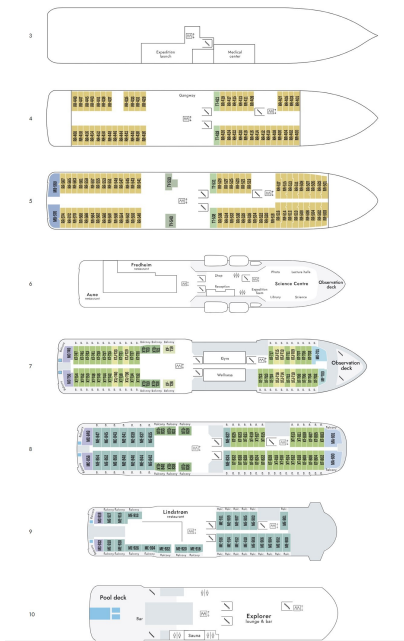
www.small-cruise-ships.com



small-cruise-ships.com

info@small-cruise-ships.com

## INSIDE YOUR SHIP



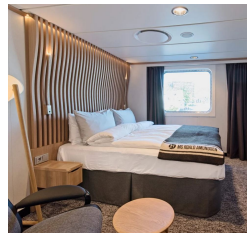
Arctic Superior. From



Expedition Suite. From



Polar Outside. From





# The Small Cruise Ship Collection

[www.small-cruise-ships.com](http://www.small-cruise-ships.com)



[small-cruise-ships.com](http://small-cruise-ships.com)

[info@small-cruise-ships.com](mailto:info@small-cruise-ships.com)

## PRICING

### 16-Aug-2025 to 10-Sep-2025

**Expedition Suite. From** £24401 GBP pp

**Polar Outside. From** £17383 GBP pp

**Arctic Superior. From** £19025 GBP pp

### 14-Aug-2026 to 08-Sep-2026

**Arctic Superior. From** £22719 GBP pp

**Expedition Suite. From** £28329 GBP pp

**Polar Outside. From** £20729 GBP pp