



The Small Cruise Ship Collection

www.small-cruise-ships.com

small-cruise-ships.com

info@small-cruise-ships.com

OCEAN VOYAGE: FORT DE FRANCE - LAS PALMAS IN LUXURY

From sea to sea, or from continent to continent, PONANT welcomes you aboard its ships for a Sea Journey. A few times a year we invite sea lovers, dreamers, and keen observers of endless horizons to join our non-stop journeys, to enjoy the comfort of our ships for an extended period and share the daily lives of our crew.



ITINERARY

Day 1 FORT-DE-FRANCE

Located on the western coast of Martinique, Fort-de-France will amaze you by the splendour of its bay, a magnificent cut-out in the coastline, considered as one of the most beautiful in the world. At the harbour mouth, on its strip of land, fort Saint-Louis overlooks the capital city of Martinique. If you climb up to it, you can see some breath-taking views. Saint Louis Cathedral and the Schoelcher library bear witness to a secular history,

The Small Cruise Ship Collection

www.small-cruise-ships.com

01432 507 280 (within UK)

info@small-cruise-ships.com | small-cruise-ships.com



The Small Cruise Ship Collection

www.small-cruise-ships.com

small-cruise-ships.com

info@small-cruise-ships.com

intimately linked to the island's story. Why not try some fresh coconut at the colourful Grand Marche. Two really pleasant places you can take a breather in, right in the heart of the city, are the garden of Balata and the Aime Cesaire park.

Days 2 - 10 AT SEA

During your journey at sea, make the most of the many services and activities on board. Treat yourself to a moment of relaxation in the spa or stay in shape in the fitness centre. Depending on the season, let yourself be tempted by the swimming pool or a spot of sunbathing. This journey without a port of call will also be an opportunity to enjoy the conferences or shows proposed on board, depending on the activities offered, or to do some shopping in the boutique or to meet the PONANT photographers in their dedicated space. As for lovers of the open sea, they will be able to visit the ship's upper deck to admire the spectacle of the waves and perhaps be lucky enough to observe marine species. A truly enchanted interlude, combining comfort, rest and entertainment.

Day 11 LAS PALMAS DE GRAN CANARIA, CANARY ISLANDS

A stopover of sunny climes, Las Palmas is located on the north-east coast of Gran Canaria. A few streets away from Puerto de la Luz port, you'll discover the vast Las Canteras beach, bordered with the town's characteristic palms. You'll find

these palms are all over Las Palmas, in the streets and squares, especially on the plaza de Santa Ana in the heart of the historical district. It feels like you've travelled back in time here, as you stand looking at the tall houses beside the Santa Ana cathedral. Very close by, you can visit the Casa de Colon, a museum dedicated to the famous explorer. The museum is housed in the palace belonging to the island's former governor. Chances are, you'll be drawn to the covered Vegueta market to partake in some daily life along with the locals and taste some unfamiliar dishes.

Please note:

Itineraries are subject to change.

The Small Cruise Ship Collection

www.small-cruise-ships.com

01432 507 280 (within UK)

info@small-cruise-ships.com | small-cruise-ships.com



The Small Cruise Ship Collection

www.small-cruise-ships.com

small-cruise-ships.com

info@small-cruise-ships.com

YOUR SHIP: LE BELLOT

YOUR SHIP: Le Bellot

VESSEL TYPE:

LENGTH:

PASSENGER CAPACITY:

BUILT/REFURBISHED:

Featuring innovative and environmentally-friendly equipment, elegantly designed staterooms, spacious suites with large windows, and lounge areas that open onto the outside, this new limited-capacity yacht boasting just 92 staterooms and suites will offer you a truly unique cruising experience. As the first ship in a new series, Le Bellot will embody the unique atmosphere of a subtle blend of exploration, refinement, intimacy and comfort. Aboard this ship that flies the French flag, you will experience the incomparable pleasure of an intimate cruise, with the possibility of exploring an ever-increasing range of destinations in an ethnic-chic ambiance with luxury service. Experience a luxurious setting where the accent is on authenticity and passion for travel. **RESTAURANTS** As it is an essential part of French culture, gastronomy will naturally have pride of place aboard this new ship. To the back of Deck 4, you will find a 260 m² panoramic restaurant which can accommodate all of our passengers in a single sitting. Designed differently to that on our other ships, this dining area, which opens onto the outside, will have a buffet of salads, desserts and cheeses at your disposal. Our discreet and attentive crew will provide table service for hot meals. In a relaxed atmosphere, an outdoor grill on Deck 3 will

serve grilled meats with a variety of salads and desserts. **PUBLIC AREAS** Le Bellot has many common areas that are designed and equipped to meet all of your needs while preserving the intimacy of each passenger. A 140 m² reception area includes: A reception/concierge desk, An excursions desk, The ship's administrative services, The sales office, manned by our Guest Relations Officer, Our 50 m² boutique which sells clothing, jewellery, beauty products, postcards and various accessories, Toilets accessible to passengers with reduced mobility. A new hydraulic platform with adjustable height provides: Easier boarding than on any other cruise ship, Easier Zodiac embarkation and disembarkation for expeditions, Easier access to the sea for swimming and practising various water sports such as kayaking or paddle-boarding. A pool deck offering: A pool with a panoramic view, equipped with a counter-current swimming system, A pleasant solarium, An outdoor bar and lounge with armchairs and sofas. A 200 m² main lounge which can accommodate all of our passengers to share convivial moments and to host activities organised during the day or evening. Lastly, a theatre that seats 188, equipped with: The latest sound and lighting technology, A LED wall as the stage backdrop, for the projection of high-resolution images and videos. Please click the following links to read more about Ponant and the other Ponant

The Small Cruise Ship Collection
www.small-cruise-ships.com

01432 507 280 (within UK)

info@small-cruise-ships.com | small-cruise-ships.com



The Small Cruise Ship Collection

www.small-cruise-ships.com

small-cruise-ships.com

info@small-cruise-ships.com



cruise ships.

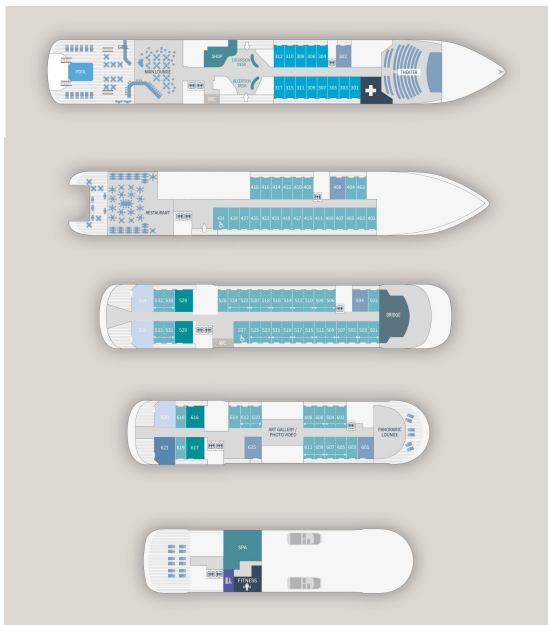
The Small Cruise Ship Collection

www.small-cruise-ships.com

small-cruise-ships.com

info@small-cruise-ships.com

INSIDE YOUR SHIP



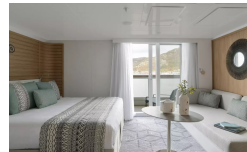
Deluxe Stateroom



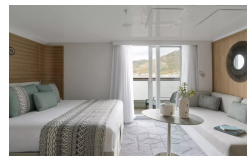
Deluxe Suite



Deluxe Suite Deck 3



Deluxe Suite Deck 4



Deluxe Suite Deck 5

Deluxe Suite Deck 6

Grand Deluxe Suite

Grand Deluxe Suite Deck 5

Grand Deluxe Suite Deck 6

Owner's Suite

Prestige Deck 4

Prestige Deck 5

Prestige Deck 5 Suite

Prestige Deck 6

Prestige Deck 6 Suite

Prestige Stateroom Deck 4

Prestige Stateroom Deck 5

Prestige Stateroom Deck 6

Prestige Suite Deck 5

Prestige Suite Deck 6



The Small Cruise Ship Collection

www.small-cruise-ships.com

small-cruise-ships.com

info@small-cruise-ships.com

Privilege Suite

Privilege Suite Deck 5



The Small Cruise Ship Collection

www.small-cruise-ships.com

01432 507 280 (within UK)

info@small-cruise-ships.com | small-cruise-ships.com

The Small Cruise Ship Collection

www.small-cruise-ships.com

small-cruise-ships.com

info@small-cruise-ships.com

PRICING

27-Mar-2025 to 06-Apr-2025

| | |
|---------------------------|--------------|
| Deluxe Suite | £3555 GBP pp |
| Prestige Stateroom Deck 4 | £2485 GBP pp |
| Grand Deluxe Suite | £4165 GBP pp |
| Privilege Suite | £4039 GBP pp |
| Prestige Stateroom Deck 5 | £2555 GBP pp |
| Owner's Suite | £4886 GBP pp |
| Prestige Suite Deck 5 | £3825 GBP pp |
| Prestige Stateroom Deck 6 | £2655 GBP pp |
| Prestige Suite Deck 6 | £3945 GBP pp |
| Deluxe Stateroom | £2359 GBP pp |

16-Mar-2026 to 26-Mar-2026

| | |
|---------------------------|--------------|
| Grand Deluxe Suite | £4005 GBP pp |
| Prestige Suite Deck 5 | £3685 GBP pp |
| Prestige Stateroom Deck 6 | £2565 GBP pp |
| Deluxe Stateroom | £2285 GBP pp |
| Prestige Suite Deck 6 | £3795 GBP pp |
| Prestige Stateroom Deck 5 | £2469 GBP pp |
| Owner's Suite | £4995 GBP pp |
| Privilege Suite | £3889 GBP pp |
| Deluxe Suite | £3425 GBP pp |
| Prestige Stateroom Deck 4 | £2399 GBP pp |

06-Apr-2026 to 16-Apr-2026

| | |
|---------------------------|--------------|
| Deluxe Suite Deck 5 | £3629 GBP pp |
| Privilege Suite Deck 6 | £4125 GBP pp |
| Grand Deluxe Suite Deck 5 | £4249 GBP pp |
| Prestige Deck 5 | £2609 GBP pp |
| Grand Deluxe Suite Deck 6 | £4249 GBP pp |
| Prestige Deck 5 Suite | £3905 GBP pp |
| Prestige Deck 6 | £2705 GBP pp |
| Deluxe Suite Deck 6 | £3629 GBP pp |
| Deluxe Suite Deck 4 | £3629 GBP pp |
| Prestige Deck 4 | £2535 GBP pp |
| Privilege Suite Deck 5 | £4125 GBP pp |
| Deluxe Stateroom | £2409 GBP pp |
| Deluxe Suite Deck 3 | £3629 GBP pp |
| Prestige Deck 6 Suite | £4025 GBP pp |

ADDITIONAL CHARGES:

Port Taxes 740 AUD pp