



The Small Cruise Ship Collection

www.small-cruise-ships.com



small-cruise-ships.com

info@small-cruise-ships.com

POINTE--PITRE TO POINTE--PITRE 9 DAY CARIBBEAN SAILING CRUISE

Embark on an unforgettable 9-day sailing Caribbean cruise, immersing yourself in the beauty and charm of the region. Experience the thrill of a day beneath full sails, as you embrace the freedom and serenity of sailing the open seas. Explore the captivating town of Soufriere in St Lucia, with its stunning landscapes and vibrant culture. Discover the allure of St George's in Grenada, where you can immerse yourself in the local flavors and traditions. Relax in the picturesque Chatham Bay on Union Island, surrounded by pristine beaches and crystal-clear waters. Enjoy another day beneath full sails, feeling the wind in your hair and the excitement of the open sea. Explore the enchanting Terre-de-Haut in the Îles des Saintes, known for its stunning beaches and charming village atmosphere. Visit Cabrits in Dominica, where lush tropical landscapes and vibrant marine life await. Finally, conclude your journey in Pointe-a-Pitre, Guadeloupe, where you can immerse yourself in the vibrant culture and explore the local markets. This sailing cruise promises a perfect blend of adventure, relaxation, and cultural immersion, creating memories to last a lifetime.



ITINERARY

DAY 1, Pointe-à-Pitre/Guadeloupe

Departure 10.00 pm

DAY 2, Day beneath full sails

Climbing the rigging, untying ropes, setting sails - today is all



The Small Cruise Ship Collection

www.small-cruise-ships.com

01432 507 280 (within UK)

info@small-cruise-ships.com | small-cruise-ships.com



about sailing. Time to lean back and relax in the deck chair and watch the passionate crew hoisting the sails by hand.

DAY 3, Soufrière/St Lucia

Arrival 08.00 am, Departure 05.00 pm Two famous volcanic cones are indisputably the emblem of St Lucia and have been designated as UNESCO World Heritage Sites. Gros and Petit Piton tower over the southern, windward side of the island and, in Soufriere, seem close enough to touch. The volcanoes have in fact long been extinct, but the sulphur springs demonstrate the power of the earth's core and still bubble up. In the Botanical Gardens, natural abundance is combined with artistic arrangements to create a colorful tropical paradise. Some people claim that Josephine, who later became Napoleon's wife, used to bathe in the little pool in the garden.

DAY 4, St George's/Grenada

Arrival 01.30 pm, Departure 11.00 pm Beautiful beaches, aromatic spice plantations, dense rainforests, waterfalls and a volcano that has long been extinct, picturesquely towering over this stunningly beautiful island. For many people, Grenada is the incarnation of a tropical paradise and St George's the most beautiful little port in the Grenadines. All around the horseshoe-shaped bay there are numerous houses that remind you of colonial times. There is good reason why nutmeg is immortalised on the national flag. Alongside cloves, cinnamon and ginger, it is one of the island's biggest exports.

DAY 5, Chatham Bay/Union Island

Arrival 08.00 am, Departure 06.00 pm Right in the south of the Grenadines are Union Island and the Tobago Cays. Union Island was given the evocative name "the Tahiti of the West Indies" thanks to its volcanic silhouette. Four small uninhabited islands, surrounded by a protective horseshoe-shaped coral reef, form the Tobago Cays. The Horseshoe Reef holds the Atlantic swell at bay and its unique animal and plant life make it an ideal place for snorkelling. The lagoon between the islets shimmers in all shades from turquoise through to emerald green and invites you to take a dip at the fantastic beaches.

DAY 6, Day beneath full sails

Just enjoy the perfect sailing conditions with fitness, cosmetics, massage or with a good book in a deck chair.

DAY 7, Terre-de-Haut/Îles des Saintes

Arrival 08.00 am, Departure 06.00 pm Îles des Saintes is a small archipelago which was disputed for a long time until it finally became French in 1816. In the charming main town of Terre-de-Haut, you can take a delightful stroll along the waterside promenade. Boutiques, cafes, bars and restaurants invite you to browse and spend some time here. The 'savoir vivre' takes place against a backdrop lit up in all the pastel shades of the Caribbean. Fort Napoleon is set high above the bay and your climb up to it is rewarded by a spectacular panoramic view. On the other side of the island, the Plage de Pompierre invites you to enjoy a dip in the sea and sunbathe on



the beach.

DAY 8, Cabrits/Dominica

Arrival 08.00 am, Departure 01.30 pm Dominica, nicknamed the "Nature Isle" of the Caribbean, is one of the most untouched of the Windward Islands. It boasts some of the highest mountains in the Lesser Antilles, as well as many beautiful national parks. Its interior is characterised by thick virgin forest, where rivers plunge into the depths and tiny streams wind through the jungle. Two extinct volcanoes are at the center of the Cabrits National Park and, recaptured by nature, the former strategically important Fort Stanley appears like a picturesque backdrop in the heart of the jungle.

DAY 9, Pointe-à-Pitre/Guadeloupe

Arrival 08.00 am

Please Note:

Itineraries are subject to change.



The Small Cruise Ship Collection

www.small-cruise-ships.com



small-cruise-ships.com

info@small-cruise-ships.com

YOUR SHIP: SEA CLOUD II

YOUR SHIP:	Sea Cloud II
VESSEL TYPE:	Tall Ship (Sailing)
LENGTH:	105 metres
PASSENGER CAPACITY:	96
BUILT/REFURBISHED:	2001

Launched in 2001, Sea Cloud II is a stunning vessel, built along traditional lines, but offering deluxe accommodation. She combines timeless elegance of sailing ships of the past with the highest safety standards and the luxurious comfort of modern cruise ships. Just like her legendary sister ship Sea Cloud, the 29,600 square feet of sails is set by hand which is a truly magical sight. Built to accommodate 96 passengers in five star luxury, she offers a range of beautifully appointed suites and cabins which are furnished with great style. All accommodations have outside views and the bathrooms, in light marble, are unusually spacious and extremely comfortable. The finest, carefully chosen fabrics, combined with leather, rattan and other materials, brass and gold, precious woods and marble together create an impressive ensemble. No expense has been spared to create a sympathetic ambience in both the accommodations and public areas and this is reflected throughout the vessel. Public areas include an elegant lounge, library, fitness centre, boutique, lido bar and hospital. The single sitting dining room is airy and modern and the quality of the cuisine and service will be to the highest of standards, as one would expect on a Sea Cloud cruise. Relax on the Lido deck and experience the natural

grandeur of travelling under sail, rekindling memories of a



bygone age.



The Small Cruise Ship Collection

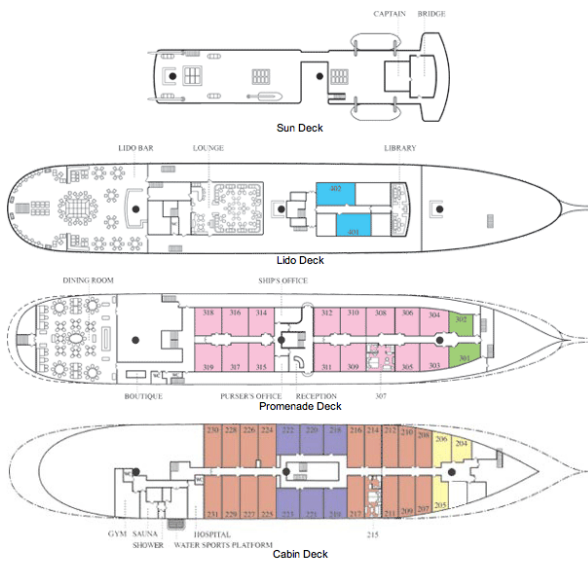
www.small-cruise-ships.com



small-cruise-ships.com

info@small-cruise-ships.com

INSIDE YOUR SHIP



Please note that category F cabins have one lower and one upper berth bed

Key

- Cat A (Blue)
- Cat B (Pink)
- Cat C (Green)
- Cat D (Purple)
- Cat E (Orange)
- Cat F (Yellow)

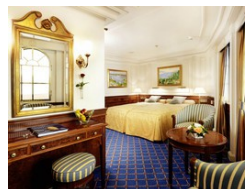
Category A. From



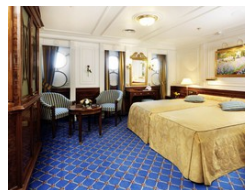
Category B. From



Category C. From



Category D. From



Category E. From

Category F Upper/Lower Beds. From



The Small Cruise
Ship Collection

www.small-cruise-ships.com

small-cruise-ships.com

info@small-cruise-ships.com

PRICING

12-Dec-2024 to 20-Dec-2024

GTY Double Cabin. From	£3003 GBP pp
Category F Upper/Lower Beds. From	£3263 GBP pp
Category E. From	£3898 GBP pp
Category D. From	£4357 GBP pp
Category C. From	£4640 GBP pp
Category B. From	£5581 GBP pp
Category A. From	£6216 GBP pp