

The Small Cruise Ship Collection

www.small-cruise-ships.com

small-cruise-ships.com

info@small-cruise-ships.com

POLAR CIRCLE QUEST ABOARD USHUAIA

Expedition cruise to the Antarctic Peninsula, South Shetland Islands, & endeavor to cross the Polar Circle. Aboard the USHUAIA



ITINERARY

Day 1: Depart from Ushuaia

Embark the USHUAIA in the afternoon and meet your expedition and lecture staff. After you have settled into your cabins we sail along the famous Beagle Channel and the scenic Mackinlay Pass.

Day 2 & 3: At Sea. Crossing the Drake Passage

Named after the renowned explorer, Sir Francis Drake, who sailed these waters in 1578, the Drake Passage also marks the

The Small Cruise Ship Collection

www.small-cruise-ships.com

01432 507 280 (within UK)

info@small-cruise-ships.com | small-cruise-ships.com



The Small Cruise Ship Collection

www.small-cruise-ships.com

small-cruise-ships.com

info@small-cruise-ships.com

Antarctic Convergence, a biological barrier where cold polar water sinks beneath the warmer northern waters. This creates a great upwelling of nutrients, which sustains the biodiversity of this region. The Drake Passage also marks the northern limit of many Antarctic seabirds. As we sail across the passage, Antarpoly Expeditions' lecturers will be out with you on deck to help with the identification of an amazing variety of seabirds, including many albatrosses, which follow in our wake. The USHUAIA's open bridge policy allows you to join our officers on the bridge and learn about navigation, watch for whales, and enjoy the view. A full program of lectures will be offered as well. The first sightings of icebergs and snow-capped mountains indicate that we have reached the South Shetland Islands, a group of twenty islands and islets first sighted in February 1819 by Capt. William Smith of the brig Williams. With favorable conditions in the Drake Passage our lecturers and naturalists will accompany you ashore as you experience your first encounter with the penguins and seals on Day 3.

Days 4 to 9: Exploring the Antarctic Peninsula, the South Shetland Islands, and endeavor to cross the Polar Circle

Exquisite beauty and pristine landscapes are waiting for you on the western side of the Antarctic Peninsula. Myriads of icebergs with different shades and shapes are floating free in the waterways around the continent. The Antarctic Peninsula's remarkable history will also provide you with a type of excitement often only associated with the early explorers. You will have plenty of time to explore its amazing scenery and a wide variety of wildlife. Apart from Adélie, Gentoo and Chinstrap Penguins and other seabirds you are likely to encounter Weddell, crabeater, fur and leopard seals as well as Minke whales and orcas at close range. At this time of year it is also very likely to encounter big cetaceans, such as humpback, Finn

and Sei whales in the area. We hope to navigate some of the most beautiful waterways the area has to offer, such as: the Gerlache Strait, Errera Channel, Neumayer Channel and the extremely narrow Lemaire Channel. Possible landing sites may include: Paradise Bay, which is perhaps the most aptly named place in the world with its impressive glacial fronts and mountains, Cuverville Island, home of the biggest Gentoo Penguin colony in the Peninsula surrounded by glaciers and castellated icebergs, and the British Museum and Post office Port Lockroy. As further exploration will lead us far South of the Lemaire Channel in quest of the Polar Circle, we might also visit the Ukrainian Station Vernadsky, the former British base Faradey, where the ozone hole was first spotted, the rugged Yalour Islands and south of the Polar Circle Detaille Island. On our way North we plan to explore the South Shetland Islands. The volcanic island group is a haven for wildlife. Vast penguin rookeries and seals hauling out on the shorelines make every day spent here unforgettable. Sailing through the narrow passage into the flooded caldera of Deception Island is truly amazing, so is visiting the crescent shaped island Half Moon, home to Chinstrap Penguins in breathtaking surroundings.

Days 10 & 11: At Sea. Crossing the Drake Passage, northbound

We leave Antarctica and head north across the Drake Passage. Join our lecturers and naturalists on deck as we search for seabirds and whales and enjoy some final lectures. Take the chance to relax and reflect on the fascinating adventures of the past days on the way back to Ushuaia.

Day 12: Arrival in Ushuaia

We arrive at the port of Ushuaia in the early morning and disembark the USHUAIA after breakfast.

The Small Cruise
Ship Collection

www.small-cruise-ships.com

01432 507 280 (within UK)

info@small-cruise-ships.com | small-cruise-ships.com



The Small Cruise
Ship Collection

www.small-cruise-ships.com

small-cruise-ships.com

info@small-cruise-ships.com

Please Note:

The above itinerary is a guide only. Our exact route and program will vary to take best advantage of local weather and ice conditions and opportunities to view wildlife. Changes will be made by the Captain and/or Expedition Leader to facilitate the best results from the prevailing conditions and they will try their best to reach the Polar Circle. However if ice conditions do not allow access the route might be changed. A daily program sheet will be issued on board. Flexibility is the key to success.

The Small Cruise Ship Collection

www.small-cruise-ships.com

small-cruise-ships.com

info@small-cruise-ships.com

YOUR SHIP: USHUAIA

YOUR SHIP: Ushuaia

VESSEL TYPE:

LENGTH:

PASSENGER CAPACITY:

BUILT/REFURBISHED:

Originally built for the United States agency NOAA (National Oceanic & Atmospheric Administration), the MV USHUAIA has been refurbished to accommodate a maximum of 84 passengers in 41 comfortable twin cabins and suites. The ice-strengthened polar vessel MV USHUAIA is very well appointed and provides ample deck space and an open bridge policy. The full complement of inflatable landing craft ensures superb landings and wildlife viewing opportunities on the otherwise inaccessible coastline. All cabins include ample storage space. Public areas feature a large dining room (one sitting), an observation lounge and bar, a conference room with modern multimedia equipment, a well-stocked library, a changing room and a small infirmary. Our expert captain, officers and crew are highly experienced in Antarctic navigation and have a great love of nature. We provide a specialist team of international expedition leaders and lecturers, all extremely knowledgeable, enthusiastic, helpful and dedicated to the protection of the environment. Our chefs prepare excellent cuisine including many local specialties and the bar is well-stocked with carefully selected wines and spirits.



The Small Cruise Ship Collection
www.small-cruise-ships.com

01432 507 280 (within UK)

info@small-cruise-ships.com | small-cruise-ships.com

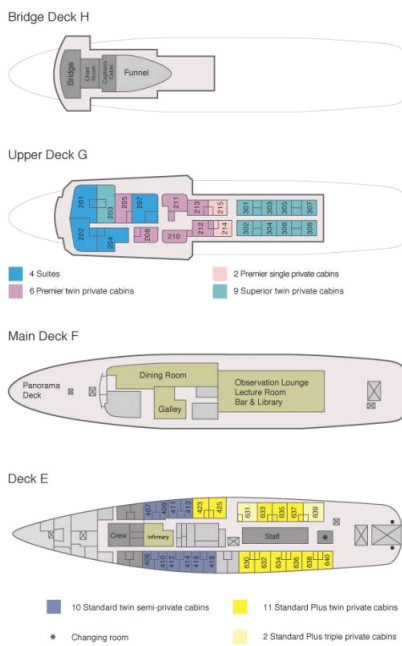
The Small Cruise Ship Collection

www.small-cruise-ships.com

small-cruise-ships.com

info@small-cruise-ships.com

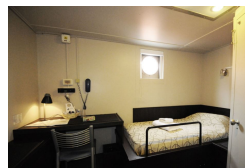
INSIDE YOUR SHIP



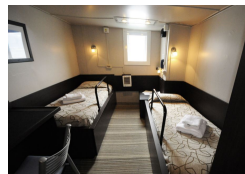
Premier Single



Premier Single ■



Premier Twin



Premier Twin ■



Standard Plus Triple

Standard Plus Triple ■

Standard Plus Twin

Standard Plus Twin ■

Standard Twin

Standard Twin ■

Suite Twin

Superior Twin



The Small Cruise Ship Collection

www.small-cruise-ships.com



small-cruise-ships.com

info@small-cruise-ships.com

PRICING

15-Feb-2025 to 26-Feb-2025

| | |
|----------------------|---------------|
| Standard Plus Triple | £7048 GBP pp |
| Premier Twin | £10896 GBP pp |
| Suite Twin | £12104 GBP pp |
| Standard Plus Twin | £9136 GBP pp |
| Superior Twin | £11512 GBP pp |
| Premier Single | £13080 GBP pp |
| Standard Twin | £7544 GBP pp |

14-Feb-2026 to 25-Feb-2026

| | |
|----------------------|---------------|
| Standard Plus Twin | £9432 GBP pp |
| Standard Plus Triple | £7192 GBP pp |
| Standard Twin | £7880 GBP pp |
| Premier Single | £13408 GBP pp |
| Suite Twin | £12792 GBP pp |
| Superior Twin | £11992 GBP pp |
| Premier Twin | £11184 GBP pp |



The Small Cruise Ship Collection

www.small-cruise-ships.com

01432 507 280 (within UK)

info@small-cruise-ships.com | small-cruise-ships.com