

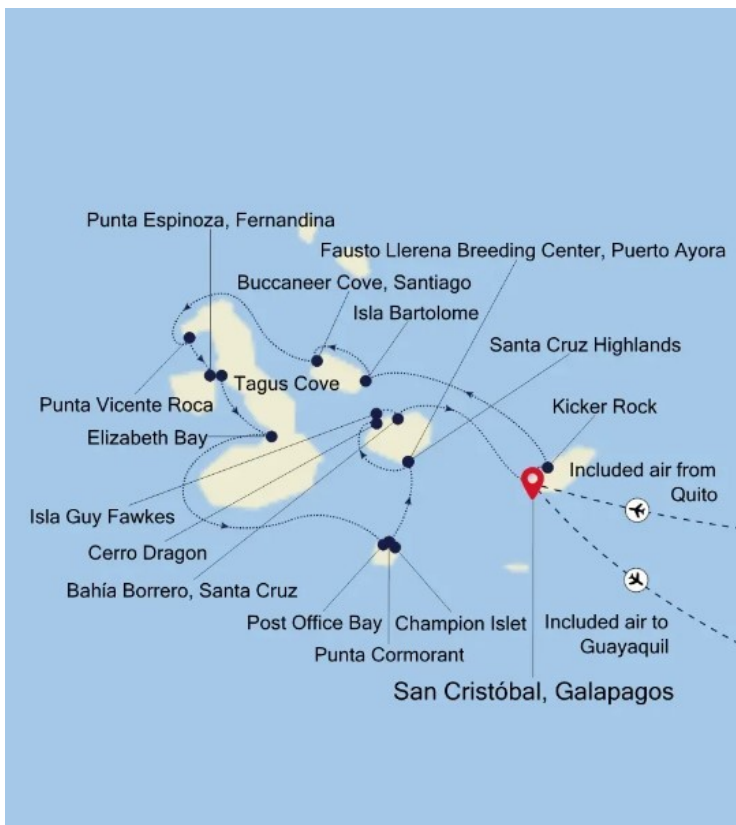


small-cruise-ships.com

info@small-cruise-ships.com

## SAN CRISTÓBAL, GALAPAGOS TO SAN CRISTÓBAL, GALAPAGOS ITINERARY II

Both inspirational and educational, the Galapagos islands are one of life's must dos. And how better to see this amazing archipelago than in this 10-day trip aboard the ultra-luxury Silver Origin? Never before have the islands been so superbly presented: a team of Ecuadorian national expert guides, the highest crew-to-guest ratio in the Galapagos, 8 Zodiacs, seamless hybrid spaces that offer an extraordinary voyage – for extraordinary people.



### ITINERARY

Day 1 San Cristóbal, Galapagos ECUADOR & Kicker Rock ECUADOR

Like so many of the islands in the Galapagos, San Cristobal is formed by dormant volcanoes. It lies to the east of the archipelago and is one of the oldest islands in the group. Approximately 8,000 people live on the island, making their living from tourism, fishing, in government offices, or off the rich volcanic soils with some limited farming existing in the

The Small Cruise Ship Collection

www.small-cruise-ships.com

01432 507 280 (within UK)

info@small-cruise-ships.com | small-cruise-ships.com



highlands. Puerto Baquerizo Moreno on the southwestern tip of the island is the capital city of the Galapagos Islands. A statue of Charles Darwin graces the harbor, marking one of the first places he likely stepped ashore in the 1830s. Kicker Rock is the vertical remnant of a former tuff cone less than 5 kilometers to the west of San Cristobal. Both its Spanish name “Leon Dormido” (Sleeping Lion) and English name Kicker Rock imply that it is one rock only -when in fact it is a larger one 300 meters long by 100 meters wide with a maximum height of approximately 150 meters and next to it an obelisk-like rock separated by a narrow channel some 20 meters deep. When approaching Kicker Rock, Blue-footed Boobies, Nazca Boobies and frigatebirds can be observed in the air, while sea lions can be seen along the shore. Snorkelers and divers have reported manta rays, hammerhead sharks and turtles. The Spanish name implies that the geological formation seen from the south resembles a sleeping lion. An interesting explanation for the English name suggests that James Colnett in 1794 likened it to famous landmarks in Portsmouth.

#### Day 2 Isla Bartolome ECUADOR & Buccaneer Cove, Santiago ECUADOR

Our ship anchors in sight of the volcanic moonscape of Isla Bartolomé, at Sullivan Bay. Zodiacs bring guests ashore to ascend a boardwalk of 388 steps. Passing through the arid volcanic landscape provides a chance to watch for lava lizards, Galapagos Hawks, and Blue-footed Boobies. However, the climber’s ultimate reward is one of the most beautiful panoramas in all of the Galapagos Islands – the view towards Pinnacle Rock with black, volcanic cones of Baltra, Daphne Major and Daphne Minor in the distance. On the way down watch how the sunlight catches the green of pioneering plant species in stark contrast against dark volcanic rock, and look

forward to time swimming and snorkeling from the golden beach. Buccaneer Cove is a colourful inlet on Santiago or James Island. It owes its name to some of the first visitors to the area: pirates. They came searching for water, tortoises, and some people say even places to hide their treasures. We don't know about any pirate's gold, but the area's landscape is a treasure. The geology combines some tuff red cones with impressive basalt lava dikes and sills. The erosion has carved caves and shaped some rocks into unique forms such as the Bishop's Rock. Palo Santo trees and some giant Prickly pear cactus cover the area, and at a distance, you can observe the impressive volcanos of Isabela Island. We will explore the area from our Zodiacs, searching for sea birds such as Nazca Boobies, Blue Footed Boobies, and Swallow-tailed Gulls. We can often find sea turtles and even reef sharks in this place. Also, in Buccaneer Cove, we can observe the two sea lions species: the Galapagos sea lion basking on the beaches and the fur seal looking for shade on the collapsed rocks along the coast.

#### Day 3 Punta Vicente Roca (Isabela) ECUADOR & Punta Espinoza, Fernandina ECUADOR

Punta Vicente Roca is one of the marine sites Isabela Island has to offer. On the southern side of Ecuador Volcano, the tip of land on the western end of Isabela is named after Vicente Ramon Roca, President of Ecuador from 1845-49, who as Prefect of Guayas had proposed the Ecuadorian annexation of the Galapagos Islands in 1831. The geological formations, the underwater caves and lava tubes offer fascinating views of the coastline. The South Equatorial Countercurrent hits this part of the archipelago from the west and the water offers abundant food sources for different marine life and seabirds. It is normal to see Pacific green turtles, but sharks, rays, whales and dolphins can also be expected, apart from a small colony of fur



## The Small Cruise Ship Collection

[www.small-cruise-ships.com](http://www.small-cruise-ships.com)

[small-cruise-ships.com](http://small-cruise-ships.com)

[info@small-cruise-ships.com](mailto:info@small-cruise-ships.com)

seals. Blue-footed Boobies, Nazca Boobies, Brown Noddies and other seabirds nest in the cliffs and both the endemic Galapagos Penguins and Flightless Cormorants have established small colonies nearby. Marine iguanas also like this area because of the rich variety of seaweeds growing underwater along the western coast of Isabela. As a marine site, deepwater snorkeling is also possible at Punta Vicente Roca. With the gentle slopes of La Cumbre volcano in the distance, the low, lava-forged coast of Punta Espinoza on Fernandina Island is a spectacular sight. Hundreds of marine iguanas rest on the black rock of recent lava flows absorbing heat from the stone and defending their territories against one another. Galapagos sea lions and their pups also take shelter here, resting on the beach and playing in the shallow tide pools sprinkled along the coast. Walk past high sandy areas where marine iguanas lay their eggs and along low, shallow mangrove ponds ringed with bright red Sally Lightfoot crabs and Flightless Cormorants drying their stubby wings in the sunshine.

#### Day 4 Tagus Cove (Isabela) ECUADOR & Elizabeth Bay (Isabela) ECUADOR

Tagus Cove is bordered by a steep rocky coastline and has for centuries offered shelter for ships and yachts. The cove is named after the British frigate HMS Tagus visiting the Galapagos in 1814. Already by the 1830s other ships had their visits recorded by painting or scratching their name onto the rocks. On approach Galapagos Penguins and Flightless Cormorants –both birds mainly found on Isabela’s west coast and neighboring Fernandina- are often seen. From the landing a trail through an incense tree forest leads past Darwin Lake to a viewpoint on top of a spatter cone. During the hike several land birds including Medium Ground-Finches, Galapagos Hawks, Yellow Warblers as well as Large-billed Flycatchers are often present. Brown

Noddies and Blue-footed Boobies prefer the rocks along the shore. Elizabeth Bay is one of the marine sites on Isabela’s west coast. South of Alcedo Volcano and north of Sierra Negra, Elizabeth Bay is found at Isabela’s narrowest east-west extension where the lava flows of these two volcanoes have connected each other. Elizabeth Bay’s shores show mangroves and specifically the easternmost part, a cove which can only be entered via a narrow channel, has red, white and black mangroves. Different animals prefer different parts of Elizabeth Bay. Las Marielas, three rocks at the entrance to the bay, are favored by Blue-footed Boobies, Flightless Cormorants and Galapagos Penguins as a resting place, while the mangrove area is preferred by Great Blue Herons for hunting or the Magnificent Frigatebirds for perching. The bay is used by turtles, rays and even sharks for feeding or resting. The shallow water and the root system of the mangroves in the small inlet allow smaller fish to hide from bigger predators.

#### Day 5 Post Office Bay (Floreana) ECUADOR & Champion Islet (Floreana) ECUADOR & Punta Cormorant (Floreana) ECUADOR

Floreana’s Post Office Bay has received its name as the site was used to leave mail for retrieval by others who were thought to stop at the Galapagos Islands or might be heading for the addressee’s direction. First mentioned by Porter in 1813 as “Hathaway’s Postoffice”, HMS Beagle’s captain FitzRoy stated that it was not in use in 1835 as the island was already settled at that time. Floreana had been the first island to be settled by Ecuadorians in 1832. Today a barrel instead of the original box is used by visitors who leave their own postcards and retrieve mail for hand-delivery. Apart from the beach and mail barrel the bay offers good swimming and snorkeling. The area holds remains of a failed Norwegian fish canning plant and settlement dating back to the 1920s. Although Floreana is inhabited, the

The Small Cruise Ship Collection

[www.small-cruise-ships.com](http://www.small-cruise-ships.com)

01432 507 280 (within UK)

[info@small-cruise-ships.com](mailto:info@small-cruise-ships.com) | [small-cruise-ships.com](http://small-cruise-ships.com)



## The Small Cruise Ship Collection

[www.small-cruise-ships.com](http://www.small-cruise-ships.com)

[small-cruise-ships.com](http://small-cruise-ships.com)

[info@small-cruise-ships.com](mailto:info@small-cruise-ships.com)

number of residents is reduced because of the difficult access to water. A track from Post Office Bay connects with the only road from Puerto Velazco Ibarra on the west coast to a spring in the highlands. Champion Islet is a small islet some 700 meters off the northeast coast of Floreana. It is one of four marine sites surrounding Floreana and offers excellent deepwater snorkeling opportunities. Curious sea lions approach the snorkelers while turtles slowly swim by and sharks, sting rays, and a high diversity of colorful fishes can usually be seen. During a Zodiac cruise around Champion Islet not only seabirds such as Nazca Boobies, Swallow-tailed Gulls, or Red-billed Tropicbirds will be seen, it is also possible to spot the rare Floreana Mockingbird. Floreana Island's northernmost point is called Punta Cormorant – named after the British naval vessel HMS Cormorant and dating back to the late 19th century. From the landing beach a short track leads to a shallow lagoon that is famous for its flamingos. The brilliantly pink birds skim the salty waters for shrimp and tend to chicks on the nest. The trail then scales a low hillside through scattered Palo Santo trees to reveal an idyllic white-sand beach on the other side of the point. Standing at the edge of the lapping waves, you might spot mammoth female sea turtles hauling themselves out of the sea to lay eggs in the sugar sand dunes that lay high above the tide line. Before returning to the landing site your guides may also point out White-cheeked Pintails, Blue-footed Boobies, Yellow Warblers, and Medium and Small Ground Finches.

Day 6 Santa Cruz Highlands ECUADOR & Fausto Llerena Breeding Center, Puerto Ayora (Santa Cruz) ECUADOR

Santa Cruz Island reaches a maximum altitude of 864 meters (2,835 ft) above sea level; at high altitudes, weather changes creating microclimates. The species of flora and fauna found near the shoreline are extremely different from those on the

highlands. Life in the highlands is much easier due to the presence of fresh water, from the constant drizzle that happens during the dry season to heavy rains that occur during the wet season. Local people take advantage of this climate to cultivate a large number of crops and giant tortoises love this ideal weather to mate, feed and rest before their next long migration to the shorelines. Silver Origin will anchor in front of Puerto Ayora, Santa Cruz, where the prestigious Charles Darwin Research Station is located. The station also houses the Fausto Llerena Breeding Center for giant tortoises and land iguanas where guides interpret the centre's captive breeding and reintroduction programs. In addition to these star species, throughout the station there are huge prickly pear cactus trees being fed upon by the pretty Galapagos Cactus Finch. To round out the stay in Puerto Ayora, enjoy free time in town where local artists have created charming art galleries and corner cafés.

Day 7 Cerro Dragon (Santa Cruz) ECUADOR & Isla Guy Fawkes ECUADOR & Bahía Borrero, Santa Cruz ECUADOR

A dry landing onto volcanic rock covered by Sally light-footed crabs will welcome you as you disembark for this walk discovering Cerro Dragon. Enjoy this visit that mixes a brackish water lagoon inhabited by shorebirds, some elusive pink flamingos and a volcanic rock cover dry enough to be the perfect ecosystem for the Galapagos land iguana. Search for this iconic Galapagos inhabitant that populates this area of Santa Cruz. Your guide will be on the lookout too, helping you to recognise them whether they are resting in their burrows or next to the cacti looking for food. Guy Fawkes is a group of four islets situated on the northwestern side of Santa Cruz Island. They are satellite cones, surrounded by deep waters. As they rise from the deep, they intercept with the strong sea currents making the area a place full of life. These small islets have beautiful

The Small Cruise Ship Collection

[www.small-cruise-ships.com](http://www.small-cruise-ships.com)

01432 507 280 (within UK)

[info@small-cruise-ships.com](mailto:info@small-cruise-ships.com) | [small-cruise-ships.com](http://small-cruise-ships.com)



The Small Cruise  
Ship Collection

www.small-cruise-ships.com

small-cruise-ships.com

info@small-cruise-ships.com

underwater cliffs covered with all sorts of marine invertebrates such as sponges, corals, sea stars, urchins – making it a very colourful place for deep water snorkelling. Due to the conditions mentioned above, it results in some immense aggregations of fish, and, due to the depth of the water, it is not unusual to find Sharks or Manta Rays. Guy Fawkes is one of the most exciting places to deep water snorkel. You never know what you will find. In the northern area of Santa Cruz Island, Bahía Borrero is a beautiful white coralline beach used as a nesting site by Green Sea turtles. Behind the dunes, we have a forest of typical vegetation from the arid zone: Palo Santo, Leather leaf, and Salty bushes. This vegetation welcomes Yellow Warblers, and some of the most characteristic species of Darwin Finches, such as the Common Cactus Finch or the Small Ground Finch. This extinct volcano, due to its altitude, shows all the different zones of vegetation, changing from the littoral to the arid, and then with more moisture into the humid zone, to end in the dry pampa zone. It is an impressive landscape to enjoy while you swim in the turquoise waters of the bay or have a nice relaxing walk along the beach.

Please Note:

The excursions are provided as a sample of what may be offered on this voyage and are subject to change.

Day 8 San Cristóbal, Galapagos ECUADOR

Like so many of the islands in the Galapagos, San Cristobal is formed by dormant volcanoes. It lies to the east of the archipelago and is one of the oldest islands in the group. Approximately 8,000 people live on the island, making their living from tourism, fishing, in government offices, or off the rich volcanic soils with some limited farming existing in the highlands. Puerto Baquerizo Moreno on the southwestern tip of the island is the capital city of the Galapagos Islands. A statue of Charles Darwin graces the harbor, marking one of the first places he likely stepped ashore in the 1830s.



01432 507 280 (within UK)

info@small-cruise-ships.com | small-cruise-ships.com



The Small Cruise  
Ship Collection

[www.small-cruise-ships.com](http://www.small-cruise-ships.com)



[small-cruise-ships.com](http://small-cruise-ships.com)

[info@small-cruise-ships.com](mailto:info@small-cruise-ships.com)

## YOUR SHIP: SILVER ORIGIN

**YOUR SHIP:** Silver Origin

**VESSEL TYPE:**

**LENGTH:**

**PASSENGER CAPACITY:**

**BUILT/REFURBISHED:**

The first destination specific vessel launched by Silversea, Silver Origin is the height of luxury experiential cruising in the Galapagos. The islands are superbly presented with the best people and views: a team of Ecuadorian national expert guides, the highest crew-to-guest ratio in the Galapagos, 8 Zodiacs, seamless viewing and relaxing spaces that offer an extraordinary voyage. All-suite accommodation, Horizon Balconies, butler service, sophisticated interiors, interactive basecamp, Ecuadorian inspired cuisine ... no aspect of Silver Origin has been left to chance. The most environmentally conscious ship Silversea have ever built, take a vertical leap and transform your idea of travel with Silver Origin.



The Small Cruise  
Ship Collection

[www.small-cruise-ships.com](http://www.small-cruise-ships.com)

01432 507 280 (within UK)

[info@small-cruise-ships.com](mailto:info@small-cruise-ships.com) | [small-cruise-ships.com](http://small-cruise-ships.com)



# The Small Cruise Ship Collection

www.small-cruise-ships.com

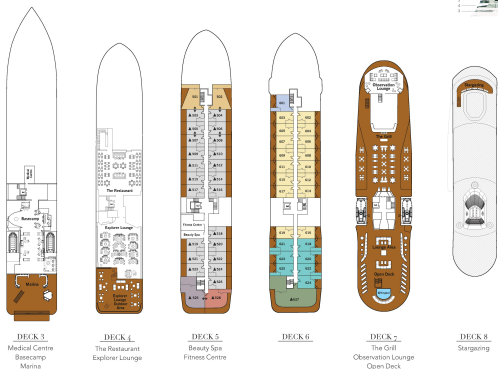


small-cruise-ships.com

info@small-cruise-ships.com

## INSIDE YOUR SHIP

SILVER ORIGIN – Deck Plans



CLASSIC VERANDA SUITE. From    DELUXE VERANDA SUITE. From



**SUITE CATEGORY**

- Owner's Suite
- Grand Suite
- Royal Suite
- Silver Suite
- Medallion Suite
- Deluxe Veranda Suite
- Superior Veranda Suite
- Classic Veranda Suite

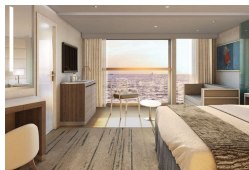
**SPECIFICATION**

- Cabin
- Crew
- Officers
- Guests
- Storage
- Length
- Width
- Speed
- Refrigerator
- Connecting Suites
- 3rd Quarter Capacity
- Bath
- Registry



GRAND SUITE. From

MEDALLION SUITE. From



OWNER'S SUITE. From  
SILVER SUITE. From

ROYAL SUITE. From  
SUPERIOR VERANDA SUITE. From



# The Small Cruise Ship Collection

www.small-cruise-ships.com



small-cruise-ships.com

info@small-cruise-ships.com

## PRICING

### 30-Nov-2024 to 07-Dec-2024

|                              |               |
|------------------------------|---------------|
| GRAND SUITE. From            | £21012 GBP pp |
| ROYAL SUITE. From            | £17340 GBP pp |
| DELUXE VERANDA SUITE. From   | £9537 GBP pp  |
| SUPERIOR VERANDA SUITE. From | £9129 GBP pp  |
| CLASSIC VERANDA SUITE. From  | £8415 GBP pp  |
| MEDALLION SUITE. From        | £11883 GBP pp |
| OWNER'S SUITE. From          | £25296 GBP pp |
| SILVER SUITE. From           | £14280 GBP pp |

### 14-Dec-2024 to 21-Dec-2024

|                              |               |
|------------------------------|---------------|
| GRAND SUITE. From            | £20604 GBP pp |
| SILVER SUITE. From           | £14025 GBP pp |
| MEDALLION SUITE. From        | £11679 GBP pp |
| SUPERIOR VERANDA SUITE. From | £9129 GBP pp  |
| DELUXE VERANDA SUITE. From   | £9537 GBP pp  |
| ROYAL SUITE. From            | £17034 GBP pp |
| OWNER'S SUITE. From          | £24837 GBP pp |
| CLASSIC VERANDA SUITE. From  | £8415 GBP pp  |

### 28-Dec-2024 to 04-Jan-2025

|                              |               |
|------------------------------|---------------|
| OWNER'S SUITE. From          | £35700 GBP pp |
| SUPERIOR VERANDA SUITE. From | £11934 GBP pp |
| CLASSIC VERANDA SUITE. From  | £10914 GBP pp |
| SILVER SUITE. From           | £19686 GBP pp |
| GRAND SUITE. From            | £29427 GBP pp |
| MEDALLION SUITE. From        | £16218 GBP pp |
| ROYAL SUITE. From            | £24174 GBP pp |
| DELUXE VERANDA SUITE. From   | £12444 GBP pp |

### 11-Jan-2025 to 18-Jan-2025

|                              |               |
|------------------------------|---------------|
| OWNER'S SUITE. From          | £30090 GBP pp |
| ROYAL SUITE. From            | £20451 GBP pp |
| MEDALLION SUITE. From        | £13872 GBP pp |
| SILVER SUITE. From           | £16779 GBP pp |
| SUPERIOR VERANDA SUITE. From | £10302 GBP pp |
| GRAND SUITE. From            | £24888 GBP pp |
| DELUXE VERANDA SUITE. From   | £10710 GBP pp |
| CLASSIC VERANDA SUITE. From  | £9435 GBP pp  |





# The Small Cruise Ship Collection

[www.small-cruise-ships.com](http://www.small-cruise-ships.com)



[small-cruise-ships.com](http://small-cruise-ships.com)

[info@small-cruise-ships.com](mailto:info@small-cruise-ships.com)

## PRICING

### 25-Jan-2025 to 01-Feb-2025

|                              |               |
|------------------------------|---------------|
| GRAND SUITE. From            | £24888 GBP pp |
| SILVER SUITE. From           | £16779 GBP pp |
| SUPERIOR VERANDA SUITE. From | £10302 GBP pp |
| DELUXE VERANDA SUITE. From   | £10710 GBP pp |
| CLASSIC VERANDA SUITE. From  | £9435 GBP pp  |
| OWNER'S SUITE. From          | £30090 GBP pp |
| MEDALLION SUITE. From        | £13872 GBP pp |
| ROYAL SUITE. From            | £20451 GBP pp |

### 08-Feb-2025 to 15-Feb-2025

|                              |               |
|------------------------------|---------------|
| GRAND SUITE. From            | £24378 GBP pp |
| SUPERIOR VERANDA SUITE. From | £10302 GBP pp |
| MEDALLION SUITE. From        | £13617 GBP pp |
| DELUXE VERANDA SUITE. From   | £10710 GBP pp |
| OWNER'S SUITE. From          | £29478 GBP pp |
| SILVER SUITE. From           | £16473 GBP pp |
| ROYAL SUITE. From            | £20094 GBP pp |
| CLASSIC VERANDA SUITE. From  | £9435 GBP pp  |

### 22-Feb-2025 to 01-Mar-2025

|                              |               |
|------------------------------|---------------|
| ROYAL SUITE. From            | £20094 GBP pp |
| MEDALLION SUITE. From        | £13617 GBP pp |
| SUPERIOR VERANDA SUITE. From | £10302 GBP pp |
| SILVER SUITE. From           | £16473 GBP pp |
| CLASSIC VERANDA SUITE. From  | £9435 GBP pp  |
| GRAND SUITE. From            | £24378 GBP pp |
| OWNER'S SUITE. From          | £29478 GBP pp |
| DELUXE VERANDA SUITE. From   | £10710 GBP pp |

### 08-Mar-2025 to 15-Mar-2025

|                              |               |
|------------------------------|---------------|
| ROYAL SUITE. From            | £21012 GBP pp |
| SILVER SUITE. From           | £17238 GBP pp |
| GRAND SUITE. From            | £25551 GBP pp |
| SUPERIOR VERANDA SUITE. From | £10710 GBP pp |
| CLASSIC VERANDA SUITE. From  | £9792 GBP pp  |
| DELUXE VERANDA SUITE. From   | £11118 GBP pp |
| MEDALLION SUITE. From        | £14229 GBP pp |
| OWNER'S SUITE. From          | £30957 GBP pp |



The Small Cruise Ship Collection

[www.small-cruise-ships.com](http://www.small-cruise-ships.com)

01432 507 280 (within UK)

[info@small-cruise-ships.com](mailto:info@small-cruise-ships.com) | [small-cruise-ships.com](http://small-cruise-ships.com)



# The Small Cruise Ship Collection

www.small-cruise-ships.com



small-cruise-ships.com

info@small-cruise-ships.com

## PRICING

### 22-Mar-2025 to 29-Mar-2025

|  |               |
|--|---------------|
| <b>SUPERIOR VERANDA SUITE.</b><br>From | £10710 GBP pp |
| <b>MEDALLION SUITE.</b> From           | £14229 GBP pp |
| <b>CLASSIC VERANDA SUITE.</b> From     | £9792 GBP pp  |
| <b>GRAND SUITE.</b> From               | £25551 GBP pp |
| <b>ROYAL SUITE.</b> From               | £21012 GBP pp |
| <b>DELUXE VERANDA SUITE.</b> From      | £11118 GBP pp |
| <b>SILVER SUITE.</b> From              | £17238 GBP pp |
| <b>OWNER'S SUITE.</b> From             | £30957 GBP pp |

### 05-Apr-2025 to 12-Apr-2025

|  |               |
|--|---------------|
| <b>DELUXE VERANDA SUITE.</b> From      | £13107 GBP pp |
| <b>OWNER'S SUITE.</b> From             | £39780 GBP pp |
| <b>SUPERIOR VERANDA SUITE.</b><br>From | £12597 GBP pp |
| <b>MEDALLION SUITE.</b> From           | £17901 GBP pp |
| <b>GRAND SUITE.</b> From               | £32742 GBP pp |
| <b>CLASSIC VERANDA SUITE.</b> From     | £11679 GBP pp |
| <b>SILVER SUITE.</b> From              | £21828 GBP pp |
| <b>ROYAL SUITE.</b> From               | £26826 GBP pp |

### 19-Apr-2025 to 26-Apr-2025

|  |               |
|--|---------------|
| <b>GRAND SUITE.</b> From               | £30243 GBP pp |
| <b>OWNER'S SUITE.</b> From             | £36720 GBP pp |
| <b>SUPERIOR VERANDA SUITE.</b><br>From | £12036 GBP pp |
| <b>SILVER SUITE.</b> From              | £20196 GBP pp |
| <b>DELUXE VERANDA SUITE.</b> From      | £12495 GBP pp |
| <b>ROYAL SUITE.</b> From               | £24786 GBP pp |
| <b>CLASSIC VERANDA SUITE.</b> From     | £11169 GBP pp |
| <b>MEDALLION SUITE.</b> From           | £16626 GBP pp |

### 03-May-2025 to 10-May-2025

|  |               |
|--|---------------|
| <b>SILVER SUITE.</b> From              | £20196 GBP pp |
| <b>MEDALLION SUITE.</b> From           | £16626 GBP pp |
| <b>CLASSIC VERANDA SUITE.</b> From     | £11169 GBP pp |
| <b>DELUXE VERANDA SUITE.</b> From      | £12495 GBP pp |
| <b>SUPERIOR VERANDA SUITE.</b><br>From | £12036 GBP pp |
| <b>GRAND SUITE.</b> From               | £30243 GBP pp |
| <b>OWNER'S SUITE.</b> From             | £36720 GBP pp |
| <b>ROYAL SUITE.</b> From               | £24786 GBP pp |



# The Small Cruise Ship Collection

www.small-cruise-ships.com



small-cruise-ships.com

info@small-cruise-ships.com

## PRICING

### 17-May-2025 to 24-May-2025

|                              |               |
|------------------------------|---------------|
| CLASSIC VERANDA SUITE. From  | £10863 GBP pp |
| DELUXE VERANDA SUITE. From   | £12138 GBP pp |
| OWNER'S SUITE. From          | £34884 GBP pp |
| GRAND SUITE. From            | £28764 GBP pp |
| SUPERIOR VERANDA SUITE. From | £11730 GBP pp |
| SILVER SUITE. From           | £19278 GBP pp |
| MEDALLION SUITE. From        | £15861 GBP pp |
| ROYAL SUITE. From            | £23613 GBP pp |

### 31-May-2025 to 07-Jun-2025

|                              |               |
|------------------------------|---------------|
| SUPERIOR VERANDA SUITE. From | £11424 GBP pp |
| DELUXE VERANDA SUITE. From   | £11883 GBP pp |
| SILVER SUITE. From           | £18513 GBP pp |
| ROYAL SUITE. From            | £22644 GBP pp |
| CLASSIC VERANDA SUITE. From  | £10608 GBP pp |
| GRAND SUITE. From            | £27591 GBP pp |
| OWNER'S SUITE. From          | £33405 GBP pp |
| MEDALLION SUITE. From        | £15249 GBP pp |

### 14-Jun-2025 to 21-Jun-2025

|                              |               |
|------------------------------|---------------|
| DELUXE VERANDA SUITE. From   | £11730 GBP pp |
| GRAND SUITE. From            | £27387 GBP pp |
| SILVER SUITE. From           | £18360 GBP pp |
| SUPERIOR VERANDA SUITE. From | £11322 GBP pp |
| CLASSIC VERANDA SUITE. From  | £10506 GBP pp |
| OWNER'S SUITE. From          | £33150 GBP pp |
| ROYAL SUITE. From            | £22491 GBP pp |
| MEDALLION SUITE. From        | £15147 GBP pp |

### 28-Jun-2025 to 05-Jul-2025

|                              |               |
|------------------------------|---------------|
| GRAND SUITE. From            | £27387 GBP pp |
| SILVER SUITE. From           | £18360 GBP pp |
| OWNER'S SUITE. From          | £33150 GBP pp |
| DELUXE VERANDA SUITE. From   | £11730 GBP pp |
| ROYAL SUITE. From            | £22491 GBP pp |
| CLASSIC VERANDA SUITE. From  | £10506 GBP pp |
| MEDALLION SUITE. From        | £15147 GBP pp |
| SUPERIOR VERANDA SUITE. From | £11322 GBP pp |



www.small-cruise-ships.com

01432 507 280 (within UK)

info@small-cruise-ships.com | small-cruise-ships.com



# The Small Cruise Ship Collection

www.small-cruise-ships.com



small-cruise-ships.com

info@small-cruise-ships.com

## PRICING

### 12-Jul-2025 to 19-Jul-2025

|                              |               |
|------------------------------|---------------|
| CLASSIC VERANDA SUITE. From  | £9792 GBP pp  |
| SUPERIOR VERANDA SUITE. From | £10557 GBP pp |
| ROYAL SUITE. From            | £21216 GBP pp |
| DELUXE VERANDA SUITE. From   | £10914 GBP pp |
| SILVER SUITE. From           | £17340 GBP pp |
| GRAND SUITE. From            | £25806 GBP pp |
| OWNER'S SUITE. From          | £31212 GBP pp |
| MEDALLION SUITE. From        | £14331 GBP pp |

### 26-Jul-2025 to 02-Aug-2025

|                              |               |
|------------------------------|---------------|
| OWNER'S SUITE. From          | £30090 GBP pp |
| CLASSIC VERANDA SUITE. From  | £9639 GBP pp  |
| DELUXE VERANDA SUITE. From   | £10761 GBP pp |
| SUPERIOR VERANDA SUITE. From | £10353 GBP pp |
| GRAND SUITE. From            | £24888 GBP pp |
| SILVER SUITE. From           | £16779 GBP pp |
| ROYAL SUITE. From            | £20502 GBP pp |
| MEDALLION SUITE. From        | £13872 GBP pp |

### 09-Aug-2025 to 16-Aug-2025

|                              |               |
|------------------------------|---------------|
| OWNER'S SUITE. From          | £29478 GBP pp |
| DELUXE VERANDA SUITE. From   | £10557 GBP pp |
| ROYAL SUITE. From            | £20094 GBP pp |
| CLASSIC VERANDA SUITE. From  | £9486 GBP pp  |
| GRAND SUITE. From            | £24378 GBP pp |
| SUPERIOR VERANDA SUITE. From | £10200 GBP pp |
| SILVER SUITE. From           | £16473 GBP pp |
| MEDALLION SUITE. From        | £13617 GBP pp |

### 23-Aug-2025 to 30-Aug-2025

|                              |               |
|------------------------------|---------------|
| OWNER'S SUITE. From          | £29019 GBP pp |
| GRAND SUITE. From            | £24021 GBP pp |
| MEDALLION SUITE. From        | £13413 GBP pp |
| SILVER SUITE. From           | £16218 GBP pp |
| DELUXE VERANDA SUITE. From   | £10353 GBP pp |
| CLASSIC VERANDA SUITE. From  | £9282 GBP pp  |
| ROYAL SUITE. From            | £19788 GBP pp |
| SUPERIOR VERANDA SUITE. From | £9996 GBP pp  |



# The Small Cruise Ship Collection

www.small-cruise-ships.com



small-cruise-ships.com

info@small-cruise-ships.com

## PRICING

### 06-Sep-2025 to 13-Sep-2025

|                              |               |
|------------------------------|---------------|
| CLASSIC VERANDA SUITE. From  | £9486 GBP pp  |
| GRAND SUITE. From            | £24378 GBP pp |
| ROYAL SUITE. From            | £20094 GBP pp |
| MEDALLION SUITE. From        | £13617 GBP pp |
| OWNER'S SUITE. From          | £29478 GBP pp |
| DELUXE VERANDA SUITE. From   | £10557 GBP pp |
| SUPERIOR VERANDA SUITE. From | £10200 GBP pp |
| SILVER SUITE. From           | £16473 GBP pp |

### 20-Sep-2025 to 27-Sep-2025

|                              |               |
|------------------------------|---------------|
| MEDALLION SUITE. From        | £13872 GBP pp |
| SILVER SUITE. From           | £16779 GBP pp |
| OWNER'S SUITE. From          | £30090 GBP pp |
| SUPERIOR VERANDA SUITE. From | £10353 GBP pp |
| DELUXE VERANDA SUITE. From   | £10761 GBP pp |
| CLASSIC VERANDA SUITE. From  | £9639 GBP pp  |

### 17-Oct-2025 to 26-Oct-2025

|                              |               |
|------------------------------|---------------|
| ROYAL SUITE. From            | £21216 GBP pp |
| DELUXE VERANDA SUITE. From   | £10914 GBP pp |
| OWNER'S SUITE. From          | £31212 GBP pp |
| GRAND SUITE. From            | £25806 GBP pp |
| MEDALLION SUITE. From        | £14331 GBP pp |
| SILVER SUITE. From           | £17340 GBP pp |
| CLASSIC VERANDA SUITE. From  | £9792 GBP pp  |
| SUPERIOR VERANDA SUITE. From | £10557 GBP pp |

### 31-Oct-2025 to 09-Nov-2025

|                              |               |
|------------------------------|---------------|
| SILVER SUITE. From           | £17340 GBP pp |
| CLASSIC VERANDA SUITE. From  | £9792 GBP pp  |
| MEDALLION SUITE. From        | £14331 GBP pp |
| OWNER'S SUITE. From          | £31212 GBP pp |
| SUPERIOR VERANDA SUITE. From | £10557 GBP pp |
| ROYAL SUITE. From            | £21216 GBP pp |
| DELUXE VERANDA SUITE. From   | £10914 GBP pp |
| GRAND SUITE. From            | £25806 GBP pp |



# The Small Cruise Ship Collection

[www.small-cruise-ships.com](http://www.small-cruise-ships.com)



[small-cruise-ships.com](http://small-cruise-ships.com)

[info@small-cruise-ships.com](mailto:info@small-cruise-ships.com)

## PRICING

### 14-Nov-2025 to 23-Nov-2025

|                              |               |
|------------------------------|---------------|
| CLASSIC VERANDA SUITE. From  | £9894 GBP pp  |
| GRAND SUITE. From            | £26010 GBP pp |
| OWNER'S SUITE. From          | £31467 GBP pp |
| DELUXE VERANDA SUITE. From   | £11016 GBP pp |
| ROYAL SUITE. From            | £21369 GBP pp |
| SILVER SUITE. From           | £17493 GBP pp |
| MEDALLION SUITE. From        | £14433 GBP pp |
| SUPERIOR VERANDA SUITE. From | £10659 GBP pp |

### 28-Nov-2025 to 07-Dec-2025

|                              |               |
|------------------------------|---------------|
| SUPERIOR VERANDA SUITE. From | £10659 GBP pp |
| SILVER SUITE. From           | £17493 GBP pp |
| ROYAL SUITE. From            | £21369 GBP pp |
| OWNER'S SUITE. From          | £31467 GBP pp |
| GRAND SUITE. From            | £26010 GBP pp |
| CLASSIC VERANDA SUITE. From  | £9894 GBP pp  |
| DELUXE VERANDA SUITE. From   | £11016 GBP pp |
| MEDALLION SUITE. From        | £14433 GBP pp |

### 12-Dec-2025 to 21-Dec-2025

|                              |               |
|------------------------------|---------------|
| OWNER'S SUITE. From          | £31824 GBP pp |
| SILVER SUITE. From           | £17646 GBP pp |
| DELUXE VERANDA SUITE. From   | £11118 GBP pp |
| ROYAL SUITE. From            | £21624 GBP pp |
| GRAND SUITE. From            | £26265 GBP pp |
| SUPERIOR VERANDA SUITE. From | £10710 GBP pp |
| CLASSIC VERANDA SUITE. From  | £9945 GBP pp  |
| MEDALLION SUITE. From        | £14586 GBP pp |

### 26-Dec-2025 to 04-Jan-2026

|                              |               |
|------------------------------|---------------|
| CLASSIC VERANDA SUITE. From  | £11475 GBP pp |
| ROYAL SUITE. From            | £25755 GBP pp |
| SILVER SUITE. From           | £20961 GBP pp |
| SUPERIOR VERANDA SUITE. From | £12393 GBP pp |
| MEDALLION SUITE. From        | £17238 GBP pp |
| DELUXE VERANDA SUITE. From   | £12852 GBP pp |
| OWNER'S SUITE. From          | £38199 GBP pp |
| GRAND SUITE. From            | £31467 GBP pp |



# The Small Cruise Ship Collection

www.small-cruise-ships.com



small-cruise-ships.com

info@small-cruise-ships.com

## PRICING

### 09-Jan-2026 to 18-Jan-2026

|                              |               |
|------------------------------|---------------|
| GRAND SUITE. From            | £28968 GBP pp |
| ROYAL SUITE. From            | £23766 GBP pp |
| CLASSIC VERANDA SUITE. From  | £10965 GBP pp |
| MEDALLION SUITE. From        | £15963 GBP pp |
| SILVER SUITE. From           | £19380 GBP pp |
| DELUXE VERANDA SUITE. From   | £12291 GBP pp |
| OWNER'S SUITE. From          | £35139 GBP pp |
| SUPERIOR VERANDA SUITE. From | £11832 GBP pp |

### 23-Jan-2026 to 01-Feb-2026

|                              |               |
|------------------------------|---------------|
| SILVER SUITE. From           | £19380 GBP pp |
| ROYAL SUITE. From            | £23766 GBP pp |
| DELUXE VERANDA SUITE. From   | £12291 GBP pp |
| OWNER'S SUITE. From          | £35139 GBP pp |
| MEDALLION SUITE. From        | £15963 GBP pp |
| CLASSIC VERANDA SUITE. From  | £10965 GBP pp |
| GRAND SUITE. From            | £28968 GBP pp |
| SUPERIOR VERANDA SUITE. From | £11832 GBP pp |

### 06-Feb-2026 to 15-Feb-2026

|                              |               |
|------------------------------|---------------|
| OWNER'S SUITE. From          | £35139 GBP pp |
| SUPERIOR VERANDA SUITE. From | £11832 GBP pp |
| ROYAL SUITE. From            | £23766 GBP pp |
| MEDALLION SUITE. From        | £15963 GBP pp |
| DELUXE VERANDA SUITE. From   | £12291 GBP pp |
| CLASSIC VERANDA SUITE. From  | £10965 GBP pp |
| GRAND SUITE. From            | £28968 GBP pp |
| SILVER SUITE. From           | £19380 GBP pp |

### 20-Feb-2026 to 01-Mar-2026

|                              |               |
|------------------------------|---------------|
| DELUXE VERANDA SUITE. From   | £12393 GBP pp |
| MEDALLION SUITE. From        | £16218 GBP pp |
| CLASSIC VERANDA SUITE. From  | £11067 GBP pp |
| OWNER'S SUITE. From          | £35751 GBP pp |
| SUPERIOR VERANDA SUITE. From | £11934 GBP pp |
| SILVER SUITE. From           | £19686 GBP pp |
| ROYAL SUITE. From            | £24174 GBP pp |
| GRAND SUITE. From            | £29478 GBP pp |



# The Small Cruise Ship Collection

[www.small-cruise-ships.com](http://www.small-cruise-ships.com)



[small-cruise-ships.com](http://small-cruise-ships.com)

[info@small-cruise-ships.com](mailto:info@small-cruise-ships.com)

## PRICING

### 06-Mar-2026 to 15-Mar-2026

|                                 |               |
|---------------------------------|---------------|
| SILVER SUITE. From              | £19686 GBP pp |
| CLASSIC VERANDA SUITE. From     | £11067 GBP pp |
| ROYAL SUITE. From               | £24174 GBP pp |
| GRAND SUITE. From               | £29478 GBP pp |
| DELUXE VERANDA SUITE. From      | £12393 GBP pp |
| MEDALLION SUITE. From           | £16218 GBP pp |
| SUPERIOR VERANDA SUITE.<br>From | £11934 GBP pp |
| OWNER'S SUITE. From             | £35751 GBP pp |

### 20-Mar-2026 to 29-Mar-2026

|                                 |               |
|---------------------------------|---------------|
| GRAND SUITE. From               | £29478 GBP pp |
| CLASSIC VERANDA SUITE. From     | £11067 GBP pp |
| OWNER'S SUITE. From             | £35751 GBP pp |
| ROYAL SUITE. From               | £24174 GBP pp |
| SILVER SUITE. From              | £19686 GBP pp |
| SUPERIOR VERANDA SUITE.<br>From | £11934 GBP pp |
| MEDALLION SUITE. From           | £16218 GBP pp |
| DELUXE VERANDA SUITE. From      | £12393 GBP pp |



The Small Cruise Ship Collection

[www.small-cruise-ships.com](http://www.small-cruise-ships.com)

01432 507 280 (within UK)

[info@small-cruise-ships.com](mailto:info@small-cruise-ships.com) | [small-cruise-ships.com](http://small-cruise-ships.com)