

The Small Cruise Ship Collection

www.small-cruise-ships.com



small-cruise-ships.com

info@small-cruise-ships.com

SCOTLAND SLOWLY - 11 DAY ADVENTURE CRUISE

Travel in comfort to Scotland's farthest-flung islands, only accessible by sea. Journey to Scotland's farthest-flung islands, including the Shetlands, Orkneys, and Outer Hebrides, where crofters and fisherfolk live close to the sea and maintain an island way of life. Make landings by Zodiac in places otherwise inaccessible to travellers and visit the abandoned settlement at St. Kilda, now a UNESCO World Heritage Site. Immerse yourself in history at standing stones, brochs, ruins, and castles. Wander wide-eyed through Scotland's rich and layered history that rises up from the ground to meet you. Visit archaeological ruins including standing stones, brochs, ancient complexes, and medieval castles. Learn about the English, Scots, Norse, Pictish, and Neolithic cultures that all made their mark in Scotland. Spot seabirds and whales in rich marine environments. Peruse Scotland's rocky coastlines that attract millions of seabirds, including northern gannets and puffins. Cruise the rich waters of the North Atlantic and North Sea that are favoured by numerous species of whales. Enjoy the springtime conditions that are excellent for viewing seabirds and spotting marine mammals. Sample fine Scotch straight from the source. Visit small distilleries, famed the world over, that are home to some of Scotland's most celebrated single malts. Tour these unique attractions, learn how Scotch is made, and sample some of the world's finest straight from the source. On Islay and around the islands, where fresh water and characteristic peat are found in plenty, numerous Scotch distillers ply their unique trade. Get up-close-and-personal to some of Europe's finest cliffs and caves on daily Zodiac rides. See for yourself why Felix Mendelssohn was inspired to write his overture The Hebrides

after visiting Fingal's Cave on the Isle of Staffa. Explore the rugged coastline and spot plentiful marine and bird life among Papa Stour's cliffs, caves, sea stacks, and blowholes. Access uninhabited isles only reachable



by Zodiac.

ITINERARY

Day 1: Glasgow/Greenock, Scotland - Begin Your Adventure

The Small Cruise Ship Collection
www.small-cruise-ships.com

01432 507 280 (within UK)

info@small-cruise-ships.com | small-cruise-ships.com



The Small Cruise Ship Collection

www.small-cruise-ships.com

small-cruise-ships.com

info@small-cruise-ships.com

After meeting in Glasgow we'll depart via coach, and travel onward to Greenock. Greenock has a rich maritime history and was a major shipbuilding and import centre. Here, we'll embark and start our journey.

Day 2: Islay - Tour the Loch Finlaggan Historic Site

Explore the renowned Loch Finlaggan Historic Site, tucked away in the enchanting Islay, also known as the Queen of the Hebrides. Immerse yourself in the rich history and heritage of the region. Indulge in the stories of Scottish nobility at the ancient seat of the Lord of the Isles and Clan Donald in the Finlaggan Castle. Delve into its captivating past and marvel at the artefacts on display in the site's museum.

If you're a Scotch lover (and who isn't?), take the opportunity to enhance your journey with an optional excursion to the world-renowned whisky distilleries that the island is famous for.

Day 3: Iona and Staffa - Make a Pilgrimage to Iona Abbey and Fingal's Cave

Visit Iona, where St. Columba established his monastery--the burial place of kings. Admire the beautifully restored Iona Abbey complex, which preserves two outstanding crosses dating as far

back as the eighth century.

Take a Zodiac cruise at the Isle of Staffa, famed for basaltic formations and numerous caves, the best-known being Fingal's Cave.

See for yourself why it is originally known in Gaelic as "the melodious cave" and provided the inspiration for Mendelssohn's overture, The Hebrides.

Day 4: Skye - Enjoy Photography, Birdwatching, and Hiking

Whether you're a hiker, photographer, or birder, you will love a visit to Skye.

Cruise the southwestern shore of this large island keeping a keen eye out for species like common sandpiper, oystercatcher, gannets, and razorbills. Delight in the opportunity to witness these remarkable creatures in their natural environment and add unique sightings to your birdwatching list.

Immerse yourself in the beauty of Skye's mountainous landscapes and choose the level of activity that suits you best for a walk, hike, or trek among the awe-inspiring Cuillin Hills, one of Britain's finest mountainscapes.

Day 5: St. Kilda - Journey to St. Kilda UNESCO World Heritage Site

The Small Cruise Ship Collection
www.small-cruise-ships.com

01432 507 280 (within UK)

info@small-cruise-ships.com | small-cruise-ships.com



The Small Cruise Ship Collection

www.small-cruise-ships.com



small-cruise-ships.com

info@small-cruise-ships.com

Day 7-8: Papa Stour and Foula - Take a Zodiac Cruise

The archipelago known as St. Kilda was inhabited until 1930. Today, St. Kilda is a UNESCO World Heritage Site, protecting fascinating ruins as well as natural heritage features.

Seabirds thrive on the island of Hirta, which is also home to feral sheep left by the departing islanders. Enormous cliffs offer dramatic ocean views for our hikers!

Day 6: Stornoway, Lewis - Witness Modern and Ancient Scottish Culture

Visit Stornoway on the Isle of Lewis, a Gaelic stronghold and the capital of the largest of the Hebrides. Browse charming shops to purchase the island's famous tweed.

Meander through one of Britain's most important Stone Age sites, Callanish's standing stones, which are said to be giants who were punished by St. Kieran for refusing to convert to Christianity.

Experience the living history at Garrannan Blackhouse Village, where you can learn about a typical crofting township of the last century. Explore the blackhouses and traditional activities, including the weaving of the famous Harris Tweed.

Discover Dun Carloway Broch, a uniquely Scottish site perched on a rocky mound. See this ancient structure, standing at an impressive nine metres tall.

Explore the rugged coastline and spot flourishing marine and bird life among Papa Stour's cliffs, caves, sea stacks, and blowholes on a Zodiac cruise.

Call in at sweet and petite Foula, twenty-three kilometres west of the Shetland Islands, home to just a few dozen folks, many of whom preserve traditional methods of agriculture and subsistence.

Keep an eye out for the Arctic terns, red-throated divers, and great skuas that may be found here.

Day 9: Fair Isle - Enjoy Birdwatching and Serene Island Culture

Journey to charming Fair Isle, once a Viking hub and now an idyllic island colony of artists and shepherds.

Keep your binoculars handy to spot some of the 350 bird species that the island boasts, including puffins and great skuas in substantial numbers.

Take a tour of the local museum, dedicated to preserving the island's heritage.



The Small Cruise Ship Collection
www.small-cruise-ships.com

01432 507 280 (within UK)

info@small-cruise-ships.com | small-cruise-ships.com



The Small Cruise Ship Collection

www.small-cruise-ships.com



small-cruise-ships.com

info@small-cruise-ships.com

Day 10: Kirkwall, Orkney - Visit the Heart of Neolithic Orkney UNESCO World Heritage Site

displays.

Say your farewells in this modern city that retains its old-world charm.

Please Note:

Itineraries are subject to change.

Wander through the stone walls of the Heart of Neolithic Orkney, a UNESCO World Heritage Site, where you'll find the 4,000-year-old Ring of Brodgar.

Tour the Hall of Clestrain, childhood home of Arctic explorer John Rae. In Kirkwall, let yourself be captivated by the city's sights, dominated by the massive St. Magnus Cathedral dating back to 1137.

Experience its lively pubs, vibrant music scene, fabulous shopping opportunities, and thriving artisan community.

Step back 5,000 years to the Neolithic village of Skara Brae. Considered one of the most important Neolithic ruins in Europe today, wander the well-preserved stone houses and learn what daily life was like here.

Day 11: Aberdeen, Scotland - Wave a Fond Farewell

Complete your journey by disembarking in Aberdeen.

Many of the historic stone buildings here are made of locally quarried granite; high in mica, they can sparkle like silver. The city is also famed for its forty-five parks, gardens, and floral



The Small Cruise Ship Collection

www.small-cruise-ships.com

01432 507 280 (within UK)

info@small-cruise-ships.com | small-cruise-ships.com

The Small Cruise Ship Collection

www.small-cruise-ships.com



small-cruise-ships.com

info@small-cruise-ships.com

YOUR SHIP: OCEAN ENDEAVOUR

YOUR SHIP: Ocean Endeavour

VESSEL TYPE:

LENGTH:

PASSENGER CAPACITY:

BUILT/REFURBISHED:

Sailing with a maximum of 198-passengers, Ocean Endeavour is the perfect vessel for expedition cruising. Outfitted with twenty Zodiacs, advanced navigation equipment, multiple lounges and a top deck observation room, she is purpose-built for passenger experiences in remote environments. The Ocean Endeavour boasts a 1B ice class, enabling her to freely explore throughout the Arctic summer. Launched in 1982, she has had numerous upgrades, most recently in 2010 and 2014. At 137 meters (450ft) in length, Ocean Endeavour has plenty of interior and exterior space. Enjoy multiple decks offering comfortable lounge chairs, outdoor dining, a swimming pool, sauna and even a hot tub! The spacious interiors allow for multiple workshops and presentations to occur simultaneously. Community is at the heart of Adventure Canada's expedition experience. We gather together to learn, enjoy a drink, sing a song or share a yarn - connecting with one and other. The three lounges aboard Ocean Endeavour are fantastic public spaces for seminars, events and dialogue. The Ocean Endeavour's private spaces are stylish and comfortable. All cabins have private washroom facilities, a phone for internal calls, radio, TV and air-conditioning. There are a variety of cabin categories available ranging from 9-30 m2

(100-320 sq ft). Ocean Endeavour's crew is experienced, and friendly. Her shallow draft and maneuverability allow her to access isolated fiords, bays and secluded communities. The stylish vessel is at home among the glorious settings we seek. Enjoy the class and comfort of a boutique hotel, while venturing to some of the world's last great frontiers aboard the Ocean



Endeavour!

The Small Cruise Ship Collection
www.small-cruise-ships.com

01432 507 280 (within UK)

info@small-cruise-ships.com | small-cruise-ships.com

The Small Cruise Ship Collection

www.small-cruise-ships.com



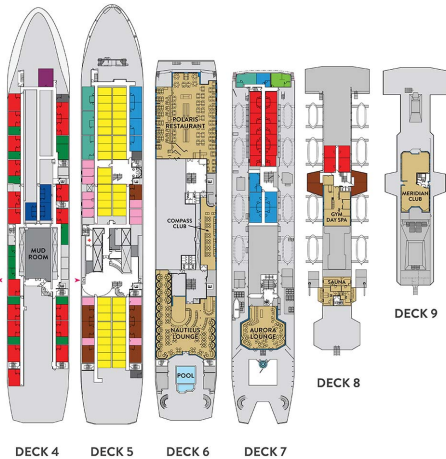
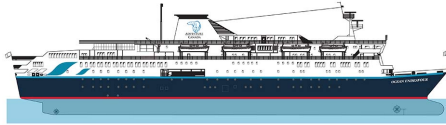
small-cruise-ships.com

info@small-cruise-ships.com

INSIDE YOUR SHIP

CABIN CATEGORIES

- CATEGORY 10 | SUITE**
Deck seven forward-facing picture windows, unobstructed view; matrimonial bed, private bath with full tub, refrigerator – approx. 310 sq. ft.
- CATEGORY 9 | JUNIOR SUITE**
Deck five (picture windows, unobstructed view; matrimonial bed, sitting area – approx. 270 sq. ft.), deck seven forward (forward-facing picture windows, unobstructed; matrimonial bed, private bath with full tub, sitting area – approx. 290 sq. ft.) private bath, refrigerator.
- CATEGORY 8 | SUPERIOR TWIN**
Deck five (two picture windows, unobstructed view; two lower berths, sitting area – approx. 270 sq. ft.), deck seven forward (forward-facing picture windows, unobstructed; matrimonial bed, private bath with full tub – approx. 180 sq. ft.), deck seven midship (picture windows, partial obstruction; matrimonial bed – approx. 190 sq. ft.) private bath, refrigerator.
- CATEGORY 7 | SELECT TWIN**
Deck five (picture windows, unobstructed view, two lower berths OR matrimonial bed, approx. 190 sq. ft.) and deck eight (over-size windows, partial obstruction; matrimonial bed – approx. 140 sq. ft.) private bath, refrigerator.
- CATEGORY 6 | COMFORT TWIN**
Deck four (two porthole windows, unobstructed view; two lower berths OR matrimonial bed – approx. 175 sq. ft.), deck seven (picture window, partial obstruction; two lower berths – approx. 135 sq. ft.) and deck eight (picture windows, obstructed view; matrimonial bed – approx. 160 sq. ft.) private bath, refrigerator.
- CATEGORY 5 | MAIN TWIN**
Deck five (picture window, unobstructed view; two lower berths, private bath – approx. 115 sq. ft.
- CATEGORY 4 | EXTERIOR TWIN**
Deck four (porthole window, unobstructed view; two lower berths, private bath – approx. 100 sq. ft. (Twin) / 90 sq. ft. (Single).
- CATEGORY 3 | INTERIOR TWIN**
Deck five (interior cabin, two lower berths, private bath – approx. 125 sq. ft. (Twin) / 110 sq. ft. (Single).
- CATEGORY 2 | TRIPLE**
Deck four (interior cabin, three lower berths, two private baths – approx. 200 sq. ft.
- CATEGORY 1 | QUAD**
Deck four (interior cabin, four lower berths, private bath (separate shower room and powder room) – approx. 240 sq. ft.



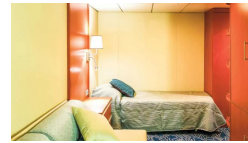
Cabin Category 1



Cabin Category 10



Cabin Category 2



Cabin Category 3



Cabin Category 4

Cabin Category 5

Cabin Category 6

Cabin Category 7

Cabin Category 8

Cabin Category 9



The Small Cruise Ship Collection

www.small-cruise-ships.com



small-cruise-ships.com

info@small-cruise-ships.com

PRICING

03-Jun-2025 to 13-Jun-2025

Cabin Category 6	£10396 GBP pp
Cabin Category 7	£11196 GBP pp
Cabin Category 9	£12796 GBP pp
Cabin Category 4	£8796 GBP pp
Cabin Category 3	£7756 GBP pp
Cabin Category 1	£5916 GBP pp
Cabin Category 10	£13596 GBP pp
Cabin Category 8	£11996 GBP pp
Cabin Category 5	£9596 GBP pp
Cabin Category 2	£6716 GBP pp

13-Jun-2025 to 23-Jun-2025

Cabin Category 9	£12796 GBP pp
Cabin Category 4	£8796 GBP pp
Cabin Category 2	£6716 GBP pp
Cabin Category 1	£5916 GBP pp
Cabin Category 10	£13596 GBP pp
Cabin Category 6	£10396 GBP pp
Cabin Category 5	£9596 GBP pp
Cabin Category 8	£11996 GBP pp
Cabin Category 3	£7756 GBP pp
Cabin Category 7	£11196 GBP pp