



The Small Cruise
Ship Collection

www.small-cruise-ships.com



small-cruise-ships.com

info@small-cruise-ships.com

SCOTLAND, THE FAROE ISLANDS, & ICELAND: NORTH ATLANTIC SAGA - 11 DAY ADVENTURE CRUISE

Hike emerald mountainscapes to the stunning M ulafossur waterfall. Take the perfect photo at the Mulafossur waterfall, plunging into the North Atlantic from Gasadalur, a small village home to about twenty people. Enjoy the stunning scenery surrounding this picturesque village, settled under the highest mountain on Vagar island. Wander through sites of Neolithic Scottish history at Orkney's Ring of Brodgar. Take a stroll through the Heart of Neolithic Orkney, a UNESCO World Heritage Site and home to the 4,000-year-old Ring of Brodgar. You'll be fascinated by the many archaeological sites that have been preserved here, including villages, ceremonial sites, and burial chambers. Visit charming T orshavn, the quaint capital of the far-flung Faroe Islands. Admire the history and beauty of Torshavn's red-painted wooden buildings covered with turf roofs. Explore this splendid little city, home to the Faroese government and a former Viking trading centre. Be sure to visit the treasured national art gallery at Nordic House, surrounded by gorgeous grounds with walking trails. Witness spectacular volcanoes, caves, cliffs, and fjords in Iceland 's geological wonderland. Stand in awe of volcanoes, waterfalls, mountains, fjords, sea stacks, bird cliffs, lava fields, glaciers, and caves. See a landscape unlike any other, dominated by geology and defined by the sea at the edge of the Arctic Circle. Even if you're not a geologist, Iceland has something for you!



The Small Cruise
Ship Collection

www.small-cruise-ships.com

01432 507 280 (within UK)

info@small-cruise-ships.com | small-cruise-ships.com



The Small Cruise Ship Collection

www.small-cruise-ships.com



small-cruise-ships.com

info@small-cruise-ships.com

Many of the historic stone buildings here are made of locally quarried granite; high in mica, they can sparkle like silver.

The city is also famed for its forty-five parks, gardens, and floral displays. Though it is now a modern city, Aberdeen retains its old-world charm.

Day 2: Kirkwall, Orkney - Visit the Heart of Neolithic Orkney UNESCO World Heritage Site

Wander through the stone walls of the Heart of Neolithic Orkney, a UNESCO World Heritage Site, where you'll find the 4,000-year-old Ring of Brodgar.

Tour the Hall of Clestrain, childhood home of Arctic explorer John Rae. In Kirkwall, let yourself be captivated by the city's sights, dominated by the massive St. Magnus Cathedral dating back to 1137.

Experience its lively pubs, vibrant music scene, fabulous shopping opportunities, and thriving artisan community.

Step back 5,000 years to the Neolithic village of Skara Brae. Considered one of the most important Neolithic ruins in Europe today, wander the well-preserved stone houses and learn what daily life was like here.

Day 3: Fair Isle - Enjoy Birdwatching at a Serene Island Community

Journey to charming Fair Isle, once a Viking hub and now an



ITINERARY

Day 1: Aberdeen, Scotland - Begin Your Adventure

After a day of independent exploration in Aberdeen, you'll embark for an evening departure.



The Small Cruise Ship Collection

www.small-cruise-ships.com

01432 507 280 (within UK)

info@small-cruise-ships.com | small-cruise-ships.com



The Small Cruise Ship Collection

www.small-cruise-ships.com

small-cruise-ships.com

info@small-cruise-ships.com

idyllic island colony of artists and shepherds.

Keep your binoculars handy to spot some of the 350 bird species that the island boasts, including puffins and great skuas in substantial numbers.

Take a tour of the local museum, dedicated to preserving the island's heritage.

Day 4: Vágur, Suðuroy Island, Faroe Islands - Immerse Yourself in Faroese Culture

Visit Vagur, where the warm hospitality of its 1,300 residents awaits you. Relish in the opportunity to witness Faroese chain dancing and share in stories of Vagur's captivating past. Enjoy the abundance of birdlife that the island boasts.

Let your senses feast on the view of Suðuroy's towering west side. Admire majestic cliffs, stunning mountains, sea stacks, and the magnificent Beinisvørð mountain as it stands tall from afar.

See for yourself why the island is famed for its dramatic cliffs towering over the North Atlantic and enjoy this paradise for birds, including European storm petrels and Atlantic puffins.

Day 5: Tórshavn - Visit Galleries, Shops, and Restaurants

Explore the splendid little city of Torshavn ("Thor's harbour"), the Faroe Islands' capital and a former Viking trading centre.

Stroll through the enchanting streets of the old town, where you'll discover a treasure trove of galleries, charming shops, and restaurants.

Admire the buildings with their grass roofs and black timber façades, offering a glimpse into traditional Faroese architecture and culture.

Day 6-8: Western Faroe Islands - Soak in Dramatic Mountains and Waterfalls

Eysturoy and Streymoy islands are perfect for hiking, birding, and photography. Charming villages connected by high-tech tunnels through mountains and beneath the ocean floor are a unique and startling feature of Faroese life.

Explore remote Faroese villages Elduvik and Funningur via Zodiac. With a population of only 12 and 70 respectively, these villages offer a glimpse into Faroese island life. As you meander through the dramatic landscape surrounded by beautiful mountains, get to know the locals and enjoy exploring the picturesque bays these villages call home.

The spectacular waterfall at Gasadalur is reached through one such tunnel—but look for the old switchback trail over the mountain, once used by the local postman!

Day 9: At Sea - Learn On Board

Deepen your understanding of the environment, cultures, and history of the region as we steam across the North Atlantic

The Small Cruise Ship Collection

www.small-cruise-ships.com

01432 507 280 (within UK)

info@small-cruise-ships.com | small-cruise-ships.com



The Small Cruise Ship Collection

www.small-cruise-ships.com



small-cruise-ships.com

info@small-cruise-ships.com

towards Iceland.

Please Note:

Enjoy workshops and presentations, watch a documentary, and get out on deck!

Itineraries are subject to change.

Day 10: Heimaey, Vestmannaeyjar (Westman Islands), Iceland - Marvel at Volcanic Landscapes

Vestmannaeyjar lies off the south coast of Iceland and comprises fourteen islands, numerous rocks, and skerries. Only the largest island, Heimaey, is inhabited.

Numerous species of seabirds, including the famous puffin, nest in the steep rock faces along the ocean cliffs. The volcanically active area has seen two major eruptions in recent times: the formation of the island of Surtsey in 1963, and the Eldfell eruption ten years later that destroyed much of Heimaey.

Day 11: Reykjavík, Iceland - Wave a Fond Farewell

Complete your journey in Reykjavik, Iceland's cosmopolitan capital that was established in the year 874 CE.

Food, culture, and nightlife abound, while the National Culture House preserves treasures like the Poetic Edda and the Norse Sagas in their original manuscripts.

Disembark in the morning and say your farewells in what is widely considered one of the cleanest, greenest cities in the world.



The Small Cruise
Ship Collection

www.small-cruise-ships.com

01432 507 280 (within UK)

info@small-cruise-ships.com | small-cruise-ships.com

The Small Cruise Ship Collection

www.small-cruise-ships.com



small-cruise-ships.com

info@small-cruise-ships.com

YOUR SHIP: OCEAN ENDEAVOUR

YOUR SHIP: Ocean Endeavour

VESSEL TYPE:

LENGTH:

PASSENGER CAPACITY:

BUILT/REFURBISHED:

(100-320 sq ft). Ocean Endeavour's crew is experienced, and friendly. Her shallow draft and maneuverability allow her to access isolated fiords, bays and secluded communities. The stylish vessel is at home among the glorious settings we seek. Enjoy the class and comfort of a boutique hotel, while venturing to some of the world's last great frontiers aboard the Ocean

Sailing with a maximum of 198-passengers, Ocean Endeavour is the perfect vessel for expedition cruising. Outfitted with twenty Zodiacs, advanced navigation equipment, multiple lounges and a top deck observation room, she is purpose-built for passenger experiences in remote environments. The Ocean Endeavour boasts a 1B ice class, enabling her to freely explore throughout the Arctic summer. Launched in 1982, she has had numerous upgrades, most recently in 2010 and 2014. At 137 meters (450ft) in length, Ocean Endeavour has plenty of interior and exterior space. Enjoy multiple decks offering comfortable lounge chairs, outdoor dining, a swimming pool, sauna and even a hot tub! The spacious interiors allow for multiple workshops and presentations to occur simultaneously. Community is at the heart of Adventure Canada's expedition experience. We gather together to learn, enjoy a drink, sing a song or share a yarn - connecting with one and other. The three lounges aboard Ocean Endeavour are fantastic public spaces for seminars, events and dialogue. The Ocean Endeavour's private spaces are stylish and comfortable. All cabins have private washroom facilities, a phone for internal calls, radio, TV and air-conditioning. There are a variety of cabin categories available ranging from 9-30 m2



Endeavour!

The Small Cruise Ship Collection
www.small-cruise-ships.com

01432 507 280 (within UK)

info@small-cruise-ships.com | small-cruise-ships.com

The Small Cruise Ship Collection

www.small-cruise-ships.com



small-cruise-ships.com

info@small-cruise-ships.com

INSIDE YOUR SHIP

CABIN CATEGORIES

CATEGORY 10 | SUITE
 Deck seven forward-facing picture windows, unobstructed view; matrimonial bed, private bath with full tub, refrigerator – approx. 310 sq. ft.

CATEGORY 9 | JUNIOR SUITE
 Deck five (picture windows, unobstructed view; matrimonial bed, sitting area – approx. 270 sq. ft.), deck seven forward (forward-facing picture windows, unobstructed; matrimonial bed, private bath with full tub, sitting area – approx. 290 sq. ft.) private bath, refrigerator.

CATEGORY 8 | SUPERIOR TWIN
 Deck five (two picture windows, unobstructed view; two lower berths, sitting area – approx. 270 sq. ft.), deck seven forward (forward-facing picture windows, unobstructed; matrimonial bed, private bath with full tub – approx. 180 sq. ft.), deck seven midship (picture windows, partial obstruction; matrimonial bed – approx. 190 sq. ft.) private bath, refrigerator.

CATEGORY 7 | SELECT TWIN
 Deck five (picture windows, unobstructed view, two lower berths OR matrimonial bed, approx. 190 sq. ft.) and deck eight (over-size window, partial obstruction; matrimonial bed – approx. 145 sq. ft.) private bath, refrigerator.

CATEGORY 6 | COMFORT TWIN
 Deck four (two porthole windows, unobstructed view; two lower berths OR matrimonial bed – approx. 175 sq. ft.), deck seven (picture window, partial obstruction; two lower berths – approx. 135 sq. ft.) and deck eight (picture windows, obstructed view; matrimonial bed – approx. 160 sq. ft.) private bath, refrigerator.

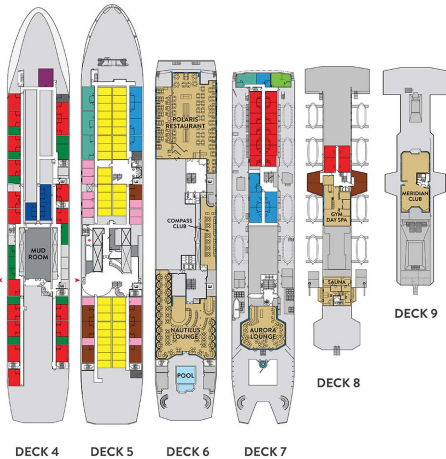
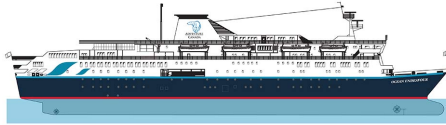
CATEGORY 5 | MAIN TWIN
 Deck five (picture window, unobstructed view; two lower berths, private bath – approx. 115 sq. ft.)

CATEGORY 4 | EXTERIOR TWIN
 Deck four (porthole window, unobstructed view; two lower berths, private bath – approx. 100 sq. ft. (twin) / 90 sq. ft. (single))

CATEGORY 3 | INTERIOR TWIN
 Deck five (interior cabin, two lower berths, private bath – approx. 125 sq. ft. (twin) / 110 sq. ft. (single))

CATEGORY 2 | TRIPLE
 Deck four (interior cabin, three lower berths, two private baths – approx. 200 sq. ft.)

CATEGORY 1 | QUAD
 Deck four (interior cabin, four lower berths, private bath (separate shower room and powder room) – approx. 240 sq. ft.)



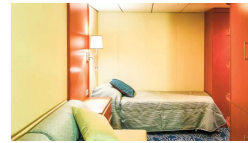
Cabin Category 1



Cabin Category 10



Cabin Category 2



Cabin Category 3



Cabin Category 4

Cabin Category 6

Cabin Category 8

Cabin Category 5

Cabin Category 7

Cabin Category 9



The Small Cruise Ship Collection

www.small-cruise-ships.com



small-cruise-ships.com

info@small-cruise-ships.com

PRICING

23-Jun-2025 to 03-Jul-2025

Cabin Category 9	£10776 GBP pp
Cabin Category 8	£10006 GBP pp
Cabin Category 6	£8466 GBP pp
Cabin Category 5	£7696 GBP pp
Cabin Category 4	£6926 GBP pp
Cabin Category 3	£5925 GBP pp
Cabin Category 1	£4154 GBP pp
Cabin Category 10	£11546 GBP pp
Cabin Category 2	£4924 GBP pp
Cabin Category 7	£9236 GBP pp



The Small Cruise Ship Collection

www.small-cruise-ships.com

01432 507 280 (within UK)

info@small-cruise-ships.com | small-cruise-ships.com