



# The Small Cruise Ship Collection

www.small-cruise-ships.com

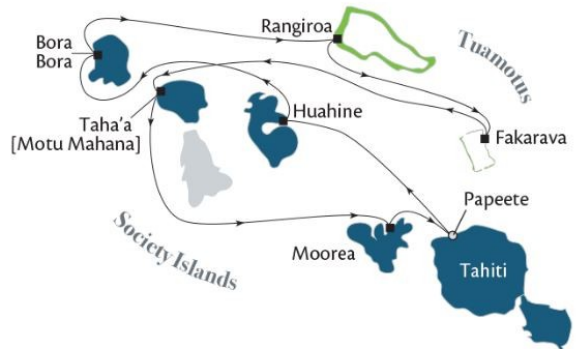


small-cruise-ships.com

info@small-cruise-ships.com

## SOCIETY ISLANDS & TUAMOTUS ABOARD PAUL GAUGUIN

Beauty surrounds you on this 10-day sojourn, both on land and underwater. The Society Islands beckon with lush rainforests, crystal-clear lagoons, and warm breezes that encourage nothing but indulgent beachside lounging. Continue on to the Tuamotu Archipelago, a collection of low-lying atolls known the world 'round for their vibrant underwater ecosystem.



### ITINERARY

Day 1 - Embark the m/s Paul Gauguin in Papeete, Tahiti, Society Islands  
The islands of Polynesia are a gorgeous collection of volcanic atolls strewn across the grand Pacific Ocean, and the island of Tahiti is the largest of all 118. Explore the dynamic dining, nightlife, and shopping in the capital city of Papeete before embarking on The Gauguin.

Day 2 - Huahine, Society Islands



www.small-cruise-ships.com

01432 507 280 (within UK)

info@small-cruise-ships.com | small-cruise-ships.com



## The Small Cruise Ship Collection

[www.small-cruise-ships.com](http://www.small-cruise-ships.com)



[small-cruise-ships.com](http://small-cruise-ships.com)

[info@small-cruise-ships.com](mailto:info@small-cruise-ships.com)

Known as “The Garden Island,” Huahine’s lush rainforests and dramatic terrain surround sacred sites and legendary landmarks that are among the best-preserved archeological sites in French Polynesia. If Huahine’s expansive lagoon is calling your name, enjoy a SCUBA diving excursion or picnic on the beach.

#### Day 3 - Bora Bora, Society Islands

Immediately recognizable by Mount Otemanu rising from the ocean, this half-atoll, half-mountain is surrounded by a spectacular lagoon and a series of smaller islands. Ancient Polynesians called it Parapora, or “firstborn,” because they thought it was the first island created after Raiatea.

#### Day 4 - Bora Bora, Society Islands

A bucket list destination for many, stunning Bora Bora welcomes you to explore lush peaks, white-sand beaches, colorful coral reefs, and romantic lagoons. Experience the natural beauty of the island with an optional snorkeling excursion, sunset jetboat ride, or a 4x4 tour around Bora Bora’s iconic Mount Otemanu. You can also spend time at our private beach which offers volleyball, snorkeling, kayaking and paddleboarding.

#### Day 5 - Rangiroa, Tuamotus

Rangiroa is the largest island in the Tuamotu Archipelago, which is made up of 78 coral atolls scattered over several hundred miles. Experience the simple, quiet, and peaceful life on these islands by participating in the daily activities of the Paumotu people.

#### Day 6 - Fakarava, Tuamotus

Before modern navigation, this region was known as the “Dangerous Archipelago” for its shallow passages. Today, that same characteristic makes Fakarava a diver’s paradise. Those

who prefer to stay on dry land can explore charming villages, ancient temples, and a 19th century coral church.

#### Day 7 - At Sea

Spend the day enjoying The Gauguin’s Polynesian ambiance: casual, leisurely, and graceful. Perhaps you’ll take in a lecture by one of our special guests, and then reflect on your day over classic French cuisine at L’Etoile.

#### Day 8 - Taha’a (Motu Mahana), Society Islands

Embark on your choice of exciting shore excursions today, or spend your whole day relaxing on Motu Mahana, our very own private islet. Enjoy swimming, snorkeling, and kayaking, or simply lounge on the beach with a chilled beverage from our floating bar. Les Gauguines will also be on hand to provide musical entertainment and demonstrate traditional Polynesian crafts. A delicious barbecue lunch is provided.

#### Day 9 - Moorea, Society Islands

Vibrant colors abound during the leisurely days in Moorea, in everything from fresh fruits and flowers to multi-hued lagoons, and from spectacular mountain peaks to palm-fringed beaches. Shop for local handicrafts, embark on an optional dolphin-watching expedition with a marine biologist, and sample the local pineapples, said to be the most delicious in all of French Polynesia.

#### Day 10 - Moorea, Society Islands / Papeete, Tahiti, Society Islands

Vibrant colors abound on Moorea, in everything from fresh fruits and flowers to multi-hued lagoons, and from spectacular mountain peaks to palm-fringed beaches. Shop for local handicrafts, embark on an optional dolphin-watching expedition with a marine biologist, and sample the local pineapples, said



The Small Cruise Ship Collection

[www.small-cruise-ships.com](http://www.small-cruise-ships.com)

01432 507 280 (within UK)

[info@small-cruise-ships.com](mailto:info@small-cruise-ships.com) | [small-cruise-ships.com](http://small-cruise-ships.com)



## The Small Cruise Ship Collection

[www.small-cruise-ships.com](http://www.small-cruise-ships.com)



[small-cruise-ships.com](http://small-cruise-ships.com)

[info@small-cruise-ships.com](mailto:info@small-cruise-ships.com)

to be the most delicious in all of French Polynesia.

Day 11 - Disembark in Papeete, Tahiti, Society Islands

Tahiti's capital city of Papeete welcomes you back with emerald hillsides, sapphire waters, and warm breezes. If you're not ready for your South Pacific vacation to end, spend a few days here experiencing resorts, spas, restaurants, nightlife, and shopping.

Please Note:

Itineraries are subject to change.



The Small Cruise  
Ship Collection

[www.small-cruise-ships.com](http://www.small-cruise-ships.com)

**01432 507 280** (within UK)

[info@small-cruise-ships.com](mailto:info@small-cruise-ships.com) | [small-cruise-ships.com](http://small-cruise-ships.com)



## The Small Cruise Ship Collection

[www.small-cruise-ships.com](http://www.small-cruise-ships.com)



[small-cruise-ships.com](http://small-cruise-ships.com)

[info@small-cruise-ships.com](mailto:info@small-cruise-ships.com)

### YOUR SHIP: PAUL GAUGUIN

**YOUR SHIP:** Paul Gauguin

**VESSEL TYPE:**

**LENGTH:**

**PASSENGER CAPACITY:**

**BUILT/REFURBISHED:**

Designed specifically to glide through the shallow seas of the South Pacific, The Gauguin is a small-ship cruiser's dream. She delivers travelers to intimate ports inaccessible to larger cruise ships, all the while providing an onboard experience that is nothing short of luxurious. Guests aboard luxury cruises enjoy spacious suites and staterooms (more than 70% with private balconies), an onboard watersports marina, three dining venues, an extensive spa, and five-star service. Life onboard also reflects the beauty and rich cultural heritage of the islands she calls upon, with a warm, friendly feel, informal setting, and even a beloved troupe of Gauguines and Gauguins--local Tahitians who serve as cruise staff, entertainers, and storytellers. Ship Features All oceanview accommodations, nearly 70% with balconies, measuring from 200 to 500 sq. ft., including balcony Butler service, in-suite bar setup, and iPod® music system in suite/stateroom category B and above A choice of three dining venues Complimentary 24-hour room service, including selections from L'Etoile restaurant during regular dining hours Complimentary beverages, including select wines and spirits, beer, soft drinks, bottled water, and hot beverages Onboard gratuities for room stewards, dining and bar staff Full

entertainment program including Polynesian artists, musical entertainment, a pianist, and a professionally operated casino with slot machines Spa and beauty services, including hand and foot treatments, body treatments, facials, and spa programs Optional PADI SCUBA diving program and certification Watersports marina for complimentary kayaking and paddleboarding, and Zodiacs® for optional dive excursions Fully-equipped fitness center Presentations by local naturalists and a variety of special guests Spacious outdoor decks and pool La Boutique duty-free shop Book library (open 24 hours a day) Wi-Fi hot spots throughout the ship to cover most suites/staterooms and common areas, as well as guest-accessible computers, available 24 hours a day for a nominal fee Laundry services available Certified medical services 166 suites/staterooms on Decks 3-8, including one wheelchair-accessible stateroom and select staterooms that can accommodate



01432 507 280 (within UK)

[info@small-cruise-ships.com](mailto:info@small-cruise-ships.com) | [small-cruise-ships.com](http://small-cruise-ships.com)



# The Small Cruise Ship Collection

[www.small-cruise-ships.com](http://www.small-cruise-ships.com)



[small-cruise-ships.com](http://small-cruise-ships.com)

[info@small-cruise-ships.com](mailto:info@small-cruise-ships.com)

three guests



The Small Cruise Ship Collection

[www.small-cruise-ships.com](http://www.small-cruise-ships.com)

**01432 507 280** (within UK)

[info@small-cruise-ships.com](mailto:info@small-cruise-ships.com) | [small-cruise-ships.com](http://small-cruise-ships.com)



# The Small Cruise Ship Collection

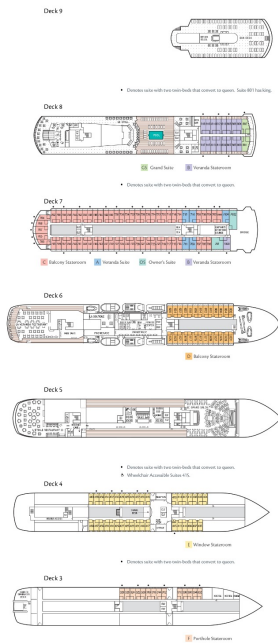
www.small-cruise-ships.com



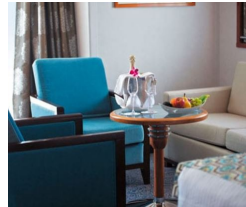
small-cruise-ships.com

info@small-cruise-ships.com

## INSIDE YOUR SHIP

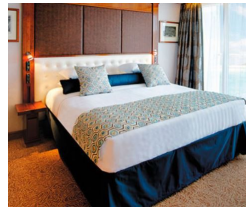


Balcony Stateroom. From Grand Suite



Owner's Suite. From

Porthole Stateroom



Veranda Stateroom

Veranda Suite





# The Small Cruise Ship Collection

www.small-cruise-ships.com



small-cruise-ships.com

info@small-cruise-ships.com

## PRICING

### 14-May-2025 to 24-May-2025

Window Stateroom	£6283 GBP pp
Balcony Stateroom. From	£7848 GBP pp
Owner's Suite. From	£17967 GBP pp
Veranda Suite	£14076 GBP pp
Grand Suite	£17268 GBP pp
Veranda Stateroom	£10470 GBP pp
Porthole Stateroom	£5411 GBP pp

### 26-Nov-2025 to 06-Dec-2025

Grand Suite	£17268 GBP pp
Window Stateroom	£6283 GBP pp
Veranda Stateroom	£10470 GBP pp
Balcony Stateroom. From	£7848 GBP pp
Owner's Suite. From	£17967 GBP pp
Porthole Stateroom	£5411 GBP pp
Veranda Suite	£14076 GBP pp

### 04-Jun-2025 to 14-Jun-2025

Veranda Suite	£14076 GBP pp
Owner's Suite. From	£17967 GBP pp
Window Stateroom	£6283 GBP pp
Balcony Stateroom. From	£7848 GBP pp
Porthole Stateroom	£5411 GBP pp
Grand Suite	£17268 GBP pp
Veranda Stateroom	£10470 GBP pp

### 07-Jan-2026 to 17-Jan-2026

Porthole Stateroom	£5523 GBP pp
Veranda Stateroom	£10393 GBP pp
Balcony Stateroom. From	£8256 GBP pp
Veranda Suite	£14371 GBP pp
Owner's Suite. From	£18880 GBP pp
Window Stateroom	£6415 GBP pp
Grand Suite	£17635 GBP pp

### 08-Oct-2025 to 18-Oct-2025

Balcony Stateroom. From	£7848 GBP pp
Window Stateroom	£6283 GBP pp
Veranda Stateroom	£10470 GBP pp
Grand Suite	£17268 GBP pp
Veranda Suite	£14076 GBP pp
Porthole Stateroom	£5411 GBP pp
Owner's Suite. From	£17967 GBP pp



01432 507 280 (within UK)

info@small-cruise-ships.com | small-cruise-ships.com



# The Small Cruise Ship Collection

[www.small-cruise-ships.com](http://www.small-cruise-ships.com)



[small-cruise-ships.com](http://small-cruise-ships.com)

[info@small-cruise-ships.com](mailto:info@small-cruise-ships.com)

## PRICING

### 25-Feb-2026 to 07-Mar-2026

Owner's Suite. From	£18885 GBP pp
Balcony Stateroom. From	£8259 GBP pp
Window Stateroom	£6419 GBP pp
Veranda Suite	£14375 GBP pp
Porthole Stateroom	£5525 GBP pp
Grand Suite	£17639 GBP pp
Veranda Stateroom	£10395 GBP pp

### 13-May-2026 to 23-May-2026

Porthole Stateroom	£5523 GBP pp
Veranda Suite	£14371 GBP pp
Veranda Stateroom	£10393 GBP pp
Window Stateroom	£6415 GBP pp
Owner's Suite. From	£18880 GBP pp
Grand Suite	£17635 GBP pp
Balcony Stateroom. From	£8256 GBP pp

### 08-Apr-2026 to 18-Apr-2026

Porthole Stateroom	£5523 GBP pp
Window Stateroom	£6415 GBP pp
Owner's Suite. From	£18880 GBP pp
Veranda Stateroom	£10393 GBP pp
Balcony Stateroom. From	£8256 GBP pp
Grand Suite	£17635 GBP pp
Veranda Suite	£14371 GBP pp

### 18-Jul-2026 to 28-Jul-2026

Balcony Stateroom. From	£8690 GBP pp
Veranda Suite	£15136 GBP pp
Porthole Stateroom	£5808 GBP pp
Owner's Suite. From	£19895 GBP pp
Veranda Stateroom	£10944 GBP pp
Grand Suite	£18579 GBP pp
Window Stateroom	£6747 GBP pp

### 02-May-2026 to 12-May-2026

Veranda Stateroom	£10944 GBP pp
Window Stateroom	£6747 GBP pp
Grand Suite	£18579 GBP pp
Porthole Stateroom	£5808 GBP pp
Owner's Suite. From	£19895 GBP pp
Balcony Stateroom. From	£8690 GBP pp
Veranda Suite	£15136 GBP pp



The Small Cruise Ship Collection

[www.small-cruise-ships.com](http://www.small-cruise-ships.com)

01432 507 280 (within UK)

[info@small-cruise-ships.com](mailto:info@small-cruise-ships.com) | [small-cruise-ships.com](http://small-cruise-ships.com)





# The Small Cruise Ship Collection

www.small-cruise-ships.com



small-cruise-ships.com

info@small-cruise-ships.com

## PRICING

### 29-Jul-2026 to 08-Aug-2026

Porthole Stateroom	£5523 GBP pp
Veranda Stateroom	£10393 GBP pp
Veranda Suite	£14371 GBP pp
Window Stateroom	£6415 GBP pp
Grand Suite	£17635 GBP pp
Owner's Suite. From	£18880 GBP pp
Balcony Stateroom. From	£8256 GBP pp

### 12-Sep-2026 to 22-Sep-2026

Balcony Stateroom. From	£8690 GBP pp
Veranda Suite	£15136 GBP pp
Porthole Stateroom	£5808 GBP pp
Window Stateroom	£6747 GBP pp
Owner's Suite. From	£19895 GBP pp
Veranda Stateroom	£10944 GBP pp
Grand Suite	£18579 GBP pp

### 23-Sep-2026 to 03-Oct-2026

Porthole Stateroom	£5523 GBP pp
Veranda Stateroom	£10393 GBP pp
Veranda Suite	£14371 GBP pp
Grand Suite	£17635 GBP pp
Balcony Stateroom. From	£8256 GBP pp
Window Stateroom	£6415 GBP pp
Owner's Suite. From	£18880 GBP pp

### 02-Dec-2026 to 12-Dec-2026

Balcony Stateroom. From	£8256 GBP pp
Owner's Suite. From	£18880 GBP pp
Porthole Stateroom	£5523 GBP pp
Veranda Stateroom	£10393 GBP pp
Window Stateroom	£6415 GBP pp
Veranda Suite	£14371 GBP pp
Grand Suite	£17635 GBP pp

### ADDITIONAL CHARGES:

Port Charges. From 360 AUD pp



www.small-cruise-ships.com

01432 507 280 (within UK)

info@small-cruise-ships.com | small-cruise-ships.com