



The Small Cruise  
Ship Collection

[www.small-cruise-ships.com](http://www.small-cruise-ships.com)

[small-cruise-ships.com](http://small-cruise-ships.com)

[info@small-cruise-ships.com](mailto:info@small-cruise-ships.com)

## **SOUTH AFRICA AND NAMIBIA BY SEA: AROUND THE CAPE OF GOOD HOPE — WITH SMITHSONIAN JOURNEYS**

In alliance with Smithsonian Journeys. \_This cruise is part of a collection of PONANT voyages that are specially-tailored for English-speaking travelers who want to engage with the world. In addition to the usual elements of the PONANT experience, the listed price for these voyages includes transfers to and from the ship, talks and discussions aboard ship by world class experts, and a shore excursion or activity in each port of call that encourages guests to embrace the sights, sounds, tastes, and smells of the local environment and culture.\_ This voyage along the southern coast of South Africa can be thought of as an expedition in two parts. The first five days, from Durban to Gqeberha (formerly Port Elizabeth), are devoted to what might be called a 'safari by sea' as you explore the great game parks of the Eastern Cape, encountering elephants, lions, leopards, rhinos, and a host of other animals, including an amazing variety of bird species. The second part, focused on Cape Town and its surroundings, explores the natural beauty of the Cape Peninsula and the vineyards and whitewashed farmhouses of Stellenbosch, while also providing opportunities to delve into the city's role in the struggle against apartheid and the ongoing work of building a multi-racial society. From Durban, begin with a day at sea, attending lectures and preparing for the experiences that lie ahead, before calling in East London. Here, your choice of excursions includes two private game reserves , both showcasing the wildlife of South Africa's Eastern Cape; a visit to an authentically reconstructed Xhosa village , for performances of traditional dance and displays of Xhosa handicrafts; or exploration of the fascinating East London Museum , which played a crucial role in discovering and

The Small Cruise  
Ship Collection

[www.small-cruise-ships.com](http://www.small-cruise-ships.com)

**01432 507 280** (within UK)

[info@small-cruise-ships.com](mailto:info@small-cruise-ships.com) | [small-cruise-ships.com](http://small-cruise-ships.com)

# The Small Cruise Ship Collection

www.small-cruise-ships.com

small-cruise-ships.com

info@small-cruise-ships.com

identifying fossil footprints that are the earliest evidence of *\_homo sapiens\_* in Africa. Your next stop is Port Elizabeth, now officially known as Gqeberha, where *\_Le Bougainville\_* remains docked for two full days, allowing for extensive exploration of the many varied game reserves in the surrounding countryside. Two of these focus on particular species--the Addo Elephant Park, home to 450 of these endangered animals, and the Bellevue Forest Reserve, which offers the unique experience of a 'walking safari' among giraffes. The other game reserves, all of which are actively involved in conservation efforts, provide possibilities for viewing the "big five" -- lion, elephant, rhino, buffalo, and leopard--in a variety of environments ranging from bushveld and grasslands to coastal forests. They are also home to an abundance of other wildlife, including zebra, hippo, cheetah, warthog, and hyena, as well as myriad bird species. A day at sea provides an opportunity to relax and recharge before you reach cosmopolitan Cape Town, South Africa's oldest city, where, just as in Gqeberha, your ship will be in port for two days. Options for activities ashore include panoramic drives on the Cape Peninsula--one a full day excursion along the entire length of the Peninsula, with stops at the Cape of Good Hope Nature Reserve and at Kirstenbosch National Botanical Garden; and another focusing on the northern end of the Peninsula around Hout Bay, including the world-famous Chapman's Peak Drive. A tour of the city center includes Company Gardens, the South African Museum, Desmond Tutu's St. George's Cathedral, and the Truth to Power exhibit that chronicles the fight against apartheid. You may visit Robben Island, home to the prison that housed political opponents of apartheid including Nelson Mandela, designated a World Heritage Site in 1999. You may venture into the wine country east of Cape Town and explore the lovely town of Stellenbosch and enjoy a tasting at a local

vineyard. Or you may choose an excursion to the boutiques and artisanal shops of Kalk Bay. Whatever combination of activities you choose, however, you are likely to find yourself at some point atop Cape Town's emblematic Table Mountain. On the final day of the voyage, visit the Namibian town of Lüderitz. Founded as a German colony in 1833, Lüderitz became a true boom town in the early 20th century, when diamonds were discovered nearby. Tour the town and its unmistakably Bavarian legacy, or travel across the desert to the ghost town of Kolmanskop, whose ruins provide a glimpse of what life was like during the region's time at the center of a diamond rush. Your voyage ends the following day in



Walvis Bay.

## ITINERARY

Day 1 - Durban

The Small Cruise Ship Collection

www.small-cruise-ships.com

01432 507 280 (within UK)

info@small-cruise-ships.com | small-cruise-ships.com



## The Small Cruise Ship Collection

[www.small-cruise-ships.com](http://www.small-cruise-ships.com)

[small-cruise-ships.com](http://small-cruise-ships.com)

[info@small-cruise-ships.com](mailto:info@small-cruise-ships.com)

Situated in the **Kwazulu-Natal** region, the cradle of Zulu culture, **Durban** is the third largest city in South Africa and one of Africa's major ports. Between long beaches rocked by the rollers of the Indian Ocean and the skyscrapers dominating the avenues lined with jacarandas, in this multicultural city with African, Indian and colonial influences, the term "rainbow nation" takes on its full dimension. With a rich cultural and historical heritage, with its museums, colonial buildings and picturesque neighbourhoods, it is also known for the fauna and flora that surrounds it.

### Day 2 - At sea

During your journey at sea, make the most of the many services and activities on board. Treat yourself to a moment of relaxation in the spa or stay in shape in the fitness centre. Depending on the season, let yourself be tempted by the swimming pool or a spot of sunbathing. This journey without a port of call will also be an opportunity to enjoy the conferences or shows proposed on board, depending on the activities offered, or to do some shopping in the boutique or to meet the PONANT photographers in their dedicated space. As for lovers of the open sea, they will be able to visit the ship's upper deck to admire the spectacle of the waves and perhaps be lucky enough to observe marine species. A truly enchanted interlude, combining comfort, rest and entertainment.

### Day 3 - East London

### Day 4 - 5 Port Elizabeth

Discover **Port Elizabeth**, one of South Africa's major cities. Located in the province of **Eastern Cape**, Port Elizabeth is nicknamed "The Friendly City", in reference to the hospitality of its inhabitants. Renowned for the beauty of its beaches, Port Elizabeth is also home to rich wild life, particularly in the **Addo National Park**, famous for its elephants. Another key site in the city, the **Donkin reserve** is a public space home to numerous historic monuments. Port Elizabeth also reflects an important aspect of South African history, through both its colonial heritage and its contemporary history marked by the end of apartheid.

### Day 6 - At sea

During your journey at sea, make the most of the many services and activities on board. Treat yourself to a moment of relaxation in the spa or stay in shape in the fitness centre. Depending on the season, let yourself be tempted by the swimming pool or a spot of sunbathing. This journey without a port of call will also be an opportunity to enjoy the conferences or shows proposed on board, depending on the activities offered, or to do some shopping in the boutique or to meet the PONANT photographers in their dedicated space. As for lovers of the open sea, they will be able to visit the ship's upper deck to admire the spectacle of the waves and perhaps be lucky enough to observe marine species. A truly enchanted interlude, combining comfort, rest and entertainment.

### Day 7 - 8 Cape Town

The Small Cruise Ship Collection  
[www.small-cruise-ships.com](http://www.small-cruise-ships.com)

01432 507 280 (within UK)

[info@small-cruise-ships.com](mailto:info@small-cruise-ships.com) | [small-cruise-ships.com](http://small-cruise-ships.com)



## The Small Cruise Ship Collection

[www.small-cruise-ships.com](http://www.small-cruise-ships.com)

[small-cruise-ships.com](http://small-cruise-ships.com)

[info@small-cruise-ships.com](mailto:info@small-cruise-ships.com)

Dynamic and peaceful, cosmopolitan and hip, **Cape Town** offers its visitors a most unique mix. Here, the locals like to say that their city is "the quintessential melting pot of South Africa". Located in the heart of one of the most beautiful bays in the world and dominated by the famous **Table Mountain**, it is graced with extraordinary landscapes including sheer cliffs that plunge into the Atlantic Ocean and vast whitesand beaches. We invite you to discover this incredible city, the South African capital of fashion, the art of living, and gastronomy. Further on, the **Cape of Good Hope** Nature Reserve awaits you and is home to a wide variety of endemic fauna and flora.

Day 9 - At sea

During your journey at sea, make the most of the many services and activities on board. Treat yourself to a moment of relaxation in the spa or stay in shape in the fitness centre. Depending on the season, let yourself be tempted by the swimming pool or a spot of sunbathing. This journey without a port of call will also be an opportunity to enjoy the conferences or shows proposed on board, depending on the activities offered, or to do some shopping in the boutique or to meet the PONANT photographers in their dedicated space. As for lovers of the open sea, they will be able to visit the ship's upper deck to admire the spectacle of the waves and perhaps be lucky enough to observe marine species. A truly enchanted interlude, combining comfort, rest and entertainment.

Day 10 - Lüderitz

Located in Namibia, in southern Africa, **Lüderitz** is a coastal town in the **Karas** region. A former German colony at the gates of the **Namib** desert, this singular town has houses featuring occasionally extravagant colonial architecture. With its sandy streets overlooking the ocean, the small port town gives off a particular atmosphere that will not leave you indifferent. Perched on a granite promontory, the **Felsenkirche Lutheran** church is well worth a visit, as are the **Deutsche Afrika Bank** building and the **Goerke Haus** monument. The **Kolmanskop** ghost town, with its hospital and abandoned colonial houses invaded by the desert sands, looks like it's come straight off a film set.

Day 11 - Walvis Bay

On the **wild coastlines of Namibia**, you will feel the force of the encounter between the infinite dunes of **the oldest desert in the world** and the tempestuous waves of the Atlantic Ocean. A natural port in the curve of a bay formed by an old river delta, **Walvis Bay** is protected from the whims of the ocean by the natural barrier of **Pelican Point**. It is a real refuge for migratory birds, where thousands of **pink flamingos** and Cape cormorants mix with one of the largest **Cape fur seal colonies** in the world. On the Namibian coastline, the seals make the most of the Benguela Current, cold and full of fish, which comes up from the Antarctic.

Please note:

The Small Cruise Ship Collection

[www.small-cruise-ships.com](http://www.small-cruise-ships.com)

01432 507 280 (within UK)

[info@small-cruise-ships.com](mailto:info@small-cruise-ships.com) | [small-cruise-ships.com](http://small-cruise-ships.com)



The Small Cruise  
Ship Collection

[www.small-cruise-ships.com](http://www.small-cruise-ships.com)

[small-cruise-ships.com](http://small-cruise-ships.com)

[info@small-cruise-ships.com](mailto:info@small-cruise-ships.com)

Itineraries are subject to change.



The Small Cruise  
Ship Collection

[www.small-cruise-ships.com](http://www.small-cruise-ships.com)

**01432 507 280** (within UK)

[info@small-cruise-ships.com](mailto:info@small-cruise-ships.com) | [small-cruise-ships.com](http://small-cruise-ships.com)



## The Small Cruise Ship Collection

[www.small-cruise-ships.com](http://www.small-cruise-ships.com)

[small-cruise-ships.com](http://small-cruise-ships.com)

[info@small-cruise-ships.com](mailto:info@small-cruise-ships.com)

## YOUR SHIP: LE BOUGAINVILLE

**YOUR SHIP:** Le Bougainville

**VESSEL TYPE:**

**LENGTH:**

**PASSENGER CAPACITY:**

**BUILT/REFURBISHED:**

Featuring innovative and environmentally-friendly equipment, elegantly designed cabins, spacious suites with large windows, and lounge areas that open onto the outside, this new limited-capacity yacht boasting just 92 cabins and suites will offer you a truly unique cruising experience. As the first ship in a new series that remains true to the Ponant spirit, Le Bougainville will embody the unique atmosphere that is the cruise line's hallmark: a subtle blend of refinement, intimacy and comfort. Aboard this ship that flies the French flag, you will experience the incomparable pleasure of an intimate cruise, with the possibility of exploring an ever-increasing range of destinations in an ethnic-chic ambiance with luxury service. Experience a luxurious setting where the accent is on authenticity and passion for travel. **RESTAURANTS** As it is an essential part of French culture, gastronomy will naturally have pride of place aboard this new ship. Through its two restaurants, Le Bougainville will invite you on a journey to elegance and epicureanism. In a relaxed atmosphere, a first dining area located on Deck 3 and able to seat 70 will serve grilled meats daily, along with a variety of salads and desserts. To the back of Deck 4, you will find a 260 m<sup>2</sup> panoramic restaurant which can accommodate all of

our passengers in a single sitting. Designed differently to that on our other ships, this dining area, which opens onto the outside, will have a buffet of salads, desserts and cheeses at your disposal. Our discreet and attentive crew will provide table service for hot meals. **PUBLIC AREAS** Like Le Boreal and its sisterships, Le Bougainville has many common areas that are designed and equipped to meet all of your needs while preserving the intimacy of each passenger. A 140 m<sup>2</sup> reception area includes: A reception/concierge desk, An excursions desk, The ship's administrative services, The sales office, manned by our Guest Relations Officer, Our 50 m<sup>2</sup> boutique which sells clothing, jewellery, beauty products, postcards and various accessories, Toilets accessible to passengers with reduced mobility. A new hydraulic platform with adjustable height provides: Easier boarding than on any other cruise ship, Easier Zodiac embarkation and disembarkation for expeditions, Easier access to the sea for swimming and practising various water sports such as kayaking or paddle-boarding. A pool deck offering: A pool with a panoramic view, equipped with a counter-current swimming system, A pleasant solarium, An outdoor bar and lounge with armchairs and sofas. A 200 m<sup>2</sup> main lounge which can accommodate all of our passengers to share convivial moments and to host activities organised during the day or evening. Lastly, a theatre that seats 188, equipped with: The latest sound and lighting technology, A LED wall as the stage backdrop, for the projection of high-resolution images and videos. Please click the following links to read more about Ponant and the other Ponant

The Small Cruise Ship Collection

[www.small-cruise-ships.com](http://www.small-cruise-ships.com)

01432 507 280 (within UK)

[info@small-cruise-ships.com](mailto:info@small-cruise-ships.com) | [small-cruise-ships.com](http://small-cruise-ships.com)



The Small Cruise Ship Collection  
www.small-cruise-ships.com

small-cruise-ships.com info@small-cruise-ships.com



cruise ships.

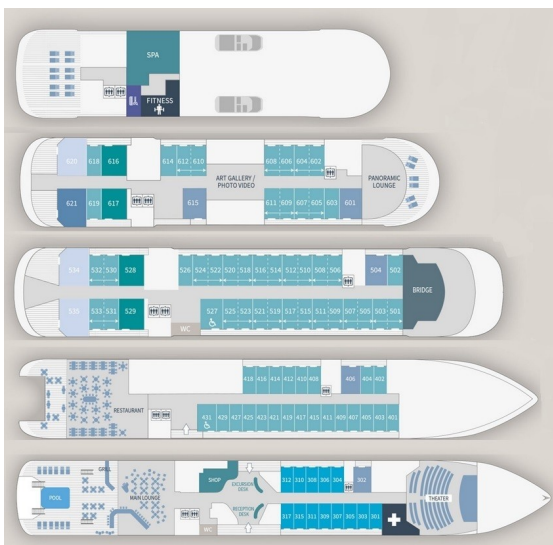
# The Small Cruise Ship Collection

www.small-cruise-ships.com

small-cruise-ships.com

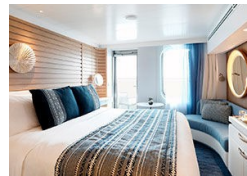
info@small-cruise-ships.com

## INSIDE YOUR SHIP

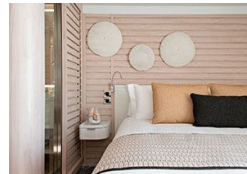


- Owner's Suite Deck 6
- Privilege Suites Deck 5-6
- Grand Deluxe Suites Deck 5-6
- Prestige Suites Deck 5-6
- Deluxe Suites Deck 5-6
- Prestige Cabins Deck 4-5-6
- Deluxe Cabins Deck 3

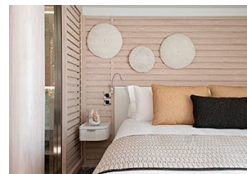
### Deluxe Stateroom



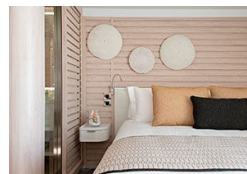
### Deluxe Suite Deck 3



### Deluxe Suite Deck 4



### Deluxe Suite Deck 5



### Deluxe Suite Deck 6

### Grand Deluxe Suite Deck 5

### Grand Deluxe Suite Deck 6

### Prestige Deck 4

### Prestige Deck 5

### Prestige Deck 5 Suite

### Prestige Deck 6

### Prestige Deck 6 Suite

### Privilege Suite Deck 5

### Privilege Suite Deck 6

The Small Cruise Ship Collection

www.small-cruise-ships.com

01432 507 280 (within UK)

info@small-cruise-ships.com | small-cruise-ships.com





# The Small Cruise Ship Collection

[www.small-cruise-ships.com](http://www.small-cruise-ships.com)

[small-cruise-ships.com](http://small-cruise-ships.com)

[info@small-cruise-ships.com](mailto:info@small-cruise-ships.com)

## PRICING

19-Mar-2026 to 29-Mar-2026

Privilege Suite Deck 5	£13355 GBP pp
Prestige Deck 4	£5915 GBP pp
Grand Deluxe Suite Deck 5	£14659 GBP pp
Deluxe Suite Deck 3	£9015 GBP pp
Deluxe Stateroom	£5355 GBP pp
Deluxe Suite Deck 5	£9015 GBP pp
Privilege Suite Deck 6	£13355 GBP pp
Grand Deluxe Suite Deck 6	£14659 GBP pp
Deluxe Suite Deck 6	£9015 GBP pp
Prestige Deck 5	£6195 GBP pp
Prestige Deck 5 Suite	£12115 GBP pp
Deluxe Suite Deck 4	£9015 GBP pp
Prestige Deck 6 Suite	£12735 GBP pp
Prestige Deck 6	£6535 GBP pp