

The Small Cruise Ship Collection

www.small-cruise-ships.com

small-cruise-ships.com

info@small-cruise-ships.com

SOUTH ATLANTIC SEMI-CIRCUMNAVIGATION

On this stunning cruise, gaze at spectacular glaciers and icebergs as we sail from Ushuaia to the icy wilderness of South Shetlands. Immerse in the magnificent landscapes of Antarctica. Meet Adelle penguins and downy snow petrels at South Orkneys. Explore beautiful South Georgia and its world's largest macaroni penguin population. Observe some of the world's rarest animals on Gough Island and the volcanic islands of Tristan da Cunha. End your epic voyage in Cape Town with memories you'll treasure forever.



ITINERARY

DAY 1 - 2 Overnight in Buenos Aires then fly to USHUAIA

Ushuaia is the gateway to the White Continent. Found at the southernmost tip of South America in Argentinian Patagonia, the city is often described as “the End of the World”. The city’s mountain backdrop rises above the harbour and entrance to the Beagle Channel. The town itself is walkable and has a few small museums as well as pubs, restaurants and cafes - a good place to try Patagonian lamb cooked over open fire pits.

DAY 3-4 AT SEA

You can spend your day at sea enjoying the many facilities available. Head to the sauna, get in a workout in the state-of-the-art gym or relax in the jacuzzi whilst taking in incredible views along the way. If you prefer to learn a little more about your surroundings, listen to an informative talk or have a chat with one of our knowledgeable on-board experts.

DAY 5 SOUTH SHETLAND ISLANDS

The Small Cruise Ship Collection

www.small-cruise-ships.com

01432 507 280 (within UK)

info@small-cruise-ships.com | small-cruise-ships.com



The Small Cruise Ship Collection

www.small-cruise-ships.com

small-cruise-ships.com

info@small-cruise-ships.com

While the South Shetlands' proximity to Antarctica makes the ice-bound sea impassable during winter (April to October), these are the first islands to see snow melt in spring (November) and the slightly warmer temperature means that the fauna is also different from what you see in Antarctica proper. As we go ashore by Zodiac, notice ferns, grasses, lichens and native flora that have more in common with Patagonia than they do with Antarctica.

DAY 6-7 ANTARCTIC PENINSULA

Among captivating glaciers, majestic icebergs and snowy islands, the Antarctic Peninsula is where most visitors to the White Continent will live out their Antarctica dream. The Antarctic Peninsula, the most accessible area of the continent, hosts several scientific bases and some of the most interesting wildlife scenery, such as the extremely photogenic Lemaire Channel. Shore excursions might include Petermann Island, where among Adelie penguins, blue-eyed shags and skuas, huge, lumbering elephant seals haul out.

DAY 8 SOUTH SHETLAND ISLANDS

While the South Shetlands' proximity to Antarctica makes the ice-bound sea impassable during winter (April to October), these are the first islands to see snow melt in spring (November) and the slightly warmer temperature means that the fauna is also different from what you see in Antarctica proper. As we go ashore by Zodiac, notice ferns, grasses, lichens and native flora that have more in common with Patagonia than they do with Antarctica.

DAY 9 SOUTH ORKNEY ISLANDS

Located east of the South Shetland Islands, the South Orkney Islands are rarely visited. Often shrouded in mist, the

archipelago's four islands are surrounded by icebergs and sea ice that often presents a challenge when landing. Unfortunately, the former sealing and whaling industries decimated the islands' populations of sea mammals, however, seal populations have started to make a return. Those lucky enough to make a shore landing can also observe nesting Adélie penguins, gentoo penguins and downy snow petrels.

DAY 10 AT SEA

Days at sea are the perfect chance to relax, unwind and do whatever takes your fancy. So whether that is going to the gym, visiting the spa, trying to spot a whale from the deck, reading a chapter or two, or simply topping up your tan, these blue sea days are the perfect balance to the green days spent exploring on land.

DAY 11-12 SOUTH GEORGIA

Often called the "Galapagos of the Poles", South Georgia has a number of landing sites where you get up close to half a million king penguins or three million breeding pairs of macaroni penguins, making up the largest population in the world. If you are lucky you will also see harrumphing elephant seals - from a distance! We also visit Grytviken, the historic whaling station where legendary British explorer Ernest Shackleton (1874-1922) is buried.

DAY 13-15 AT SEA

Spend your day at sea enjoying your boutique 5-star ship. Treat yourself to a spa day, attend an expert-led onboard lecture or enjoy the ocean views from the deck or the comfort of our Observation Lounge.

DAY 16 GOUGH ISLAND

The Small Cruise Ship Collection

www.small-cruise-ships.com

01432 507 280 (within UK)

info@small-cruise-ships.com | small-cruise-ships.com



The Small Cruise Ship Collection

www.small-cruise-ships.com

small-cruise-ships.com

info@small-cruise-ships.com

Located 1700 Nautical miles from Cape Town, Gough Island is difficult to locate on a map. With just a permanent group of Scientists Gough is definitely one of the most remote inhabited islands on the planet, home also to some of the world's rarest birds: the Gough Moorhen and the Gough Bunting. We hope to spot some migrating whales and other fascinating wildlife in the vicinity of the Atlantic Gem.

DAY 17 TRISTAN DA CUNHA

With barely 250 permanent inhabitants, Tristan da Cunha is far from the beaten path. The island teems with wildlife such as Northern rockhopper penguins, the endangered Tristan Albatross and sea lions while the surrounding upwellings attract vast numbers of Whales and Dolphins.

DAY 18-21 AT SEA

Today as you sail, you'll bask in the endless comforts of your ship. From the deck, marvel at the dramatic sea views. Relax with a nurturing facial treatment or massage in the spa or delve into the ship's learning resources. Or, simply take refuge in your cabin and enjoy the opportunity to rest.

DAY 22-23 CAPE TOWN

Starting our epic journey with one of the most spectacular city sceneries in Africa. Dominated by Table Mountain, Cape town is a cosmopolitan city with plenty of nearby splendid vineyards, wonderful harbour fronts and surprising restaurants where one can indulge on the delicious seafood.

Please Note:

Itinerary changes and surprising experiences are part of expedition cruise life. The world has a habit of amazing us with incredible things when we yield to the unexpected. Join us with

an open mind and a sense of adventure and you'll find that this can pay off in the most rewarding ways.



The Small Cruise Ship Collection

www.small-cruise-ships.com

small-cruise-ships.com

info@small-cruise-ships.com

YOUR SHIP: DIANA

YOUR SHIP: Diana

VESSEL TYPE:

LENGTH:

PASSENGER CAPACITY:

BUILT/REFURBISHED:

Launched in 2023, SH Diana provides elegant and spacious 5-star accommodation for 192 guests in 96 spacious staterooms and suites, the vast majority with large balconies. Operated by an onboard team of 140 she provides a high level of personal service, exploring the Mediterranean and its famous sites of antiquity. Now sit back, relax and take a moment to get to know this amazing new ship, purpose-designed for our unique cultural expedition cruises. Named after the Ancient Roman goddess of light, the moon, hunting and the wilderness, SH Diana been specially designed for worldwide cruising to explore the most inspiring and inaccessible places on earth. Building on the outstanding amenities of her sister ships, she adds a dedicated Multifunctional Room next to the Observation Lounge, a Private Dining Room for special occasions, and two tenders which bring guests a comfortable alternative to Zodiacs for expedition landings. A Polar Class 6 ice-strengthened hull combines with extra-large stabilisers to make your journey as comfortable as possible. SH Diana has been designed for immersive experiences, with extensive outside deck areas, multiple observation points and bright, open and relaxing public spaces with unobstructed views. The pleasure and safety of our

guests is paramount at all times, cared for by our attentive crew and seasoned expedition leaders. Cutting edge hygiene technology protects the health of all on board to the highest standards and includes air conditioning with UV sanitisation systems. SH Diana's 96 staterooms, including 11 suites, are each a superbly comfortable home from home and all feature panoramic sea views, a flame-effect fireplace, original works of art, plush couches, premium pocket sprung mattresses, en-suite bathrooms with glass-enclosed rain showers, and Egyptian cotton towels, bathrobes and sheets. A pillow menu offers customised head and neck comfort during rest, while a large flat screen TV, espresso machine with Illy premium coffee, tea making facilities with the finest Kusmi teas, and a minibar with refreshments enhance relaxation at any time. In-room dining is of course available at all hours. Wheelchair access Guests who use wheelchairs must bring their own, as we have only a small number of wheelchairs stored onboard for emergencies. To ensure ease of movement on the ship, wheelchairs and mobility aids must be no wider than 65cm. All mobility or medical equipment brought on board must be capable of being carried safely and must be declared before sailing. To ensure that all guests can safely evacuate during an emergency, guests requiring a wheelchair can only be accommodated in our ADA-accessible cabins. We offer an Oceanview and a Balcony stateroom on Diana. These staterooms are specifically designed to be completely ADA compliant and have a fully operable wheelchair-access wet unit. Diana has two lifts, serving every passenger deck apart from the Stargazing top deck, which is, therefore, more difficult to access, as are the Aft Marina and

The Small Cruise Ship Collection
www.small-cruise-ships.com

01432 507 280 (within UK)

info@small-cruise-ships.com | small-cruise-ships.com



The Small Cruise Ship Collection

www.small-cruise-ships.com

small-cruise-ships.com

info@small-cruise-ships.com

Swan's Nest forward observation platform. Also, we don't have special equipment to access the swimming pool, jacuzzi, or sauna. Otherwise, the ship is entirely at your disposal. Many of the expeditions ashore in remote places are by Zodiac. Boarding these boats and returning aboard can present challenges for wheelchair users, as can navigating uneven terrain. These challenges are by no means always insurmountable, though, and our highly experienced crew is trained to provide reliable advice and assistance. They will make every effort to ensure wheelchair-using guests enjoy a memorable experience at each destination. Our general guidance, however, is to recommend wheelchair users travel with a companion for their ease and enjoyment. If you prefer to remain aboard, our panoramic interiors and ample open decks ensure an immersive, intimate experience of your inspiring



surroundings.

The Small Cruise Ship Collection

www.small-cruise-ships.com

01432 507 280 (within UK)

info@small-cruise-ships.com | small-cruise-ships.com

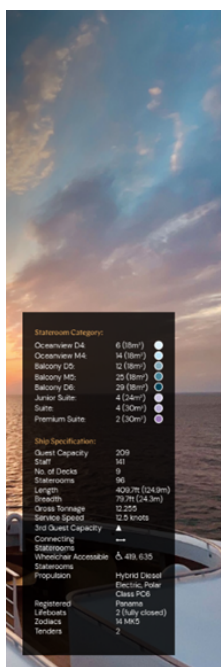
The Small Cruise Ship Collection

www.small-cruise-ships.com

small-cruise-ships.com

info@small-cruise-ships.com

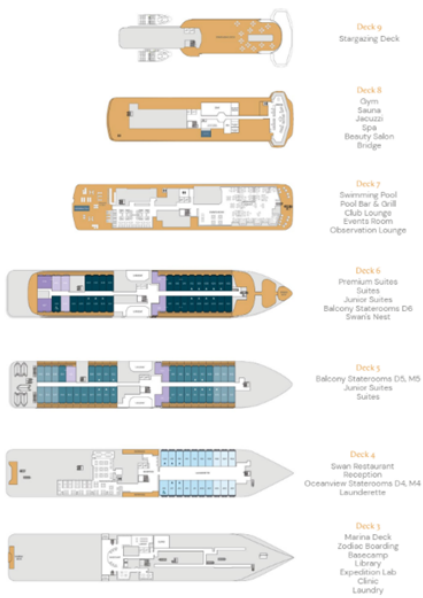
INSIDE YOUR SHIP



Stateroom Category:
 Oceanview D4 6 (88m)
 Oceanview M4 14 (88m)
 Balcony D5 12 (88m)
 Balcony M5 25 (88m)
 Balcony D6 29 (88m)
 Junior Suite 4 (100m)
 Suite 4 (100m)
 Premium Suite 2 (100m)

Ship Specification:
 Guest Capacity 209
 Staff 101
 No. of Decks 9
 Staterooms 98
 Length 400.7m (1243ft)
 Beam 79.9m (243ft)
 Gross Tonnage 12,205
 Service Speed 12.5 knots
 1st Guest Capacity 100

Connecting Staterooms: 5, 49, 635
Wheelchair Accessible Staterooms: 5, 49, 635
Propulsion: Hybrid Diesel
 Electric, Polar Class PC6
 Permits: Panama
 Registered Lifboats: 2 (fully closed)
 Lifeboats: 14 (M/S)
 Tenders: 2



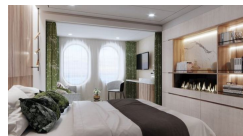
Balcony D5



Balcony M5



Oceanview D4



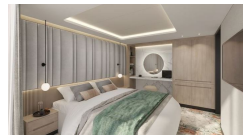
Oceanview M4



Premium Suite



Suite





The Small Cruise Ship Collection

www.small-cruise-ships.com

small-cruise-ships.com

info@small-cruise-ships.com

PRICING

16-Mar-2026 to 06-Apr-2026

Balcony M5	£12944 GBP pp
Balcony D5	£12281 GBP pp
Premium Suite	£20900 GBP pp
Suite	£19115 GBP pp
Oceanview M4	£10343 GBP pp
Oceanview D4	£9833 GBP pp