

The Small Cruise Ship Collection

www.small-cruise-ships.com

small-cruise-ships.com

info@small-cruise-ships.com

SOUTH GEORGIA AND ANTARCTIC PENINSULA: PENGUIN SAFARI

Our South Georgia and Antarctica: Penguin Safari itinerary is the fastest way to get to the seldom visited South Georgia Island while also setting foot on the 7th continent. As we set sail, photograph massive albatross and beautiful pintado petrels as they swoop and soar around the ship, guiding us toward South Georgia. Beaches teeming with king penguins and elephant seals greet us on this fabled island, where we'll pay our respects to famed explorer Sir Ernest Shackleton. Antarctica awaits, with its soaring peaks and staggering expanse. Go further into the Antarctic sea on a Zodiac, experience the rugged peninsula from a sea kayak, undertake an exhilarating hike up a sparkling glacier, or share an endearingly comical moment with an inquisitive gentoo, chinstrap and Adélie penguin. In these ways and countless others, Antarctica will amaze, surprise and delight. Starting in 2021, this itinerary allows you to the opportunity to experience our pioneering new vessel, Ultramarine. This purpose-built vessel is designed to extend the boundaries of polar exploration and offer an unmatched Antarctic experience, including a flightseeing tour you'll never forget and a range of adventure options more extensive than any other ship in its class.



ITINERARY

Day 1 Ushuaia, Argentina

You will begin your journey in Ushuaia, a small but bustling port at the tip of South America. It's the ideal gateway for you to explore the southern extent of Patagonia while preparing for your adventure ahead. Get active in the mountains or enjoy handcrafted chocolate at a café in town.

The Small Cruise Ship Collection

www.small-cruise-ships.com

01432 507 280 (within UK)

info@small-cruise-ships.com | small-cruise-ships.com



The Small Cruise Ship Collection

www.small-cruise-ships.com

small-cruise-ships.com

info@small-cruise-ships.com

Day 2 Embark

Embarkation will occur in the late afternoon, after which your vessel will sail down the historic Beagle Channel, which transects the Tierra del Fuego archipelago in the extreme south of South America. Expect an air of anticipation as you depart!

Days 3 to 6 At Sea

There are many activities to keep you engaged while you are at sea. Learn to identify seabirds that glide alongside the ship, or attend dynamic presentations by your Expedition Team. You will be prepped on safety procedures for Zodiac cruises and shore landings, and also be given instructions for getting the most out of your optional sea kayaking adventures (extra cost), a truly intimate way to experience Antarctica. If conditions are right, the first indication that you are approaching South Georgia is the sight of birds around a group of rocky spires called Shag Rocks. Have your binoculars and cameras ready to capture these rocky spires rising out of the icy ocean waters. Shags and prions often rest here, and due to nutrient rich upwellings around the rocks it can be a good place to keep a lookout for whales.

Days 7 and 8 South Georgia

After enjoying South Georgia from a distance, we'll head toward its numerous beaches to find a bay for your first excursion. Landing sites are varied, largely determined by the weather conditions of your voyage. Whichever sites we visit, they'll provide you with wildlife encounters unrivaled anywhere else on earth. South Georgia is one of the most fertile breeding grounds in the world for sub-Antarctic wildlife, with beaches blanketed with penguins and seals. It won't take you long to realize that you are in a bird paradise, as burrowing seabirds, albatross and petrels can be seen in abundance. You'll find that South Georgia, once a popular base for whalers and sealers, is also

scattered with abandoned relics and evidence of human activity from centuries gone by. Your Expedition Team will help bring those days to life while you visit old whaling stations and enjoy presentations on the South Georgia of then and now. One of the most significant sites you will visit on the island is Grytviken. This settlement is the first whaling stations established in sub-Antarctic waters. Many travelers find that this place has a special appeal, as it is the site of the grave of Sir Ernest Shackleton, one of the most famous Antarctic explorers.

Days 9 and 10 At Sea

Say goodbye to the king penguins, as your next destination is Antarctica! Your days at sea are filled with presentations and workshops led by your Expedition Team, who will prepare you for the wildlife and landscapes that will surround you upon your arrival.

Days 11 to 13 Antarctic Peninsula

The most common reaction upon reaching the White Continent is a sense of reverence and awe. The experience is hard to put into words, since few places are as untouched and enduring as Antarctica. You will discover that Antarctica is a land of extremes. At one moment you'll be overcome with a feeling of complete isolation and silence, and at the next moment you'll be inspired by nature as a calving glacier crashes into a brilliant blue sea or a penguin waddles by to inspect your footwear. Your Expedition Team will take care of you at each excursion, whether you are Zodiac cruising, visiting a historical site or consorting with penguin colonies. Chinstrap, Adélie and gentoo penguins are found here, along with Weddell, fur, crabeater and leopard seals. Keep a lookout for Antarctic whales, such as minke, while on a Zodiac cruise. Each day and each excursion will present a new collection of creatures to delight you and keep

The Small Cruise Ship Collection
www.small-cruise-ships.com

01432 507 280 (within UK)

info@small-cruise-ships.com | small-cruise-ships.com



The Small Cruise Ship Collection

www.small-cruise-ships.com

small-cruise-ships.com

info@small-cruise-ships.com

your camera busy. As exciting as the Zodiac excursions and landings are, perhaps you'll treat yourself to an extra-special Antarctic experience by partaking in an optional paddling excursion (at an extra cost) or cast reason aside and jump into Antarctic waters for the Polar Plunge!

Days 14 and 15 Crossing the Drake Passage

After more than a dozen days of unique wildlife encounters and remarkable landscapes, your journey home begins. Crossing the Drake is your unofficial rite of passage. Spend time on deck watching for seabirds and whales, enjoy presentations by your Expedition Team, or simply relax and reminisce about your experiences.

Day 16 Disembark in Ushuaia

You will arrive in Ushuaia in the morning, which allows for you to continue your adventure onward or catch your flights home.

Please Note:

Embracing the unexpected is part of the legacy – and excitement – of expedition travel. There are no guarantees that we can achieve everything we set out to accomplish. A measure of flexibility is something all of us must bring to a voyage. There are nearly 200 recognized sites in the Antarctic Peninsula and South Shetlands and the places mentioned above may be changed to others equally as interesting.

 The Small Cruise
Ship Collection

www.small-cruise-ships.com

01432 507 280 (within UK)

info@small-cruise-ships.com | small-cruise-ships.com

The Small Cruise Ship Collection

www.small-cruise-ships.com

small-cruise-ships.com

info@small-cruise-ships.com

YOUR SHIP: OCEAN ADVENTURER

YOUR SHIP: Ocean Adventurer

VESSEL TYPE:

LENGTH:

PASSENGER CAPACITY:

BUILT/REFURBISHED:

The 118-passenger Ocean Adventurer, (formerly the Sea Adventurer) is among the very few vessels in the world specifically constructed for expedition voyages to the remote polar regions. Her ice-strengthened hull permits her to glide easily and safely through ice-strewn waters that are not accessible to conventional cruise vessels. She has advanced communications and navigation equipment, and newly installed, state-of-the-art Sperry Gyrofin stabilizers. In 1998 the Adventurer had a \$13 million conversion done in Scandinavia. She is a handsome expedition vessel, done in the style of great ocean liners when ships were ships. With lots of varnished wood, brass, and wooden decks, the ship has all new outside cabins, with lower beds and private facilities. There is a Main Lounge, bar, Clipper Club, library/card room, gymnasium and gift shop. A multi-national staff serves American and Continental cuisine. The ship has a fleet of 10 Zodiacs and a special loading platform. An ice class rating of A-1 allows the Clipper Adventurer to go to places larger cruise ships can only dream of, and she does it in comfort and style unsurpassed by other vessels her size. Cabins: All cabins have a window with outside view. Each has private facilities. Cabins and amenities 61 outside cabins

with exterior views and private facilities. Decks 4 and 5 have exterior access, with outside seating. Window-lined dining room on Deck 4 with unreserved seating. Lounge/Presentation Room. 2 bars. Library. Gift shop. 4 hour beverage station. Ship-to-shore satellite communications with email, and wireless, Internet access. Clinic with licensed doctor. Exercise room. Deck Plan for some trips may vary, please ask



for details.

The Small Cruise Ship Collection
www.small-cruise-ships.com

01432 507 280 (within UK)

info@small-cruise-ships.com | small-cruise-ships.com

The Small Cruise Ship Collection

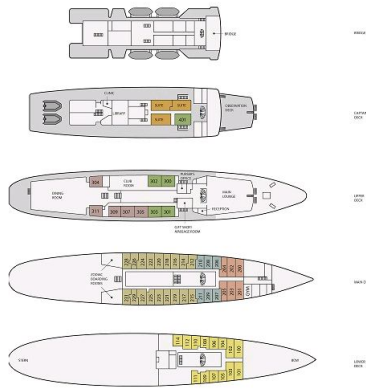
www.small-cruise-ships.com

small-cruise-ships.com

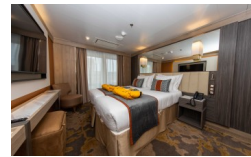
info@small-cruise-ships.com

INSIDE YOUR SHIP

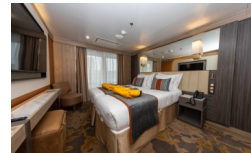
- Triple Cabin 2 lower and 1 upper berth, private facilities, porthole
- Lower Deck Twin Cabin 2 lower berths, private facilities, porthole
- Main Deck Twin Porthole Cabin 2 lower berths, private facilities, porthole
- Main Deck Twin Window Cabin 2 lower berths, private facilities, 2 windows
- Superior Cabin 2 lower berths, private facilities, windows
- Deluxe Cabin 2 lower berths, private facilities, windows
- Suite 2 lower berths, windows - private facilities, bathtub in 403, shower in the remainder



Deluxe



Deluxe. From



Infinity Suite. From

Main Deck Twin Porthole

Owner's Suite

Suite

Superior Suite

Triple Cabin

Veranda Suite

Deluxe

Infinity Suite

Lower Deck Twin

Main Deck Twin Window

Owner's Suite. From

Superior Cabin

Superior Suite. From

Triple Cabin. From

Veranda Suite. From

The Small Cruise Ship Collection

www.small-cruise-ships.com

small-cruise-ships.com

info@small-cruise-ships.com

PRICING

06-Jan-2025 to 21-Jan-2025

Veranda Suite	£21879 GBP pp
Superior Suite	£28458 GBP pp
Infinity Suite	£23001 GBP pp
Deluxe	£30651 GBP pp
Owner's Suite	£32844 GBP pp
Triple Cabin	£18615 GBP pp

16-Feb-2025 to 03-Mar-2025

Main Deck Twin Porthole	£19329 GBP pp
Main Deck Twin Window	£21165 GBP pp
Superior Cabin	£22287 GBP pp
Triple Cabin	£15351 GBP pp
Deluxe	£22287 GBP pp
Owner's Suite	£31722 GBP pp
Suite	£29580 GBP pp
Lower Deck Twin	£18615 GBP pp

16-Feb-2025 to 05-Mar-2025

Studio Veranda Stateroom	£21624 GBP pp
Studio Veranda Single	£32232 GBP pp
Explorer Suite	£35751 GBP pp
Owners Suite	£37332 GBP pp
Deluxe Veranda Forward Stateroom	£23205 GBP pp
Studio Double	£20451 GBP pp
Deluxe Veranda Stateroom	£24786 GBP pp
Royal Veranda Stateroom	£30651 GBP pp
Junior Suite	£34578 GBP pp
Grand Veranda Stateroom	£26316 GBP pp
Deluxe Veranda Middle Stateroom	£24378 GBP pp
Studio Single	£26316 GBP pp



The Small Cruise Ship Collection

www.small-cruise-ships.com

small-cruise-ships.com

info@small-cruise-ships.com

PRICING

24-Jan-2026 to 10-Feb-2026

Junior Suite	£29781 GBP pp
Deluxe Veranda Stateroom	£24579 GBP pp
Studio Double	£20295 GBP pp
Deluxe Veranda Middle Stateroom	£23865 GBP pp
Royal Veranda Stateroom	£26670 GBP pp
Grand Veranda Stateroom	£25956 GBP pp
Deluxe Veranda Forward Stateroom	£22692 GBP pp
Studio Veranda Stateroom	£21468 GBP pp
Owners Suite	£33351 GBP pp
Explorer Suite	£31005 GBP pp
Studio Single	£25956 GBP pp

01-Feb-2026 to 18-Feb-2026

Owner's Suite. From	£39420 GBP pp
Superior Suite. From	£34218 GBP pp
Deluxe. From	£36870 GBP pp
Infinity Suite. From	£26262 GBP pp
Veranda Suite. From	£26262 GBP pp
Triple Cabin. From	£22335 GBP pp