



## SOUTHERN AFRICA AND THE SKELETON COAST

Set sail on a captivating luxury cruise along Namibia's Skeleton Coast, a journey beginning in the vibrant city of Cape Town. Your voyage will navigate the diverse coastline of Namibia, cruise through the serene Atlantic, and conclude in Angola's charming capital, Luanda, reflecting a blend of historical depth and emerging modernism. Discover Walvis Bay's wetlands teeming with flamingos and Cape fur seals, and absorb the haunting beauty of Angola's remote Ilha Baia dos Tigres and Namibe's colonial remnants. Engage in unforgettable experiences as you cruise: ascend Lion's Head at sunrise, explore marine life on a wildlife cruise in Walvis Bay, or delight in a wine tasting amid Stellenbosch's vineyards. Whether you opt for a 4x4 desert expedition or a relaxing spa day, each activity enhances this luxurious Skeleton Coast exploration.



### ITINERARY

Days 1 & 2 - Cape Town

Between mountains and the ocean, Cape Town is a vibrant, multicultural city with a lively waterfront featuring seafood restaurants, shopping and attractions. A cable car transports visitors to distinctive Table Mountain with sweeping views. Boats head to Robben Island, where Nelson Mandela was incarcerated. Boulders Beach is home to African penguins, and



## The Small Cruise Ship Collection

[www.small-cruise-ships.com](http://www.small-cruise-ships.com)

[small-cruise-ships.com](http://small-cruise-ships.com)

[info@small-cruise-ships.com](mailto:info@small-cruise-ships.com)

world-class Stellenbosch vineyards offer wine tastings amid Cape Dutch architecture.

### Day 3 - Saldanha Bay

Langebaan Lagoon, a water sports and fishing paradise, is renowned for its wetlands and tidal mud flats, home to flamingos, the world's largest breeding colony of black harriers, and thousands of migratory birds. The West Coast National Park protects the lagoon and is home to the Slow Five--tortoises, whales, sand sharks, porcupines and dune moles. The Fossil Park has the oldest modern human footprint, Eve's Footprint, over 100,000 years old.

### Day 4 - Day at sea

Sea days are rarely dull. Take the time to sit back and let the world go by. The ship's observation decks provide stunning views of the passing ocean. A day at sea gives you the opportunity to mingle with other passengers and share your experiences of this incredible trip or head to our library which is stocked full of reference books. Get an expert's view in one of our on-board lectures or perhaps perfect your photography skills with invaluable advice from our onboard professional photographers

### Day 5 - Luderitz

Luderitz, with a unique West African-German culture, graces Namibia's coast on a windswept, rocky hillside beside the bay.

Formerly a German colony, the town preserves colonial buildings in German Art Nouveau style, including Goerke Haus mansion and the Felsenkirche Lutheran Church built into the rocks. Beyond town, the desolate Namib Desert extends along the coast, home to Kolmanskop ghost town, wild horses and tales of remarkable survival.

### Days 6 & 7 - Walvis Bay

Walvis Bay offers shelter to thousands of flamingos in its natural tidal lagoon and protected wetlands. At the remote Pelican Point sand spit, a Cape fur seal colony hauls out, and marine wildlife like whales and dolphins swim by. Locally caught fish and German dishes are available in the harbour. Optional tours include dune jeep safaris, meeting the locals in Mondesa township, and flights or hot air balloons over the desert.

### Day 8 - Day at sea

Days at sea are the perfect chance to relax, unwind and do whatever takes your fancy. So whether that is going to the gym, visiting the spa, trying to spot a whale from the deck, reading a chapter or two, or simply topping up your tan, these blue sea days are the perfect balance to the green days spent exploring on land

### Day 9 - Ilha Baia Dos Tigres

Far from the crowds, the abandoned Ilha Baia dos Tigres, or Tiger Island, in Angola off Namibe Province's coast offers a





## The Small Cruise Ship Collection

[www.small-cruise-ships.com](http://www.small-cruise-ships.com)

[small-cruise-ships.com](http://small-cruise-ships.com)

[info@small-cruise-ships.com](mailto:info@small-cruise-ships.com)

deserted island setting. Originally a peninsula, it became an island overnight when the ocean breached the isthmus and residents abandoned their homes. Nestled in clear blue waters, the island is a pristine oasis surrounded by secluded beaches, and vast dunes, renowned for desolate landscapes and eerie ghost towns.

### Day 10 - Namibe

Now known as Mocamedes, the port of Namibe was settled by the Portuguese in the 19th century. This early slave trading town is the entrance to the arid Namib desert, with towering sand dunes and home to the ancient welwitschia mirabilis trees, each over 2,000 years old and threatened by climate change. Near the port, the old town has colourful colonial architecture, beaches and historic buildings, including an abandoned spaceship-like cinema.

### Day 11 - Day at sea

Today as you sail, you'll bask in the endless comforts of your ship. From the deck, marvel at the dramatic sea views. Relax with a nurturing facial treatment or massage in the spa or delve into the ship's learning resources. Or, simply take refuge in your cabin and enjoy the opportunity to rest.

### Day 12 - Luanda

As Angola emerges from colonial rule and a long Civil War, its capital, Luanda, is evolving into a forward-looking city with a rich

heritage. Landmarks include Gustave Eiffel's Iron Palace and the 16th-century Sao Miguel Fortress. Luanda's historic upper town, Cidade Alta, features pink colonial buildings, the Presidential Palace and ministerial houses. Ilha do Cabo shows Luanda's modern side with trendy seaside restaurants and bars.



## The Small Cruise Ship Collection

[www.small-cruise-ships.com](http://www.small-cruise-ships.com)

[small-cruise-ships.com](http://small-cruise-ships.com)

[info@small-cruise-ships.com](mailto:info@small-cruise-ships.com)

## YOUR SHIP: DIANA

**YOUR SHIP:** Diana

**VESSEL TYPE:**

**LENGTH:**

**PASSENGER CAPACITY:**

**BUILT/REFURBISHED:**

Launched in 2023, SH Diana provides elegant and spacious 5-star accommodation for 192 guests in 96 spacious staterooms and suites, the vast majority with large balconies. Operated by an onboard team of 140 she provides a high level of personal service, exploring the Mediterranean and its famous sites of antiquity. Now sit back, relax and take a moment to get to know this amazing new ship, purpose-designed for our unique cultural expedition cruises. Named after the Ancient Roman goddess of light, the moon, hunting and the wilderness, SH Diana has been specially designed for worldwide cruising to explore the most inspiring and inaccessible places on earth. Building on the outstanding amenities of her sister ships, she adds a dedicated Multifunctional Room next to the Observation Lounge, a Private Dining Room for special occasions, and two tenders which bring guests a comfortable alternative to Zodiacs for expedition landings. A Polar Class 6 ice-strengthened hull combines with extra-large stabilisers to make your journey as comfortable as possible. SH Diana has been designed for immersive experiences, with extensive outside deck areas, multiple observation points and bright, open and relaxing public spaces with unobstructed views. The pleasure and safety of our

guests is paramount at all times, cared for by our attentive crew and seasoned expedition leaders. Cutting edge hygiene technology protects the health of all on board to the highest standards and includes air conditioning with UV sanitisation systems. SH Diana's 96 staterooms, including 11 suites, are each a superbly comfortable home from home and all feature panoramic sea views, a flame-effect fireplace, original works of art, plush couches, premium pocket sprung mattresses, en-suite bathrooms with glass-enclosed rain showers, and Egyptian cotton towels, bathrobes and sheets. A pillow menu offers customised head and neck comfort during rest, while a large flat screen TV, espresso machine with Illy premium coffee, tea making facilities with the finest Kusmi teas, and a minibar with refreshments enhance relaxation at any time. In-room dining is of course available at all hours. Wheelchair access Guests who use wheelchairs must bring their own, as we have only a small number of wheelchairs stored onboard for emergencies. To ensure ease of movement on the ship, wheelchairs and mobility aids must be no wider than 65cm. All mobility or medical equipment brought on board must be capable of being carried safely and must be declared before sailing. To ensure that all guests can safely evacuate during an emergency, guests requiring a wheelchair can only be accommodated in our ADA-accessible cabins. We offer an Oceanview and a Balcony stateroom on Diana. These staterooms are specifically designed to be completely ADA compliant and have a fully operable wheelchair-access wet unit. Diana has two lifts, serving every passenger deck apart from the Stargazing top deck, which is, therefore, more difficult to access, as are the Aft Marina and

The Small Cruise Ship Collection  
[www.small-cruise-ships.com](http://www.small-cruise-ships.com)

01432 507 280 (within UK)

[info@small-cruise-ships.com](mailto:info@small-cruise-ships.com) | [small-cruise-ships.com](http://small-cruise-ships.com)



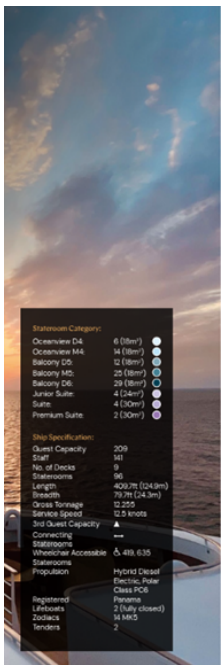


Swan's Nest forward observation platform. Also, we don't have special equipment to access the swimming pool, jacuzzi, or sauna. Otherwise, the ship is entirely at your disposal. Many of the expeditions ashore in remote places are by Zodiac. Boarding these boats and returning aboard can present challenges for wheelchair users, as can navigating uneven terrain. These challenges are by no means always insurmountable, though, and our highly experienced crew is trained to provide reliable advice and assistance. They will make every effort to ensure wheelchair-using guests enjoy a memorable experience at each destination. Our general guidance, however, is to recommend wheelchair users travel with a companion for their ease and enjoyment. If you prefer to remain aboard, our panoramic interiors and ample open decks ensure an immersive, intimate experience of your inspiring



surroundings.

# INSIDE YOUR SHIP



Stateroom Category:

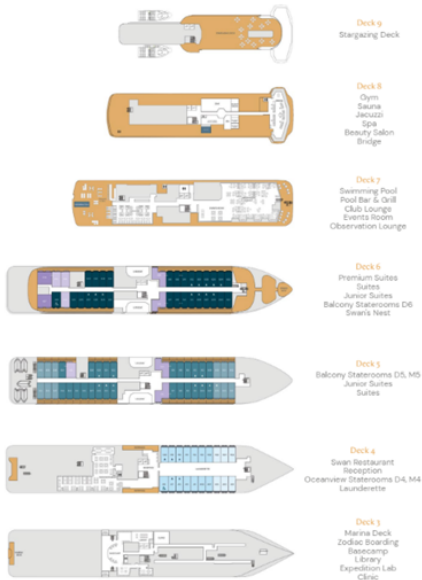
- Oceanview D4: 6 (88m²)
- Oceanview M4: 14 (88m²)
- Balcony D5: 12 (88m²)
- Balcony M5: 25 (88m²)
- Balcony D6: 24 (88m²)
- Junior Suite: 4 (140m²)
- Suite: 4 (140m²)
- Premium Suite: 2 (100m²)

Ship Specifications:

- Guest Capacity: 209
- Crew: 101
- No. of Decks: 8
- Staterooms: 98
- Length: 400.7m (1243ft)
- Breadth: 39.1m (124ft)
- Gross Tonnage: 12,205
- Service Speed: 12.5 knots
- 1st Guest Capacity: 100
- Connecting: 100
- Staterooms: 98
- Wheelchair Accessible: 10
- Staterooms: 98
- Population: 100

Registered:

- Lithuania
- 2 (fully closed)
- 14 MMSI
- 2



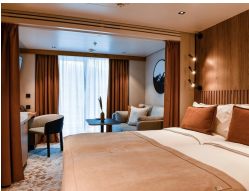
Balcony D5 - from



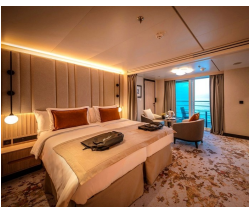
Balcony D6 - from



Balcony M5 - from



Junior Suite - from



Oceanview D4 - from Premium Suite

Oceanview M4 - from Suite - from





The Small Cruise  
Ship Collection

[www.small-cruise-ships.com](http://www.small-cruise-ships.com)

[small-cruise-ships.com](http://small-cruise-ships.com)

[info@small-cruise-ships.com](mailto:info@small-cruise-ships.com)

## PRICING

25-Mar-2026 to 05-Apr-2026

Suite - from	£14480 GBP pp
Junior Suite - from	£12380 GBP pp
Balcony D6 - from	£10780 GBP pp
Premium Suite	£16580 GBP pp
Balcony M5 - from	£10380 GBP pp
Balcony D5 - from	£9880 GBP pp
Oceanview M4 - from	£8680 GBP pp
Oceanview D4 - from	£8280 GBP pp



The Small Cruise  
Ship Collection

[www.small-cruise-ships.com](http://www.small-cruise-ships.com)

01432 507 280 (within UK)

[info@small-cruise-ships.com](mailto:info@small-cruise-ships.com) | [small-cruise-ships.com](http://small-cruise-ships.com)