

The Small Cruise Ship Collection

www.small-cruise-ships.com

small-cruise-ships.com

info@small-cruise-ships.com

SUNSHINE AND CULTURE INDULGENCE - A SAILING FROM BARCELONA TO MÁLAGA

Sail along the Spanish coast, exploring historic Roman towns and vibrant cultural hubs. Begin in Barcelona and journey to Tarragona, known for its stunning Roman amphitheater overlooking the sea. Discover Palma de Mallorca's blend of historic landmarks and modern attractions, including the Cathedral and Royal Palace. In Valencia, experience a mix of Gothic architecture and Calatrava's modernism. Conclude in Cartagena, where ancient ruins and Art Nouveau charm offer a rich historical tapestry.



ITINERARY

Day 1 Barcelona, Spain

Departure 7:00 pm

Barcelona revels in contrasts. Many enthuse over the beautiful elegant squares and boulevards, while others look for medieval romance in the Gothic quarter. Some love the artistic treasures in the Picasso Museum or the Joan Miro Foundation, but for

The Small Cruise Ship Collection

www.small-cruise-ships.com

01432 507 280 (within UK)

info@small-cruise-ships.com | small-cruise-ships.com



The Small Cruise Ship Collection

www.small-cruise-ships.com

small-cruise-ships.com

info@small-cruise-ships.com

most people Barcelona is the capital of Catalan Art Nouveau and its glory is epitomised in the spectacular Palau de la Musica. At every turn you encounter the playfully opulent creations of architect Antonio Gaudi. His exuberant fantasies are evident in the numerous houses, idiosyncratic parks and the famous uncompleted Sagrada Familia cathedral which he created.

Day 2 Tarragona, Spain

Arrival 8:00 am, Departure 10:00 pm

Welcome to ancient times! Roman history comes alive in the Catalan port city of Tarragona. It all began in 218 B.C.: that was when the Romans conquered the city, gave it the name Tarraco and began to build monuments that are now part of the UNESCO World Heritage. If you walk along the old city wall and visit the amphitheatre, the triumphal arch and the forum, you will feel as if you have been transported back thousands of years into the past. A little younger, but equally worth seeing is the Cathedral de Santa Maria: its construction lasted from 1171 to 1331, which is why it combines Romanesque and Gothic style elements.

Day 3 Palma de Mallorca, Spain

Arrival 5:00 pm

Majorca's beautiful capital is an elegant city and its picturesque old town and architectural mix of Arab, Catalan and Art Nouveau elements are part of its success story. In the center you will be

lured by shops behind splendid facades, and cafes and bars set on beautiful squares invite you to stay a while. Not far from the sophisticated marina you will find the dignified cathedral, affectionately known as "La Seu" for short. With pure Gothic beginnings, none other than Antonio Gaudi created part of its interior at the start of the 20th century.

Day 4 Palma de Mallorca, Spain

Departure 1:30 pm

Majorca's beautiful capital is an elegant city and its picturesque old town and architectural mix of Arab, Catalan and Art Nouveau elements are part of its success story. In the center you will be lured by shops behind splendid facades, and cafes and bars set on beautiful squares invite you to stay a while. Not far from the sophisticated marina you will find the dignified cathedral, affectionately known as "La Seu" for short. With pure Gothic beginnings, none other than Antonio Gaudi created part of its interior at the start of the 20th century.

Day 5 Valencia, Spain

Arrival 5:00 pm

On one corner its centuries old and around the next totally modern - Valencia is everything all at once. Today the beautiful old town and the old silk market "La Lonja de la Seda", which is a UNESCO World Heritage Site, still bear witness to the city's wealth in the Middle Ages. A brand new part of the city is situated in a drained river bed and has avant-garde buildings

The Small Cruise Ship Collection

www.small-cruise-ships.com

01432 507 280 (within UK)

info@small-cruise-ships.com | small-cruise-ships.com



The Small Cruise Ship Collection

www.small-cruise-ships.com

small-cruise-ships.com

info@small-cruise-ships.com

including a futuristic opera house, the largest aquarium in Europe, a botanical garden and a public park. Valencia is one of the few cities that has a heritage of over 2,000 years and is also so intriguingly combined with the future. And no other city in Europe can proudly make the claim that the America's Cup has already taken place twice right on its front door.

Day 6 Valencia, Spain

Departure 2:00 pm

On one corner its centuries old and around the next totally modern - Valencia is everything all at once. Today the beautiful old town and the old silk market "La Lonja de la Seda", which is a UNESCO World Heritage Site, still bear witness to the city's wealth in the Middle Ages. A brand new part of the city is situated in a drained river bed and has avant-garde buildings including a futuristic opera house, the largest aquarium in Europe, a botanical garden and a public park. Valencia is one of the few cities that has a heritage of over 2,000 years and is also so intriguingly combined with the future. And no other city in Europe can proudly make the claim that the America's Cup has already taken place twice right on its front door.

Day 7 Cartagena, Spain

Arrival 1:30 pm, Departure 7:00 pm

An important port as long ago as Carthaginian and Roman times, Cartagena can look back on an eventful history. The "La Manga" headland, over 20 kilometers (12 miles), is a

geographical curiosity which divides the long sandy beach of the "Mar Menor" salt water lagoon from that of the Mediterranean. Inland, the Fuensanta convent is mainly famous for a vision of the Virgin Mary which appeared there around 200 years ago and sits high up above the town of Murcia. It affords a delightful view over this lively university town. The huge Cathedral of Murcia was built in 1394 on the former site of a Moorish mosque.

Day 8 Day under full sails

Climbing the rigging, untying ropes, setting sails - today is all about sailing. Time to lean back and relax in the deck chair and watch the passionate crew hoisting the sails by hand.

Day 9 Málaga, Spain

Arrival 8:00 am

Malaga has spruced itself up. In 2003, the Museo Picasso opened in a 16th century Renaissance palace and is dedicated to the artist's extensive life's work. This historic old city invites you to take a stroll and its buildings gleam like new. And above everything towers the Alcazaba, a mighty walled fortress. The port was completely redesigned when the city was opened to the sea and you can now take a lovely stroll along the promenade. In Malaga's hinterland you can see the most beautiful aspects of traditional Andalusia. From a distance the typical Andalusian villages look like white dabs of paint shining out from the brown of the barren mountain landscape.

The Small Cruise Ship Collection

www.small-cruise-ships.com

01432 507 280 (within UK)

info@small-cruise-ships.com | small-cruise-ships.com



The Small Cruise Ship Collection

www.small-cruise-ships.com

small-cruise-ships.com

info@small-cruise-ships.com

Please note:

Itineraries are subject to change.



The Small Cruise Ship Collection

www.small-cruise-ships.com

01432 507 280 (within UK)

info@small-cruise-ships.com | small-cruise-ships.com

The Small Cruise Ship Collection

www.small-cruise-ships.com

small-cruise-ships.com

info@small-cruise-ships.com

YOUR SHIP: SEA CLOUD II

YOUR SHIP:	Sea Cloud II
VESSEL TYPE:	Tall Ship (Sailing)
LENGTH:	105 metres
PASSENGER CAPACITY:	96
BUILT/REFURBISHED:	2001

Launched in 2001, Sea Cloud II is a stunning vessel, built along traditional lines, but offering deluxe accommodation. She combines timeless elegance of sailing ships of the past with the highest safety standards and the luxurious comfort of modern cruise ships. Just like her legendary sister ship Sea Cloud, the 29,600 square feet of sails is set by hand which is a truly magical sight. Built to accommodate 96 passengers in five star luxury, she offers a range of beautifully appointed suites and cabins which are furnished with great style. All accommodations have outside views and the bathrooms, in light marble, are unusually spacious and extremely comfortable. The finest, carefully chosen fabrics, combined with leather, rattan and other materials, brass and gold, precious woods and marble together create an impressive ensemble. No expense has been spared to create a sympathetic ambience in both the accommodations and public areas and this is reflected throughout the vessel. Public areas include an elegant lounge, library, fitness centre, boutique, lido bar and hospital. The single sitting dining room is airy and modern and the quality of the cuisine and service will be to the highest of standards, as one would expect on a Sea Cloud cruise. Relax on the Lido deck and experience the natural

grandeur of travelling under sail, rekindling memories of a



bygone age.

The Small Cruise Ship Collection
www.small-cruise-ships.com

01432 507 280 (within UK)

info@small-cruise-ships.com | small-cruise-ships.com

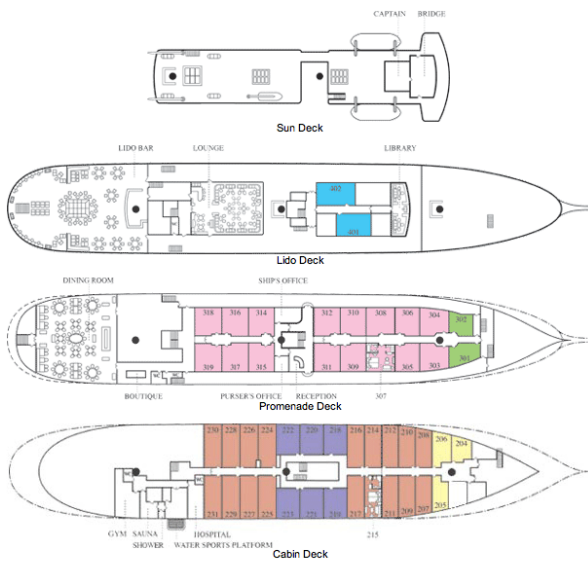
The Small Cruise Ship Collection

www.small-cruise-ships.com

small-cruise-ships.com

info@small-cruise-ships.com

INSIDE YOUR SHIP



Please note that category F cabins have one lower and one upper berth bed



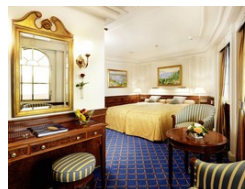
Category A. From



Category B. From



Category C. From



Category D. From



Category E. From

Category F Upper/Lower Beds. From



The Small Cruise Ship Collection

www.small-cruise-ships.com

small-cruise-ships.com

info@small-cruise-ships.com

PRICING

25-Oct-2025 to 02-Nov-2025

GTY Double Cabin. From	£3922 GBP pp
Category F Upper/Lower Beds. From	£4245 GBP pp
Category E. From	£4926 GBP pp
Category D. From	£5466 GBP pp
Category C. From	£5789 GBP pp
Category B. From	£6810 GBP pp
Category A. From	£7590 GBP pp