

# The Small Cruise Ship Collection

www.small-cruise-ships.com

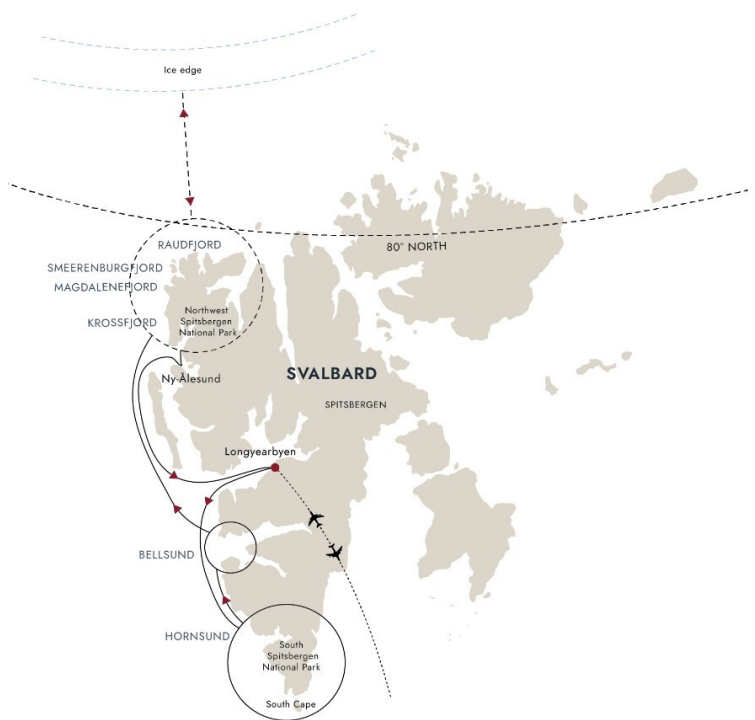


small-cruise-ships.com

info@small-cruise-ships.com

## SVALBARD IN SPRING - THE RETURN OF THE SUN 11 DAY EXPEDITION

An icy wonderland Witness the reawakening of life during spring in Svalbard. Starting in Oslo and setting sail from Longyearbyen, this concentrated voyage takes you through untouched snowscapes with serene fjords, snowcapped mountains and glittering glaciers. You'll discover the incredible scenery of Northwest Spitsbergen National Park, see the highlights of western Svalbard and get an understanding of climate science in Ny-Ålesund. Wildlife reigns Long days under the Midnight Sun and lingering winter ice give us a great opportunity to spot Arctic wildlife. Look out for returning birds like Little Auks and Arctic Terns, as well as Arctic foxes, Svalbard reindeer and walrus. With luck, we'll sail above the 80th parallel north and scout for wildlife along the ice edge. If conditions allow, we'll sail above the 80th parallel north and scout for wildlife along the ice edge.



### ITINERARY

Day 1 Explore cosmopolitan Oslo

Enjoy time in Oslo before flying to Svalbard

Your expedition begins in Oslo, Norway's fjord-side capital. If you have time, why not explore the city centre on your own.

The Small Cruise Ship Collection

www.small-cruise-ships.com

01432 507 280 (within UK)

info@small-cruise-ships.com | small-cruise-ships.com



## The Small Cruise Ship Collection

[www.small-cruise-ships.com](http://www.small-cruise-ships.com)

[small-cruise-ships.com](http://small-cruise-ships.com)

[info@small-cruise-ships.com](mailto:info@small-cruise-ships.com)

With its rich history and fashionable art scene, Oslo is a fascinating city. You'll find museums, galleries, and breathtaking architecture - including the beautiful Opera House and new Munch Museum.

Take a stroll in the Ekebergparken sculpture park, visit Akershus Fortress or relax in a floating sauna. Explore modern Sørenga and enjoy urban beach life or try New Nordic cuisine before spending the night in your airport hotel in Oslo.

[Day 2-4 Welcome to Longyearbyen](#)

Get to know the town at the top of the world

After a morning flight from Oslo, your adventure begins with two nights in the world's northernmost town. A colourful frontier settlement where people are outnumbered by snowmobiles, you'll discover that Longyearbyen is a unique place on the edge of the Arctic wilderness.

Spend the next two-and-a-half days exploring Longyearbyen and its surroundings. The town is perfect for getting around on foot - stroll down the main street and you might see Svalbard reindeer saunter by. But don't worry, although wild, they're curious and tame.

To give you a wider look, local guides will take you on an e-bike tour of the area and present the historic backdrop to the town at the top of the world.

From the expedition centre you'll head out of town and along an unpaved road to Hotellneset, which has a lake and showcases the remnants of the area's mining past. Svalbard's very first hotel was built here by Hurtigruten pioneer Richard With before the modern town we see today had even been constructed.

We'll then head back into Longyearbyen along the 'Burma Road', which was an important link for coal being shipped from the harbour, enjoying panoramic views as we ride. Sights along the way include an old funicular, the historic Svalbard Church and the ruined remains of the original Longyearbyen, which was bombed during WWII.

From here we'll continue under the steep cliffs of the Plateau Mountain, passing the graveyard and the iconic Huset - a building which has been everything from a cinema to bar, school and church. We will continue on to Coal Miners' Cabins, the original miners' home, and enjoy a relaxed lunch before completing our tour and returning to the hotel.

On Day 4 you'll have the morning to finish off looking around Longyearbyen before boarding the ship in the afternoon and beginning our expedition cruise.

[Day 5-6 Hornsund and Bellsund](#)

Majestic glaciers, birds and pioneer history

The Small Cruise Ship Collection

[www.small-cruise-ships.com](http://www.small-cruise-ships.com)

01432 507 280 (within UK)

[info@small-cruise-ships.com](mailto:info@small-cruise-ships.com) | [small-cruise-ships.com](http://small-cruise-ships.com)



## The Small Cruise Ship Collection

[www.small-cruise-ships.com](http://www.small-cruise-ships.com)

[small-cruise-ships.com](http://small-cruise-ships.com)

[info@small-cruise-ships.com](mailto:info@small-cruise-ships.com)

Your expedition cruise continues south towards Hornsund - one of Svalbard's most beautiful fjords. Rich, colourful vegetation makes way for towering mountains along this picturesque waterway. Head out on deck to spot seals and whales, Mount Hornsundtind, and glaciers calving into the sea.

Then we head to snowcapped mountains of Bellsund, whose cliffs are home to large colonies of auks, guillemots and Northern Fulmars, along with Arctic foxes and Svalbard reindeer below. Look out for the early mining settlements here and learn about Wanny Woldstad, the first female trapper.

Our activities will be determined by the ever-changing weather conditions of Hornsund and Bellsund. Your Expedition Team will decide on the best possibilities for exploring on the day.

### [Day 7-8 Northwest Spitsbergen National Park](#)

Explore pristine snowscapes under the Midnight Sun

Making our way to the Northwest Spitsbergen National Park, we'll cruise into Magdelenefjorden and through Sjørgattet, the southern entrance to Smeerenburgfjord. The light of the Midnight Sun gives us plenty of time to explore this breathtakingly scenic area.

Over the next two days, we'll explore the natural beauty and rugged tundra of this breathtaking national park. In the wilderness of steep mountains, stark glaciers and beautiful

offshore islands, we'll scan for some of the animals of the Arctic - seals, walruses and reindeer. Early in the season, there's a good chance we may spot polar bears too, so we'll be on the lookout for these iconic but elusive predators. And as we progress further into June, we may see whales returning to the region for summer and birdlife such as Little Auks, Arctic Terns, skuas, Eider Ducks and Barnacle Geese.

Each day will be different. From landings to kayaking, be ready for anything as your Captain and Expedition Leader decide on the best landing sites and activities based on the day's conditions.

### [Day 9 Ice edge attempt](#)

Experience the opportunity of sailing to the edge of the polar ice cap

If conditions allow, we'll sail north and cross the 80th parallel to explore the ever-changing ice edge. The transition zone between the ice cap and the sea is a magical yet ephemeral place where the waters are filled with ice floes and drifting pack ice. From the ship there are great opportunities here for spotting wildlife, such as seals and walruses who lounge photogenically on the sparkling ice. And if the conditions are right, we'll lower our expedition boats into the water and enjoy an unforgettable close-up experience amid the floating ice.

The ice edge isn't a fixed boundary, and it moves depending on the season and conditions, so visiting it will be an attempt

The Small Cruise Ship Collection

[www.small-cruise-ships.com](http://www.small-cruise-ships.com)

01432 507 280 (within UK)

[info@small-cruise-ships.com](mailto:info@small-cruise-ships.com) | [small-cruise-ships.com](http://small-cruise-ships.com)



rather than a certainty. From May to August, as summer progresses, it retreats further towards the pole, meaning it may be out of reach for us. If this is the case then we'll instead explore the no-less-impressive deep fjords, mighty glaciers and enchanting scenery of the Svalbard coast. In late July and into August, this is a time when the wildflowers appear, blanketing the landscape with a blaze of beauty and colour.

#### Day 10 Peaceful Ny-Ålesund

Experience science, serenity and epic scenery

Today you'll discover the serenity of Ny-Ålesund and neighbouring fjords such as Krossfjord and Kongsfjord. Disconnect and enjoy a day without distractions as the Norwegian Mapping Authority's nearby geodetic station means we must switch off Wi-Fi and Bluetooth.

One of the northernmost settlements and a former mining town, Ny-Ålesund was the starting point for Roald Amundsen's expeditions north with the airship 'Norge'. Now a hub for global science and climate research, you can still see remnants of the town's history.

You'll be immersed in rugged, glacial scenery as we explore the fjords around Ny-Ålesund. Be ready for adventure; we'll seize any opportunity to launch our small expedition boats, go ashore to hike or cruise by majestic glaciers.

#### Day 11 Return to Longyearbyen

A final day on top of the world

Your Arctic adventure comes to an end back in Longyearbyen. A transfer will take you to the airport for your flight to Oslo. You'll return home knowing more about Arctic animals, history, polar ice and climate change than you arrived with - and memories of an incredible experience.

If you're not ready to say goodbye just yet, why not spend some more time in the Arctic and join our optional Post-Programme.

Please note:

Itineraries are subject to change.



## The Small Cruise Ship Collection

[www.small-cruise-ships.com](http://www.small-cruise-ships.com)

[small-cruise-ships.com](http://small-cruise-ships.com)

[info@small-cruise-ships.com](mailto:info@small-cruise-ships.com)

## YOUR SHIP: FRAM

**YOUR SHIP:**

**Fram**

**VESSEL TYPE:**

**LENGTH:**

**PASSENGER CAPACITY:**

**BUILT/REFURBISHED:**

MS Fram is designed for sailing in polar waters, holds the highest safety standards and is the perfect size for optimum nautical manoeuvrability and guests' comfort. With space for only 276 guests, you are sure to get to know many of your fellow travellers. You will share stunning sights and memories of a lifetime long after returning home. The Norwegian word Fram means 'forward' - lifting expectations of the voyage at hand. MS Fram was built in 2007 with one mission in mind - to bring her guests closer to nature, wildlife and unforgettable experiences. As well as offering numerous lounges in which to relax, our more active guests can use our well-equipped gym. Meanwhile, on deck, our Jacuzzis guarantee you surreal memories when passing the towering icebergs of Antarctica or Greenland.



The Small Cruise Ship Collection

[www.small-cruise-ships.com](http://www.small-cruise-ships.com)

**01432 507 280** (within UK)

[info@small-cruise-ships.com](mailto:info@small-cruise-ships.com) | [small-cruise-ships.com](http://small-cruise-ships.com)

# The Small Cruise Ship Collection

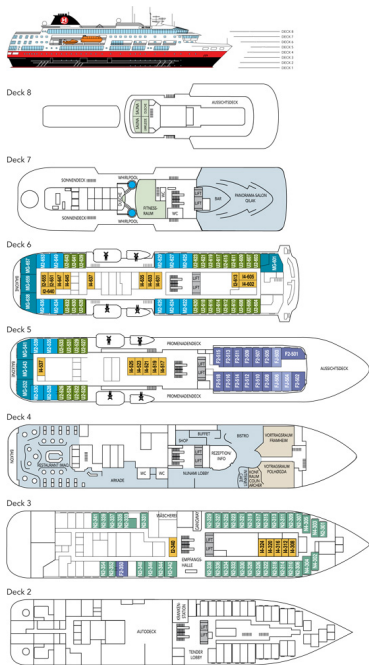
www.small-cruise-ships.com



small-cruise-ships.com

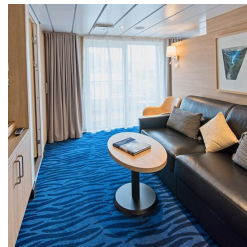
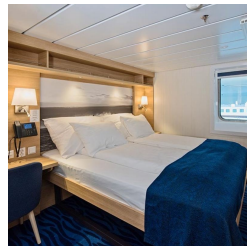
info@small-cruise-ships.com

## INSIDE YOUR SHIP



Arctic Superior. From

Expedition Suite. From



Polar Inside. From

Polar Outside. From

# The Small Cruise Ship Collection

www.small-cruise-ships.com



small-cruise-ships.com

info@small-cruise-ships.com

## PRICING

### 17-May-2025 to 27-May-2025

Expedition Suite. From	£8955 GBP pp
Polar Outside. From	£6765 GBP pp
Polar Inside. From	£6265 GBP pp
Arctic Superior. From	£7299 GBP pp

### 24-May-2025 to 03-Jun-2025

Polar Inside. From	£6055 GBP pp
Arctic Superior. From	£7299 GBP pp
Expedition Suite. From	£8955 GBP pp
Polar Outside. From	£6765 GBP pp

### 31-May-2025 to 10-Jun-2025

Expedition Suite. From	£9359 GBP pp
Arctic Superior. From	£7609 GBP pp
Polar Inside. From	£6295 GBP pp
Polar Outside. From	£7039 GBP pp

### 05-Jun-2025 to 15-Jun-2025

Arctic Superior. From	£7475 GBP pp
Expedition Suite. From	£9055 GBP pp
Polar Outside. From	£7169 GBP pp

### 07-Jun-2025 to 17-Jun-2025

Polar Outside. From	£7039 GBP pp
Arctic Superior. From	£7609 GBP pp
Expedition Suite. From	£9359 GBP pp
Polar Inside. From	£6295 GBP pp

### 16-May-2026 to 26-May-2026

Polar Outside. From	£7429 GBP pp
Arctic Superior. From	£8045 GBP pp
Expedition Suite. From	£9929 GBP pp
Polar Inside. From	£6625 GBP pp

### 21-May-2026 to 31-May-2026

Expedition Suite. From	£9599 GBP pp
Arctic Superior. From	£7899 GBP pp
Polar Outside. From	£7569 GBP pp

### 23-May-2026 to 02-Jun-2026

Polar Inside. From	£6625 GBP pp
Expedition Suite. From	£9929 GBP pp
Arctic Superior. From	£8045 GBP pp
Polar Outside. From	£7429 GBP pp

### 28-May-2026 to 07-Jun-2026

Polar Outside. From	£7569 GBP pp
Expedition Suite. From	£9599 GBP pp
Arctic Superior. From	£7899 GBP pp



# The Small Cruise Ship Collection

[www.small-cruise-ships.com](http://www.small-cruise-ships.com)



[small-cruise-ships.com](http://small-cruise-ships.com)

[info@small-cruise-ships.com](mailto:info@small-cruise-ships.com)

## PRICING

### 30-May-2026 to 09-Jun-2026

Polar Outside. From	£7725 GBP pp
Arctic Superior. From	£8369 GBP pp
Polar Inside. From	£6879 GBP pp
Expedition Suite. From	£10359 GBP pp

### 04-Jun-2026 to 14-Jun-2026

Polar Outside. From	£7875 GBP pp
Arctic Superior. From	£8225 GBP pp
Expedition Suite. From	£10015 GBP pp

### 06-Jun-2026 to 16-Jun-2026

Polar Inside. From	£6879 GBP pp
Polar Outside. From	£7725 GBP pp
Expedition Suite. From	£10359 GBP pp
Arctic Superior. From	£8369 GBP pp

### 11-Jun-2026 to 21-Jun-2026

Polar Outside. From	£7875 GBP pp
Arctic Superior. From	£8225 GBP pp
Expedition Suite. From	£10015 GBP pp