

The Small Cruise Ship Collection

www.small-cruise-ships.com

small-cruise-ships.com

info@small-cruise-ships.com

TASMANIAN COASTAL DISCOVERY CRUISE FROM HOBART

Coral Expeditions' Tasmania cruises explore Australia's island state poised at the edge of the world where the Southern and Pacific Oceans collide. Tasmania's pristine World Heritage wilderness and national parks teem with native wildlife, where rugged mountain ranges meet the sea with soaring coastal cliffs and crescent-shaped beaches carved by the elements. Amidst this pristine, natural backdrop, Tasmania's intriguing colonial history is underpinned by a compelling convict heritage and historic sites. Follow in the pioneering footsteps of intrepid colonial explorers to far-flung reaches of the island where tales of maritime adventures abound, preserved streetscapes are virtual living museums and world-class artists find inspiration at every turn. Shaped by a climate straddling the Roaring Forties latitudes, the Apple Isle's verdant valleys and rolling hills are clad in fertile pastures, vineyards and orchards bathed in crisp clean air and warm summer sunshine. Emerging from cellar doors and farm gates are award-winning cheeses, premium wines, craft beers and artisanal spirits inspired by Tasmania's simple but elegant natural treasures. Cruise to the edge of the world on a Tasmanian expedition cruise that teams wombats with wine, beaches with brie and convict ruins with craft beer in a palate-pleasing adventure cruise into Tasmania's wild heart.



ITINERARY

DAY 1: DEPART HOBART

Arrive at your advised check-in location for boarding at 4:00pm, with time to settle into your stateroom before our 5:00pm departure. Take the time to become acquainted with all the facilities onboard Coral Discoverer before meeting your fellow travellers, the Captain and crew for the Captain's Welcome Drinks.

BRUNY ISLAND

From Adventure Bay on the east coast of Bruny Island, we embark on an exhilarating 3 hour tour with award-winning local operator Pennicotts Wilderness Journeys to the rugged southern coastline of South Bruny Island. Enter deep sea caves and pass through the narrow gap between the coast and 'The Monument' and see seals, dolphins and sea birds at close range.

The Small Cruise Ship Collection

www.small-cruise-ships.com

01432 507 280 (within UK)

info@small-cruise-ships.com | small-cruise-ships.com



The Small Cruise Ship Collection

www.small-cruise-ships.com

small-cruise-ships.com

info@small-cruise-ships.com

Later we walk along the dramatic coastal cliffs of Fluted Cape and hope to see Bennett's Wallabies which are endemic to Bruny Island. Learn about how southern right whales were almost hunted to extinction and Adventure Bay housed four whaling stations before the industry's decline in the mid-1840s. The ruins can be seen on a walk to Grassy Point.

MARIA ISLAND

Maria Island can be referred to as a Noah's Ark for native Tasmanian species. The Maria Island National Park provides an ideal sanctuary, and is one of the best places in Australia to observe endemic birdlife as well as wombats, Cape Barren geese, Forester Kangaroos, Bennett's Wallabies, and pademelons.

Stroll amongst the ruins and beautifully restored buildings of the Darlington convict settlement and take a walk to the striking formations of the Painted Cliffs, where rich iron deposits have stained the sandstone cliffs with coloured streaks of red, purple and orange. With ample time at Maria Island, we also have the opportunity to do the Fossil Cliffs walk and the Reservoir circuit.

FREYCINET NATIONAL PARK

The Freycinet Peninsula is a dramatic headland dominated by a pink-hued granite mountain range called the Hazards. Blessed with picturesque sweeping bays with white sand beaches like famed Wineglass Bay, much of the peninsula is designated as Freycinet National Park.

Take a guided hike along the Isthmus Track to Wineglass Bay, or continue on to the look out to be rewarded with magnificent views of the azure waters of this iconic beach. Later land at Schouten Island with time for a beach stroll on this secluded island.

PORT DAVEY & BATHURST HARBOUR

On the edge of the world in southwest Tasmania, the landscape here is about as wild as it gets. Raw, craggy-peaked mountains and drowned river valleys. Wild rivers and rivulets carved by an eternity. Where tannin-rich freshwater sits atop saltwater, tinting the ocean the colour of tea. With no road access, the logical way to explore this wilderness is by small expedition ship.

Sheltered from Roaring Forties winds that buffet this coast is the protected haven of Port Davey and Bathurst Harbour. A marine reserve and part of the Tasmanian Wilderness World Heritage Area, we spend two whole days (weather permitting) enjoying this rare opportunity to hike, kayak and take in this pristine natural environment. We explore by Xplorer tender vessels and learn about intrepid European explorers and Indigenous Australians, who once walked this land and keep a lookout for the rare and endangered Orange Bellied Parrot amongst other wildlife.

*Access to Port Davey and Bathurst Harbour is subject to annual permits being granted by Tasmania Parks and Wildlife.

HUON VALLEY

The Small Cruise Ship Collection

www.small-cruise-ships.com

01432 507 280 (within UK)

info@small-cruise-ships.com | small-cruise-ships.com



The Small Cruise Ship Collection

www.small-cruise-ships.com

small-cruise-ships.com

info@small-cruise-ships.com

The Huon Valley was one the hub of Tasmania's apple growing industry, and the reason the state is nicknamed 'The Apple Isle'. These days this region is known for its burgeoning food and wine scene, as well as its variety of natural attractions. The picturesque Huon River winds gently through this valley, its banks lined with charming little towns, orchards and boutique wineries, before emptying out into the D'entrecasteaux channel. The southern end of this valley is bordered by the heritage listed Southwest National Park.

Spend time in this picturesque valley exploring both its natural and epicurean offerings. Meet local producers, enjoy coastal walks and delight in all this region has to offer.

PORT ARTHUR HISTORIC SITE

One of Australia's most significant historic places, the UNESCO World Heritage-listed Port Arthur ruins stand sentinel on the Tasman Peninsula south of the narrow isthmus of Eaglehawk Neck. For more than 40 years the Port Arthur penal colony housed British and Australian convicts sentenced to hard labour before its heavy iron doors clanked shut for the last time in 1877. Today, the Historic Site has over 30 buildings, ruins and restored period homes set in 100 acres of landscaped grounds. In the company of Port Arthur's knowledgeable guides, join a walking tour of this site.

TASMAN PENINSULA

The Tasman Peninsula is known for its fascinating geological formations like the Tessellated Pavement, Tasman Arch, and the soaring 300 metre high dolerite sea cliffs of Cape Raoul, Cape Pillar and Cape Hauy - the tallest in the southern hemisphere. Watch fur seals hauling out on the rocks, as well as playful dolphins feeding and magnificent albatross soaring amongst the updrafts created by the sea cliffs. We will visit Fortescue Bay, hike sections of the coastal Tasman Trail, take a scenic Xplorer cruise of the rugged coastline and kayak in Canoe Bay.

DAY 11: ARRIVE HOBART

Our Tasmania adventure concludes in Hobart this morning as we bid farewell to new-found friends, the Master and crew, disembarking at 8:00am. A complimentary transfer is provided to CBD hotels, or the airport is included.

Please note:

This itinerary is an indication of the destinations we visit and activities on offer. Throughout the expedition we may make changes to the itinerary as necessary to maximise your expeditionary experience. Allowances may be made for seasonal variations, weather, tidal conditions, and any other event that may affect the operation of the vessel. Coral Expeditions suggests that you do not arrive on the day of embarkation or depart on the day of disembarkation due to any changes that may occur in scheduling.

The Small Cruise Ship Collection

www.small-cruise-ships.com

01432 507 280 (within UK)

info@small-cruise-ships.com | small-cruise-ships.com



The Small Cruise Ship Collection

www.small-cruise-ships.com

small-cruise-ships.com

info@small-cruise-ships.com

YOUR SHIP: CORAL DISCOVERER

YOUR SHIP: Coral Discoverer

VESSEL TYPE:

LENGTH:

PASSENGER CAPACITY:

BUILT/REFURBISHED:

Yacht-like Coral Discoverer set a new benchmark standard of sophistication in expedition cruising when she was constructed by us in 2005. Coral Discoverer sailed on pioneering expeditions through Papua New Guinea, the islands of the South Pacific, Vanuatu, New Zealand, West Papua, and the Spice Islands. She led explorations into remote areas, focusing on destinations that were largely inaccessible to larger cruise ships. Coral Discoverer is exceptionally nimble and maneuverable, with a shallow draught to get up close to destinations, ocean views from all public spaces, an expansive open-air sun deck, all outside-facing staterooms, and state-of-the-art tools for exploration including the Xplorer, zodiacs, a glass-bottom boat, and kayaks. A full refurbishment in 2018 saw the addition of private balconies, the much-loved Xplorer sundeck bar, and all new furnishings throughout the ship. Comfortable, reliable, and intimately scaled, Coral Discoverer now conducts expeditions across Australia's coast - Tasmania, Cape York and Arnhem Land and the Kimberley. Australian flagged and staffed by an Australian and New Zealand crew, your experience aboard Coral Discoverer will be memorable. Onboard Accommodation Onboard accommodation comprises 36 spacious modern

staterooms. You can select from Bridge, Promenade or Main Deck staterooms offering a choice of twin through to junior king-size doubles. All staterooms have an ocean view, en-suite facilities, settee, large wardrobe, desk, luggage storage, individual air-conditioning control, and are serviced daily. Onboard Facilities What you would expect of a much larger cruise ship: Large sundeck Spa Pool Guest computer Comprehensive reference library Phone and fax facilities Lecture lounge with large plasma screen Limited laundry facilities Two fully stocked cocktail bars Boutique and dive shop Air-conditioned public areas Coral Discoverer is equipped with the latest technology active stabilizers and is fitted with state-of-the-art safety and navigational equipment and is the only Australian passenger ship registered with full SOLAS compliance allowing opportunities to explore a multitude of international voyages. Dining All meals during the cruise are included. Breakfast and lunch are served in the Dining Room located on the Main Deck and are buffet-style while dinner is table d'hote. Coffee and tea is available 24 hours. Standard hours are breakfast from 7:00-8:30am, lunch at 12:30pm and dinner at 7:30pm however meal times may vary according to the day's activities. Meal times will be advised in the onboard daily bulletins. Excursion Boats And Zodiacs The "Xplorer" is a specially designed aluminium excursion vessel used for the majority of our excursions. This vessel has high horsepower engines and will accommodate all passengers at one time. The "Xplorer" will be used for landings and for extensive exploration of rivers and tributaries. For your added convenience and comfort, the "Xplorer" is equipped with an awning and toilet. We

The Small Cruise Ship Collection

www.small-cruise-ships.com

01432 507 280 (within UK)

info@small-cruise-ships.com | small-cruise-ships.com



The Small Cruise Ship Collection

www.small-cruise-ships.com

small-cruise-ships.com

info@small-cruise-ships.com

also carry two inflatable landing craft (Zodiacs). Designed for expedition work, these large and heavy-duty inflatables are extremely safe. Separate air compartments retain a large reserve of buoyancy even if the boats damaged. The flat bottom design permits these crafts to land directly onto the beaches. Expect nonetheless to wade through shallow water to reach the shore. See photo



below (right)



The Small Cruise Ship Collection

www.small-cruise-ships.com

01432 507 280 (within UK)

info@small-cruise-ships.com | small-cruise-ships.com

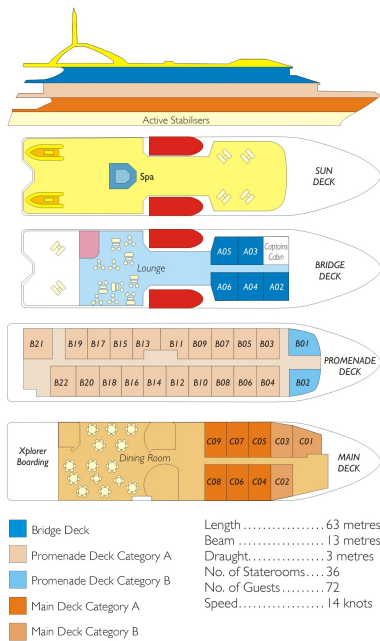
The Small Cruise Ship Collection

www.small-cruise-ships.com

small-cruise-ships.com

info@small-cruise-ships.com

INSIDE YOUR SHIP



Bridge Deck Balcony Stateroom Main Deck A Stateroom

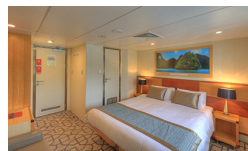


Main Deck B Stateroom

Promenade A Stateroom



Promenade B Stateroom





The Small Cruise Ship Collection

www.small-cruise-ships.com

small-cruise-ships.com

info@small-cruise-ships.com

PRICING

27-Jan-2026 to 06-Feb-2026

Promenade A Stateroom	£5899 GBP pp
Main Deck B Stateroom	£4525 GBP pp
Promenade B Stateroom	£5439 GBP pp
Bridge Deck Balcony Stateroom	£6269 GBP pp
Main Deck A Stateroom	£4979 GBP pp

06-Feb-2026 to 16-Feb-2026

Bridge Deck Balcony Stateroom	£6269 GBP pp
Promenade A Stateroom	£5899 GBP pp
Main Deck B Stateroom	£4525 GBP pp
Main Deck A Stateroom	£4979 GBP pp
Promenade B Stateroom	£5439 GBP pp

16-Feb-2026 to 26-Feb-2026

Promenade B Stateroom	£5439 GBP pp
Bridge Deck Balcony Stateroom	£6269 GBP pp
Main Deck A Stateroom	£4979 GBP pp
Promenade A Stateroom	£5899 GBP pp
Main Deck B Stateroom	£4525 GBP pp