

The Small Cruise Ship Collection

www.small-cruise-ships.com

small-cruise-ships.com

info@small-cruise-ships.com

THROUGH JAPAN'S RYUKYU ISLANDS

Join the first expedition ship to discover Japan's Ryukyu Islands on a journey rich with insights into the nature, culture and communities of these unexplored outposts. Set sail from Fukuoka and begin your journey in Nagasaki to learn of the region's wartime history, study internationally influenced architecture and explore traditional shrines and temples. Venture deep into the remote Okinawan Islands to encounter lifestyles of those who make their living by the sea, including at the fishing village of the Suwanosejima. Learn of ancient mythical legends tied to Okinoerabujima and discover the pristine marine ecosystems of the Kerama Islands. Walk amongst towering cedars in the ancient woodland of Yakushima, kayak through the undeveloped forested scenery of Iriomote Island and look on in awe of the strombolian eruption of passing volcanic landscapes. Bear witness to traditional island lifestyles as you make your way through a region seldom visited by Western travellers.



ITINERARY

DAY 1: DEPART FUKUOKA

Board Coral Adventurer at the harbour city of Fukuoka at 4:00pm. Settle into your cabin before Captain's welcome drinks where you meet your crew and fellow guests as the sun sets.

NAGASAKI

Once home to a major imperial Japanese base during the first Sino-Japanese War and Russo-Japanese War as well as being the second city after Hiroshima to be hit by an atomic bomb, Nagasaki has a colourful history. Visit the peace memorial for the atomic bomb and the many shrines and temples throughout. Take note of the mix of old and new architecture with international influences from the US, Dutch to Chinese.

SHIMOKOSHIKIJIMA

The Small Cruise Ship Collection

www.small-cruise-ships.com

01432 507 280 (within UK)

info@small-cruise-ships.com | small-cruise-ships.com



The Small Cruise Ship Collection

www.small-cruise-ships.com

small-cruise-ships.com

info@small-cruise-ships.com

SUWANOSEJIMA

Shimokoshikijima is a top geological site with large scenic cliffs along with dinosaur fossils at sites located across the island. Here we have the opportunity to explore the Napoleon Rock that stands an impressive 127m tall. Spend time at the Satsumasendai Fossil Exhibition, see the famous three-tiered waterfall, explore dinosaur fossil sites and hear songs played on the traditional instrument called a Gottan.

Suwanosejima is one of the Tokara Islands and is home to a population of less than 100 people who make their living from agriculture, fishing and seasonal tourism. The volcano on this island is one of the most active in the world, in a state of near-continuous strombolian-style eruption since 1949. Cruise around the island to view this unique, remote destination.

KAGOJIMA

Kagojima is the easternmost and second largest of the Sumi Islands belonging to Kagojima Prefecture. Flagged as an Important Bird Area by BirdLife International, the island is home to Japanese wood pigeons and Ryukyu robins. Beach hop on the west coast to find pristine white sands and sea turtles, with the opportunity to swim in the clear waters. Explore the network of wide caves at low tide and the fascinating daily operations of the space centre.

AMAMI OSHIMA

Amami Oshima is home to a rare endemic wildlife including the prefectural Lidth's Jay bird recognisable by its blue and red plumage and the Amami black rabbit - one of the most primitive species of rabbit alive today. Amami Oshima's underwater ecosystem is equally as diverse as its shoreside flora and fauna. Enjoy time on the picturesque tropical beaches by swimming, kayaking and diving. Explore the Kuroshio Forest by kayak and learn of the island's history at Amani Park.

YAKUSHIMA

Walk through UNESCO-listed thousand-year-old cedar forests and view a 25-metre-tall giant cedar tree estimated to be up to 7,200 years old at Yakusugi Land. With a number of walking trails on the island, we may visit some of the many waterfalls as well. The Yakusugi Museum displays the ecology, history and industry of the forests on Yakujima Island. Here you can learn about the Yakushima cedar trees, the products that come from them and how they were harvested.

OKINOERABUJIMA

The 'island of flowers and limestone caves' is a beautiful and peaceful island. Over 300 limestone caves can be found here, where you can discover the natural beauty and mysteries which have spawned many of the legends surrounding these natural treasures. Venture into Shoryudo Cave and be surrounded by twinkling stalactites and stalagmites. Spot abundant marine life alongside numerous species of coral while swimming, snorkelling and diving in the island's pristine waters.

The Small Cruise Ship Collection
www.small-cruise-ships.com

01432 507 280 (within UK)

info@small-cruise-ships.com | small-cruise-ships.com



The Small Cruise Ship Collection

www.small-cruise-ships.com

small-cruise-ships.com

info@small-cruise-ships.com

YORONJIMA

Also known as Yoronto and Yoron Island, Yoronjima is the northernmost island in Japan where the Southern Cross constellation can be seen. Part of the Amami Gunto National Park, Yoronjima is famed for its pellucid waters and water sports including diving, swimming, snorkelling and kayaking.

NAHA, OKINAWA

One of the 47 prefectures in Japan, Naha is one of the 160 islands comprising the Okinawa group. Encounter Okinawa's culture that sets it apart from the other Japanese prefectures, including the local sake: Awamori. Learn of and participate in the rich history here by trying your hand at a traditional Ryukyu Glass workshop, experiencing the 600-year-old practice of Hanhau textile weaving and visiting one of the oldest distilleries in Okinawa - Zuisen Distillery.

ZAMAMI ISLAND, KERAMA ISLAND GROUP

The second largest of the Kerama Islands, Zamami is home to the nationally protected species of Kerama deer, recognisable by their large eyes and a white heart-shaped pattern below their tail. The water clarity here is world-class and the colour of the ocean even has its own namesake: 'Kerama blue'. The underwater scenery is spectacular and lures scuba divers from around the world, though is equally appealing for snorkellers. Visit the observatories on Zamami Island and enjoy magnificent views. Swim, snorkel, scuba dive and kayak from the pristine

beaches of largely undeveloped islands that receive few visitors.

KUMEJIMA

Part of the Okinawa Shoto Island group, Kumejima is known for its numerous unique rock formations and quiet unspoilt natural coastline. The island was once used to produce large amounts of rice due to its abundance of freshwater. Here, we will enjoy water activities in the warm waters and cruise the rocky coastline.

MIYAKOJIMA

Composed of limestone, this triangular island is one of three islands connected by bridges. Known to be home to some of Japan's best beaches, it is a great spot for water activities with its unique limestone caves, canyons and rock formations. It is possible to swim through tunnels, short passageways and even into a pitch-black dome, where a misty sheet of vapor surrounds you as you pop your head up from the water. Observe the 1600 species of flora on the island on a stroll through the Botanical Garden and walking trails.

ISHIGAKI

Ishigaki, known as 'the country of poets, the island of songs and the land of dance,' an entertainment culture unique to Okinawa. View the majestic manta rays, as Ishigaki is also home to the highest encounters of these ocean giants. Ranked the number one diving destination in Japan for 16 years with high visibility

The Small Cruise Ship Collection

www.small-cruise-ships.com

01432 507 280 (within UK)

info@small-cruise-ships.com | small-cruise-ships.com



and vibrant coral and marine life, enjoy diving and snorkelling here.

IRIOMOTE AND HATERUMA

On Iriomote Island, the second largest island in Okinawa, kayak through the mangroves and soak in views of the largely undeveloped island covered in dense jungle. Later, admire the star-filled night sky with the benefit of little light pollution from the Astronomical observation tower on Hateruma Island - the southernmost inhabited island of Japan.

YONAGUNI ISLAND

Discover the submerged stone structures of what's thought to be an ancient underwater city sunk by an earthquake approximately 2,000 years ago. Whale and hammerhead sharks are commonly spotted here. Cruise the coastline to view unique rock formations and learn of the island's history, culture and language. Climb to the Tindabana outlook where you can gaze at panoramic views of Sonai Village or walk to the monument that marks the westernmost point of Japan.

DAY 17: ARRIVE KEELUNG

Our voyage ends in the Taiwanese city of Keelung. Disembark Coral Adventurer at 9:30 am and bid farewell to new-found friends, the Master and crew.

Please Note:

Itineraries are subject to change.



The Small Cruise
Ship Collection

www.small-cruise-ships.com

small-cruise-ships.com

info@small-cruise-ships.com

YOUR SHIP: CORAL ADVENTURER

YOUR SHIP: Coral Adventurer

VESSEL TYPE:

LENGTH:

PASSENGER CAPACITY:

BUILT/REFURBISHED:

Launched in 2018 with her maiden voyage in 2019, Coral Adventurer has been designed and built to take you closer to unspoilt vistas in comfort, style and safety. A culmination of two years of design and three decades of passion for expedition cruising. BIGGER IS NOT BETTER At a time when cruise ships get larger and glitzier, we remain stubbornly compact and intimate. Our ships are designed to take you to unspoilt destinations not accessible to large ships. We want you to have the luxury of space, dine with whom you please, or find your quiet corner on deck. So Coral Adventurer has just 60 spacious cabins. This preserves the intimate atmosphere we are known for without sacrificing the stability and comfort of a true ocean going vessel. BUILT FOR DISCOVERY The Coral Adventurer features the trademark dual 'Xplorer' tenders cradled on a hydraulic platform slung off the back of the ship, enabling our guests to go ashore in comfort and ease. The shallow draft of the ship enables us to go closer to shore than larger ships. Together with a renowned expedition team, this new ship will offer the most advanced expedition capabilities of any small ship afloat. BUILT FOR COMFORT With active stabilisers dampening sea motion, mostly balcony cabins, and interiors designed with the colours and

textures of tropical Queensland, the Coral Adventurer is a comfortable ship. She features promenade decks, generous communal areas that accommodate all guests, a passenger elevator, and an open kitchen where you can observe our chefs whip up small batch cuisine from locally sourced ingredients. BUILT FOR PERSONAL SERVICE The Coral Adventurer will continue a proud tradition of Australian flagged vessels with friendly and professional Australian crew. The onboard atmosphere remains refreshingly informal and intimate. Take your seat at our bridge lounge, chat with the captain at your leisure or accompany our chefs on a market tour. Food and wine features Single seating dining area with communal 'wine table' finished with Australian stone; serving buffet breakfast and lunch, and multi-course table d'hote dinners Showcase galley visible to guests for fresh small-batch cuisine featuring Australian produce Multiple indoor and outdoor bars, including the Explorer bar on the sundeck for sunset drinks with 180 degree views Curated wine cellar featuring modestly priced boutique wines for daily drinking and exceptional vintage Australian reds. Guest comfort All outside guest cabins with en-suite bathrooms; majority have private balcony Active stabilisers to dampen sea motion Gym equipped with elliptical trainers and treadmills Passenger elevator Wi-Fi available in all

The Small Cruise
Ship Collection

www.small-cruise-ships.com

01432 507 280 (within UK)

info@small-cruise-ships.com | small-cruise-ships.com



The Small Cruise Ship Collection
www.small-cruise-ships.com

small-cruise-ships.com

info@small-cruise-ships.com



guest areas

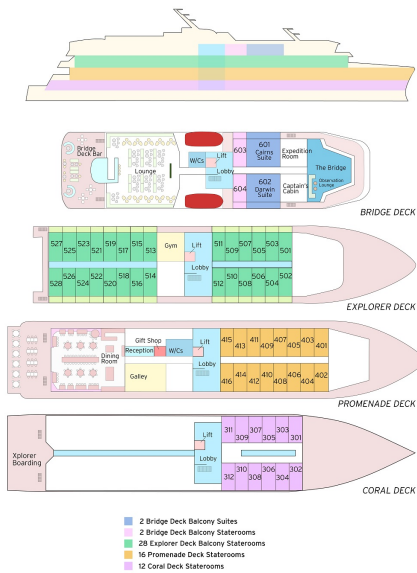
The Small Cruise Ship Collection

www.small-cruise-ships.com

small-cruise-ships.com

info@small-cruise-ships.com

INSIDE YOUR SHIP



Bridge Deck Balcony Suite ■

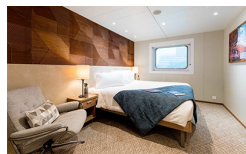
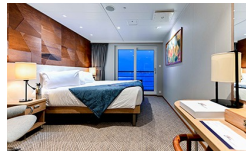


Coral Deck ■ Stateroom



Explorer Deck Balcony Stateroom

Promenade Deck Stateroom



The Small Cruise Ship Collection

www.small-cruise-ships.com

01432 507 280 (within UK)

info@small-cruise-ships.com | small-cruise-ships.com



The Small Cruise
Ship Collection

www.small-cruise-ships.com

small-cruise-ships.com

info@small-cruise-ships.com

PRICING

05-Oct-2024 to 21-Oct-2024

Promenade Deck Stateroom	£8912 GBP pp
Coral Deck Stateroom	£7425 GBP pp
Bridge Deck Balcony Suite	£16026 GBP pp
Explorer Deck Balcony Stateroom	£11876 GBP pp