



VOYAGE TO ICELAND — WINDSWEPT ISLES OF THE NORTH FROM HAMBURG TO REYKJAVIK IN 7 DAYS

A North Atlantic island odyssey Setting out from Hamburg, we sail into the North Sea and head in the direction of Iceland. Our first stop is Norway's sublime Lysefjord before we head back out to sea and visit the highlights of the Orkneys, the Shetlands and the Faroes on our voyage north. These wild and dramatic islands are rugged and green, but they all offer very welcoming inhabitants and fascinating history. From one great city to another The adventure begins in Hamburg, Germany's bustling port city, and ends in stylish Reykjavik. As our journey progresses, we'll be far from any cities, but we will get to experience the much smaller settlements that dot the North Atlantic islands along our route. And - of course - we'll see some fantastic natural sights and be on the lookout for wildlife. Once we arrive in Reykjavik, this voyage is ideal to combine with one of our Iceland expeditions, such as a circumnavigation.

The Small Cruise Ship Collection

www.small-cruise-ships.com



small-cruise-ships.com

info@small-cruise-ships.com



Once aboard, you'll collect your complimentary expedition jacket, meet your Expedition Team, explore the onboard comforts of your ship and settle into your cabin as we set sail.

DAY 2 A day at sea

Enjoy a leisurely sea day aboard MS Fridtjof Nansen

As your expedition cruise travels from Hamburg towards Norway's Lysefjord, you'll have the opportunity to learn more about the places you'll visit with your expert Expedition Team. Join them for lectures in the Science Centre and learn all about the journey ahead.

A day at sea gives you plenty of time to relax, and your modern expedition ship allows you to do that in style. Why not head to the wellness area, sauna or infinity pool. You're sure to enjoy our delicious, locally-sourced Nordic and international dishes served in the three restaurants.

DAY 3 Sailing Lysefjord

Remarkable landscapes of Lysefjord

Today, we'll sail down 25 mile long Lysefjord. Enjoy a day of remarkable landscapes from the observation decks, taking in the sublime scenery of the long and narrow fjord among striking

ITINERARY

DAY 1 Departing Hamburg

Your adventure to Iceland begins

Your expedition cruise sets sail from Hamburg - a city full of history, art and culture. There's plenty to see and do here, so take some time to explore before boarding your expedition ship.

You'll discover many of the city's attractions in the old town, Altstadt, including St Nikolai Memorial and the historic street of Deichstraße. Why not discover the interesting history of two UNESCO World Heritage Sites - Chilehaus and the world's largest warehouse complex.

The Small Cruise Ship Collection
www.small-cruise-ships.com

01432 507 280 (within UK)

info@small-cruise-ships.com | small-cruise-ships.com



 The Small Cruise
Ship Collection
www.small-cruise-ships.com

small-cruise-ships.com

info@small-cruise-ships.com

vertical cliffs.

From the fjord we can take a peek from below at the world-famous Pulpit Rock - Preikestolen - and look out for the equally renowned Kjaeragbolten, a giant boulder that seems precariously wedged into a mountain crevasse. If you're feeling adventurous, join our Expedition Team for small expedition boat cruising or kayaking and see the immense fjord from a new perspective.

DAY 4 The Shetland Islands

Discover the deep Norse roots of Scotland's Shetland Islands

We cruise northwest to the Shetland Islands. Lerwick, the capital, is a friendly, Victorian-influenced fishing town set in beautiful scenery.

Navigate the narrow lanes on foot to discover little shops selling local whiskies, woollen sweaters and fudge. By the old waterfront, you'll find the Shetland Museum, showcasing Pictish carvings and Shetland lace shawls. Nearby you can see Fort Charlotte and the regal-looking town hall.

Keep your binoculars handy to scan for grey and common seals along Lerwick's beaches, as well as local birdlife such as Red-throated Divers, redshanks and curlews.

DAY 5 10th century Tórshavn

A visit to Streymoy in the Faroe Islands

Tórshavn is located on Streymoy, the largest of the Faroe Islands. Founded by Norsemen in the 10th century, Tórshavn - Thor's Harbour - is one of Northern Europe's oldest capitals.

Wander through the cobbled alleyways and delight in the colourful, turf-roofed houses found here. In the local museums, you can learn about the city's origins and the flora, fauna and geology of the Faroe Islands.

About half a mile out of town, the Svartafoss waterfall tumbles over mossy rocks. And as you walk along the seafront, look out for Eider Ducks and the distinctive Faroese Starling with its beige-tipped wings.

DAY 6 A day at sea

Enjoy a relaxing day at sea

Spend the day at your leisure as we sail towards Iceland. Savour the quiet moments, simply appreciating the peaceful feeling of being at sea or enjoy panoramic views and chat with fellow guests in the Explorer Lounge & Bar. This is a rare opportunity to disconnect and get a break from the modern world.

Feeling active? You can enjoy a workout in the gym or simply relax in the panoramic sauna while gazing out at the view. As

 The Small Cruise
Ship Collection
www.small-cruise-ships.com

01432 507 280 (within UK)

info@small-cruise-ships.com | small-cruise-ships.com



ever, our Expedition Team will be on hand to answer any questions you may have and offer insights about these Arctic islands.

DAY 7 Reykjavik and beyond

Enjoy Reykjavik at your leisure

As your expedition cruise reaches its conclusion, you still have one last terrific destination to explore - Iceland's art, culture and history-packed capital - Reykjavik.

Stroll along Laugavegur with its boutiques and galleries, admire the striking Hallgrimskirkja church and peruse Reykjavik Art Museum. Consider visiting the Blue Lagoon - one the true natural wonders of the world - and experience the blend of silica, algae and minerals in its famous geothermal waters.

This voyage is ideal to be combined with a circumnavigation of Iceland. See our Iceland Circular Saga -- Hamburg to Reykjavik via Windswept Isles of the North voyage, which conjoins the two cruises.

You can also join our Post-Programme and explore Iceland's beautiful south coast, with waterfalls, black sand beaches, geothermal pools and majestic mountains.

Please note:

Itineraries are subject to change.

The Small Cruise Ship Collection

www.small-cruise-ships.com



small-cruise-ships.com

info@small-cruise-ships.com

YOUR SHIP: FRIDTJOF NANSEN

YOUR SHIP: Fridtjof Nansen

VESSEL TYPE:

LENGTH:

PASSENGER CAPACITY:

BUILT/REFURBISHED:

Fridtjof Nansen is a small cruise ship specifically designed to be one of the most sustainable ships that can visit the Polar regions. Launched in 2020, The state of the art vessel features new and environmentally sustainable hybrid technology that will reduce fuel consumption and show the world that hybrid propulsion on large ships is possible. MS Fridtjof Nansen is the second of two hybrid ships to be launched cutting emissions by sailing with electrical propulsion. Hybrid technology, combined with the advanced construction of the hull and effective use of electricity on board will reduce fuel consumption and CO2-emissions on the ships by 20 percent. The future of shipping will be silent and emission free. MS Fridtjof Nansen will lead the way towards an even more sustainable way of traveling. Sailing on electrical power is not only a great benefit for the environment, but it will also enhance the impact of experiencing nature for the guests. The ship will be specially constructed for voyages in polar waters and serve as a comfortable basecamp at sea - bringing adventurers from all over the world to the most spectacular destinations in the most sustainable way. These ships combine state-of-the-art technology together with a premium onboard experience. All cabins are outside, half have

private balconies, and aft suites even boast private outdoor Jacuzzis, to soak up the stunning scenery in style. Facilities on board One of the most eye-catching exterior design features of the ships will be the two-level indoor/outdoor Observation Deck wrapped around the top of the ships' raked bow. In a vast area behind it, you'll find the core of the onboard experience: Amundsen Science Center. Packed with state of the art technology and high tech gadgets such as touch screens and science equipment, the immersive edutainment area will be the place guests and staff/crew meet, mingle and create a deeper understanding for the areas they explore. The flexible venue will feature lecture spaces, a small library, and speciality areas for workshops in photography, biology, and more. The stunning scenery will be reflected in a rich and comfortable interior design. Scandinavian materials from nature, such as granite, oak, birch and wool will be used to create relaxed and stylish cabins and public areas. All cabins are outside, 50 % will have private balconies, aft suites will feature private outdoor Jacuzzis with



The Small Cruise Ship Collection
www.small-cruise-ships.com

01432 507 280 (within UK)

info@small-cruise-ships.com | small-cruise-ships.com



 The Small Cruise
Ship Collection

www.small-cruise-ships.com

small-cruise-ships.com

info@small-cruise-ships.com

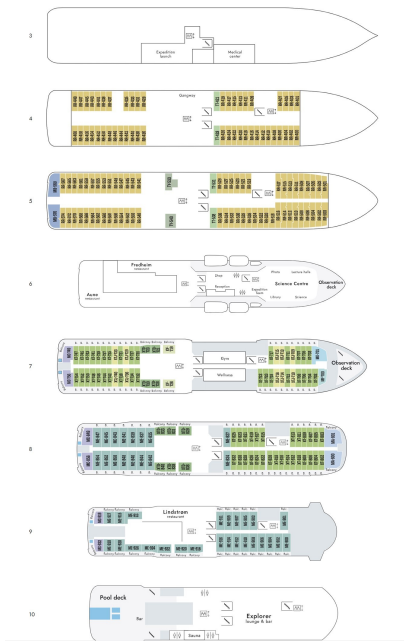
spectacular views.



small-cruise-ships.com

info@small-cruise-ships.com

INSIDE YOUR SHIP



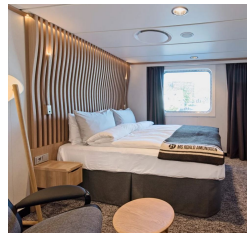
Arctic Superior. From



Expedition Suite. From



Polar Outside. From





The Small Cruise Ship Collection

www.small-cruise-ships.com



small-cruise-ships.com

info@small-cruise-ships.com

PRICING

04-May-2025 to 10-May-2025

Expedition Suite. From	£3264 GBP pp
Polar Outside. From	£2206 GBP pp
Arctic Superior. From	£2581 GBP pp



The Small Cruise Ship Collection

www.small-cruise-ships.com

01432 507 280 (within UK)

info@small-cruise-ships.com | small-cruise-ships.com