

The Small Cruise Ship Collection

www.small-cruise-ships.com

small-cruise-ships.com

info@small-cruise-ships.com

A WEEK IN THE ADRIATIC - 8 DAY CROATIA CRUISE

We are delighted to have chartered the 36-passenger Queen Eleganza for these seven night cruises exploring the attractive coastline between Zadar and Dubrovnik. Having operated in the region for many years this itinerary has been designed to explore the breathtaking natural beauty, intriguing history and stunning architecture of the spectacular coast and islands and we will visit some marvellous places which do not cater for the big ships. As we journey through the intense blue sea of the Adriatic the many highlights will include the historic cities of Zadar and Dubrovnik, with their history dating back through the Middle Ages to the Roman Era, and the delightful islands of Trogir, Hvar and Korcula where we will spend time walking through the beautiful old towns exploring the historic wonders. We will also visit areas of great natural beauty including Mljet where we will tour the National Park including its beautiful lakes. Each night we will remain moored in the picturesque harbours affording the opportunity to dine ashore on some evenings to enjoy the floodlit splendour and lively café society which is so atmospheric. This heady mix of islands and ports represents a fascinating itinerary combining as it does some 'must see' sites together with little known and rarely visited places that are perfectly suited for our vessel. Whether it be the towering cliffs and rich vegetation, scenic waterways and indentations or the wealth of historic buildings, this unique area has so much to offer and our itinerary will be appreciated by those who enjoy an eclectic mix of places, the company of a small group of like-minded travellers and an informal style of cruising.



ITINERARY

Day 1 London to Zadar, Croatia.

Fly by scheduled indirect flight to Zadar. On arrival transfer to the Queen Eleganza. Enjoy our welcome dinner on board this evening as we moor overnight. (D)

Day 2 Zadar & Sibenik.

Once a dominant city on the Adriatic Coast rivalling Venice, Zadar is today a treasured city that has preserved its historical core. Enjoy an afternoon walking tour strolling around the old town with its Roman columns and portals, Romanesque churches and Renaissance and Baroque palaces. Of particular interest are the 9th century circular Church of St Donat and the 13th century Romanesque cathedral. Sail in the late morning and spend the afternoon relaxing on board as we make our way to Sibenik. Here we enjoy an early evening walking tour through

The Small Cruise Ship Collection

www.small-cruise-ships.com

01432 507 280 (within UK)

info@small-cruise-ships.com | small-cruise-ships.com



The Small Cruise Ship Collection

www.small-cruise-ships.com

small-cruise-ships.com

info@small-cruise-ships.com

the historic town seeing the Cathedral of St James, the old city walls, and the theatre before returning to the ship for dinner. (B, L, D)

Day 3 Sibenik & Trogir.

This morning visit the majestic waterfalls of Krka. Enjoy a guided walk along wooden walkways and across bridges through this unique fjord like landscape with its multiple waterfalls and interesting flora and fauna. Return to Sibenik and spend the afternoon at sea as we sail to Trogir. Set within Medieval walls on a tiny island, linked by bridges to both the mainland and to the far larger Ciovo Island, we will enjoy a walking tour of this delightful port. The old town has retained many intact and beautiful buildings from its age of glory between the 13th and 15th centuries. In 1997 its profuse collection of Romanesque and Renaissance buildings earned it World Heritage status. We will moor overnight and have the opportunity to dine ashore this evening. (B, L)

Day 4 Hvar.

Sail after breakfast to Stari Grad where, upon arrival after lunch, we take a short coach ride across the island to the attractive Old Town of Hvar for a guided walk. We will begin in the main square which is the largest piazza in Dalmatia and see the cathedral, the Franciscan Monastery, and the Benedictine Nunnery where we hear about the aloe lace still produced today by the nuns. Return to the ship and enjoy dinner ashore in one of the charming local restaurants. (B, L)

Day 5 Korcula.

Set sail during breakfast and over lunch we arrive in Korcula, the reputed birthplace of the explorer Marco Polo. Here we will drive to the interior of the island, past olive groves and vineyards

offering views down to the coast below. During our visit to a winery we will learn more about the mainly white wines, which have been cultivated on the island for centuries, before enjoying a tasting. Returning to the town we will enjoy some time to walk along the crooked Medieval streets to the elegant squares which are flanked with palaces of the old nobility. We will be moored overnight in Korcula and you will be able to dine ashore independently in the Old Town this evening. (B, L)

Day 6 Mljet.

This morning we will continue our journey to Mljet. One of the few Dalmatian islands that was never ruled by Venice, this is apparent in the architecture and the absence of any sizeable historic town. What it lacks in great architecture it more than makes up for in natural beauty and there will be a tour to the National Park including its beautiful lakes, before we return to the ship for dinner. (B, L, D)

Day 7 Dubrovnik.

Arrive this afternoon in Dubrovnik, the “Pearl of the Adriatic”. After a short drive to Pile Gate, we will begin our guided walk through the unique Medieval Old Town of Dubrovnik, which was added to the UNESCO World Heritage List in 1979. See the major attractions such as the Rector’s Palace, the Romanesque-Gothic Dominican and Franciscan Monasteries, and the Sponza Palace. Return to the vessel and enjoy our farewell dinner on board. (B, L, D)

Day 8 Dubrovnik to London.

Disembark this morning and transfer to Dubrovnik Airport for our scheduled flight to London. (B)

Please Note:

The Small Cruise Ship Collection

www.small-cruise-ships.com

01432 507 280 (within UK)

info@small-cruise-ships.com | small-cruise-ships.com



The Small Cruise Ship Collection

www.small-cruise-ships.com



small-cruise-ships.com

info@small-cruise-ships.com

Itineraries are subject to change.



The Small Cruise Ship Collection

www.small-cruise-ships.com

01432 507 280 (within UK)

info@small-cruise-ships.com | small-cruise-ships.com



The Small Cruise Ship Collection

www.small-cruise-ships.com

small-cruise-ships.com

info@small-cruise-ships.com

YOUR SHIP: QUEEN ELEGANZA

YOUR SHIP: Queen Eleganza

VESSEL TYPE:

LENGTH:

PASSENGER CAPACITY:

BUILT/REFURBISHED:

For our cruises along the Adriatic coast, we are delighted to have the newly built Queen Eleganza. This beautifully crafted vessel is one of the finest Croatian flagged vessels of her kind and we believe she is the perfect vessel from which to explore the Croatian coast. Carrying a maximum of just 36 guests, there is the added benefit of a relaxed and intimate atmosphere on board. The Sun Deck, with its comfortable sun loungers, is the perfect place to watch the passing scenery and the team of friendly Croatian crew will provide you with excellent service and hospitality throughout the ship. To enhance your voyage further there is also a Cruise Director on board. Dining on board is a casual affair and the menus feature locally sourced fresh food including fish. When dining ashore independently, your knowledgeable Cruise Director will recommend popular local restaurants. **AIR-CONDITIONING** All cabins and public rooms have air-conditioning. **BAR/BEVERAGES** Wine, beer and soft drinks at lunch and dinner are included in your holiday price. For other drinks consumed throughout your journey you will receive a final bill to settle at the end of your journey. Complimentary bottles of mineral water will be placed in your cabin daily and near reception before an excursion. **CABINS** The 18 cabins are

equipped with air conditioning/heating, a wardrobe, drawers, radio, a flat screen television, a hairdryer and safety deposit box. Most cabins also feature a dressing table and chair. The cabins on the Lower Deck all have two portholes whereas on the Main Deck, the category 3 cabins have three portholes and the category 5 cabin has four portholes. The category 2 and 4 cabins on the Main Deck benefit from a large picture window offering wonderful views. Cabins measure between 12 and 18 square metres, with Category 5 measuring 26 square metres. The cabins have fixed twin or double beds and the configuration cannot be changed. Each cabin also has an en-suite bathroom with shampoo /shower gel dispenser. Please note that the movement of the ship can cause small amounts of water to collect on your bathroom floor. Please note that bathrobes and slippers are not provided. **DINING, DRINKING & DIETARY REQUIREMENTS** Meals on board are either buffet style or served and there is one sitting with an open seating arrangement. When the weather permits, lunch and dinner may be served in the covered outside area of the Sun Deck. Please be advised that, as there is not always a choice at meal times it is imperative that you advise any special dietary requests, such as vegetarian, gluten free, low salt etc. to Noble Caledonia (in writing) in advance. Please also advise if you do not, or cannot, eat fish and shellfish as these feature regularly on the lunch and dinner menus. We regret that the ship is unable to guarantee special requests and is not equipped to prepare or serve kosher or halal cuisine. Complimentary self-service tea and coffee, with fruit and biscuits, are available in the restaurant 24 hours a day. On nights when you are free to dine independently ashore, if

The Small Cruise Ship Collection
www.small-cruise-ships.com

01432 507 280 (within UK)

info@small-cruise-ships.com | small-cruise-ships.com

The Small Cruise Ship Collection

www.small-cruise-ships.com

small-cruise-ships.com

info@small-cruise-ships.com

instead you wish to stay on board for dinner, this is possible at a rate of €25 per person each time, which will be added to your onboard account. 24 hours advance notice is required.

DISABLED FACILITIES The ship does not have facilities for disabled or wheelchair dependent passengers. The stairs between decks are steep and there is no lift or chair lift on board.

DOCTOR There is no doctor on board. Should you be in need of medical assistance, please contact a member of the crew who are first aid trained, or the Cruise Director.

ELECTRICITY The cabins feature 220 volt current, with sockets accepting 2 round-pin (European style) sockets. There are no sockets in the bathrooms. We recommend taking a universal adaptor.

INTERNET The ship offers a free Wi-Fi connection in the public areas, but not in the cabins. Depending on the ship's location, there may be times when the connection is very slow or is disrupted and the same level of connectivity that you enjoy at home cannot be expected on board.

LANGUAGE All members of the crew speak English.

LAUNDRY SERVICE Due to the size of the ship there is no laundry service on board.

PUBLIC AREAS

Main Deck: Reception is located on the Main Deck.

Upper Deck: On the Upper Deck you will find the bar, restaurant, lounge, and public restrooms. The lounge has a small library of books, games and DVDs. The tea/coffee station is located in the restaurant here.

Sun Deck: The Sun Deck has sun loungers and seating for outdoor dining (weather permitting).

SMOKING Smoking is restricted to the designated open areas only. Smoking is prohibited in all other areas including cabins and the



restaurant.

The Small Cruise Ship Collection

www.small-cruise-ships.com

01432 507 280 (within UK)

info@small-cruise-ships.com | small-cruise-ships.com

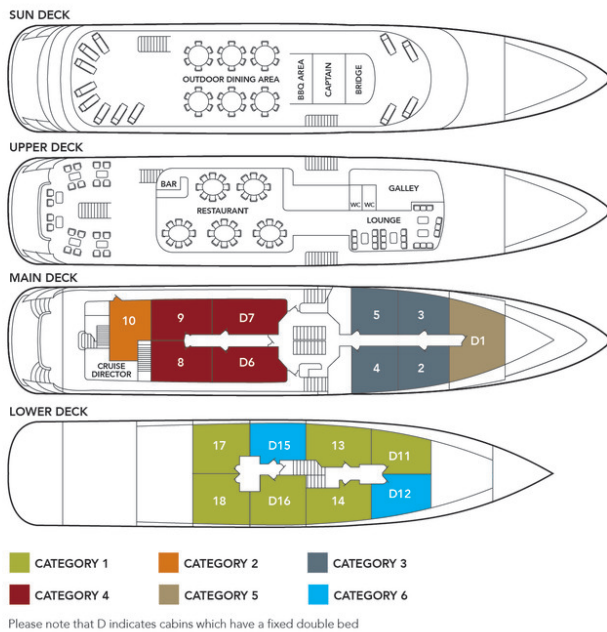
The Small Cruise Ship Collection

www.small-cruise-ships.com

small-cruise-ships.com

info@small-cruise-ships.com

INSIDE YOUR SHIP



Category 1



Category 2



Category 3



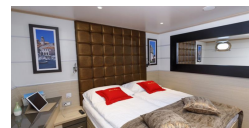
Category 4



Category 5



Category 6 Sole





The Small Cruise Ship Collection

www.small-cruise-ships.com

small-cruise-ships.com

info@small-cruise-ships.com

PRICING

25-Sep-2024 to 02-Oct-2024

| | |
|-----------------|--------------|
| Category 6 Sole | £3195 GBP pp |
| Category 1 | £3195 GBP pp |
| Category 2 | £3195 GBP pp |
| Category 3 | £3495 GBP pp |
| Category 4 | £3895 GBP pp |
| Category 5 | £4195 GBP pp |

 The Small Cruise Ship Collection
www.small-cruise-ships.com

01432 507 280 (within UK)

info@small-cruise-ships.com | small-cruise-ships.com