



The Small Cruise Ship Collection
www.small-cruise-ships.com

small-cruise-ships.com

info@small-cruise-ships.com

WEST GREENLAND ICE ODYSSEY - GLACIERS AND ICEBERGS

Immerse yourself along the dramatic coast of West Greenland, exploring deep into fjords and stunning islands. This trip features the best sites and ice-laden realms of West Greenland in just 10 days. You'll have opportunities to visit such towns as Sisimiut, Ilulissat and possibly Ittiteq, all rich in local culture. Find yourself coasting by massive glaciers and sculpted icebergs while enjoying all the comforts Ultramarine has to offer. At the peak of summer months, you'll enjoy long sunny days, clear vistas, and opportunities to see ringed, harp and possibly hooded seals, as well as various Arctic birds, including the black guillemot, Arctic tern, northern fulmar and snow bunting. It's also possible, in this region, to encounter whale species, such as humpback, minke and fin whales.



ITINERARY

Day 1 Arrive in Toronto, Canada

Arrive at Pearson International Airport and make your way to your included hotel. The rest of the day is yours to explore Toronto, one of the most cosmopolitan and multicultural cities in



The Small Cruise Ship Collection

www.small-cruise-ships.com

small-cruise-ships.com

info@small-cruise-ships.com

Canada.

Day 2 Fly to Kangerlussuaq and Embark

This morning you'll catch your charter flight to Kangerlussuaq, where you'll board your vessel and begin your expedition. Get ready for a great adventure ahead! Expect a welcome and safety briefing from your Expedition Leader. Quark Expeditions' core belief in working closely with our local partners will enhance every experience as we explore alongside local experts. We'll draw on our team's collective knowledge and expertise to deliver incredible experiences.

Days 3 to 5 Disko Bay

Disko Bay is a wide, southeastern inlet of Baffin Bay and is the largest open bay in western Greenland. Try to get out on deck as we navigate into this iconic bay where whales are often spotted. Disko Bay is full of exciting destinations for us to explore. We will almost certainly visit the community of Illulissat, which is situated at the head of outlet fjord for Sermeq Kujalleq (Jakobshavn Glacier), known for discharging 35 billion tons of ice each year. Declared a UNESCO World Heritage Site in 2004, the fjord is immensely beautiful and we will encourage you to explore it via one of the many marked hiking trails. Another area we will consider for this itinerary is the wild beauty of Equip Sermia or Torsukatak Fjords, located in the northeast corner of Disko Bay. Both of these remote areas offer fantastic vistas of large active glacial faces and provide plenty of opportunities for hiking, paddling, and Zodiac cruising. This is also an area where, if conditions allow, we will consider utilizing our twin-engine helicopters to get you in the air to appreciate the immensity of this region.

Days 6 to 8 Qeqqata

Qeqqata (meaning centre) municipality is Greenland's second smallest administrative region. Situated in the middle of the country's western coast, Qeqqata is home to almost 20% of Greenland's populace, most of whom reside in Sisimiut and Maniitsoq. During these two days your expedition team will work with our local partners to curate a balance of community and wilderness-focused activities. We are likely to visit Sisimiut, where you can wonder through the open air museum, participate in local tastings or join a hiking group to venture beyond the town limits along one of many incredible hiking trails on Sisimiut's doorstep. This is where we will also offer the (paid) mountain biking activity. Further south, our team will seek to take you beyond the ordinary and into these fjords for magical one-of-a-kind experiences, one of which is Eternity Fjord, which is home to the tallest mountains in all of West Greenland. Another fascinating community in this region is Itilleq. Surrounded by sea and mountains, Itilleq is located about a mile (2 km) above the Arctic Circle. The Quark Expeditions team has enjoyed a longstanding relationship with the people of Itilleq, who often gather and invite our staff and guests for a pick-up game of soccer or football.

Day 9 Kangerlussuaq Disembarkation

Today, we disembark in Kangerlussuaq, formerly known as Søndre Strømfjord, and transfer you to your charter flight to Toronto, where you'll spend the night in your included hotel.

Day 10 Toronto, Canada

You may make your way to the airport to connect with your onward flight, or stay longer if you have booked additional accommodations.

Please Note:

The Small Cruise Ship Collection

www.small-cruise-ships.com

01432 507 280 (within UK)

info@small-cruise-ships.com | small-cruise-ships.com



The Small Cruise Ship Collection

www.small-cruise-ships.com

small-cruise-ships.com

info@small-cruise-ships.com

Itineraries are subject to change.



The Small Cruise Ship Collection

www.small-cruise-ships.com

01432 507 280 (within UK)

info@small-cruise-ships.com | small-cruise-ships.com

The Small Cruise Ship Collection

www.small-cruise-ships.com



small-cruise-ships.com

info@small-cruise-ships.com

YOUR SHIP: ULTRAMARINE

YOUR SHIP: Ultramarine

VESSEL TYPE:

LENGTH:

PASSENGER CAPACITY:

BUILT/REFURBISHED:

Ultramarine is designed to go beyond the familiar in polar exploration, to discover new places, and to immerse you in the best the region has to offer. Equipped with two twin-engine helicopters, Ultramarine offers the most robust portfolio of adventure activities in the industry, the most spacious suites in its category, breathtaking public spaces, and more outdoor wildlife viewing spaces than other expedition ships its size. It also features an innovative mix of sustainability features that exceed all industry standards. With all this and more, Ultramarine is set to deliver the ultimate polar expedition experience. Cabin - Spacious Entryways, Personal Safes, Spa-inspired Bathrooms, Heated Bathroom Floors, Premium beds and bed linens, Convertible Beds, Individual Temperature Controls, HD Flatscreen Televisions, Oversized Windows With Sweeping Views, Electrical Supply: 220V Aboard - 2 Dining Areas, 4 Bars, Panorama Lounge, Lecture Theater, Library, Polar Boutique, Spa & Fitness Center, Oceanview Sauna, Zodiac Hangar with 4 Embarkation Points, 2 Ready Rooms with Individual Lockers, Walkaround Deck, Bridge Activities - Flightseeing (Included), Zodiac Cruising (Included), Hiking (Included), Lectures (Included), Camping (Optional), Sea

Kayaking (Optional), Stand-Up Paddleboarding (Optional), Paddle Excursions (Optional), Cross Country Skiing (Optional), Mountaineering



(Optional)

The Small Cruise Ship Collection

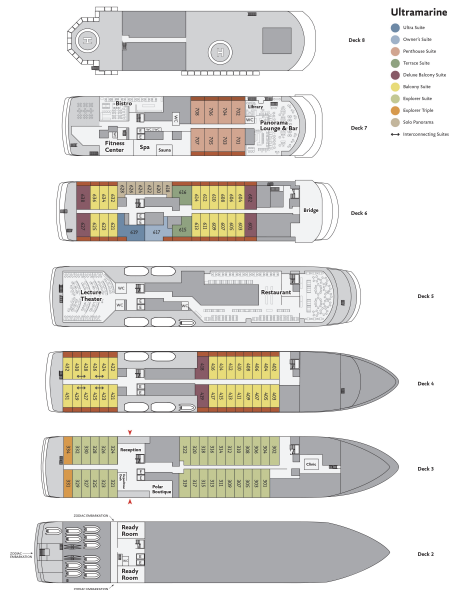
www.small-cruise-ships.com



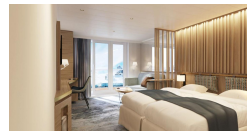
small-cruise-ships.com

info@small-cruise-ships.com

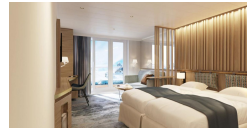
INSIDE YOUR SHIP



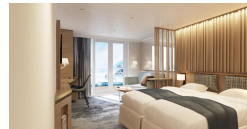
Balcony Suite



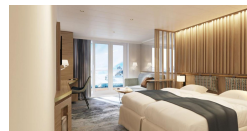
Deluxe Balcony Suite



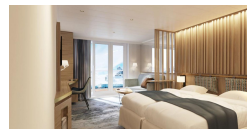
Explorer Suite



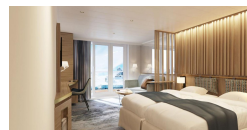
Explorer Triple



Owner's Suite



Penthouse Suite



Solo Panorama

Terrace Suite



The Small Cruise Ship Collection

www.small-cruise-ships.com



small-cruise-ships.com

info@small-cruise-ships.com

PRICING

10-Aug-2025 to 19-Aug-2025

Explorer Triple	£6723 GBP pp
Explorer Suite	£8798 GBP pp
Terrace Suite	£11869 GBP pp
Solo Panorama	£12284 GBP pp
Balcony Suite	£16367 GBP pp
Deluxe Balcony Suite	£22742 GBP pp
Penthouse Suite	£24568 GBP pp
Owner's Suite	£31374 GBP pp
Ultra Suite	£35026 GBP pp