



The Small Cruise  
Ship Collection

www.small-cruise-ships.com

small-cruise-ships.com

info@small-cruise-ships.com

## WESTERN GALAPAGOS (LA PINTA)

Fernandina Island is regarded as one of the most pristine island environments anywhere in the world, where life has evolved in its natural state, far from the intervention of Man. From the west, we venture back to the Central Islands, landing at the intriguing red beach of Rábida and seeking out the land iguanas of Cerro Dragón. On Santa Cruz, we visit the Charles Darwin Research Station and get up close to giant tortoises in their natural environment. In the south, we learn about the Galápagos very own 'murder mystery', spot flamingoes and snorkel at one of the best sites in the archipelago: Champion Islet. Back in the central islands, we explore the placid bay of Santa Fe as well as the dramatic cliffs of South Plaza. Whether it's the western, central or southern islands we visit, all the crew aboard La Pinta will do our utmost to ensure your Galápagos experience is truly, deeply moving and memorable. Please Note: During Peak Season (Dec 21 - 29 & Dec 29 - Jan 04) a surcharge applies.



### ITINERARY

#### Day 1 - Friday - Baltra Island and North Seymour Island

Our adventure begins with a morning flight to Baltra Island (additional charge) and immediate transfer to the dock to board Yacht La Pinta. There's a welcome introductory briefing, boat drill, cabin assignment and then lunch. Following an afternoon disembarkation, we enjoy a walk along the coast and the interior of the beautiful flat island, observing numerous bird colonies as well as sea lions and land iguanas. There are opportunities for coastal exploration by dinghy. Evening briefing, welcome cocktail and dinner.

#### Day 2 - Saturday - Punta Vicente Roca (Isabela Island) and Punta Espinoza (Fernandina Island)

Since there is no landing site at this location, the coastal exploration is by dinghy, while the naturalist guide explains the dramatic geology of the area, with remains of lava flows and tuff stone layers. There is abundant wildlife and, depending on the conditions of the ocean, we'll be able to snorkel along the cliffs,



The Small Cruise  
Ship Collection

www.small-cruise-ships.com

01432 507 280 (within UK)

info@small-cruise-ships.com | small-cruise-ships.com



## The Small Cruise Ship Collection

[www.small-cruise-ships.com](http://www.small-cruise-ships.com)

[small-cruise-ships.com](http://small-cruise-ships.com)

[info@small-cruise-ships.com](mailto:info@small-cruise-ships.com)

hopefully in the company of green sea turtles. In the afternoon, we visit the youngest and most pristine island of the archipelago, Fernandina, one of many people's all-time favourites. Punta Espinoza has an amazing combination of barrenness and abundant wildlife. Highlights include hawks, penguins, the flightless cormorant and astounding views of the surrounding volcanic landscapes.

#### Day 3 - Sunday - Urbina Bay and Tagus Cove (Isabela Island)

After breakfast, we disembark at Urbina Bay, on the western side of Isabela Island, the result of an uplifting of the ocean floor. Here you can find corals, shells, and large and very colourful Galápagos land iguanas, giant tortoises (occasionally). Navigating the Bolívar Channel, there are good chances of spotting species of whales. On the northwest of Isabela, secluded Tagus Cove provided a favourite anchorage for pirates and whalers over the centuries, and today makes a great visitor site. An uphill hike takes us to the back of Darwin Crater, filled with salt water. We can snorkel or ride kayaks amid the dramatic landscape before our hike.

#### Day 4 - Monday - Rábida Island and Cerro Dragón-Dragon Hill (Santa Cruz Island)

In the morning, we disembark at Rábida Island's red-coloured beach. A stroll along the beach allows us to observe marine iguanas, mockingbirds, yellow warblers and several species of Darwin's finches. This is a great place to snorkel from the beach. For those non-snorkelers, we can ride our glass-bottom boat for a submarine exploration. The north shore of Santa Cruz hosts the fascinating landscapes of Cerro Dragón (Dragon Hill). Our walk includes circling a brackish water lagoon frequented by lagoon birds, while further inland, the trail offers a beautiful view of the bay and the western islands of the archipelago, as well as

the chance of observing land iguanas.

#### Day 5 - Tuesday - Puerto Ayora, Charles Darwin Research Station and Highlands of Santa Cruz Island

The morning visit heads to the Charles Darwin Research Station and the giant tortoise pens within an impressive giant prickly-pear cactus forest. These are the headquarters of scientific investigation, conservation and the National Park administration. A delicious lunch is served at the poolside of the Finch Bay Eco Hotel. After lunch, we wind up to the highlands of Santa Cruz Island by vehicle. This is a great place to look for the brilliant Vermilion Flycatcher and the endemic Scalesia trees. From December to mid-April and July to December a visit to observe giant tortoises in the wild may be included, if weather conditions are good.

#### Day 6 - Wednesday - Post Office Bay/Punta Cormorant (Floreana Island)

After breakfast, we land at Post Office Bay to visit the historic barrel that has served as a post office in the archipelago for over two centuries. Panga rides along the maze of channels on Floreana's north shore can also be enjoyed. There's great snorkelling from the beach as well. Before disembarking at Punta Cormorant we can snorkel or ride our glass-bottom boat along the coast of an extinct cone called "Champion Islet". Our visit to Punta Cormorant takes in an olivine-crystal beach for an easy walk by a brackish water lagoon where bird species like greater flamingos may be observed. On the other side of the island, we come to a white-sand beach where sea turtles come out at night to nest.

#### Day 7 - Thursday - Baltra

Our journey ends at Baltra Island, where we transfer to the airport to take the flight back to the mainland. Baltra's flat



The Small Cruise Ship Collection

[www.small-cruise-ships.com](http://www.small-cruise-ships.com)

**01432 507 280** (within UK)

[info@small-cruise-ships.com](mailto:info@small-cruise-ships.com) | [small-cruise-ships.com](http://small-cruise-ships.com)





substrate (due to its uplifted origin) is the reason why the island was chosen back in the 1940s as the location to building an airport.

**Please Note:**

Galápagos Itineraries are subject to change due to weather, logistical, Galápagos Park regulations or operational reasons. · Please remember that the exact route and programme may vary according to weather and ocean conditions and the wildlife we encounter. It's also subject to change without previous notice due mainly to readjustment of the National Park policies and regulations. \- Dry landing: guests step from the dinghy onto rocks or a dock. \- Wet landing: as the dinghy edges onto a sandy beach, guests step into around 20 cm (8 inches) of water and wade ashore.



## The Small Cruise Ship Collection

[www.small-cruise-ships.com](http://www.small-cruise-ships.com)



[small-cruise-ships.com](http://small-cruise-ships.com)

[info@small-cruise-ships.com](mailto:info@small-cruise-ships.com)

### YOUR SHIP: LA PINTA

<b>YOUR SHIP:</b>	<b>La Pinta</b>
<b>VESSEL TYPE:</b>	<b>Small Ship</b>
<b>LENGTH:</b>	<b>63 metres</b>
<b>PASSENGER CAPACITY:</b>	<b>48 (in 24 cabins)</b>
<b>BUILT/REFURBISHED:</b>	<b>1983 / refurbished 2007</b>



After intense days of wildlife exploration, yacht La Pinta provides a haven of relaxation and tranquility with tastefully appointed accommodations and all the facilities for a stylish yet informal ambiance. A full week discovery trip to the Galapagos Islands aboard La Pinta allows encounters with unique fauna, like the famous giant Galapagos tortoises in the wild, land and marine iguanas, flamingos, penguins, blue-footed boobies and the famous Darwin's finches. La Pinta guests will cover all aspects of the Galapagos: discovery, adventure, environmental interpretation, aquatic activities, relaxation, superb service and great dining. Naturalist Guides enhance their interpretative skills with the use of state-of-the-art-expedition equipment. Our staff embraces a spirit of adventure, while at the same time ensures that you always travel in comfort and safety.



# The Small Cruise Ship Collection

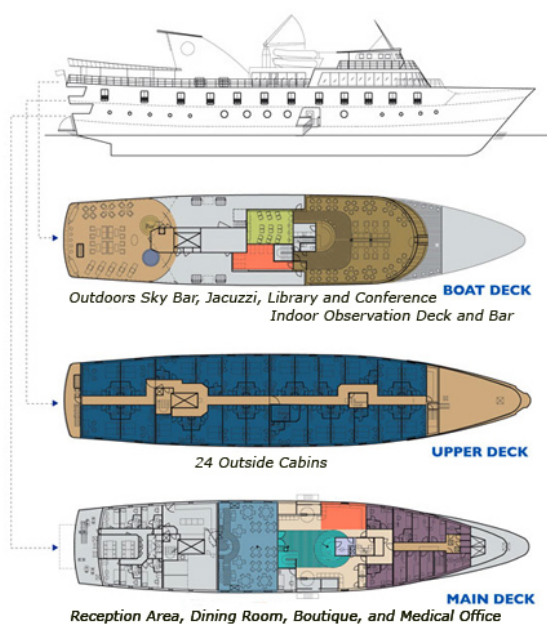
[www.small-cruise-ships.com](http://www.small-cruise-ships.com)



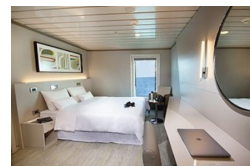
[small-cruise-ships.com](http://small-cruise-ships.com)

[info@small-cruise-ships.com](mailto:info@small-cruise-ships.com)

## INSIDE YOUR SHIP



Luxury Cabin/Captain Cabin







# The Small Cruise Ship Collection

[www.small-cruise-ships.com](http://www.small-cruise-ships.com)

[small-cruise-ships.com](http://small-cruise-ships.com)

[info@small-cruise-ships.com](mailto:info@small-cruise-ships.com)

## PRICING

### 25-Apr-2025 to 01-May-2025

Luxury Cabin/Captain Cabin	£6294 GBP pp
----------------------------	--------------

### 09-May-2025 to 15-May-2025

Luxury Cabin/Captain Cabin	£6294 GBP pp
----------------------------	--------------

### 23-May-2025 to 29-May-2025

Luxury Cabin/Captain Cabin	£6294 GBP pp
----------------------------	--------------

### 06-Jun-2025 to 12-Jun-2025

Luxury Cabin/Captain Cabin	£6294 GBP pp
----------------------------	--------------

### 20-Jun-2025 to 26-Jun-2025

Luxury Cabin/Captain Cabin	£6294 GBP pp
----------------------------	--------------

### 04-Jul-2025 to 10-Jul-2025

Luxury Cabin/Captain Cabin	£6294 GBP pp
----------------------------	--------------

### 18-Jul-2025 to 24-Jul-2025

Luxury Cabin/Captain Cabin	£6294 GBP pp
----------------------------	--------------

### 01-Aug-2025 to 07-Aug-2025

Luxury Cabin/Captain Cabin	£6294 GBP pp
----------------------------	--------------

### 15-Aug-2025 to 21-Aug-2025

Luxury Cabin/Captain Cabin	£6294 GBP pp
----------------------------	--------------

### 29-Aug-2025 to 04-Sep-2025

Luxury Cabin/Captain Cabin	£6294 GBP pp
----------------------------	--------------

### 12-Sep-2025 to 18-Sep-2025

Luxury Cabin/Captain Cabin	£6294 GBP pp
----------------------------	--------------

### 26-Sep-2025 to 02-Oct-2025

Luxury Cabin/Captain Cabin	£6294 GBP pp
----------------------------	--------------

### 10-Oct-2025 to 16-Oct-2025

Luxury Cabin/Captain Cabin	£6294 GBP pp
----------------------------	--------------

### 24-Oct-2025 to 30-Oct-2025

Luxury Cabin/Captain Cabin	£6294 GBP pp
----------------------------	--------------

### 07-Nov-2025 to 13-Nov-2025

Luxury Cabin/Captain Cabin	£6294 GBP pp
----------------------------	--------------

### 21-Nov-2025 to 27-Nov-2025

Luxury Cabin/Captain Cabin	£6294 GBP pp
----------------------------	--------------

### 05-Dec-2025 to 11-Dec-2025

Luxury Cabin/Captain Cabin	£6294 GBP pp
----------------------------	--------------

### 19-Dec-2025 to 25-Dec-2025

Luxury Cabin/Captain Cabin	£6294 GBP pp
----------------------------	--------------

### ADDITIONAL CHARGES:

Galapagos National Park  
admission fee and transit Control  
Card for Galapagos 120 USD pp



[www.small-cruise-ships.com](http://www.small-cruise-ships.com)

01432 507 280 (within UK)

[info@small-cruise-ships.com](mailto:info@small-cruise-ships.com) | [small-cruise-ships.com](http://small-cruise-ships.com)