



# The Small Cruise Ship Collection

www.small-cruise-ships.com



small-cruise-ships.com

info@small-cruise-ships.com

## WILD ALASKA ODYSSEY SMALL SHIP CRUISE

On this unique itinerary aboard our popular M/V Alaskan Dream, you'll embark or disembark in the charming Alaska town of Wrangell. Doing so grants you extended time to delve into a place rarely visited by travelers. Despite its small population and remote location, Alaska Airlines offers daily flights to the town, making it an easy connection from Seattle. The itinerary is largely wilderness based, with a port call in the Alaska Native village of Kake for immersion in the inspiring Tlingit culture.



### ITINERARY

Day 1 Sitka & Fin Island Lodge



The Small Cruise Ship Collection

www.small-cruise-ships.com

01432 507 280 (within UK)

info@small-cruise-ships.com | small-cruise-ships.com



## The Small Cruise Ship Collection

[www.small-cruise-ships.com](http://www.small-cruise-ships.com)

[small-cruise-ships.com](http://small-cruise-ships.com)

[info@small-cruise-ships.com](mailto:info@small-cruise-ships.com)

Welcome to beautiful Sitka -- the only community in Southeast Alaska that faces the open ocean waters of the Gulf of Alaska. We encourage you to arrive early and explore the community's rich culture, history, and biodiversity. Shortly after embarking, you'll enjoy a feast of Alaska crab\*, wild salmon cooked over an alder wood-fired grill, and prime rib at the company's privately-owned Fin Island Lodge.

\*Subject to local processor availability

### Day 2 Chatham Strait/West Admiralty Island

Spend the day exploring remote, Inside Passage wilderness. Hike a rainforest trail featuring towering spruce and hemlock trees and lush undergrowth. Your knowledgeable guide will provide commentary on the indigenous plants and wildlife of the area. Explore Chatham Strait alongside Admiralty Island, a place Tlingit Alaska Natives call Kootznoowoo, which translates to "Fortress of the Bear." This remarkable island is home to the highest density of brown bears in North America and boasts a large population of nesting bald eagles.

### Day 3 Glacier Bay National Park

This remarkable national park fjord extends 65 miles, contains tidewater glaciers, and provides pristine habitat for a wide array of wildlife, including both brown and black bears, wolves, mountain goats, Steller sea lions, and humpback whales. The highlight for many is the Margerie or John Hopkins Glaciers, which are known for their dramatic calving displays.

### Day 4 Wilderness Exploration

Your captain and expert expedition team will select the day's remote wilderness adventure based on factors like weather and wildlife sightings in the area. Whether you're lacing up your boots for a wilderness hike or beach trek, or grabbing a paddle to navigate remote shorelines, one thing's for sure: you're in for an unforgettable Alaska adventure that is tailor-made for your group.

### Day 5 Tracy or Endicott Arm

Journey through Tracy or Endicott Arm in the Tracy Arm-Fords Terror Wilderness, a place the famous naturalist, John Muir, referred to as, "A wild, unfinished Yosemite." Renowned for its glaciers, pristine waterfalls, towering icebergs, abundant harbor seals, and granite cliffs that rise from sea level to 4,000 feet, this wilderness is often referred to by locals as one of the most scenic areas in the state.

### Day 6 Kake/Frederick Sound

View the world's tallest totem pole, an artist demonstration, and experience the inspiring culture of the Tlingit in the Alaska Native village of Kake. Later, explore the Alaska wilderness in picturesque Frederick Sound -- an area humpback whales and other wildlife frequent. Humpbacks are famous for behavior that lends itself to incredible viewing and photography, such as tail lobbing, lunge feeding, pectoral slapping, breaching, and graceful dives that showcase their massive flukes. Other

The Small Cruise Ship Collection  
[www.small-cruise-ships.com](http://www.small-cruise-ships.com)

01432 507 280 (within UK)

[info@small-cruise-ships.com](mailto:info@small-cruise-ships.com) | [small-cruise-ships.com](http://small-cruise-ships.com)





opportunities for in-depth exploration may include the protected waters or shores of Security Bay, Skanax Bay, Pybus Bay, and The Brothers islands.

#### Day 7 Wilderness Exploration

The final full day of your expedition includes an opportunity for a remote hike in the heart of the Alaska wilderness and more unscripted adventure. One of the major hallmarks of an Alaskan Dream Cruises experience is our flexibility. "Wilderness Exploration" days carry an exciting and unique spirit of adventure and discovery aboard a nimble vessel that is ideal for delving deep into places few Alaska travelers get to experience.

#### Day 8 Wrangell

Disembark in the beautiful Southeast Alaska community of Wrangell. Transportation to your lodging or the airport is complimentary.

Please note:

Itineraries are subject to change.



The Small Cruise  
Ship Collection

[www.small-cruise-ships.com](http://www.small-cruise-ships.com)



[small-cruise-ships.com](http://small-cruise-ships.com)

[info@small-cruise-ships.com](mailto:info@small-cruise-ships.com)

## YOUR SHIP: ALASKAN DREAM

**YOUR SHIP:**

**Alaskan Dream**

**VESSEL TYPE:**

**LENGTH:**

**PASSENGER CAPACITY:**

**BUILT/REFURBISHED:**

The Alaskan Dream is an innovative, streamlined catamaran design allows the vessel to easily navigate narrow channels and passages like a yacht, while at the same time providing the comforts you would expect aboard a much larger ship. Cabins all have extra-large viewing windows. The public lounge faces forward with the same view as the Captain, affording spectacular views of the scenery, ports and wildlife along the way. There is plenty of viewing space on deck, and inside, and there are enough skiffs for everyone to disembark. Kayaks are provided too, and the crew will help you enjoy these adventure cruises in any way they can. Select cabins can accommodate a 3rd or 4th guest



The Small Cruise  
Ship Collection

[www.small-cruise-ships.com](http://www.small-cruise-ships.com)

**01432 507 280** (within UK)

[info@small-cruise-ships.com](mailto:info@small-cruise-ships.com) | [small-cruise-ships.com](http://small-cruise-ships.com)



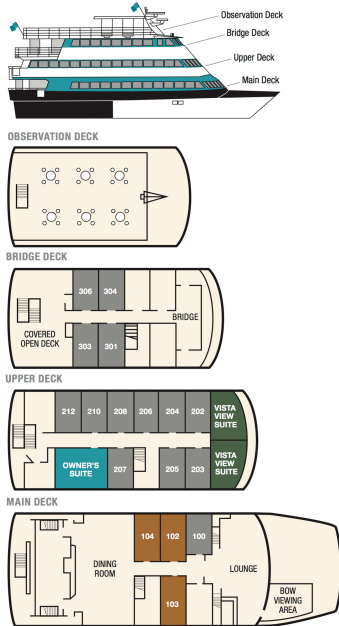
# The Small Cruise Ship Collection

www.small-cruise-ships.com

small-cruise-ships.com

info@small-cruise-ships.com

## INSIDE YOUR SHIP

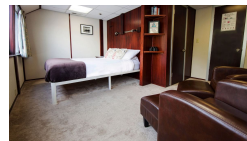


Category AA



Category AAA

Owner's Suite



Vista View





# The Small Cruise Ship Collection

www.small-cruise-ships.com



small-cruise-ships.com

info@small-cruise-ships.com

## PRICING

### 08-Jun-2025 to 15-Jun-2025

Vista View	£7599 GBP pp
Owner's Suite	£6319 GBP pp
Category AAA	£5039 GBP pp
Category AA	£4559 GBP pp

### 15-Jun-2025 to 22-Jun-2025

Vista View	£7599 GBP pp
Owner's Suite	£6319 GBP pp
Category AAA	£5039 GBP pp
Category AA	£4559 GBP pp

### 17-Aug-2025 to 24-Aug-2025

Vista View	£7599 GBP pp
Owner's Suite	£6319 GBP pp
Category AAA	£5039 GBP pp
Category AA	£4559 GBP pp

### 24-Aug-2025 to 31-Aug-2025

Vista View	£7599 GBP pp
Owner's Suite	£6319 GBP pp
Category AAA	£5039 GBP pp
Category AA	£4559 GBP pp

### 14-Jun-2026 to 21-Jun-2026

Vista View	£7839 GBP pp
Owner's Suite	£6559 GBP pp
Category AAA	£5199 GBP pp
Category AA	£4719 GBP pp

### 21-Jun-2026 to 28-Jun-2026

Category AA	£4719 GBP pp
Category AAA	£5199 GBP pp
Vista View	£7839 GBP pp
Owner's Suite	£6559 GBP pp

### 09-Aug-2026 to 16-Aug-2026

Vista View	£7839 GBP pp
Owner's Suite	£6559 GBP pp
Category AAA	£5199 GBP pp
Category AA	£4719 GBP pp

### 16-Aug-2026 to 23-Aug-2026

Category AA	£4719 GBP pp
Category AAA	£5199 GBP pp
Vista View	£7839 GBP pp
Owner's Suite	£6559 GBP pp