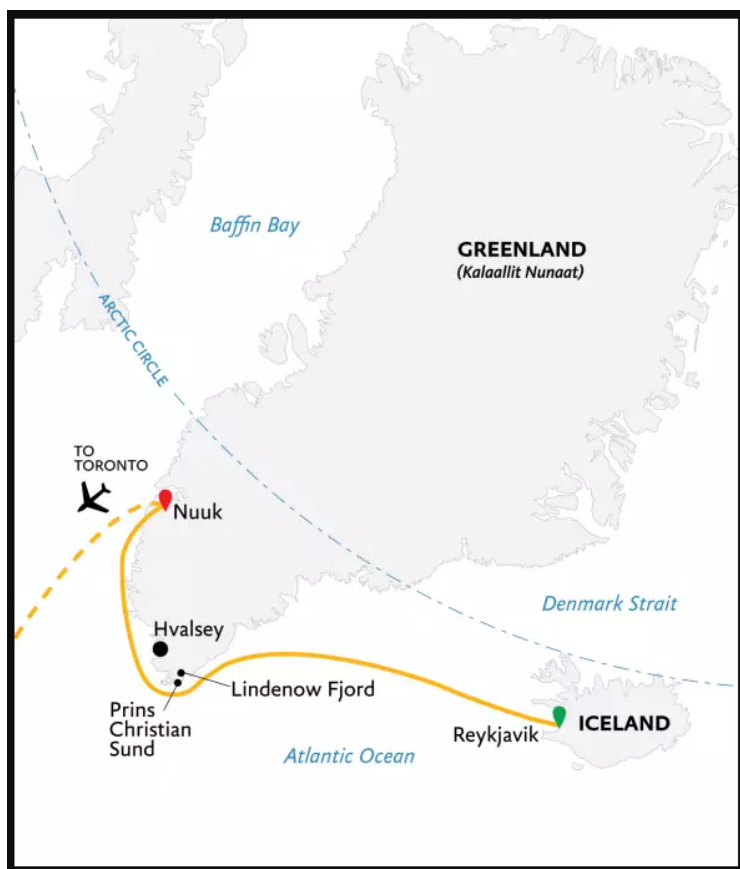




WILD FJORDS OF SOUTH GREENLAND - LAND OF THE VIKINGS

Guests who book the 13-day Wild Fjords of South Greenland: Land of the Vikings explore this fascinating region on the game-changing Ultramarine, the newest addition to our fleet. Enjoy an ultra-immersive exploration of Greenland's serene shores, sailing the icy waters of the rarely traveled southeast coast, traveling down to the lush southern tip, and stopping to visit local communities, Viking sites, and observe imposing glaciers on the south and southeast coasts, which are the featured regions of this voyage. While onboard, guests can take advantage of Ultramarine's luxurious suites, spa and wellness amenities and incredible wilderness viewing spaces. Ultramarine enables us to offer guests more Adventure Options than any other operator in the Polar Regions. Visits to picturesque communities and Viking sites will provide guests with an intimate look into Greenland's distinct culture and history, while the rugged landscape, highlighted by dramatic fjords, imposing glaciers, towering mountains, verdant valleys and incredible wildflowers will leave you breathless. On Wild Fjords of South Greenland: Land of the Vikings, spectacular, unspoiled wonders await at every turn.



ITINERARY

Day 1 Arrive in Reykjavik, Iceland

Up to 30% OFF! Prices online do not show the discounted rates. Terms and Conditions apply, special offer is subject to availability, please contact us for more details.

Day 2 Embark

This afternoon, you'll board your vessel and begin your expedition. Get ready for a great adventure ahead!

Days 3 and 4 Transit from Iceland to Southeast Greenland

As we sail across the Denmark Strait, your Expedition Team will teach you about the wildlife and enthralling history of Greenland, its fascinating geology, ecology and climate, and the incredible sights you will soon explore. Staff will also keep watch for the seabirds you'll likely see soaring around your ship, as well as the whales that can be encountered here.

Days 5 and 6 Exploring Southeast Greenland

Your exploration of Greenland begins with South East Greenland, one of the least visited and most remote parts of the island. Your days sailing along the coast will be guided by weather and ice conditions, with each day and each excursion presenting new adventures. The region is a sight to behold, boasting a mesmerizing maze of vast glaciers, steep mountains and breathtaking fjords. If you're feeling even more adventurous, perhaps you'll treat yourself to an optional paddling excursion (extra cost), an unforgettable opportunity to glide past icebergs and glaciers and capture some photographs from a unique perspective. Another possible destination is Lindenow Fjord (Kangerlussuatsiaq), and if conditions are favorable, it's a great spot for hiking through lush and varied flora, surrounded by epic mountain vistas. This rarely visited deep fjord is fed by a number of glaciers and offers ample opportunities for your camera to get



a workout.

Days 7 and 8 Exploring Southeast Greenland

Sailing on, we'll explore Greenland's fertile southern coast. Nicknamed Arctic Patagonia, this region is as rich in spectacular scenery as it is in history and culture. Here, it's easy to see why Erik the Red gave Greenland its name: everywhere you look rewards with vistas of icy waters set against a backdrop of soaring mountains and unbelievably lush, green valleys. Scattered around the shores of the fjord systems that dominate the area are several small settlements, both ancient and present day, making South Greenland an ideal place to explore. The magical Prins Christian Sund (Ikerasassuaq), a complex maze of narrow fjords and channels, is a great place for cruising. You'll explore this stunning sound, home to calving glaciers, jagged mountains and sheer cliffs that plunge dramatically into the water. Sailing through this fjord from the vantage point of your ship or a Zodiac is an exhilarating experience. If conditions allow, venturing ashore provides opportunities for all levels of hiking. Steeped in Norse history, the southern coast of Greenland provides plenty of places to learn about this ancient culture. One such landing we hope to make is at Hvalsey (Qaqortukulooq), the site of Greenland's largest and best-preserved Norse ruins. Exploring the remains of the circa 14th-century church will feel like stepping back in time, as the building appears much as it did when it was abandoned in the 15th century and the surrounding fells and fjord remain similarly untouched. The little village of Igaliku, home to about 25 inhabitants, is Greenland's oldest sheep-farming settlement. It's a charming place to go ashore, as sheep peacefully graze on the

grass, surrounded by bloom-covered rolling valleys and tall mountains. The area is also known for its storied past, as evidenced by the remarkable red sandstone ruins of the Gardar cathedral (the largest church in Greenland in the Middle Ages) and bishop's residence, which date back to the early 12th century, when Greenland's first bishop was appointed. Wandering the foundations, excavated in 1926, you'll get to see a bit of history firsthand as you learn about this interesting relic of the Viking period. Together with four other historic farming communities, Igaliku is part of the newly established UNESCO World Heritage Site Kujataa.

Days 9 to 11 Exploring West Greenland

Boasting spectacular glaciers, mountainous landscapes, and vibrant communities, the west coast of Greenland will leave you awestruck. Heading north, each day we hope to take Zodiac excursions from the ship to explore local bays, channels and landing sites, discovering some of the quaint communities dotting the islands and fjords in the region and cruising in some of Greenland's most picturesque places. The west coast is home to Nuuk, the charming Greenlandic capital. You'll have time to wander the streets of the historic Old Nuuk neighborhood and see the Hans Egede Church and Hans Egede statue near the waterfront, both named after the missionary who founded the settlement. History buffs will want to visit the national museum to view the famous Greenlandic mummies, found under a rock outcrop in 1972 by two brothers who were ptarmigan hunting.

Day 12 Disembark in Nuuk and fly to Toronto for post voyage hotel night



Enjoy one more Zodiac ride to shore, where you'll board your charter flight to Toronto, Canada. Upon arrival in Toronto, we will transfer you to your included hotel.

Day 13 Depart Toronto

Today, you can make your way home at your leisure or spend some time exploring this artistic city.

Please Note:

Itineraries are subject to change.



YOUR SHIP: ULTRAMARINE

YOUR SHIP: Ultramarine

VESSEL TYPE:

LENGTH:

PASSENGER CAPACITY:

BUILT/REFURBISHED:

Ultramarine is designed to go beyond the familiar in polar exploration, to discover new places, and to immerse you in the best the region has to offer. Equipped with two twin-engine helicopters, Ultramarine offers the most robust portfolio of adventure activities in the industry, the most spacious suites in its category, breathtaking public spaces, and more outdoor wildlife viewing spaces than other expedition ships its size. It also features an innovative mix of sustainability features that exceed all industry standards. With all this and more, Ultramarine is set to deliver the ultimate polar expedition experience. Cabin - Spacious Entryways, Personal Safes, Spa-inspired Bathrooms, Heated Bathroom Floors, Premium beds and bed linens, Convertible Beds, Individual Temperature Controls, HD Flatscreen Televisions, Oversized Windows With Sweeping Views, Electrical Supply: 220V Aboard - 2 Dining Areas, 4 Bars, Panorama Lounge, Lecture Theater, Library, Polar Boutique, Spa & Fitness Center, Oceanview Sauna, Zodiac Hangar with 4 Embarkation Points, 2 Ready Rooms with Individual Lockers, Walkaround Deck, Bridge Activities - Flightseeing (Included), Zodiac Cruising (Included), Hiking (Included), Lectures (Included), Camping (Optional), Sea

Kayaking (Optional), Stand-Up Paddleboarding (Optional), Paddle Excursions (Optional), Cross Country Skiing (Optional), Mountaineering

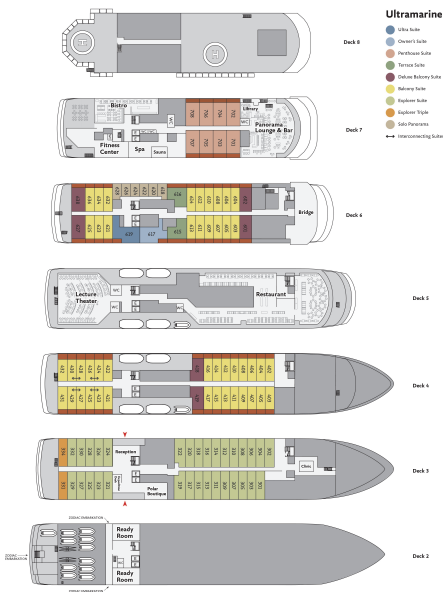


(Optional)

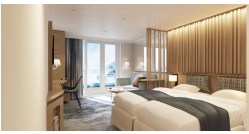


small-cruise-ships.com info@small-cruise-ships.com

INSIDE YOUR SHIP



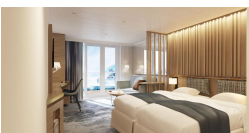
Balcony Suite. From



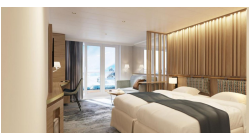
Deluxe Balcony Suite. From



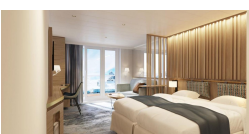
Explorer Suite. From



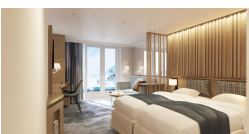
Explorer Triple. From



Owner's Suite. From



Penthouse Suite. From



Solo Panorama. From

Terrace Suite. From



The Small Cruise
Ship Collection

www.small-cruise-ships.com

small-cruise-ships.com

info@small-cruise-ships.com

PRICING

19-Jul-2025 to 31-Jul-2025

Explorer Triple. From	£8100 GBP pp
Solo Panorama. From	£15100 GBP pp
Explorer Suite. From	£18360 GBP pp
Balcony Suite. From	£20230 GBP pp
Deluxe Balcony Suite. From	£28000 GBP pp
Terrace Suite. From	£29000 GBP pp
Penthouse Suite. From	£30200 GBP pp
Owner's Suite. From	£38600 GBP pp
Ultra Suite. From	£43000 GBP pp



The Small Cruise
Ship Collection

www.small-cruise-ships.com

01432 507 280 (within UK)

info@small-cruise-ships.com | small-cruise-ships.com