

# The Small Cruise Ship Collection

www.small-cruise-ships.com

small-cruise-ships.com

info@small-cruise-ships.com

## WILDERNESS FROM GREENLAND TO THE EAST COAST OF CANADA - 15 DAY LUXURY CRUISE

See the infinity of the polar expanses unfurl its grandeur during an expedition cruise taking you from Greenland to the Canadian Far North to reach the coastlines of Labrador and the sumptuous island of Newfoundland. Encounters with local people, the exciting history of the Arctic territories and many unforgettable hikes will mark this 15-day journey aboard Le Lyrial. Sisimiut, with its colourful houses facing the ocean, is the first port of call on your expedition before crossing the Labrador Sea to reach the Canadian shores of Nunavut. When the weather is fine, the mountains are reflected in the crystal-clear waters of the gigantic fjord which will lead you up to the Grinnell Glacier. In Zodiac dinghies or on foot, you will criss-cross the territory that the Inuit share with polar bears, musk oxen, seals and whales. The ramparts formed by the limestone cliffs around Akpatok Island have made it inaccessible to humans, but perfect for the thick-billed mures that nest in its fissures. A succession of landscapes will leave you with sentiment of tranquillity, inherent to the contemplation of these spaces, which exceed any known proportions. You will soon discover the province of Newfoundland and Labrador and its highest mountains, those encircling the splendid Nachvak Fjord. A little further on, the town of Rigolet - only accessible by the sea - will offer you, along its bay and its lake, a unique observation point to spot Minke whales and the region's birds. The last part of your cruise will open the doors to the island of Newfoundland and, while it seems very remote, it has a great many historic sites. These attest to the presence of the Vikings as far back as 1000 and will plunge you into the past of the first Europeans who arrived on the North American continent for the whaling

trade Your journey will end on the island of Saint Pierre, a fragment of France on the other side of the world, which is home to fascinating wild



biodiversity.

### ITINERARY

Day 1 KANGERLUSSUAQ

From 1941 to 1992, the town of Kangerlussuaq in Greenland was home to an American military base. Nowadays, thanks to its international airport, it has become a transit point for travellers seeking adventure in the Far North. Located to the north of the

The Small Cruise Ship Collection  
www.small-cruise-ships.com

01432 507 280 (within UK)

info@small-cruise-ships.com | small-cruise-ships.com



## The Small Cruise Ship Collection

[www.small-cruise-ships.com](http://www.small-cruise-ships.com)

[small-cruise-ships.com](http://small-cruise-ships.com)

[info@small-cruise-ships.com](mailto:info@small-cruise-ships.com)

Arctic Circle, this town is the starting point of magnificent discoveries surrounded by unspoiled nature. Indeed, just a few dozen kilometres from there it is possible to get close to the Greenland ice sheet, the largest body of ice in the Northern Hemisphere. From Kangerlussuaq, admire also the superb landscapes of tundra in autumnal colours, where Arctic hares, musk oxen, Arctic foxes, reindeer, falcons and eagles live.

### Day 2 SISIMIUT

During your cruise, we invite you to discover Sisimiut, founded in 1756 and the second largest town in Greenland. This small town is typical of Greenland, boasting bewitching panoramas: here and there, colourful stilt houses dot the undulating landscape, and the small fishing port stands as the gateway to an icy realm. As for the town centre, it is home to a number of historic buildings, a small church and a museum which retraces the history of the Inuit people, as well as many craft shops. When your ship drops anchor here, you will set out to meet the locals in a typically arctic atmosphere.

### Day 3 QIKIQTARJUAQ, NUNAVUT

The small hamlet of Qikiqtarjuaq is on the east coast of Baffin Island, in the heart of Nunavut territory. Bounded by the Davis Strait, the island of Qikiqtarjuaq, formerly known as Broughton Island, is marked by the history of whale hunting. During the 19th century, European whalers travelled around the region and began trading with the Inuits. Later on, the installation of a military post and a landing strip facilitated access to this part of the world. Located very close to the Auyuittuq National Park,

Qikiqtarjuaq has very beautiful landscapes of mountains, hills and ice, and is home to many emblematic Arctic animals: whales, seals, walrus, narwhals and polar bears.

### Day 4 AT SEA

During your day at sea, make the most of the many services and activities on board. Treat yourself to a moment of relaxation in the spa or stay in shape in the fitness centre. Depending on the season, let yourself be tempted by the swimming pool or a spot of sunbathing. This day without a port of call will also be an opportunity to enjoy the conferences or shows proposed on board, to do some shopping in the boutique or to meet the PONANT photographers in their dedicated space. As for lovers of the open sea, they will be able to visit the ship's upper deck to admire the spectacle of the waves and perhaps be lucky enough to observe marine species. A truly enchanted interlude, combining comfort, rest and entertainment.

### Day 5 GRINNELL GLACIER, NUNAVUT

To the south of Baffin Island, at the entrance to the fjord leading to Iqaluit, the capital of Nunavut, lies the Grinnell Glacier. Iqaluit's name is derived from the Inuktitut language; it means "place of many fish", as the waters of the fjord are teeming with Arctic char. The glacier, which is approximately 800 metres (2,625 feet) high, is named after Henry Grinnell, an American philanthropist who funded several polar expeditions in the 19th century. Weather permitting, you will have the privilege of admiring the glacier front from the sea during an outing in an inflatable dinghy, before landing to walk up the valley running

The Small Cruise Ship Collection  
[www.small-cruise-ships.com](http://www.small-cruise-ships.com)

01432 507 280 (within UK)

[info@small-cruise-ships.com](mailto:info@small-cruise-ships.com) | [small-cruise-ships.com](http://small-cruise-ships.com)



## The Small Cruise Ship Collection

[www.small-cruise-ships.com](http://www.small-cruise-ships.com)

[small-cruise-ships.com](http://small-cruise-ships.com)

[info@small-cruise-ships.com](mailto:info@small-cruise-ships.com)

along the glacier, in a rocky landscape with tundra vegetation.

### Day 8 NAIN

### Day 6 AKPATOK ISLAND, NUNAVUT

In the north-west of Ungava Bay, in Nunavut, the northernmost Canadian province, Akpatok Island reveals its chiselled coastline. Uninhabited by men, it is occupied by the thick-billed murre for which it was named (Akpat is their name in Inuit). Its cliffs, rising up to 200 metres (656 feet) high, make an ideal nesting environment for these birds. Dominated by a vast limestone plateau, the island is also surrounded by numerous beaches where walrus sun themselves in the summertime. From your inflatable dinghy, if the weather conditions allow it, you might also have the chance to glimpse some polar bears roaming along the cliffs in search of food.

### Day 7 NACHVAK FJORD, TORNGAT MOUNTAINS NATIONAL PARK

Nachvak Fjord is one of the longest fjords on the north coast of Labrador, stretching out over 20 km (12.4 miles). Steep-sided, it is 2 km (1.2 miles) wide and lined with sheer rock faces. On its western end, its two arms, Tallek and Tasiuyak, form the outlet of glacial valleys with a characteristic U shape. The Torngat Mountains, the highest points of the surrounding relief, are Labrador's tallest. Nachvak Fjord has always been an important fishing spot for the Inuit of Labrador, and was once the northernmost trading post of the Hudson's Bay Company. You will be able to admire spectacular views from the ship's exterior decks, before taking your place aboard an inflatable dinghy to get as close as possible to the coast.

Nain is the northernmost permanent settlement in Newfoundland and Labrador, accessible only by air or by sea. The town was established by Moravian missionaries in 1771 and has been inhabited ever since. It now has a population of around 850, composed mainly of Inuits. Fishing is the main income-generating activity, with hunting and traditional trapping activities resuming in the winter months. Accompanied by your naturalist guides and local guides, you will have the chance to discover daily life in Nain, then set off on a hike in the surrounding hills. There, you will discover a beautiful view of the small wooded valley in which the village lies.

### Day 9 RIGOLET

Discover the picturesque community of Rigolet, on the north coast of Labrador. The wooden promenade, looking out onto the spruce forest and the waters of Hamilton Inlet, is one of the longest in the world. The village, located very near to Lake Melville, houses a community of 300 inhabitants who are, in the main part, descendants of the Labrador Inuit and the European traders who came to settle in these parts from the 18th century onwards. During your port of call, you'll admire the beautiful pieces of local craftsmanship: weaved baskets, mats, sealskin clothing, sculptures... As for wildlife fans, they will not be disappointed, with the possibility of observing whales, as well as seals, orcas, bears, foxes, otters and migratory birds.

### Day 10 BATTLE HARBOUR

The Small Cruise Ship Collection

[www.small-cruise-ships.com](http://www.small-cruise-ships.com)

01432 507 280 (within UK)

[info@small-cruise-ships.com](mailto:info@small-cruise-ships.com) | [small-cruise-ships.com](http://small-cruise-ships.com)



## The Small Cruise Ship Collection

[www.small-cruise-ships.com](http://www.small-cruise-ships.com)

[small-cruise-ships.com](http://small-cruise-ships.com)

[info@small-cruise-ships.com](mailto:info@small-cruise-ships.com)

Lying some 15 kilometres (9 miles) off the wind-battered coast of Labrador, the small and isolated Battle Harbour cultivates the traditions of a community of Newfoundland fishermen. Once home to a saltfish mercantile complex established around 1770, the island offers visitors a carefully maintained heritage in a stunning setting of rocky coves and emerald moors... The small, colourful wooden houses, the shops and fish warehouses, all vestiges reflecting the rich local history, have earned the island its designation as a National Historic Site of Canada. Your team of naturalists will guide you along the island's paths, for an immersion into the past of the tough fishermen who settled here.

Days 11 - 14 NEWFOUNDLAND

Standing guard at the mouth of the St. Lawrence River, the Canadian island of Newfoundland, battered by the waters and storms of the North Atlantic, stirs the imagination. Officially discovered by the navigator Jean Cabot in 1497, Newfoundland bears the traces of a Viking occupation around the year 1000. The island also carries the memory of the Terre-Neuvas, tough cod and whale fishermen from Brittany or the Basque Country. From the 16th century, these seamen would set off for long months on perilous but lucrative fishing trips along the Grand Banks, shoal waters teeming with fish, but where fog and hurricanes reign. These days, the summer is an ideal time of year for whale watching, observing icebergs drifting by from Greenland, and hiking.

Day 15 SAINT PIERRE ISLAND, SAINT PIERRE AND MIQUELON

Off the Canadian coast, discover Saint Pierre Island, one of the two main islands of the Saint Pierre and Miquelon archipelago, the only French territory in North America. Endowed with a natural harbour, the island, whose name is a reference to the patron saint of fishermen, developed around the fishing industry and still has many traces of its past today. Whale hunting, cod fishing, alcohol smuggling during the Prohibition: all of these memories are still very much alive in the capital, Saint-Pierre. The island is also renowned for the observation of exceptional fauna including, among others, whales, fin whales, dolphins, seals, puffins and petrels.

Please Note:

Itinerary is subject to change according to port authorizations and government regulations. We are privileged guests in these remote lands where we are at the mercy of weather, ice, tidal and current conditions. Landings on certain sites and the observation of certain wildlife cannot be guaranteed. They vary from day to day, making each PONANT cruise a unique experience. The Captain and the Expedition Leader will make every effort to ensure that your experience is as rich as possible, while complying with the safety rules and instructions imposed by the AECO.

The Small Cruise Ship Collection

[www.small-cruise-ships.com](http://www.small-cruise-ships.com)

01432 507 280 (within UK)

[info@small-cruise-ships.com](mailto:info@small-cruise-ships.com) | [small-cruise-ships.com](http://small-cruise-ships.com)



## The Small Cruise Ship Collection

[www.small-cruise-ships.com](http://www.small-cruise-ships.com)

[small-cruise-ships.com](http://small-cruise-ships.com)

[info@small-cruise-ships.com](mailto:info@small-cruise-ships.com)

## YOUR SHIP: L'AUSTRAL

<b>YOUR SHIP:</b>	<b>L'Austral</b>
<b>VESSEL TYPE:</b>	<b>142 metres. Passenger Capacity: 264 (200 in Antarctica). Built: 2011</b>
<b>LENGTH:</b>	<b>2011</b>
<b>PASSENGER CAPACITY:</b>	
<b>BUILT/REFURBISHED:</b>	

Luxury Expedition / Cruise Ship This superb mega-yacht with 132 cabins is the result of the expertise of the Italian Fincantieri shipyard and French sophistication, as interpreted by designer Jean-Philippe Nuel. L'Austral has a unique atmosphere, a subtle blend of luxury, intimacy and well-being. A sleek silhouette softened by elegantly smooth contours and large, arched windows opening up to the sea and the light: so many features come together to give L'Austral her distinctive shape. Precious materials, discreet elegance and a perfect balance between chic and casual, combine to make you feel as if you are on your own private yacht. A design blending tradition and innovation, where a nautical mood has been subtly recreated. Precious materials in soothing neutral tones are brought to life with splashes of cheerful reds. So many personal touches create the spirit of a "private yacht". Suites and staterooms You can expect magnificent ocean views as 124 staterooms and suites have balconies. Individually-controlled airconditioning · Cabin layout: kingsize bed, or twin beds, communicating cabins available (children welcome) · Minibar · Flat screen satellite TV · iPod™

players · Desk with stationery · Electronic safe · French bath products · Dressing table and hairdryer · Bath robes · Satellite direct line telephone · 110/220 volts · 24hr room service · WiFi · Balcony Cuisine Loyal to the great French tradition, the haute cuisine on board is worthy of the finest restaurants, where discreet, attentive service is the hallmark. Choose from two restaurants for breakfasts, lunch and dinner. The Gastronomic Restaurant is situated on Le Liberte Deck and serves you French and international cuisine accompanied by fine wine. On the Grill Restaurant, you have the opportunity to eat outside and enjoy buffet lunch and themed dinner. Life On Board Whether you want to join other guests in the theatre or games area (Wii™ consoles, etc), or relax on your own in a quiet corner of the library, L'Austral has been designed to meet the needs of every guest. Everything has been done to preserve the independence of each guest to suit their personal tastes: lounges for lectures and shows, a spa in partnership with Sothys™, but also more intimate spaces such as the library and internet corner. Comfortable cabins, nearly all with private balcony, are available for families either as triples or as communicating cabins. There is also a games area with Wii™ consoles, children's menus, and a baby-sitting service. Just as if you were on a private yacht, your time is your own to do as you please. Fitted with the latest equipment (Kinesis Wall, running machine) and in partnership with the famous Sothys™ brand, the Beauty Centre on L'Austral welcomes you for some unforgettable moments of relaxation and pampering (beauty treatments, hairdresser). Wheelchairs 3 specially adapted wheelchair cabins (Deck 3 = Superior cabin no. 307, no balcony, Deck 4 = Prestige Cabin no. 407 - with

The Small Cruise Ship Collection  
[www.small-cruise-ships.com](http://www.small-cruise-ships.com)

01432 507 280 (within UK)

[info@small-cruise-ships.com](mailto:info@small-cruise-ships.com) | [small-cruise-ships.com](http://small-cruise-ships.com)



# The Small Cruise Ship Collection

[www.small-cruise-ships.com](http://www.small-cruise-ships.com)



[small-cruise-ships.com](http://small-cruise-ships.com)

[info@small-cruise-ships.com](mailto:info@small-cruise-ships.com)

balcony and Deck 5 = Prestige Cabin no 509, with balcony) and lifts to all decks/areas. Details Please click the following links to read more about Ponant and the other Ponant



cruise ships.



The Small Cruise Ship Collection

[www.small-cruise-ships.com](http://www.small-cruise-ships.com)

**01432 507 280** (within UK)

[info@small-cruise-ships.com](mailto:info@small-cruise-ships.com) | [small-cruise-ships.com](http://small-cruise-ships.com)

# The Small Cruise Ship Collection

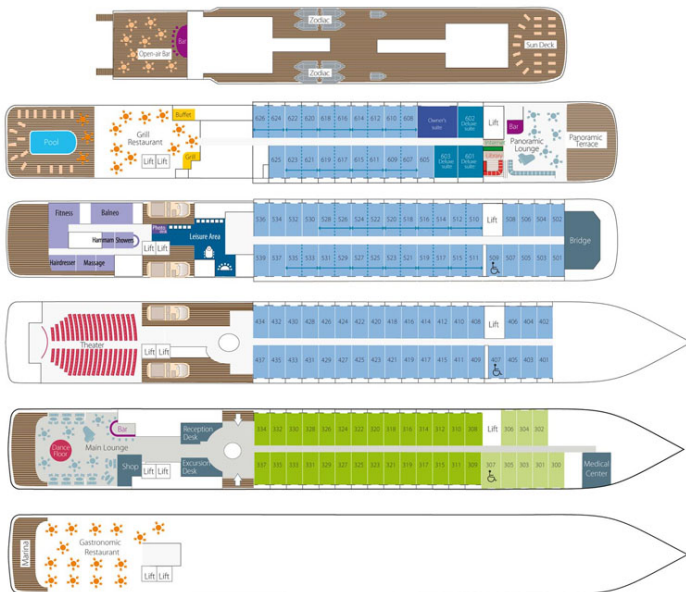
www.small-cruise-ships.com



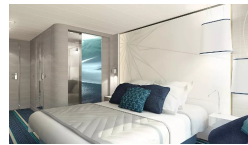
small-cruise-ships.com

info@small-cruise-ships.com

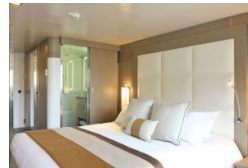
## INSIDE YOUR SHIP



DeLuxe Stateroom



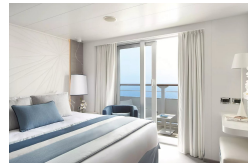
Deluxe Stateroom



Deluxe Suite



Grand Deluxe Suite



Grand Privilege Suite

Owner's suite

Prestige Deck 4

Prestige Deck 5

Prestige Deck 5 Suite

Prestige Deck 6

Prestige Deck 6 Suite

Prestige Stateroom - Deck 4

Prestige Stateroom - Deck 5

Prestige Stateroom - Deck 6

Prestige Suite - Deck 5

Prestige Suite - Deck 6

Privilege Suite

Superior Stateroom



# The Small Cruise Ship Collection

www.small-cruise-ships.com



small-cruise-ships.com

info@small-cruise-ships.com

## PRICING

### 03-Sep-2025 to 17-Sep-2025

Prestige Suite - Deck 5	£22569 GBP pp
Prestige Stateroom - Deck 5	£12269 GBP pp
Prestige Stateroom - Deck 4	£11769 GBP pp
Deluxe Suite	£17175 GBP pp
DeLuxe Stateroom	£10789 GBP pp
Grand Deluxe Suite	£26895 GBP pp
Superior Stateroom	£10105 GBP pp
Prestige Stateroom - Deck 6	£12855 GBP pp
Grand Privilege Suite	£31505 GBP pp
Privilege Suite	£23655 GBP pp
Owner's suite	£43967 GBP pp

Prestige Suite - Deck 5	£22599 GBP pp
Prestige Stateroom - Deck 4	£11585 GBP pp
Prestige Stateroom - Deck 5	£12085 GBP pp
Prestige Stateroom - Deck 6	£12685 GBP pp
Deluxe Suite	£17095 GBP pp
Grand Privilege Suite	£31715 GBP pp
Superior Stateroom	£9879 GBP pp
Owner's suite	£44425 GBP pp
DeLuxe Stateroom	£10579 GBP pp
Privilege Suite	£23705 GBP pp
Grand Deluxe Suite	£27005 GBP pp

### 13-Sep-2025 to 27-Sep-2025

Prestige Suite - Deck 5	£22565 GBP pp
Superior Stateroom	£10099 GBP pp
Prestige Stateroom - Deck 5	£12255 GBP pp
DeLuxe Stateroom	£10789 GBP pp
Prestige Stateroom - Deck 6	£12849 GBP pp
Prestige Stateroom - Deck 4	£11769 GBP pp
Deluxe Suite	£17169 GBP pp
Prestige Suite - Deck 6	£23649 GBP pp
Owner's suite	£34522 GBP pp

### 09-Sep-2026 to 23-Sep-2026



01432 507 280 (within UK)

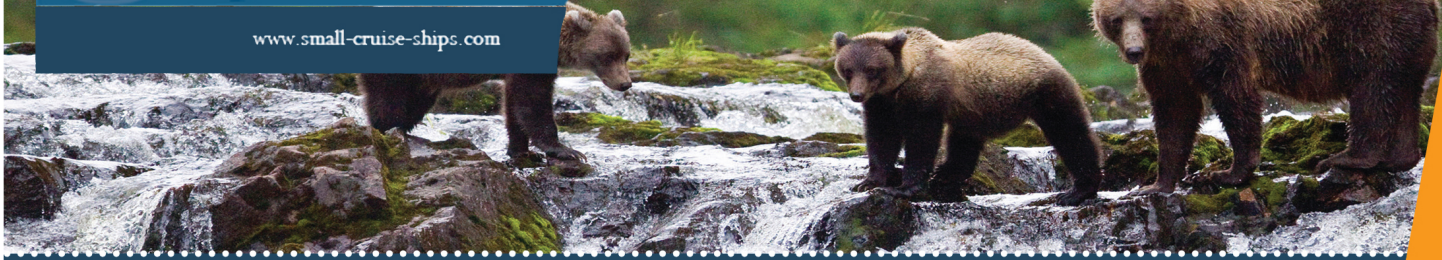
info@small-cruise-ships.com | small-cruise-ships.com





# The Small Cruise Ship Collection

[www.small-cruise-ships.com](http://www.small-cruise-ships.com)



[small-cruise-ships.com](http://small-cruise-ships.com)

[info@small-cruise-ships.com](mailto:info@small-cruise-ships.com)

## PRICING

19-Sep-2026 to 06-Oct-2026

Deluxe Stateroom	£11185 GBP pp
Deluxe Suite	£18559 GBP pp
Prestige Deck 6 Suite	£26059 GBP pp
Superior Stateroom	£10389 GBP pp
Prestige Deck 6	£13569 GBP pp
Prestige Deck 5 Suite	£24805 GBP pp
Prestige Deck 5	£12889 GBP pp
Prestige Deck 4	£12325 GBP pp

**ADDITIONAL CHARGES:**

**Port Taxes & Fees 1040 AUD pp**



The Small Cruise Ship Collection

[www.small-cruise-ships.com](http://www.small-cruise-ships.com)

**01432 507 280** (within UK)

[info@small-cruise-ships.com](mailto:info@small-cruise-ships.com) | [small-cruise-ships.com](http://small-cruise-ships.com)