

The Small Cruise Ship Collection

www.small-cruise-ships.com

small-cruise-ships.com

info@small-cruise-ships.com

YACHTING THROUGH A EUROPEAN TRINITY - CRUISE FROM GENOA TO BARCELONA

This itinerary offers a culturally rich journey through Italy, France, and Spain, highlighting the elegance of the Mediterranean. Enjoy a morning near Nice at the Villa de Rothschild with its stunning gardens and exquisite collections. In La Ciotat, spend a creative day in the heart of Aix-en-Provence. Experience the thrill of a boat tour through the steep fjords of the Calanques, and be captivated by the breathtaking landscapes of Collioure, which inspired the Fauvist painters.



ITINERARY

Day 1 Genoa, Italy

Departure 7:00 pm

Strange, really, that Columbus left his hometown of Genoa to explore the world. After all, the proud seafaring metropolis with its charming maze of alleys, hidden backyards, and magnificent palazzi is an excellent place in itself to go exploring. You can

The Small Cruise Ship Collection

www.small-cruise-ships.com

01432 507 280 (within UK)

info@small-cruise-ships.com | small-cruise-ships.com



The Small Cruise Ship Collection

www.small-cruise-ships.com

small-cruise-ships.com

info@small-cruise-ships.com

stroll along the arcade-lined Via XX Settembre past exclusive boutiques, sample the delicacies of the Mercato Orientale, admire the Cathedral of San Lorenzo, take a selfie in front of the fountain in the Piazza de Ferrari, and finally end up back at the old harbor, which has been beautifully redesigned by star architect Renzo Piano.

Day 2 Nice, France

Arrival 8:00 am, Departure 1:30 pm

Nice lies in one of the world's most lavishly endowed natural landscapes. The sea glows azure and the mountains in the background rise picturesquely up into the sky. Castle Hill gives you a fantastic view over the rambling old town - a labyrinth of alleyways with Baroque churches, pastel-colored houses and red-tiled roofs. The Promenade des Anglais, a sophisticated, five-kilometer-(3 miles)long walkway along the magnificent Baie des Anges and its long beach, lies at the heart of the elegant new town, with its splendid palaces and aristocratic hotels in the Belle-Époque and Art Deco styles.

Day 3 La Ciotat, France

Arrival 8:00 am, Departure 11:00 pm

With exciting cities like Marseille, Cassis, Toulon, and Aix-en-Provence in the vicinity, it really isn't easy for La Ciotat to stand out. On the other hand, being overlooked also offers great opportunities: La Ciotat has managed to retain the authentic, unexcited charm of a small town and is a real insider tip on the

Cote d'Azur. The coastal town is a great place to live in: Old mansions, chapels and churches line the town's airy squares; and the newly designed harbor promenade invites visitors to stroll and shop with a view of fishing boats, sailing yachts and the old shipyard cranes.

Day 4 Day under full sails

Climbing the rigging, untying ropes, setting sails - today is all about sailing. Time to lean back and relax in the deck chair and watch the passionate crew hoisting the sails by hand.

Day 5 Collioure, France

Arrival 8:00 am, Departure 1:30 pm

On one side of the harbor a defiant church, on the other the old royal castle, in between a promenade on which gnarled plane trees provide shade - can so much picturesque idyll be real? In Collioure it can. The fishing village has been attracting artists since the beginning of the 20th century: Here, fauvists like Henri Matisse and Andre Derain revived in the golden light. Today, a theme trail along the harbor leads to the places where their works were created. Artists have again settled in the old town quarter and offer their works for sale in the flower-decorated labyrinth of alleys and stairways.

Day 6 Barcelona, Spain

The Small Cruise Ship Collection

www.small-cruise-ships.com

01432 507 280 (within UK)

info@small-cruise-ships.com | small-cruise-ships.com



The Small Cruise Ship Collection

www.small-cruise-ships.com

small-cruise-ships.com

info@small-cruise-ships.com

Arrival 8:00 am

Barcelona revels in contrasts. Many enthuse over the beautiful elegant squares and boulevards, while others look for medieval romance in the Gothic quarter. Some love the artistic treasures in the Picasso Museum or the Joan Miro Foundation, but for most people Barcelona is the capital of Catalan Art Nouveau and its glory is epitomised in the spectacular Palau de la Musica. At every turn you encounter the playfully opulent creations of architect Antonio Gaudi. His exuberant fantasies are evident in the numerous houses, idiosyncratic parks and the famous uncompleted Sagrada Familia cathedral which he created.

Please note:

Itineraries are subject to change.

The Small Cruise Ship Collection

www.small-cruise-ships.com

small-cruise-ships.com

info@small-cruise-ships.com

YOUR SHIP: SEA CLOUD II

YOUR SHIP:	Sea Cloud II
VESSEL TYPE:	Tall Ship (Sailing)
LENGTH:	105 metres
PASSENGER CAPACITY:	96
BUILT/REFURBISHED:	2001

Launched in 2001, Sea Cloud II is a stunning vessel, built along traditional lines, but offering deluxe accommodation. She combines timeless elegance of sailing ships of the past with the highest safety standards and the luxurious comfort of modern cruise ships. Just like her legendary sister ship Sea Cloud, the 29,600 square feet of sails is set by hand which is a truly magical sight. Built to accommodate 96 passengers in five star luxury, she offers a range of beautifully appointed suites and cabins which are furnished with great style. All accommodations have outside views and the bathrooms, in light marble, are unusually spacious and extremely comfortable. The finest, carefully chosen fabrics, combined with leather, rattan and other materials, brass and gold, precious woods and marble together create an impressive ensemble. No expense has been spared to create a sympathetic ambience in both the accommodations and public areas and this is reflected throughout the vessel. Public areas include an elegant lounge, library, fitness centre, boutique, lido bar and hospital. The single sitting dining room is airy and modern and the quality of the cuisine and service will be to the highest of standards, as one would expect on a Sea Cloud cruise. Relax on the Lido deck and experience the natural

grandeur of travelling under sail, rekindling memories of a



bygone age.

The Small Cruise Ship Collection
www.small-cruise-ships.com

01432 507 280 (within UK)

info@small-cruise-ships.com | small-cruise-ships.com

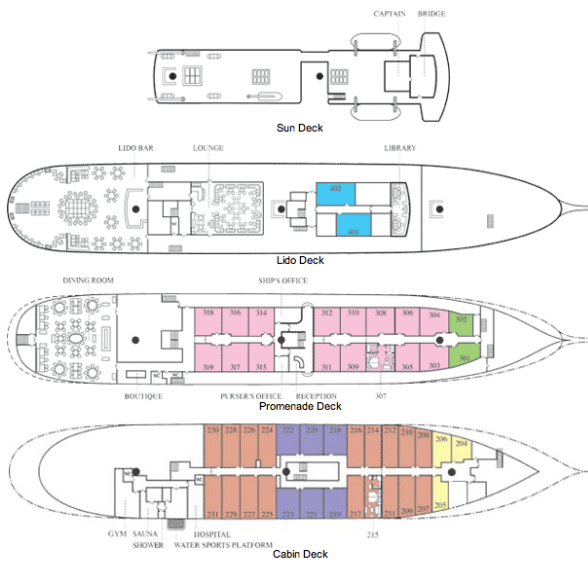
The Small Cruise Ship Collection

www.small-cruise-ships.com

small-cruise-ships.com

info@small-cruise-ships.com

INSIDE YOUR SHIP



Please note that category F cabins have one lower and one upper berth bed

- | | | |
|---|---|---|
| ■ Cat A | ■ Cat B | ■ Cat C |
| ■ Cat D | ■ Cat E | ■ Cat F |

Key

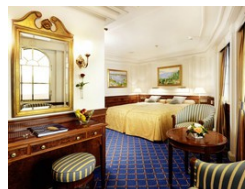
Category A. From



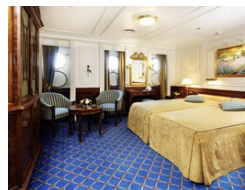
Category B. From



Category C. From



Category D. From



Category E. From

Category F Upper/Lower Beds. From



The Small Cruise Ship Collection

www.small-cruise-ships.com

small-cruise-ships.com

info@small-cruise-ships.com

PRICING

20-Oct-2025 to 25-Oct-2025

GTY Double Cabin. From	£2585 GBP pp
Category F Upper/Lower Beds. From	£2810 GBP pp
Category E. From	£3249 GBP pp
Category D. From	£3615 GBP pp
Category C. From	£3806 GBP pp
Category B. From	£4478 GBP pp
Category A. From	£4976 GBP pp

 The Small Cruise Ship Collection
www.small-cruise-ships.com

01432 507 280 (within UK)

info@small-cruise-ships.com | small-cruise-ships.com