

The Small Cruise Ship Collection

www.small-cruise-ships.com

small-cruise-ships.com

info@small-cruise-ships.com

ZANZIBAR, ALDABRA & THE TREASURES OF THE INDIAN OCEAN IN LUXURY

Embark with PONANT aboard *Le Bougainville* for a 13-day expedition cruise in the Indian Ocean. A chance to discover stunning natural environments, exceptional wildlife, and UNESCO World Heritage sites loaded with history. From Victoria on the island of Mahe, you will first sail to La Digue, where a veritable picture-postcard of the Seychelles awaits you: palm trees, granite rocks, white sand and crystal-clear waters. Further on, the small islands Astove will be an opportunity to snorkel and dive among bright-coloured sea life, before reaching Aldabra Atoll, a largely untouched natural sanctuary listed as World Heritage by UNESCO. Edged with mangrove and fine sandy beaches, it is home to the largest colony of land turtles in the world. After a stop on the sublime Assumption Island, your next ports of call will be an opportunity to discover several of the wonders of Tanzania. You will explore the ruins of the 13th-century Swahili trading past of Kilwa Kisiwani, the small coral island of Misali as well as Pemba Island and its clove plantations and fantastic scuba diving. This fabulous trip will draw to an end in Zanzibar, a city with superb UNESCO-listed buildings, blending African, Arab, Indian and European influences over more than a millennium. The encounters with the wildlife described above illustrate possible experiences only and cannot be guaranteed.



ITINERARY

Day 1 VICTORIA, MAHÉ

Discover Mahe, the main island of the Seychelles and also the largest of the archipelago, home to the capital, Victoria. Mahe has almost 70 beaches of fine sand, framed by the emblematic granite rocks, and whose crystal clear waters are renowned for their rich underwater life. The island is also famous for its splendid mountain panoramas accessible on hikes, such as the Morne Seychellois, which is 905 metres high and overlooks the Indian Ocean. Mahe is also an island full of history where fine colonial properties rub shoulders with Creole houses - and don't forget the marvellous Botanical Gardens in Victoria.

The Small Cruise Ship Collection

www.small-cruise-ships.com

01432 507 280 (within UK)

info@small-cruise-ships.com | small-cruise-ships.com



The Small Cruise Ship Collection

www.small-cruise-ships.com

small-cruise-ships.com

info@small-cruise-ships.com

Day 2 LA DIGUE ISLAND

La Digue Island is a veritable concentration of all the beauty of the Seychelles. Located 6 km south-east of Praslin, this small piece of land that looks like paradise is the third-largest island in the Seychelles, despite its modest size (5 km by 3 km)! Turquoise waters just asking you to swim in them, lush vegetation sheltering giant tortoises, beaches of fine sand fringed with coconut trees and surrounded with those emblematic large granite rocks with their pink highlights like at the famous Anse Source d'Argent: the perfect picture postcard... Authentic and preserved, the island follows a peaceful rhythm, with the only means of transport along its little roads being bikes or traditional oxcarts.

Day 3 AT SEA

During your day at sea, make the most of the many services and activities on board. Treat yourself to a moment of relaxation in the spa or stay in shape in the fitness centre. Depending on the season, let yourself be tempted by the swimming pool or a spot of sunbathing. This day without a port of call will also be an opportunity to enjoy the conferences or shows proposed on board, to do some shopping in the boutique or to meet the PONANT photographers in their dedicated space. As for lovers of the open sea, they will be able to visit the ship's upper deck to admire the spectacle of the waves and perhaps be lucky enough to observe marine species. A truly enchanted interlude, combining comfort, rest and entertainment.

Day 4 ASTOVE ISLAND

Closer to Madagascar than to Victoria, Astove is the southernmost island in the Seychelles. It is part of the Aldabra group, in the Outer Islands of the Seychelles. Now uninhabited, this coral island covered in coconut trees was once home to the employees that worked on the coconut plantations. Renowned for the richness of its seabeds, Astove Atoll is now a top destination for fishing enthusiasts. It also attracts experienced divers, who visit the atoll to explore the "Astove Wall", where the sea floor drops to a depth of about 40 metres. The wall is covered in coral and many fish and green sea turtles can be found there.

Days 5 - 6 ALDABRA ATOLL

Located in the very heart of this faraway archipelago, the Aldabra Atoll is considered to be one of the last virtually untouched sanctuaries on earth, where a large population of sea turtles has found refuge. Listed as a UNESCO World Heritage Site, this vast tract of land is formed by 4 small coral reef islands separated by narrow passes and containing an emerald-water lagoon lined with mangrove and fine-sand beaches. As your ship slowly nears the clear, reflective waters along its shoreline, do not miss your chance to discover this natural wonder, which is considered to be the largest atoll in the world and once fired the imagination of many an explorer.

Day 7 ASSUMPTION ISLAND

Assumption Island is part of the Aldabra group (Outer Islands),

The Small Cruise Ship Collection
www.small-cruise-ships.com

01432 507 280 (within UK)

info@small-cruise-ships.com | small-cruise-ships.com



The Small Cruise Ship Collection

www.small-cruise-ships.com

small-cruise-ships.com

info@small-cruise-ships.com

situated in the south-west of the Seychelles. Discovered in the mid-18th century by the French captain Nicolas Morphey, this bean-shaped island covered in dunes and shrubs is relatively flat. A handful of people live there, in a small village in the island's west. The island's beaches are a major egg-laying and breeding site for sea turtles. The surrounding waters are ideal for scuba diving. This is where Jacques-Yves Cousteau filmed some of the scenes for his famous documentary film "The Silent World", released in 1956.

Day 8 AT SEA

During your day at sea, make the most of the many services and activities on board. Treat yourself to a moment of relaxation in the spa or stay in shape in the fitness centre. Depending on the season, let yourself be tempted by the swimming pool or a spot of sunbathing. This day without a port of call will also be an opportunity to enjoy the conferences or shows proposed on board, to do some shopping in the boutique or to meet the PONANT photographers in their dedicated space. As for lovers of the open sea, they will be able to visit the ship's upper deck to admire the spectacle of the waves and perhaps be lucky enough to observe marine species. A truly enchanted interlude, combining comfort, rest and entertainment.

Day 9 KILWA KISIWANI

Near the Tanzanian coast, around 300 km south of Dar es Salaam, the island of Kilwa Kisiwani is a UNESCO World Heritage Site. Occupied from the 9th century to the 11th century, it reached its heights in the 13th and 14th centuries. It

was described by the Moroccan explorer Ibn Battouta as "one of the most beautiful cities in the world." A former Swahili trading city, the island prospered from the trade of gold and ivory from the inland regions. The remains of its former port city cover a large part of the island. Those of its superb Great Mosque, the oldest mosque remaining on the coast of East Africa, are well worth a visit.

Day 10 MISALI ISLAND

Renowned for its underwater world, Misali became a protected conservation area in 1998. So, it's possible to admire its sea beds and swim there, but not to fish. If conditions allow, you'll perhaps have the chance to see varied underwater fauna. To the north-east of the island, a white sandy beach, bathed in stunningly transparent turquoise water, is an ideal place to relax.

Day 11 PEMBA ISLAND

The second-largest island in the Zanzibar Archipelago, edged with fine sand and bathed in a sea in infinite shades of turquoise, Pemba Island astounds with the whiteness of its shores and its abundant tropical forest. It is mountainous with hills full of fertile land and has the nickname "the Green Island". You'll fall in love with its quiet shores, full of authenticity. Banana trees, coconut trees, clove trees, nutmeg trees... its lush vegetation ensures the local production of spices that has made its reputation (essentially cloves but also nutmeg, vanilla, cinnamon, turmeric, pepper, etc.).

The Small Cruise Ship Collection

www.small-cruise-ships.com

01432 507 280 (within UK)

info@small-cruise-ships.com | small-cruise-ships.com



The Small Cruise Ship Collection

www.small-cruise-ships.com

small-cruise-ships.com

info@small-cruise-ships.com

Days 12 - 13 ZANZIBAR

Once a mythical post along the legendary Indian Ocean trade route, today a certain whiff of adventure still pervades in Zanzibar. Located off the coast of Tanzania, this place often referred to as "spice island" is brimming with natural treasures, such as Jozani Forest, the last remains of the huge primeval forest that once covered the island, home to a unique ecosystem. This port of call will also be the moment to discover "Stone Town", the historical centre of Zanzibar, a UNESCO World Heritage site. A veritable labyrinth of narrow streets lined with houses made from coral stone, it is home to sumptuous buildings in a multitude of architectural styles, the result of the blending of African, European and Indian cultures.

Please Note:

Itineraries are subject to change.



The Small Cruise Ship Collection

www.small-cruise-ships.com

small-cruise-ships.com

info@small-cruise-ships.com

YOUR SHIP: LE BOUGAINVILLE

YOUR SHIP: Le Bougainville

VESSEL TYPE:

LENGTH:

PASSENGER CAPACITY:

BUILT/REFURBISHED:

Featuring innovative and environmentally-friendly equipment, elegantly designed cabins, spacious suites with large windows, and lounge areas that open onto the outside, this new limited-capacity yacht boasting just 92 cabins and suites will offer you a truly unique cruising experience. As the first ship in a new series that remains true to the Ponant spirit, Le Bougainville will embody the unique atmosphere that is the cruise line's hallmark: a subtle blend of refinement, intimacy and comfort. Aboard this ship that flies the French flag, you will experience the incomparable pleasure of an intimate cruise, with the possibility of exploring an ever-increasing range of destinations in an ethnic-chic ambiance with luxury service. Experience a luxurious setting where the accent is on authenticity and passion for travel. **RESTAURANTS** As it is an essential part of French culture, gastronomy will naturally have pride of place aboard this new ship. Through its two restaurants, Le Bougainville will invite you on a journey to elegance and epicureanism. In a relaxed atmosphere, a first dining area located on Deck 3 and able to seat 70 will serve grilled meats daily, along with a variety of salads and desserts. To the back of Deck 4, you will find a 260 m² panoramic restaurant which can accommodate all of

our passengers in a single sitting. Designed differently to that on our other ships, this dining area, which opens onto the outside, will have a buffet of salads, desserts and cheeses at your disposal. Our discreet and attentive crew will provide table service for hot meals. **PUBLIC AREAS** Like Le Boreal and its sisterships, Le Bougainville has many common areas that are designed and equipped to meet all of your needs while preserving the intimacy of each passenger. A 140 m² reception area includes: A reception/concierge desk, An excursions desk, The ship's administrative services, The sales office, manned by our Guest Relations Officer, Our 50 m² boutique which sells clothing, jewellery, beauty products, postcards and various accessories, Toilets accessible to passengers with reduced mobility. A new hydraulic platform with adjustable height provides: Easier boarding than on any other cruise ship, Easier Zodiac embarkation and disembarkation for expeditions, Easier access to the sea for swimming and practising various water sports such as kayaking or paddle-boarding. A pool deck offering: A pool with a panoramic view, equipped with a counter-current swimming system, A pleasant solarium, An outdoor bar and lounge with armchairs and sofas. A 200 m² main lounge which can accommodate all of our passengers to share convivial moments and to host activities organised during the day or evening. Lastly, a theatre that seats 188, equipped with: The latest sound and lighting technology, A LED wall as the stage backdrop, for the projection of high-resolution images and videos. Please click the following links to read more about Ponant and the other Ponant

The Small Cruise Ship Collection
www.small-cruise-ships.com

01432 507 280 (within UK)

info@small-cruise-ships.com | small-cruise-ships.com



The Small Cruise Ship Collection
www.small-cruise-ships.com

small-cruise-ships.com info@small-cruise-ships.com



cruise ships.

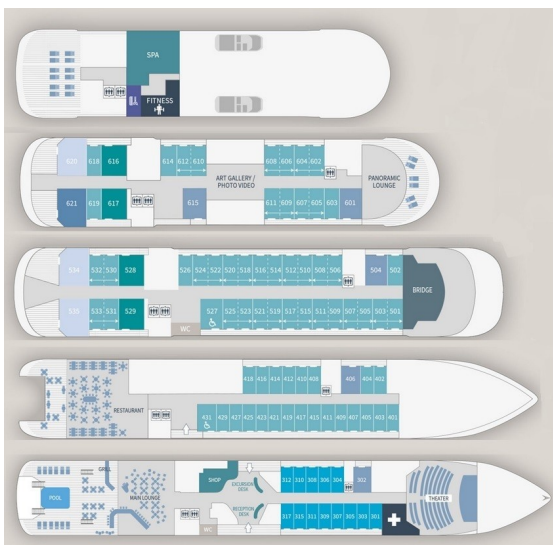
The Small Cruise Ship Collection

www.small-cruise-ships.com

small-cruise-ships.com

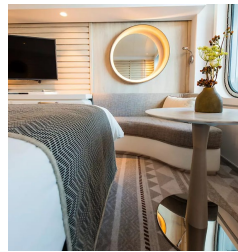
info@small-cruise-ships.com

INSIDE YOUR SHIP

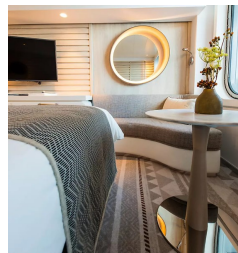


- Owner's Suite Deck 6
- Privilege Suites Deck 5-6
- Grand Deluxe Suites Deck 5-6
- Prestige Suites Deck 5-6
- Deluxe Suites Deck 5-6
- Prestige Cabins Deck 4-5-6
- Deluxe Cabins Deck 3

Deluxe Stateroom

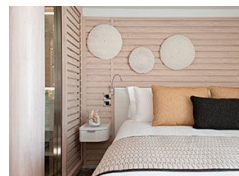
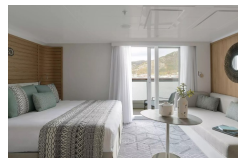


Deluxe Stateroom - waitlist



Deluxe Suite

Deluxe Suite Deck 3



Deluxe Suite Deck 4

Deluxe Suite Deck 5

Deluxe Suite Deck 6

Grand Deluxe Suite

Grand Deluxe Suite Deck 5

Grand Deluxe Suite Deck 6

Owner's Suite

Prestige Deck 4



The Small Cruise Ship Collection

www.small-cruise-ships.com

small-cruise-ships.com

info@small-cruise-ships.com

Prestige Deck 5

Prestige Deck 5 Suite

Prestige Deck 6

Prestige Deck 6 Suite

Prestige Stateroom Deck 4

Prestige Stateroom Deck 5

Prestige Stateroom Deck 6

Prestige Suite Deck 5

Prestige Suite Deck 6

Privilege Suite

Privilege Suite Deck 5

Privilege Suite Deck 6



01432 507 280 (within UK)

info@small-cruise-ships.com | small-cruise-ships.com

The Small Cruise Ship Collection

www.small-cruise-ships.com

small-cruise-ships.com

info@small-cruise-ships.com

PRICING

19-Jan-2025 to 31-Jan-2025

Prestige Suite Deck 5	£15699 GBP pp
Prestige Stateroom Deck 6	£8279 GBP pp
Prestige Stateroom Deck 4	£7459 GBP pp
Deluxe Stateroom	£6709 GBP pp
Prestige Suite Deck 6	£16519 GBP pp
Deluxe Suite	£11579 GBP pp
Owner's Suite	£20039 GBP pp
Grand Deluxe Suite	£19069 GBP pp
Prestige Stateroom Deck 5	£7829 GBP pp
Privilege Suite	£17345 GBP pp

Prestige Stateroom Deck 5	£7829 GBP pp
Prestige Suite Deck 6	£16519 GBP pp
Grand Deluxe Suite	£19069 GBP pp
Deluxe Suite	£11579 GBP pp
Privilege Suite	£17345 GBP pp
Deluxe Stateroom	£6709 GBP pp
Prestige Stateroom Deck 6	£8279 GBP pp
Prestige Suite Deck 5	£15699 GBP pp
Prestige Stateroom Deck 4	£7459 GBP pp
Owner's Suite	£20039 GBP pp

31-Jan-2025 to 12-Feb-2025

Grand Deluxe Suite	£14940 GBP pp
Prestige Suite Deck 6	£13000 GBP pp
Prestige Stateroom Deck 6	£6220 GBP pp
Prestige Suite Deck 5	£12200 GBP pp
Deluxe Stateroom - waitlist	£5100 GBP pp
Privilege Suite	£13550 GBP pp
Prestige Stateroom Deck 5	£5860 GBP pp
Deluxe Suite	£8880 GBP pp
Owner's Suite	£21000 GBP pp
Prestige Stateroom Deck 4	£5550 GBP pp

31-Jan-2025 to 12-Feb-2025

The Small Cruise Ship Collection

www.small-cruise-ships.com

small-cruise-ships.com

info@small-cruise-ships.com

PRICING

12-Feb-2025 to 24-Feb-2025

Prestige Deck 6	£8279 GBP pp
Grand Deluxe Suite Deck 6	£19069 GBP pp
Owner's Suite	£20039 GBP pp
Prestige Deck 6 Suite	£16519 GBP pp
Prestige Deck 5 Suite	£15699 GBP pp
Prestige Deck 4	£7459 GBP pp
Deluxe Stateroom	£6709 GBP pp
Privilege Suite Deck 6	£17345 GBP pp
Privilege Suite Deck 5	£17345 GBP pp
Grand Deluxe Suite Deck 5	£19069 GBP pp
Deluxe Suite Deck 6	£11579 GBP pp
Deluxe Suite Deck 5	£11579 GBP pp
Deluxe Suite Deck 4	£11579 GBP pp
Deluxe Suite Deck 3	£11579 GBP pp
Prestige Deck 5	£7829 GBP pp

12-Feb-2025 to 24-Feb-2025

Deluxe Stateroom	£6252 GBP pp
Owner's Suite	£19584 GBP pp
Prestige Stateroom Deck 4	£7002 GBP pp
Prestige Stateroom Deck 5	£7374 GBP pp
Prestige Stateroom Deck 6	£7823 GBP pp
Prestige Suite Deck 6	£16065 GBP pp
Prestige Suite Deck 5	£15243 GBP pp
Deluxe Suite	£11123 GBP pp
Privilege Suite	£16891 GBP pp
Grand Deluxe Suite	£18615 GBP pp

24-Feb-2025 to 08-Mar-2025

Prestige Suite Deck 6	£16519 GBP pp
Deluxe Suite	£11579 GBP pp
Deluxe Stateroom	£6709 GBP pp
Grand Deluxe Suite	£19069 GBP pp
Prestige Suite Deck 5	£15699 GBP pp
Prestige Stateroom Deck 4	£7459 GBP pp
Prestige Stateroom Deck 6	£8279 GBP pp
Prestige Stateroom Deck 5	£7829 GBP pp
Owner's Suite	£20039 GBP pp
Privilege Suite	£17345 GBP pp

The Small Cruise Ship Collection

www.small-cruise-ships.com

small-cruise-ships.com

info@small-cruise-ships.com

PRICING

02-Feb-2026 to 14-Feb-2026

Privilege Suite	£18039 GBP pp
Prestige Stateroom Deck 6	£8615 GBP pp
Deluxe Stateroom	£6975 GBP pp
Prestige Stateroom Deck 4	£7759 GBP pp
Grand Deluxe Suite	£19835 GBP pp
Deluxe Suite	£12045 GBP pp
Prestige Stateroom Deck 5	£8145 GBP pp
Prestige Suite Deck 6	£17185 GBP pp
Prestige Suite Deck 5	£16325 GBP pp
Owner's Suite	£20845 GBP pp

26-Feb-2026 to 10-Mar-2026

Prestige Stateroom Deck 6	£8160 GBP pp
Grand Deluxe Suite	£19380 GBP pp
Prestige Stateroom Deck 5	£7685 GBP pp
Prestige Suite Deck 6	£16728 GBP pp
Prestige Suite Deck 5	£15871 GBP pp
Deluxe Stateroom	£6517 GBP pp
Owner's Suite	£20389 GBP pp
Privilege Suite	£17584 GBP pp
Prestige Stateroom Deck 4	£7303 GBP pp
Deluxe Suite	£11587 GBP pp

10-Mar-2026 to 22-Mar-2026

Privilege Suite	£17584 GBP pp
Prestige Stateroom Deck 6	£8160 GBP pp
Owner's Suite	£20389 GBP pp
Prestige Stateroom Deck 4	£7303 GBP pp
Prestige Suite Deck 6	£16728 GBP pp
Prestige Suite Deck 5	£15871 GBP pp
Prestige Stateroom Deck 5	£7685 GBP pp
Deluxe Stateroom	£6517 GBP pp
Deluxe Suite	£11587 GBP pp
Grand Deluxe Suite	£19380 GBP pp

ADDITIONAL CHARGES:

Port Taxes & Fees 890 AUD pp